



# CENTENNIAL PLAZA S.C.

2502 - 2522 Vine Street, Hayes, KS

RETAIL  
SPACES  
FOR LEASE




**LEASE RATE: \$5.00/SF NNN | 1,250 - 3,063 SF AVAILABLE**

### DEMOGRAPHICS

	1 mile	3 miles	5 miles
Estimated Population	10,806	22,090	22,700
Avg. Household Income	\$69,515	\$67,751	\$67,971

- Join national tenants, Petsense, Sherwin Williams, and Jalisco Mexican Restaurant
- Two miles of I-70 in the heart of Hayes, Kansas
- Located close to Fort Hayes State University and Downtown Hayes
- Multiple uses and opportunities for potential tenants

 **CLICK HERE TO VIEW MORE LISTING INFORMATION**

**For More Information Contact:**

*Exclusive Agent*

**PIERS PENER | 816.412.7356 | [ppener@blockandco.com](mailto:ppener@blockandco.com)**



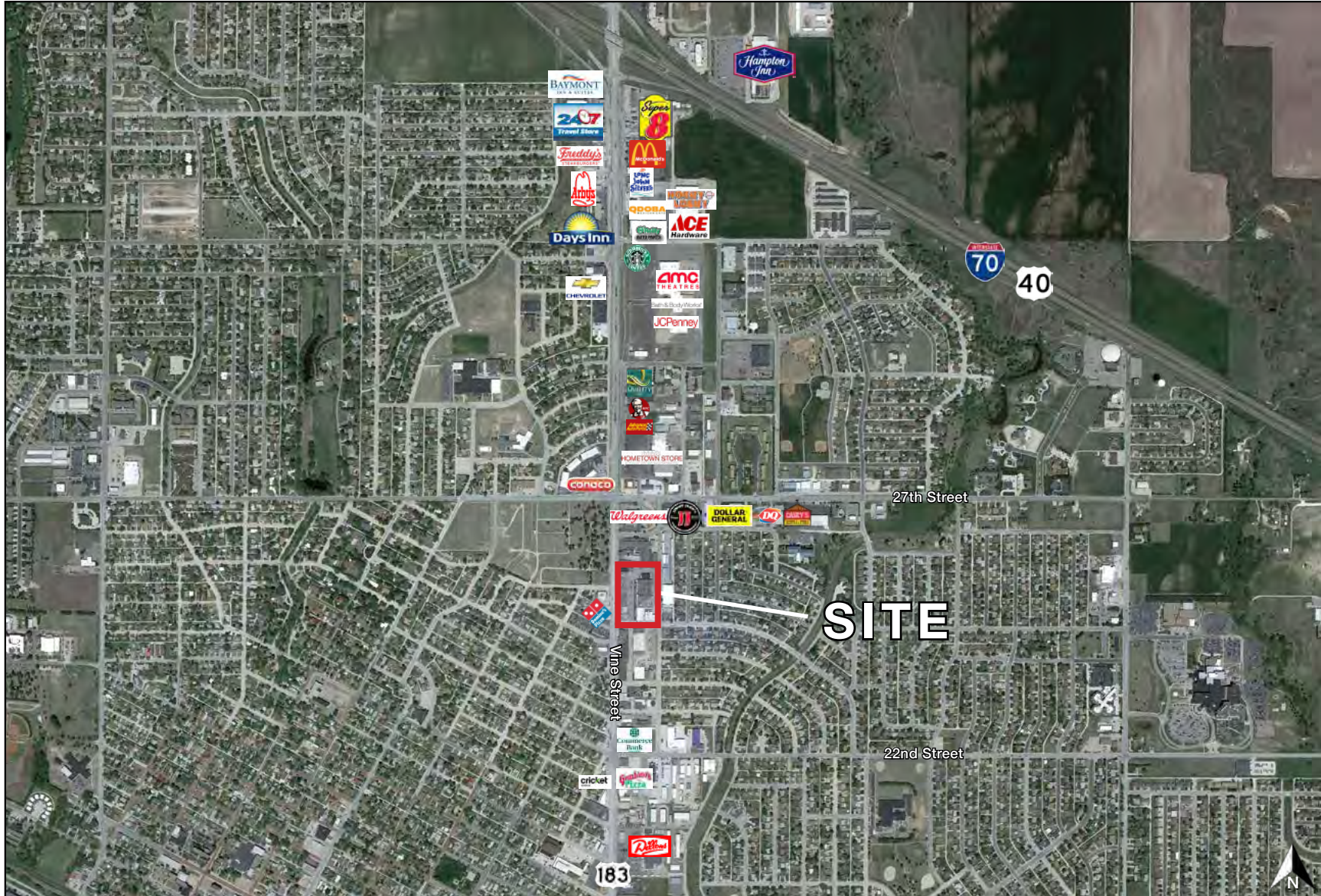


# CENTENNIAL PLAZA S.C.

2502 - 2522 Vine Street, Hayes, Kansas

RETAIL  
SPACES  
FOR LEASE

AERIAL

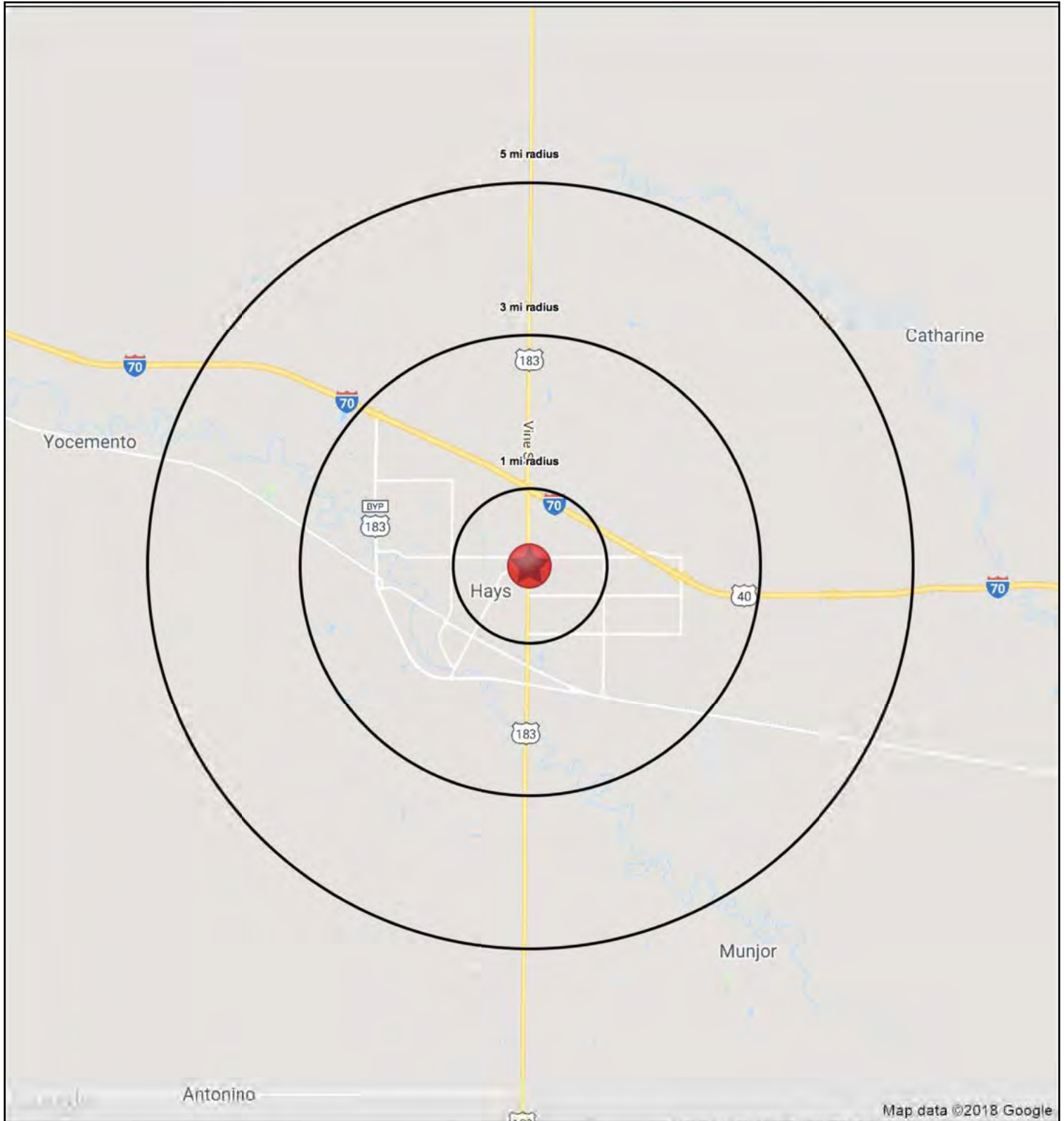




# CENTENNIAL PLAZA S.C.

2502 - 2522 Vine Street, Hayes, KS

RETAIL  
SPACES  
FOR LEASE





# CENTENNIAL PLAZA S.C.

2502 - 2522 Vine Street, Hayes, KS

**RETAIL  
SPACES  
FOR LEASE**

2502-2522 Vine Street		1 mi radius	3 mi radius	5 mi radius
Hays, KS 67601				
<b>POPULATION</b>	2018 Estimated Population	10,806	22,090	22,700
	2023 Projected Population	10,477	21,525	22,123
	2010 Census Population	10,796	21,665	22,340
	2000 Census Population	10,974	21,128	21,756
	Projected Annual Growth 2018 to 2023	-0.6%	-0.5%	-0.5%
	Historical Annual Growth 2000 to 2018	-0.1%	0.3%	0.2%
	2018 Median Age	34.4	33.1	33.1
<b>HOUSEHOLDS</b>	2018 Estimated Households	4,973	9,527	9,771
	2023 Projected Households	5,062	9,736	9,987
	2010 Census Households	4,835	9,138	9,404
	2000 Census Households	4,660	8,619	8,868
	Projected Annual Growth 2018 to 2023	0.4%	0.4%	0.4%
	Historical Annual Growth 2000 to 2018	0.4%	0.6%	0.6%
<b>RACE AND ETHNICITY</b>	2018 Estimated White	93.1%	90.5%	90.6%
	2018 Estimated Black or African American	1.6%	1.6%	1.6%
	2018 Estimated Asian or Pacific Islander	1.1%	2.4%	2.4%
	2018 Estimated American Indian or Native Alaskan	0.2%	0.3%	0.3%
	2018 Estimated Other Races	4.0%	5.1%	5.2%
	2018 Estimated Hispanic	4.7%	6.6%	6.7%
<b>INCOME</b>	2018 Estimated Average Household Income	\$69,515	\$67,751	\$67,971
	2018 Estimated Median Household Income	\$49,781	\$52,419	\$52,737
	2018 Estimated Per Capita Income	\$32,069	\$29,458	\$29,491
<b>EDUCATION (AGE 25+)</b>	2018 Estimated Elementary (Grade Level 0 to 8)	2.6%	2.5%	2.5%
	2018 Estimated Some High School (Grade Level 9 to 11)	4.0%	3.9%	3.8%
	2018 Estimated High School Graduate	25.1%	23.9%	24.1%
	2018 Estimated Some College	25.3%	25.9%	25.9%
	2018 Estimated Associates Degree Only	6.5%	6.8%	6.8%
	2018 Estimated Bachelors Degree Only	25.3%	24.9%	24.8%
	2018 Estimated Graduate Degree	11.3%	12.2%	12.1%
<b>BUSINESS</b>	2018 Estimated Total Businesses	704	1,541	1,576
	2018 Estimated Total Employees	6,038	16,383	16,707
	2018 Estimated Employee Population per Business	8.6	10.6	10.6
	2018 Estimated Residential Population per Business	15.3	14.3	14.4

