

3280 Democrat Rd

Suite 3280, Memphis, TN 38118

Available for Lease
12,082± SF | Prime Industrial



Yellow Outline Indicates Democrat Square Industrial Park

SITE
3280 Democrat Rd.



Suite Available



Suite 3280
6 Dock High Doors
1 Grade Level Door



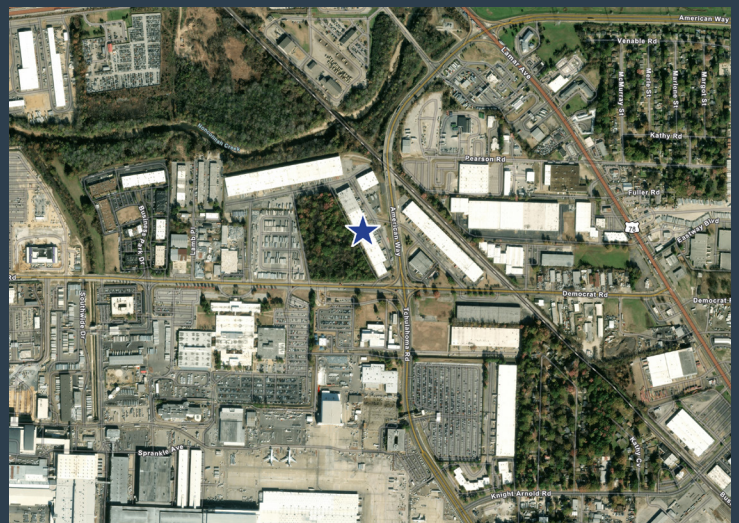
24'
Clear Height



Easy Access to I-40,
I-240, I-55 & I-22
(Hwy. 78)



Next to Memphis
Int'l Airport



Please contact

ELLIOT EMBRY, SIOR
Direct: 901 312 4902
Mobile: 901 634 2583
elliott.embry@colliers.com

COLLIERS
6363 Poplar Ave., Suite 220
901.375.4800
colliers.com/memphis

[View Online](#)



Building Features

48' x 40' column spacing

On-site nighttime security

Next to FedEx World Hub and Memphis Int'l Airport

Easy access to I-40, I-240, I-55 & I-22 (Hwy. 78)

Southeast Memphis Submarket

Suite 3280 Features

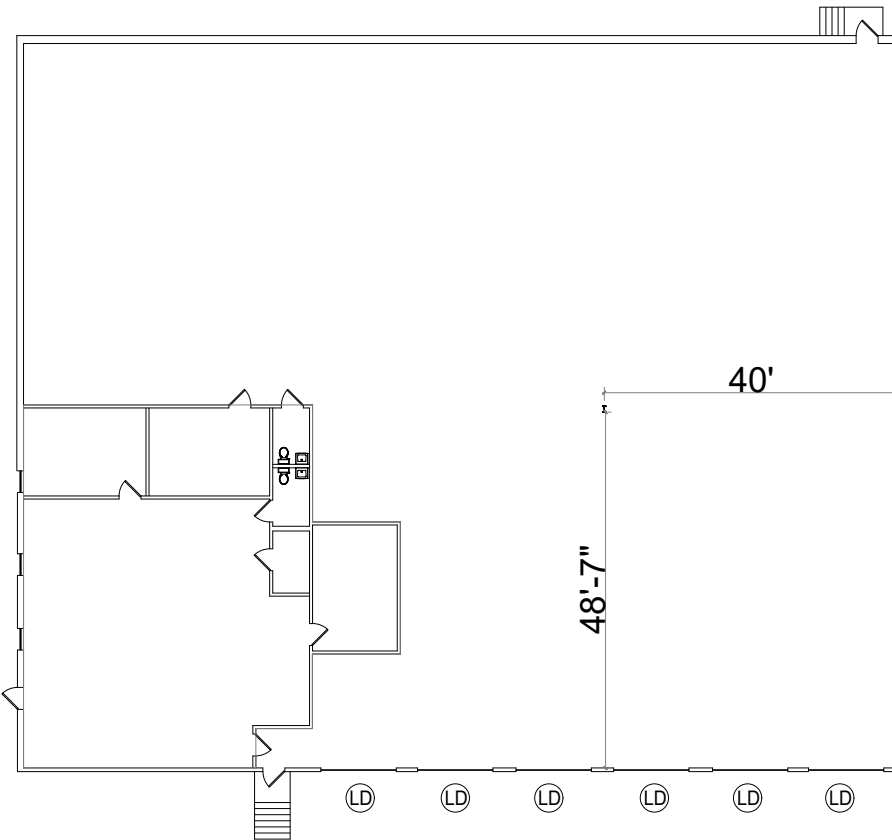
Suite 3280 - 12,082± SF

Warehouse - 9,952± SF

Office - 2,130± SF

6 dock doors

1 grade level door



Please contact

ELLIOT EMBRY, SIOR
Direct: 901 312 4902
Mobile: 901 634 2583
elliot.embry@colliers.com



6363 Poplar Ave., Suite 220
901.375.4800
colliers.com/memphis

