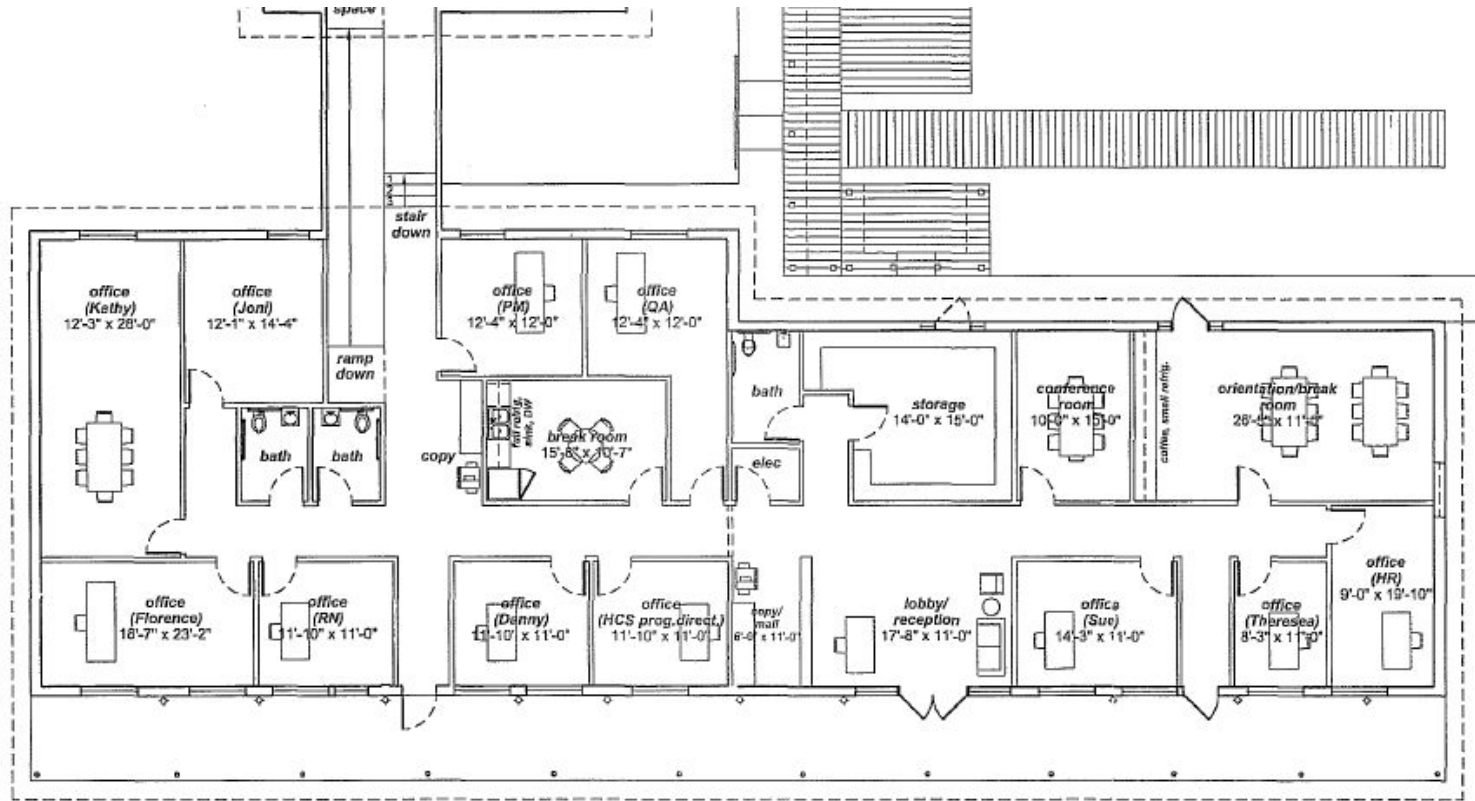


1110 W William Cannon Drive

Building 1



Floorplan



Financials

- Lease Term: 3 to 7 years
- Base Rent: \$15 per square foot
- NNNs: \$8 per square foot
- Available Now
- Negotiable TI based on lease term and tenant financials
 - Possible to divide in to 2 spaces, or consolidate with Building 2 for ~8,400 sqft

Cannon Park



- Strong medical corridor along William Cannon
- Convenient to MoPac or 35
- Ample Parking and easy road access
- Marquis sign
- 25,369 vehicles per day traffic
- Other tenants include medical practices, pediatrician, dentist, acupuncture, massage therapist





Option 1 - Open Space



Building 1: Open Office Concept.
Co-Working

View 1



Building 1: Open office concept. Private and collaborative spaces

View 2



Building 1: Open Office Concept. Business meetings

View 3



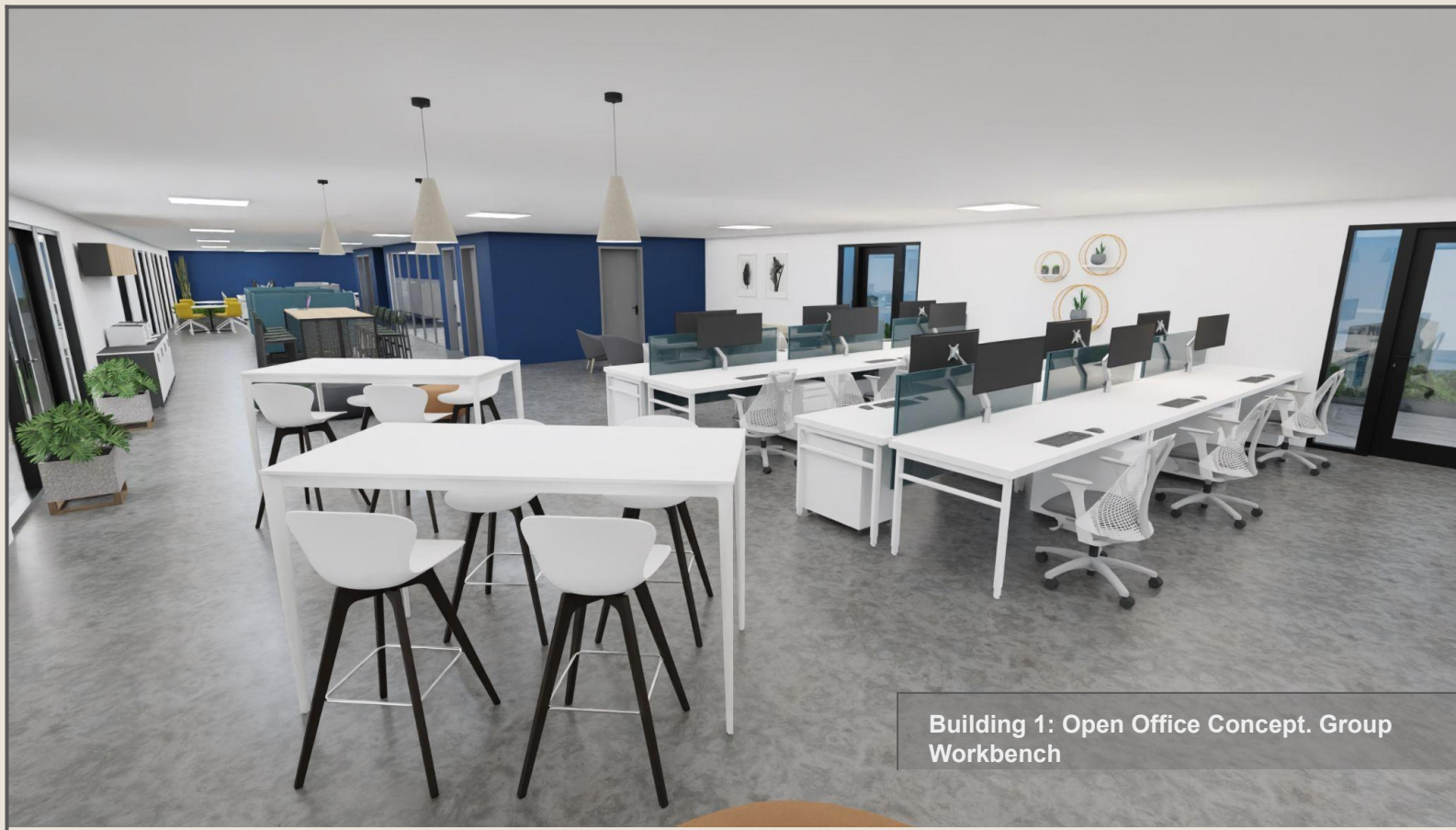
Building 1: Open Office Concept. Workstations

View 4



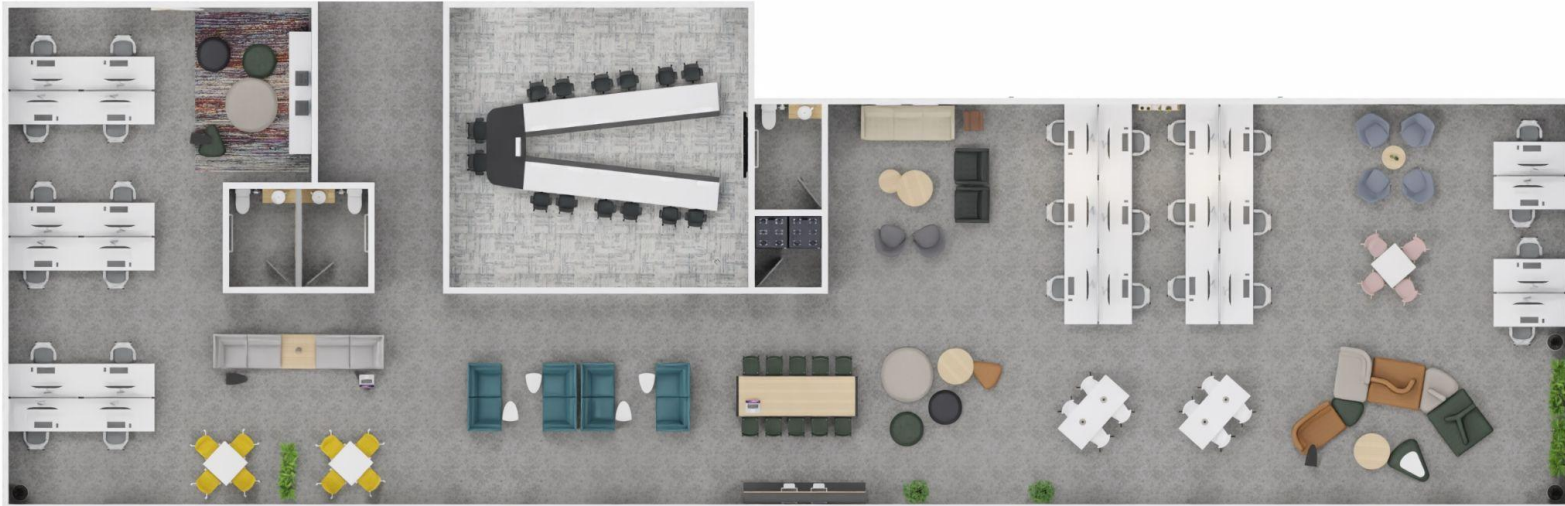
Building 1: Open Office Concept. Private Meetings

View 5

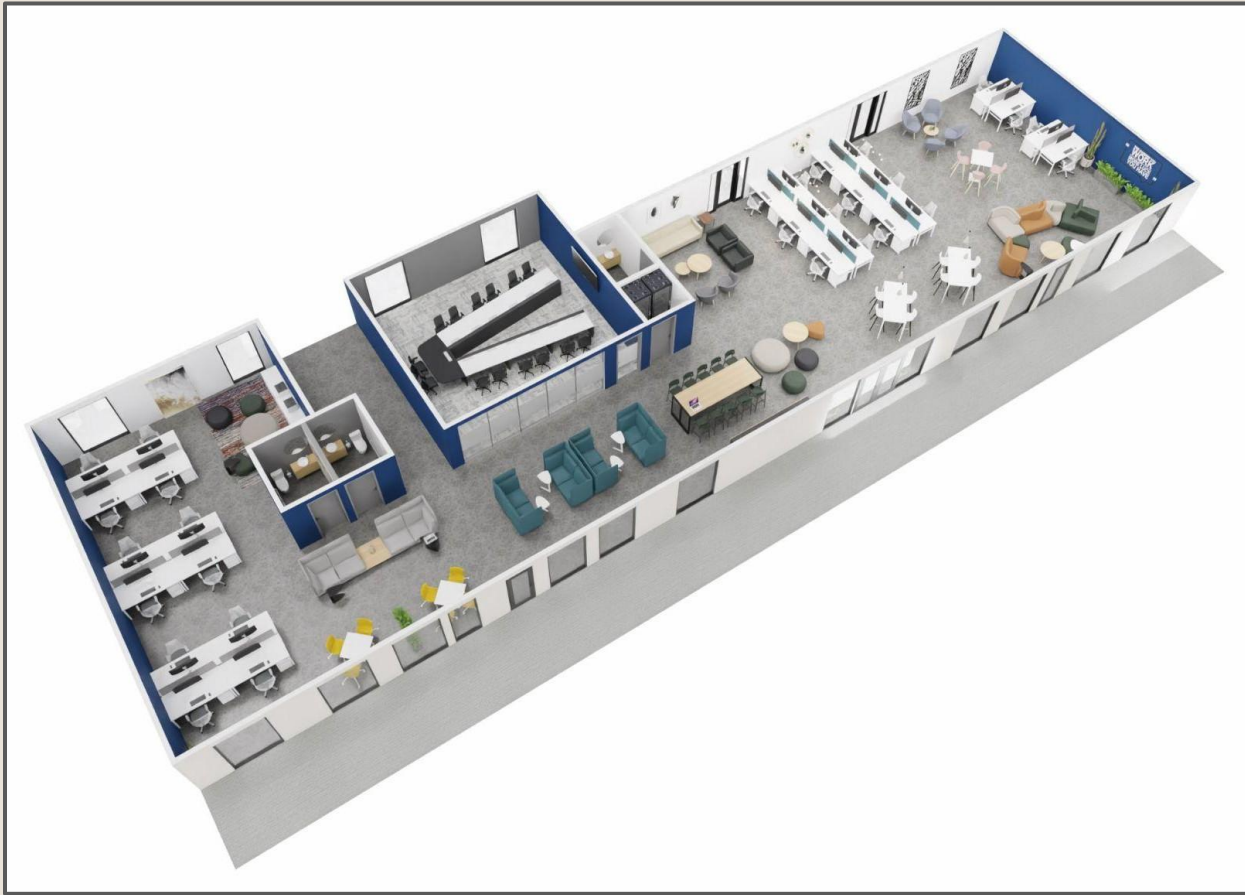


Building 1: Open Office Concept. Group Workbench

View 6



View 7 - Top View



View 8 - Aerial Perspective

Option 2 - Hybrid Space



Building 1: Hybrid Concept. Private and group workspaces

View 1



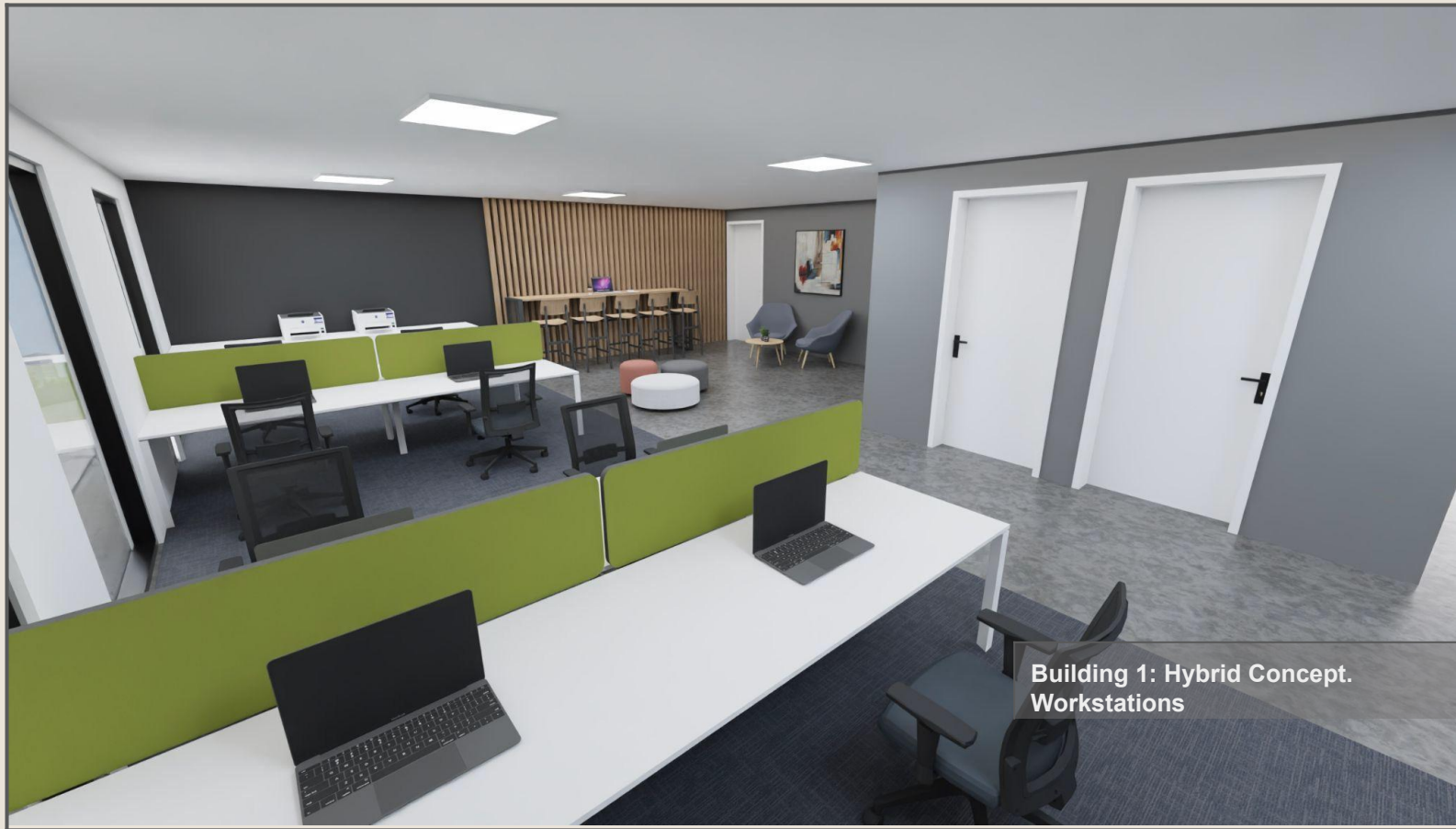
Building 1: Hybrid Concept. Private and group meeting rooms

View 2



Building 1: Hybrid Concept. Collaborative work areas

View 3



Building 1: Hybrid Concept.
Workstations

View 4



Building 1: Hybrid Concept. Private Offices

View 5



Building 1: Hybrid Concept. Meeting room

View 6

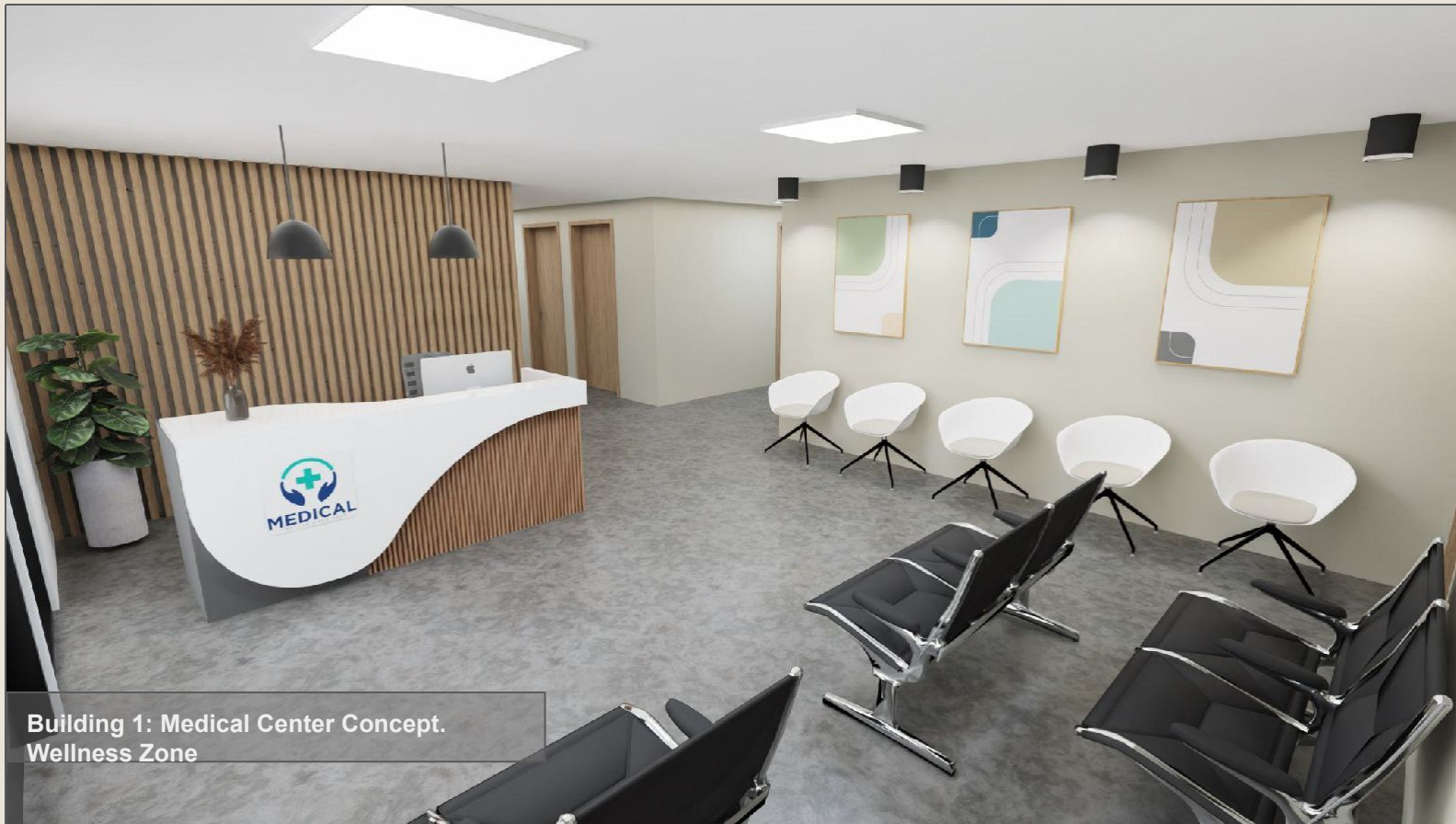


View 7 - Top View



View 8 - Aerial Perspective

Option 3 - Medical Center



Building 1: Medical Center Concept.
Wellness Zone

View 1



Building 1: Medical Center Concept. Meeting Rooms

View 2



Building 1: Medical Center Concept. Medical Equipment

View 3



Building 1: Medical Center Concept.
Physiotherapy Area

View 4



Building 1: Medical Center Concept.
Restrooms

View 5



Building 1: Medical Center Concept.
Coffee place

View 6



View 7 - Top View



View 8 - Aerial Perspective