

# Orchestra Place (First Floor Retail)

1,674 - 5,204 SF Available

3613 Woodward Ave  
Detroit, MI 48201

Excellent Midtown Location near DMC, Wayne State and Little Caesars Arena



# Property Highlights

- + First Floor 1,674 SF Retail Space Available
- + Opportunity to combine neighboring corner space of 3,529 SF for a combined total of 5,203 SF
- + Prime Midtown location with close proximity to DMC, Wayne State University, Little Caesars Arena, AC Hotel, The Bonstelle Theater and more
- + Located at the signalized corner of Woodward Ave and Mack Ave, with traffic counts exceeding 40,000 vehicles per day
- + Covered Public Parking Garage located directly in rear, making it convenient for customers and employees to park
- + Nearby retailers include Whole Foods, FedEx, Pure Barre, Qargo Coffee, Grey Ghost, The Eagle, and many more
- + **Lease Rate: \$35.00/SF NNN**
- + **Master Lease Expires 6/30/29, with opportunity to sign a new lease if interested in longer term tenancy**

# Macro Aerial

## POINTS OF INTEREST

- 1 The Bonstelle Theater
- 2 University of Michigan Detroit Center
- 3 Majestic Theater
- 4 Huntington Bank HQ
- 5 Detroit Institute of Arts
- 6 Charles H. Wright Museum of African American History
- 7 Fox Theater
- 8 Little Caesar's HQ
- 9 Detroit Historical Museum
- 10 College For Creative Studies
- 11 Michigan Science Center
- 12 Fisher Theater
- 13 MGM Grand Detroit
- 14 GMRENCEN

## F&B

- A Bar Figalle
- B Bakersfield
- C Grey Ghost
- D Selden Standard
- E Jolly Pumpkin
- F Second Best
- G Detroit Shipping Company
- H Elephant & Co.
- I Union Assembly & Mom's Spaghetti

## HOTELS

- 1 Shinola Hotel
- 2 Aloft Detroit at The David Whitney
- 3 Element Detroit at the Metropolitan Hotel
- 4 The Siren Hotel
- 5 The Westin Book Cadillac
- 6 Detroit Foundation Hotel
- 7 The Godfrey
- 8 AC Hotel
- 9 Edition Hotel (Under Construction)

## RETAIL

- A Whole Foods Market
- B Shinola Detroit Store
- C Carhartt
- D H&M
- E Lululemon
- F Nike
- G Gucci
- H Plum Market
- I Meijer Rivertown Market
- J Apple
- K Alo
- L Tecovas
- M Sweetgreen
- N Cava
- O Planet Fitness

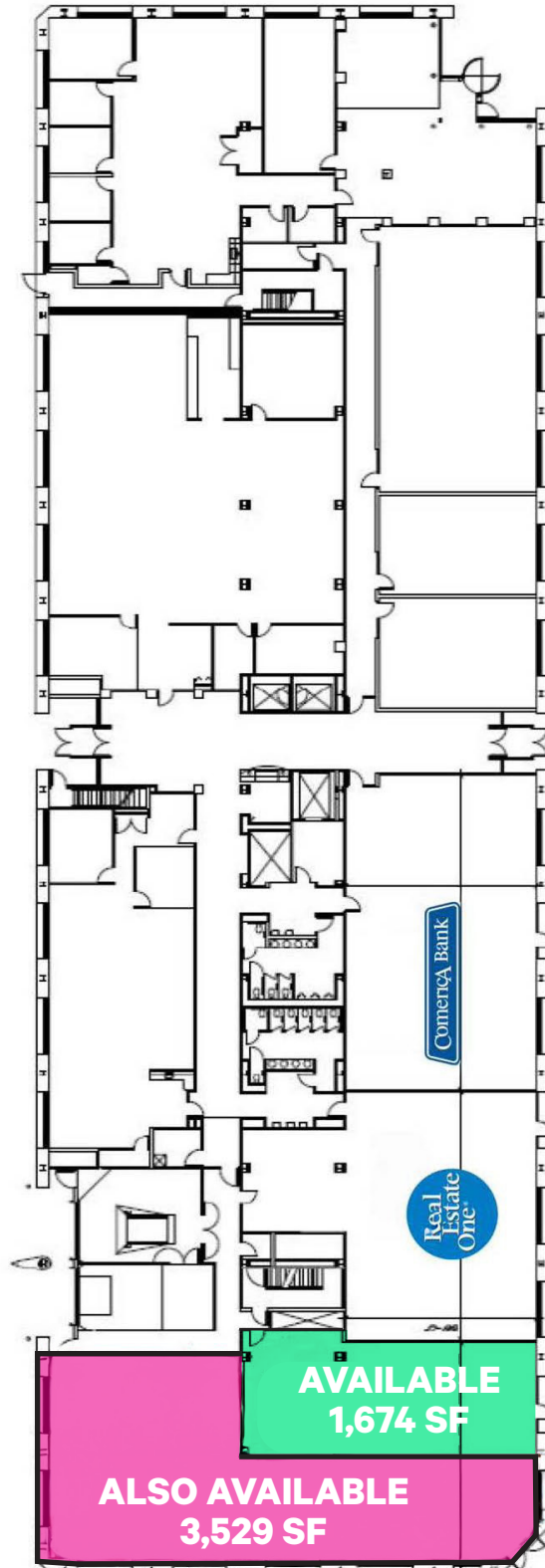


# Micro Aerial



2025 Demographics	1 Mile	3 Miles	5 Miles
Population	22,559	92,495	242,369
Number of Households	11,619	47,719	102,927
Average Household Size	1.66	1.80	2.28
Average Household Income	\$59,371	\$64,921	\$58,332
Daytime Population	56,319	215,935	359,498

# Site Plan



# Property Photos



## Contact Us

**Matt Croswell**

First Vice President

+1 248 351 2084

[matt.croswell@cbre.com](mailto:matt.croswell@cbre.com)

**Scott Young**

Senior Vice President

+1 248 342 9000

[scott.young@cbre.com](mailto:scott.young@cbre.com)

**Jake Vorkapich**

Transaction Manager

+1 248 351 2071

[jake.vorkapich@cbre.com](mailto:jake.vorkapich@cbre.com)

© 2025 CBRE, Inc. All rights reserved. This information has been obtained from sources believed reliable but has not been verified for accuracy or completeness. CBRE, Inc. makes no guarantee, representation or warranty and accepts no responsibility or liability as to the accuracy, completeness, or reliability of the information contained herein. You should conduct a careful, independent investigation of the property and verify all information. Any reliance on this information is solely at your own risk. CBRE and the CBRE logo are service marks of CBRE, Inc. All other marks displayed on this document are the property of their respective owners, and the use of such marks does not imply any affiliation with or endorsement of CBRE. Photos herein are the property of their respective owners. Use of these images without the express written consent of the owner is prohibited.