

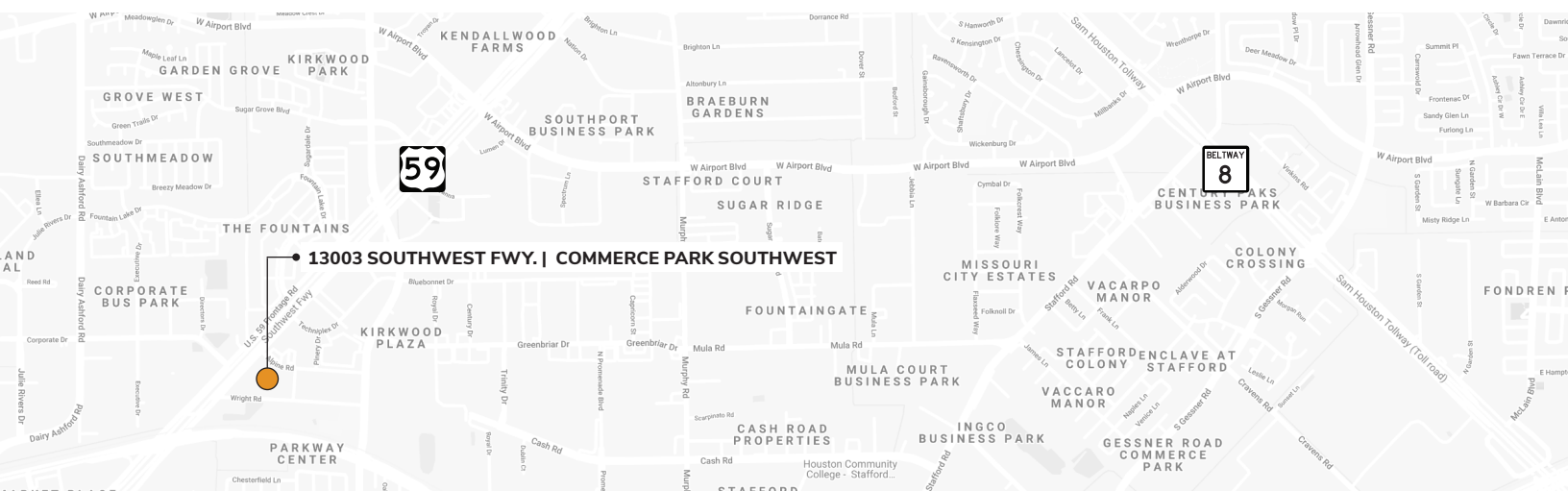
FOR LEASE

COMMERCE PARK SOUTHWEST
13003 SOUTHWEST FWY., SUITE 180



BUILDING SPECIFICATIONS

Address:	13003 Southwest Fwy., Suite 180 Stafford, TX 77477
Suite Size:	6,322 SF
Office:	6,047 SF
Warehouse:	±1,000 SF
Truck Loading:	2-grade level doors
Clear Height:	12'
Overview:	Great access to Highway 59, Highway 90 and Beltway 8.



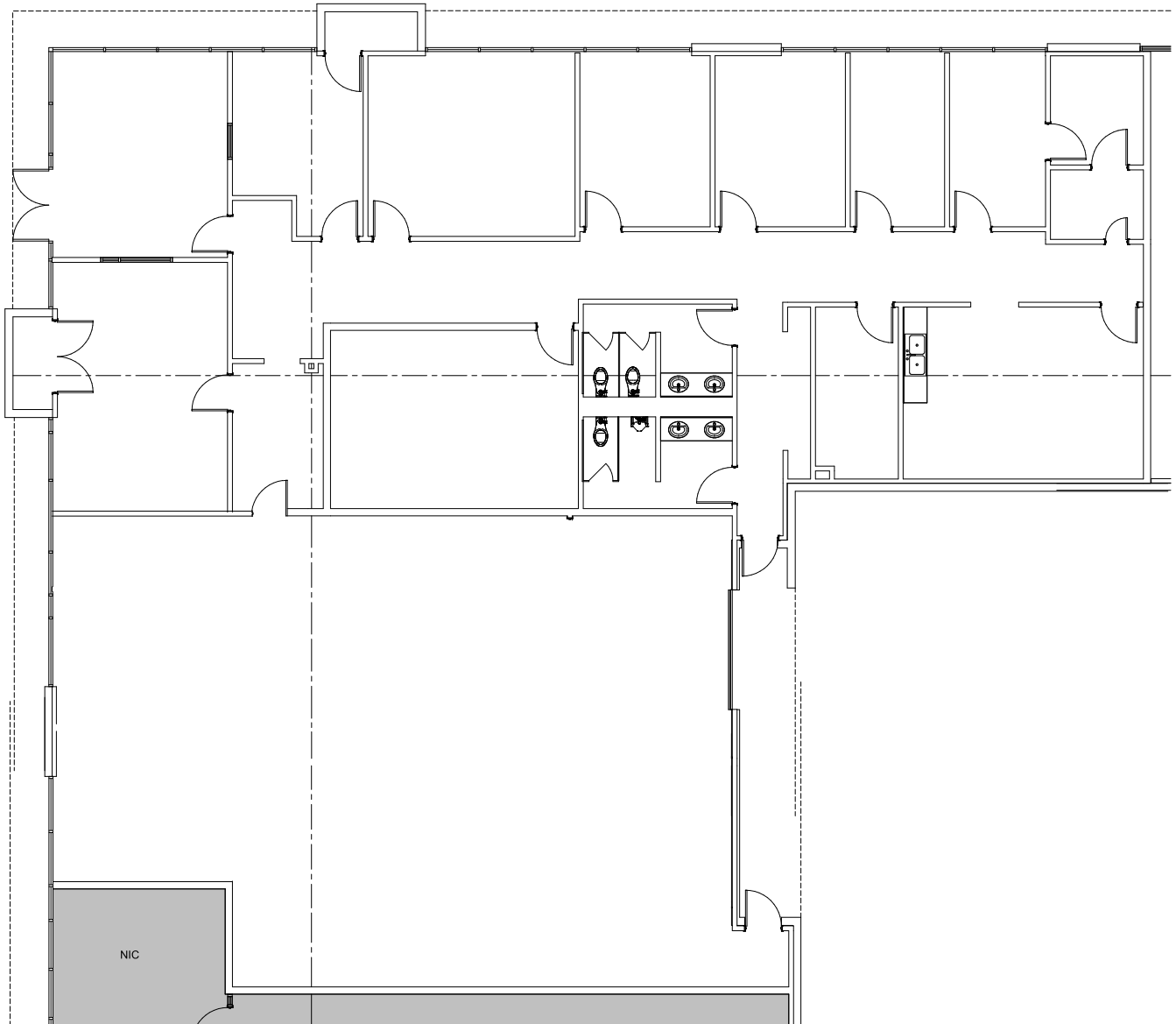
Owned By
mapletree

Leasing By
STREAM

Meg Zschappel | 713.300.0284 | meg.zschappel@streamrealty.com
Jack Rathe | 713.300.0298 | jack.rathe@streamrealty.com

FOR LEASE

COMMERCE PARK SOUTHWEST
13003 SOUTHWEST FWY., SUITE 180



Owned By
mapletree

Leasing By
STREAM

Meg Zschappel | 713.300.0284 | meg.zschappel@streamrealty.com
Jack Rathe | 713.300.0298 | jack.rathe@streamrealty.com