

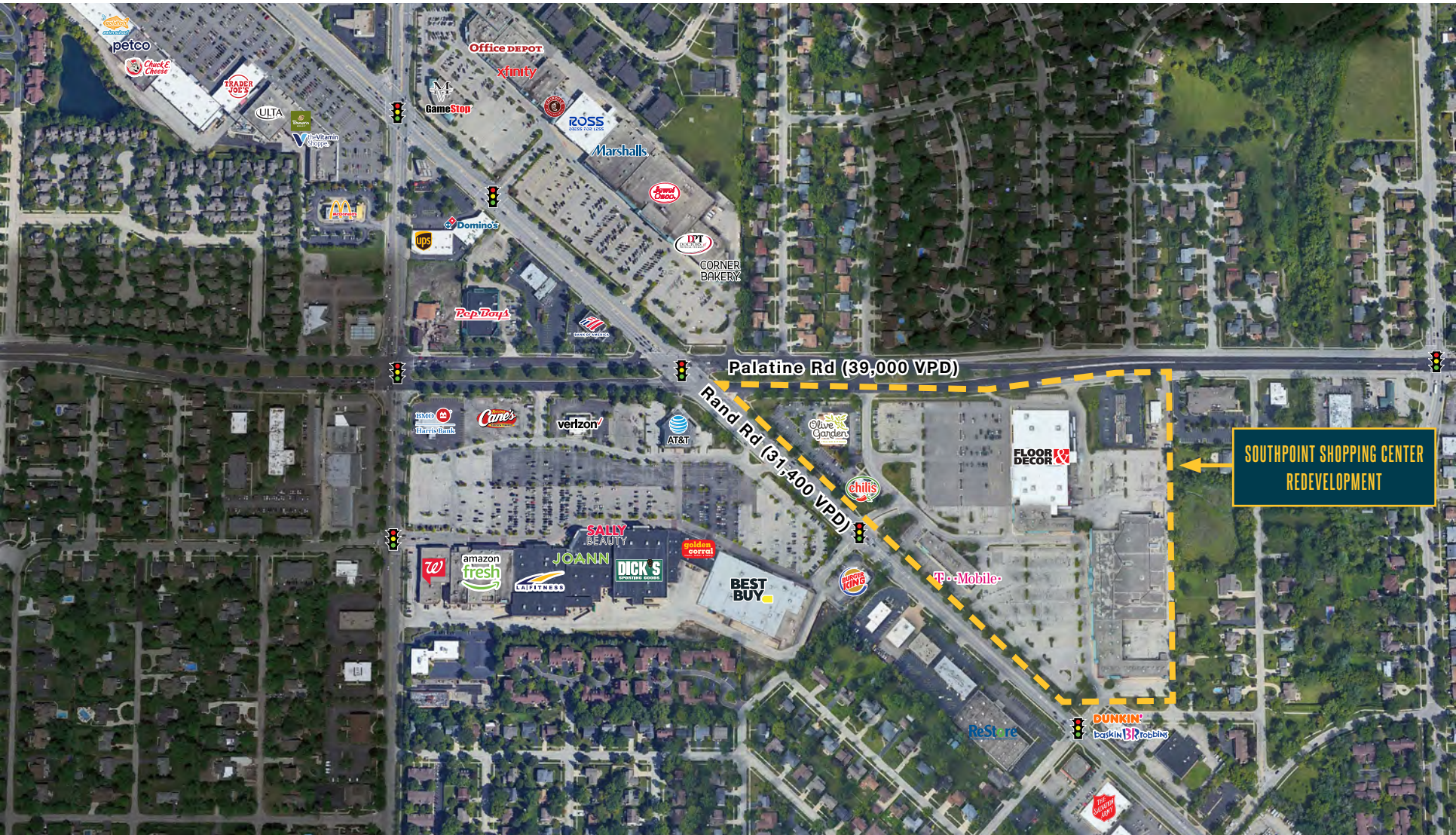
JOIN CHIPOTLE SOUTHPOINT SHOPPING CENTER

SEC Rand Rd & Palatine Rd / Arlington Heights, IL



MID-AMERICA®

AVAILABLE NOW



RETAIL OPPORTUNITY

SOUTHPOINT SHOPPING CENTER REDEVELOPMENT



Address

SEC Rand Road & Palatine Road
Arlington Heights, IL

Availability

Outlot: ±1,500 - 3,097 SF
North Shops: ±1,135 - 11,500 SF
South Shops: ±2,000 - 31,000 SF
or 40k SF BTS

Co-Tenants/ Area Retailers



Features

- Redevelopment opportunity in the heart of the Arlington Heights Rand Rd corridor
- New multi-tenant outlot buildings on Palatine Rd Redevelopment of South Shop spaces up to 40k SF or BTS
- Proximity to major intersection with combined traffic counts exceeding 190,000 vehicles per day
- Comprehensive updating planned for new parking lot, lighting, landscaping, facades and awnings

Demographics

	3 Miles	5 Miles	7 Miles
POPULATION	134,046	326,300	482,603
HOUSEHOLDS	53,121	127,920	189,671
AVG HOUSEHOLD INCOME	\$106,205	\$104,078	\$112,608
DAYTIME POPULATION	121,335	322,311	599,167

SOUTHPOINT SHOPPING CENTER REDEVELOPMENT



OUTLOT SPACE		
Outlot	Tenant	SF
101	Chipotle (In Lease)	2,500
102	Available	3,097

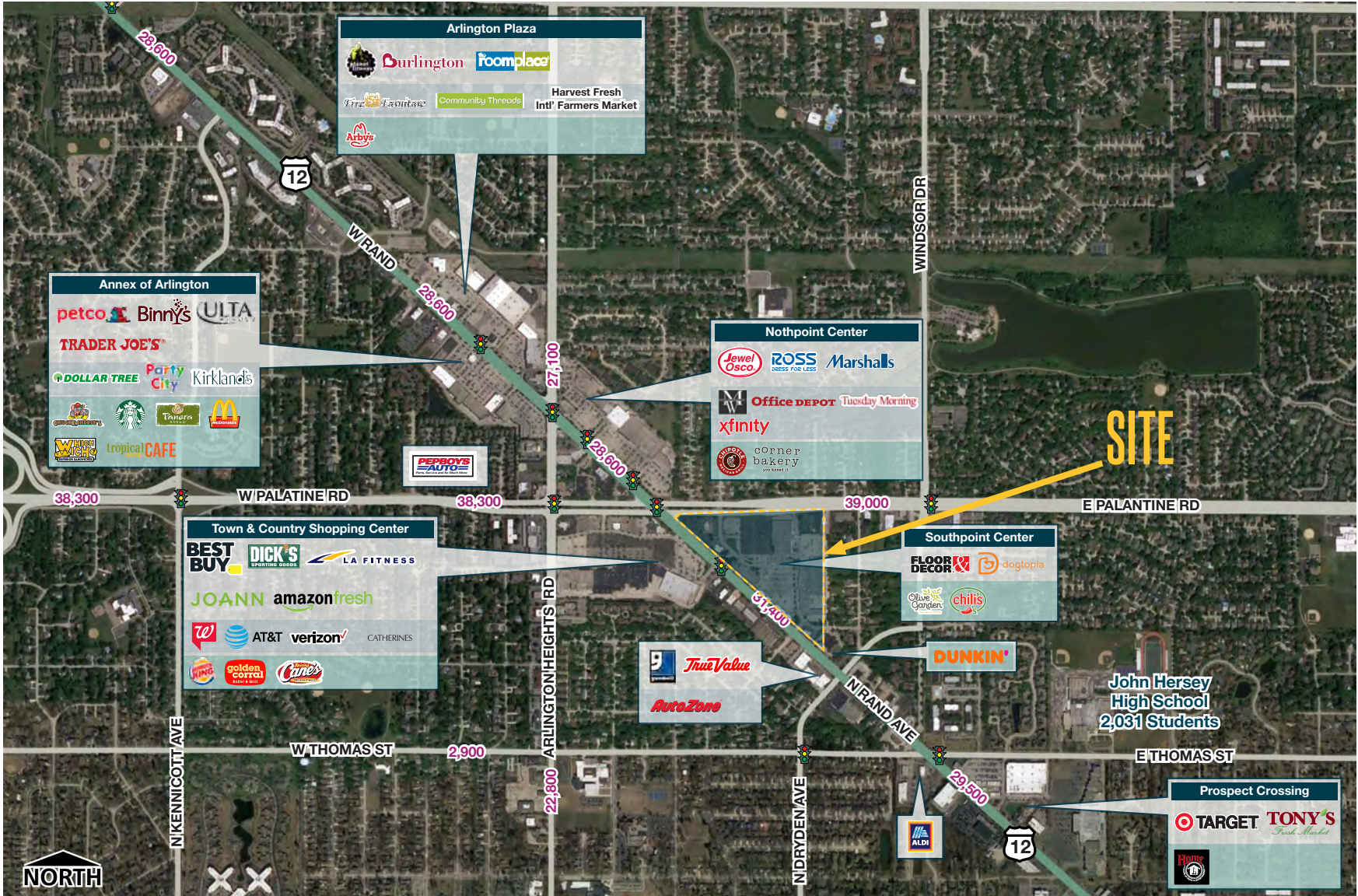
NORTH SHOPS		
Suite	Tenant	SF
1	Available	1,800
2	Kitchen & Bath Master	1,133
3	At Lease	8,908
4-7	Dogtopia	5,600
**Combined Spaces 1-3: 11,850 SF		

SOUTH SHOPS		
Suite	Tenant	SF
14 a	Available	3,800
14 b	Available	2,400
15	Available	3,400
16	Available	11,479
17	Available	1,135
18	Available	2,270

Suite	Tenant	SF
19	Available	1,495
20	Available	2,265
22	Available	2,623
**Combined Spaces 14-22: 30,879 SF OR Redevelopment Potential: 40K SF or BTS		



SOUTHPOINT SHOPPING CENTER REDEVELOPMENT



SOUTHPOINT SHOPPING CENTER REDEVELOPMENT



SOUTHPOINT SHOPPING CENTER REDEVELOPMENT



April
Smith

Mid-America Asset Management
T: 630.954.7451
F: 630.954.7304
ASmith@MidAmericaGrp.com

Kevin
Reinke

Mid-America Real Estate Corp
T: 630.954.7374
F: 630.954.7304
KReinke@MidAmericaGrp.com

Brian
Adams

Mid-America Real Estate Corp
T: 630.954.7512
F: 630.954.7304
BADams@MidAmericaGrp.com



One Parkview Plaza, 9th Floor
Oakbrook Terrace, Illinois 60181
630.954.7327
MidAmericaGrp.com

CONTACT