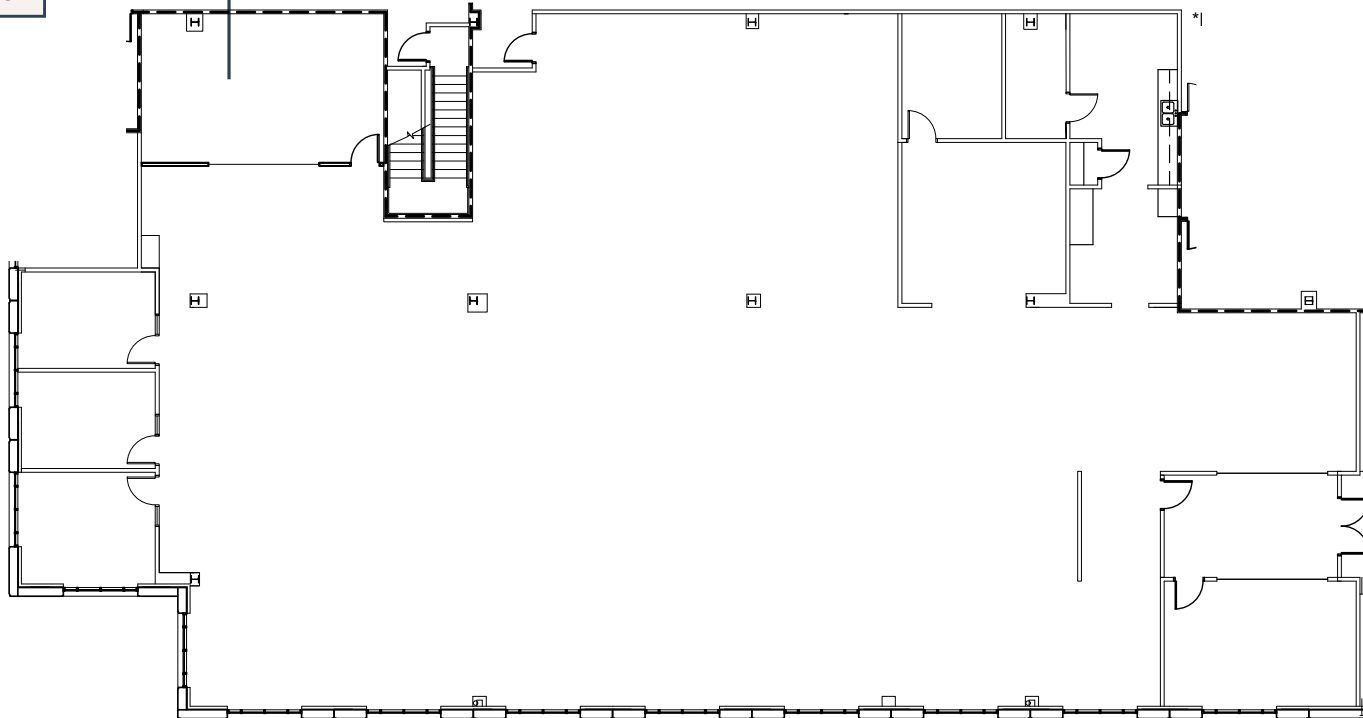
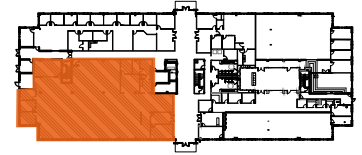


# SUITE 140

2250 PERIMETER PARK DRIVE | MORRISVILLE, NC 27560

# 2250 PERIMETER

**SUITE 140**  
11,383 RSF



## LEASING CONTACTS

**William Allen**

Managing Partner

919.415.4390 | [wallen@trinity-partners.com](mailto:wallen@trinity-partners.com)

**Alex Dunn**

Director, Office Leasing

919.415.4405 | [adunn@trinity-partners.com](mailto:adunn@trinity-partners.com)