



**50,486 SF**

**FOR LEASE / SALE**

## 955 E Algonquin Rd.

Arlington Heights, Illinois 60005

One Oakbrook Terrace  
Suite 400  
Oakbrook Terrace, Illinois 60181  
+1 630 932 1234

[hiffman.com](http://hiffman.com)

### PROPERTY HIGHLIGHTS

- Available: 50,486 SF
- 2nd Floor Space: 11,706 SF
- Site: 2.178 AC
- Loading Docks: 6 Total, 2 Interior
- Drive-In Doors: 1
- Clear Height: 18'5"
- Parking Ratio: 1.00/1,000 SF
- Construction: Masonry
- Power: 800 amps / heavy
- Year Built: 1970



50,486 SF  
BUILDING



7,993 SF  
2nd FLOOR OFFICE



50 AUTO  
PARKING SPACES



2 INTERIOR DOCKS  
1 DRIVE-IN DOOR



18'5" CEILING  
HEIGHT



800 AMPS

### Contact

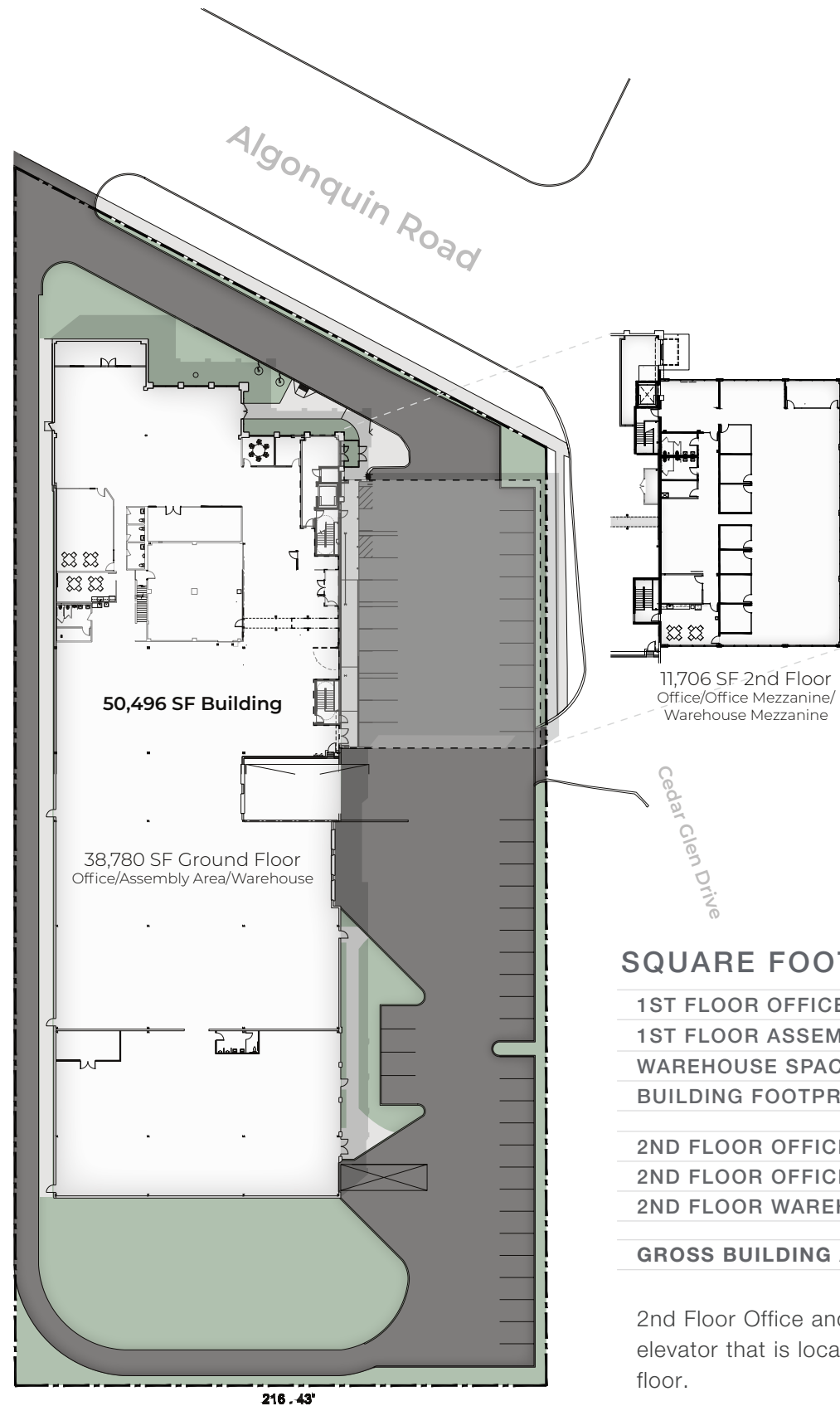
David Haigh, CCIM  
+1 630 693 0649  
dhaigh@hiffman.com

Tak O'Haru  
+1 847 772 4028  
toharu@whitecubellc.com

Nick Feczko  
+1 630 693 0668  
nfezko@hiffman.com

NO WARRANTY OR REPRESENTATION, EXPRESS OR IMPLIED, IS MADE AS TO THE ACCURACY OF THE INFORMATION CONTAINED HEREIN, AND THE SAME IS SUBMITTED SUBJECT TO ERRORS, OMISSIONS, CHANGE OF PRICE, RENTAL OR OTHER CONDITIONS, PRIOR SALE, LEASE OR FINANCING, OR WITHDRAWAL WITHOUT NOTICE, AND OF ANY SPECIAL LISTING CONDITIONS IMPOSED BY OUR PRINCIPALS. NO WARRANTIES OR REPRESENTATIONS ARE MADE AS TO THE CONDITION OF THE PROPERTY OR ANY HAZARDS CONTAINED THEREIN ARE ANY TO BE IMPLIED.

SITE PLAN



SQUARE FOOTAGE BREAKDOWN

1ST FLOOR OFFICE:	2,949 SF
1ST FLOOR ASSEMBLY AREA:	2,000 SF
WAREHOUSE SPACE:	33,831 SF
BUILDING FOOTPRINT:	38,780 SF
2ND FLOOR OFFICE:	7,993 SF
2ND FLOOR OFFICE MEZZANINE:	1,483 SF
2ND FLOOR WAREHOUSE MEZZANINE:	2,230 SF
<b>GROSS BUILDING AREA:</b>	<b>50,486 SF</b>

2nd Floor Office and Mezzanine Areas are served by elevator that is located in the lobby area of the first floor.

BUILDING PHOTOS



PHOTO GALLERY

1. Main Office
2. Showroom
3. Covered Parking
4. Loading
5. Warehouse

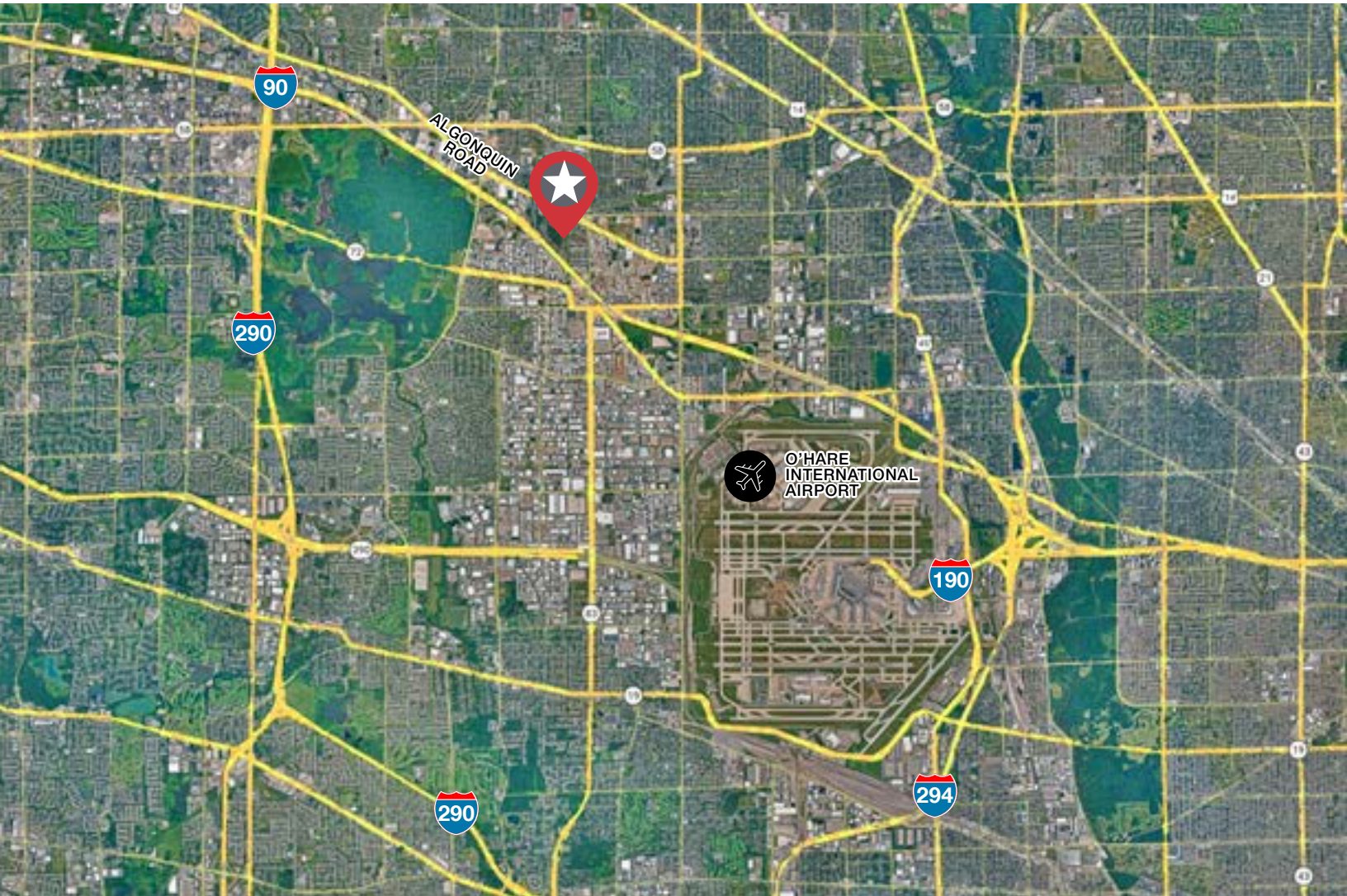


955 E ALGONQUIN RD,  
ARLINGTON HEIGHTS, IL | FOR LEASE/SALE

This property offers excellent accessibility to major regional thoroughfares, with convenient access to Route 53 and Interstate 90. Available space for lease includes a total of approximately 50,486 SF of warehouse and office space, suitable for a variety of industrial users. The building features ample parking based on a 1/1,000 SF ratio, along with efficient loading capabilities to support distribution and light manufacturing operations. Strategically located in Arlington Heights, the property provides strong connectivity to O'Hare International Airport and the greater Chicago market.



Pictured: Aerial Overview



## Contact

David Haigh

+1 630 693 0649

dhaigh@hiffman.com

Nick Feczko

+1 630 693 0668

nfeczko@hiffman.com

Tak O'Haru

+1 847 772 4028

toharu@whitecubellc.com

NAI Hiffman

WHITE CUBE  
Real Estate | Business Solutions

One Oakbrook Terrace  
Suite 400  
Oakbrook Terrace, Illinois 60181  
+1 630 932 1234