

# FOR LEASE

## 333 EAST BAY STREET

Jacksonville, FL 32202



### OFFERING SUMMARY

Lease Rate:	\$17.00 - 19.00 SF/yr (NNN)
Building Size:	23,081 SF
Available SF:	1,880 - 23,081 SF
Zoning:	CCBD

### PROPERTY OVERVIEW

This space on Bay St. offers amazing view's of the St. John's River and has the potential for rooftop. Office suites are available along with event & restaurant space. Event space is Located directly above Myth Nightclub, Element Bistro & Craft Bar, and Live Bar & Seafood.

### LOCATION OVERVIEW

Located on Bay St. in the heart of Downtown Jacksonville's restaurant and bar scene, this opportunity present's venue and office spaces alike.

### PROPERTY HIGHLIGHTS

- Office, event & restaurant spaces available
- Near recently opened Cinco De Mayo, Lettuce Eat & Breezy Jazz House Coming Soon
- Excellent view of the St. John's River

#### PRESENTED BY:

**RICHARD SAIG**

904.318.5144

richard@kinkadecommercial.com

**AMANDA KINKADE**

904.635.6376

amanda@kinkadecommercial.com

# FOR LEASE

## 333 EAST BAY STREET



2929 Plummer Cove Rd., Suite 2  
Jacksonville, FL 32223

Jacksonville, FL 32202



**PRESENTED BY:**

**RICHARD SAIG**

904.318.5144

richard@kinkadecommercial.com

**AMANDA KINKADE**

904.635.6376

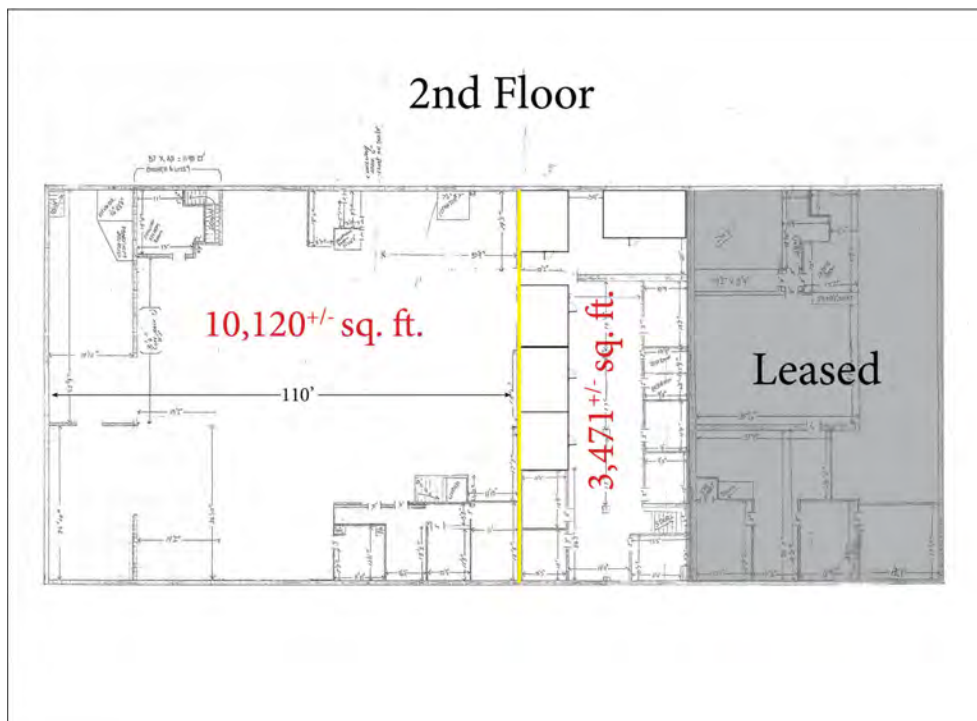
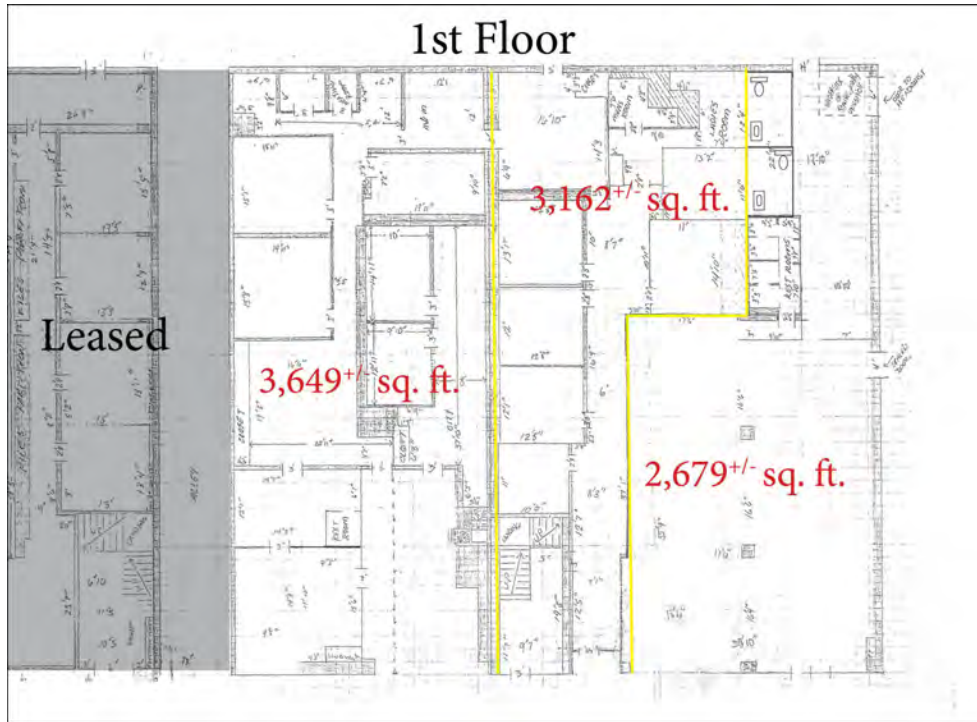
amanda@kinkadecommercial.com

ADDITIONAL PHOTOS

# FOR LEASE

## 333 EAST BAY STREET

Jacksonville, FL 32202



**PRESENTED BY:**

**RICHARD SAIG**

904.318.5144

richard@kinkadecommercial.com

**AMANDA KINKADE**

904.635.6376

amanda@kinkadecommercial.com

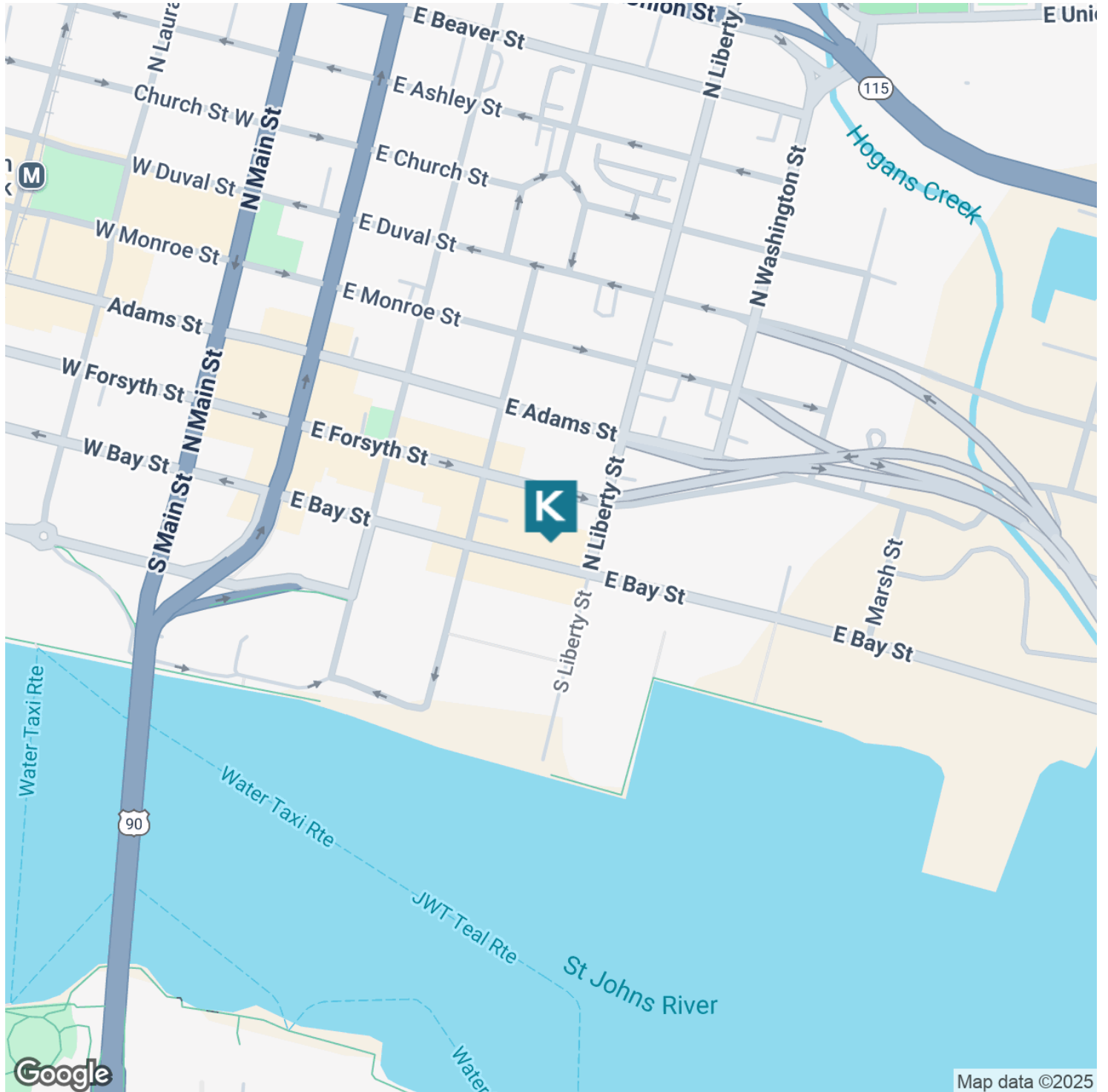
# FOR LEASE

## 333 EAST BAY STREET



2929 Plummer Cove Rd., Suite 2  
Jacksonville, FL 32223

Jacksonville, FL 32202



PRESENTED BY:

**RICHARD SAIG**

904.318.5144

richard@kinkadecommercial.com

**AMANDA KINKADE**

904.635.6376

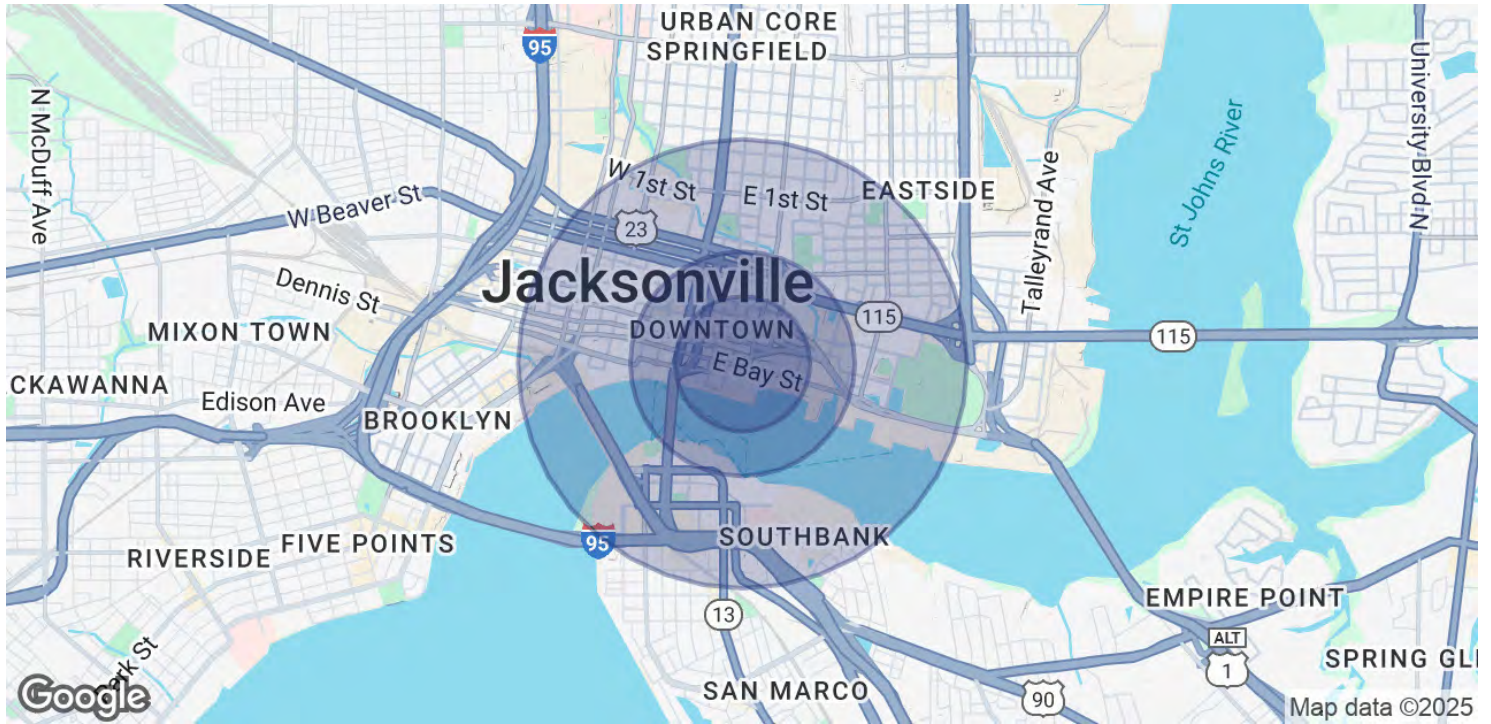
amanda@kinkadecommercial.com

LOCATION MAP

# FOR LEASE

## 333 EAST BAY STREET

Jacksonville, FL 32202



POPULATION	0.3 MILES	0.5 MILES	1 MILE
Total Population	3,066	5,370	10,602
Average Age	43	43	43
Average Age (Male)	39	40	41
Average Age (Female)	52	51	47

HOUSEHOLDS & INCOME	0.3 MILES	0.5 MILES	1 MILE
Total Households	710	1,540	4,334
# of Persons per HH	4.3	3.5	2.4
Average HH Income	\$27,851	\$32,399	\$46,989
Average House Value	\$130,264	\$157,393	\$232,281

Demographics data derived from AlphaMap

**PRESENTED BY:**

**RICHARD SAIG**

904.318.5144

richard@kinkadecommercial.com

**AMANDA KINKADE**

904.635.6376

amanda@kinkadecommercial.com