

1210 LEXINGTON



UPPER EAST SIDE | UPSCALE RESIDENTIAL

RETAIL SPACE FOR LEASE

275 RSF
Ground Floor

NEW YORK, NEW YORK

Prime Location on
Highly Visible First Ave
Unit: **Ground Floor**
RSF: **275**
Frontage: **8' 6"**
Avail: **Immediate**
Price: **\$4000/Mo**

High Visibility Upper East Side
9'2" - 10' 6" Ceiling Height

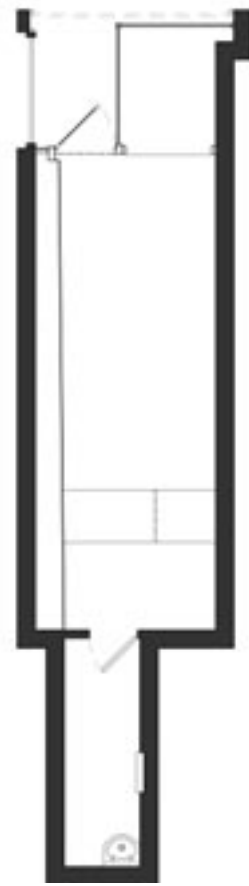
Scott Klatsky
(212)206-6155
sklatsky@timeequities.com



Scott Schneidman
(212)206-6163
sschneidman@timeequities.com

1210 LEXINGTON

275 RSF
Ground
Floor ▼



UPPER EAST SIDE | UPSCALE RESIDENTIAL

RETAIL SPACE FOR LEASE

275 RSF
Ground
Floor

NEW YORK, NEW YORK



No warranty, or representation is made as to the accuracy of the above information and same is submitted subject to errors, omissions, change of price, rental or other conditions, prior lease or withdrawal without notice, and to any special listing conditions, including the rate and manner of payment of commissions for particular offering, the terms of which are available to duly licensed brokers. This listing is subject to the aforesaid conditions and is not to be deemed an employment nor a binding contract of any kind unless or until our brokerage agreement is fully executed.

Scott Klatsky
(212)206-6155
sklatsky@timeequities.com



Scott Schneidman
(212)206-6163
sschneidman@timeequities.com

55 FIFTH AVE | 15TH FLOOR | NEW YORK, NY | 10003-4398 | 212-206-6000 | TIMEEQUITIES.COM