

MAIN ST WAREHOUSE

257 West Main Street
Johnson City, TN 37604

Location

On West Main Street between West Watauga Avenue and Whitney Street in Downtown Johnson City

Available for Lease

Unit 10: 1,200 SF warehouse/showroom
\$18/SF/year gross (includes NNN and utilities)

Highlights

- 2 grade-level roll-up doors
- Restroom
- Space is heated and cooled
- Secure, fenced parking lot
- Zoned B-3: Supporting Central Business District
- Less than one mile from I-26, exit 23

Traffic Counts

W Main St: 5,266 (2025)
W State of Franklin Rd: 15,793 (2025)

Demographics

(2025 Est.)	3 mile	5 mile	10 mile
Population	54,455	82,201	164,225
Median HH Income	\$50,246	\$53,748	\$61,037
Median Age	35.1	37.8	41.6

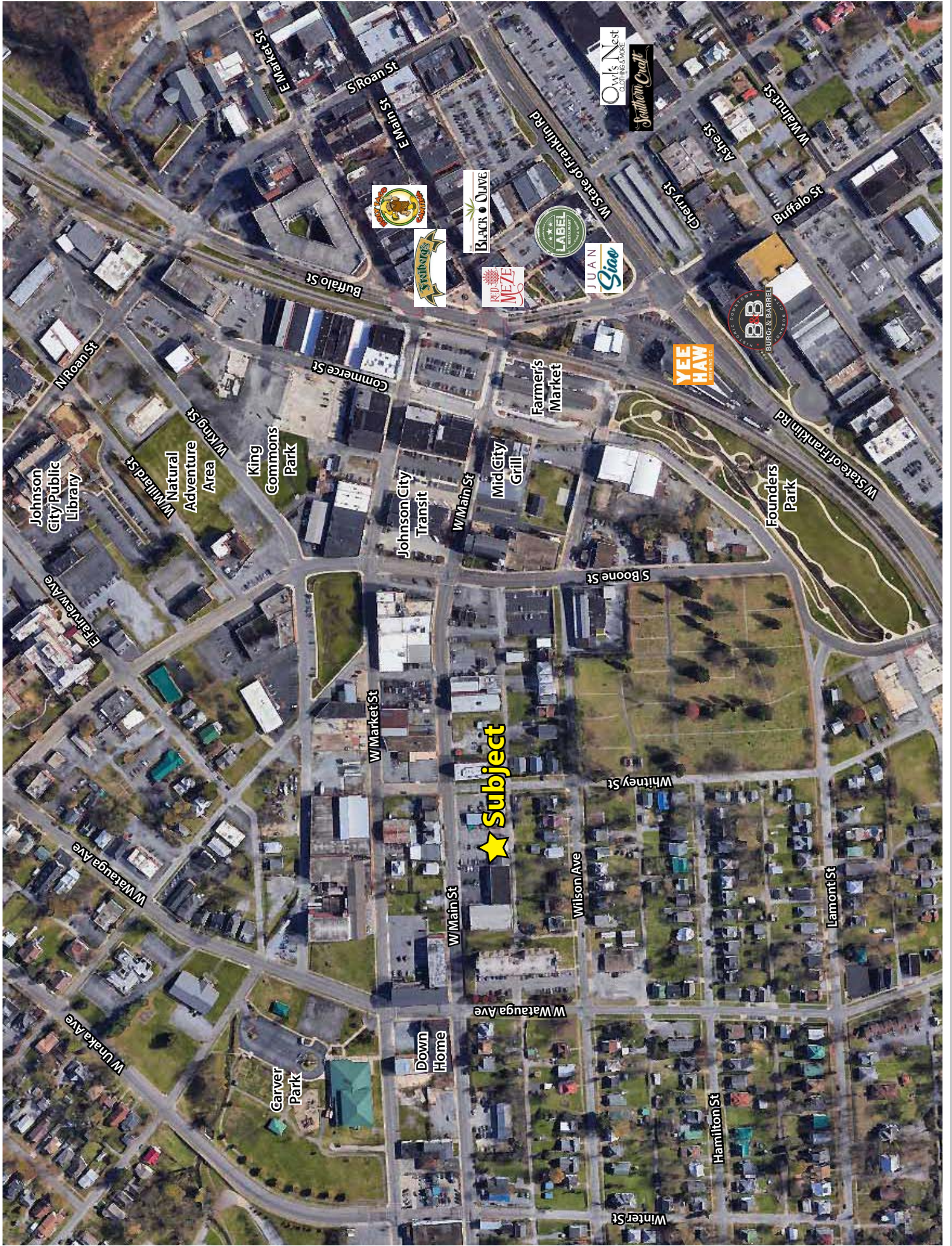
Contact

Shannon K. Castillo

Broker
shannon@mitchcox.com

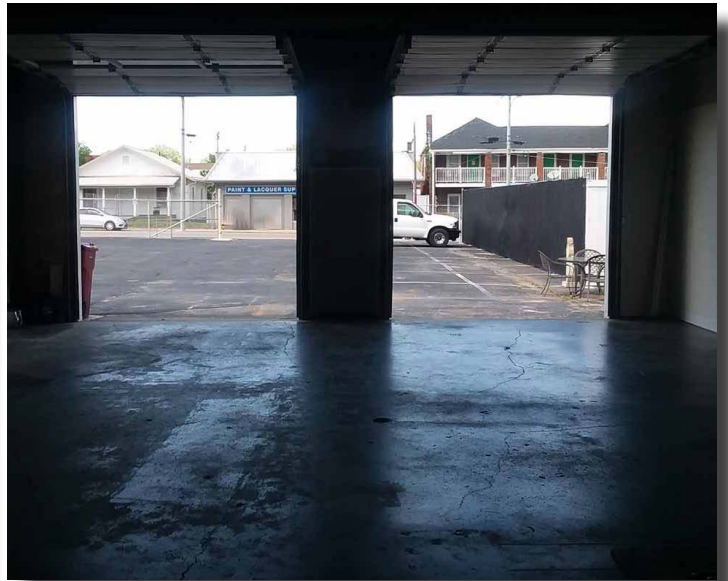
📞 423-282-6582 | 📠 423-282-5903
www.mitchcox.com





★ Subject





MITCH COX
REALTOR, INC.

2304 Silverdale Drive, Suite 200, Johnson City, TN 37601
423-282-6582 (o) 423-282-5903 (f) www.mitchcox.com