

Pacific Arts Plaza

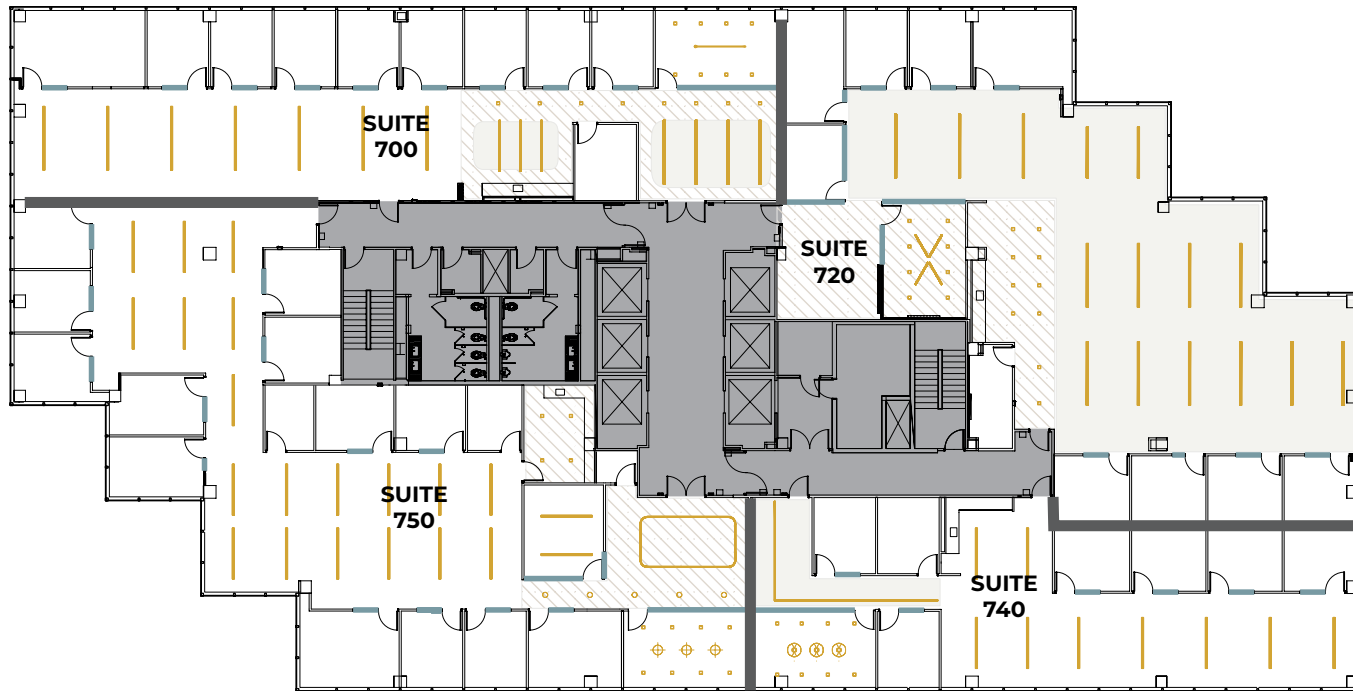
611 Anton Blvd. | 7th Floor

flex+[®]
BY IRVINE COMPANY



611 Anton Blvd.

7th Floor Overview



- 4 new, premium move-in ready suites ranging from 3.2K - 6.2K SF (Available August 2026)
- High-end suite finishes, including specialty lighting, open ceiling and premium break areas
- Convenient access to onsite amenities, including casual and fine-dining options, Kinetic Fitness center and an upgraded Venue Meetings & Events

611 Anton Blvd.

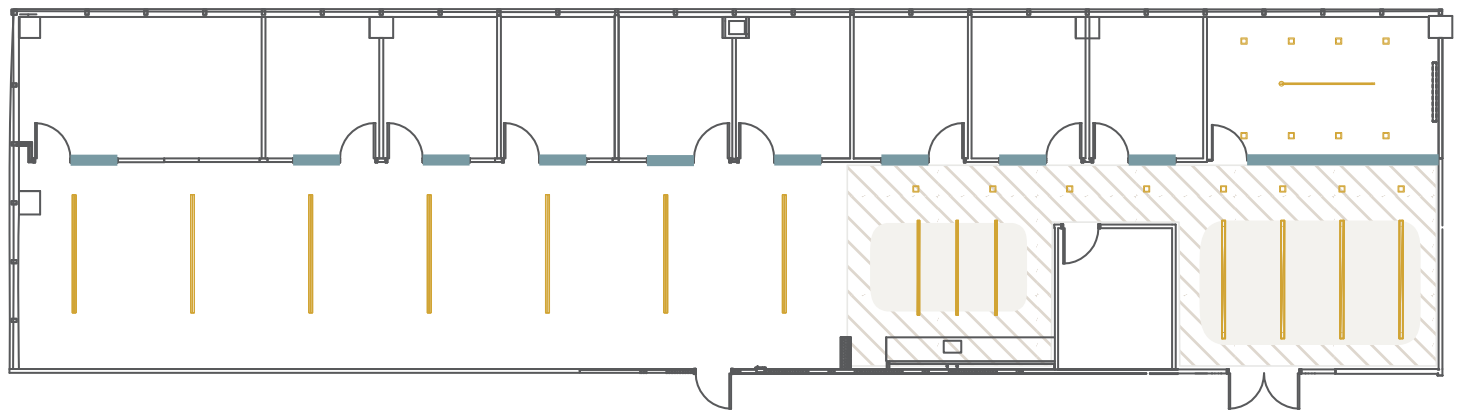
Suite 700




Total Size
±4,356 sqft

Team Size
19

Private Offices
9

Meeting Room
1

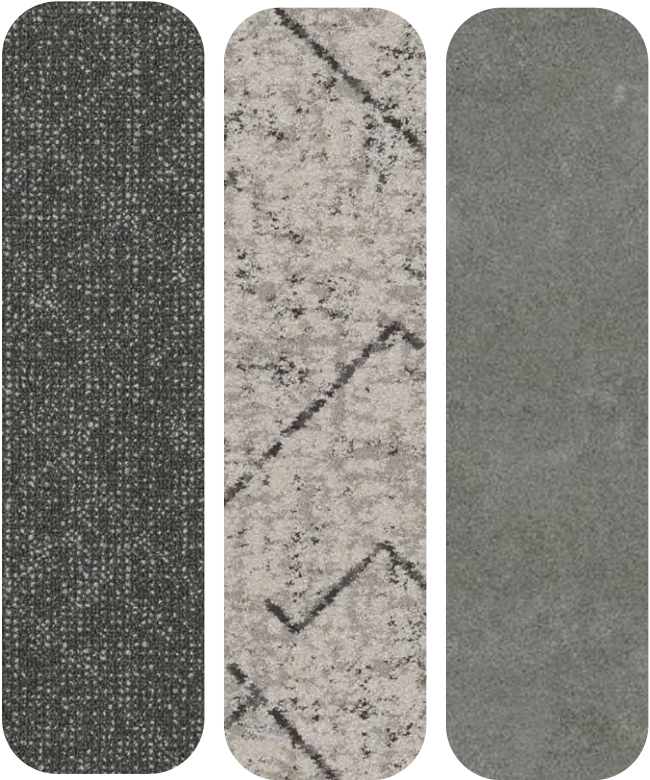


— GLASS  LIGHTS  OPEN CEILING  HARD LID CEILING

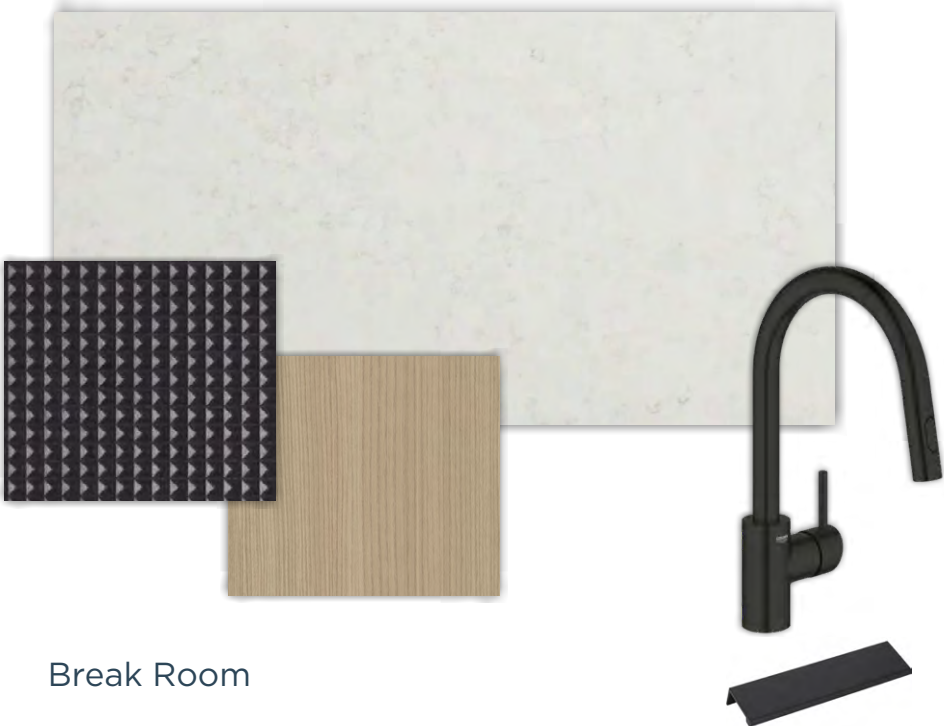
renderings



finish palette



Flooring



Break Room



Paint Scheme

611 Anton Blvd.

Suite 720




Total Size
±6,065 sqft

Team Size
27

Private Offices
8

Meeting Rooms
2



— GLASS  LIGHTS  OPEN CEILING  HARD LID CEILING

renderings



finish palette



Flooring



Break Room



Paint Scheme

611 Anton Blvd.

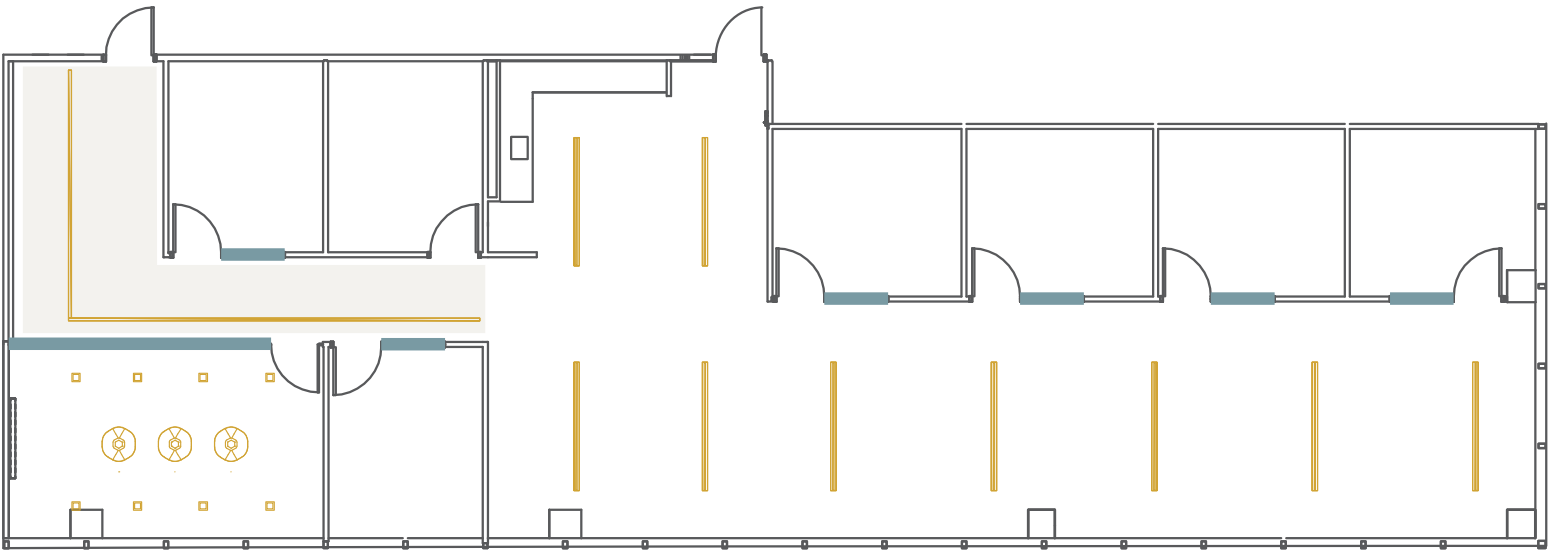
Suite 740

Total
Size
±3,271 sqft

Team
Size
15

Private
Offices
6

Meeting
Room
1



— GLASS  LIGHTS  OPEN CEILING

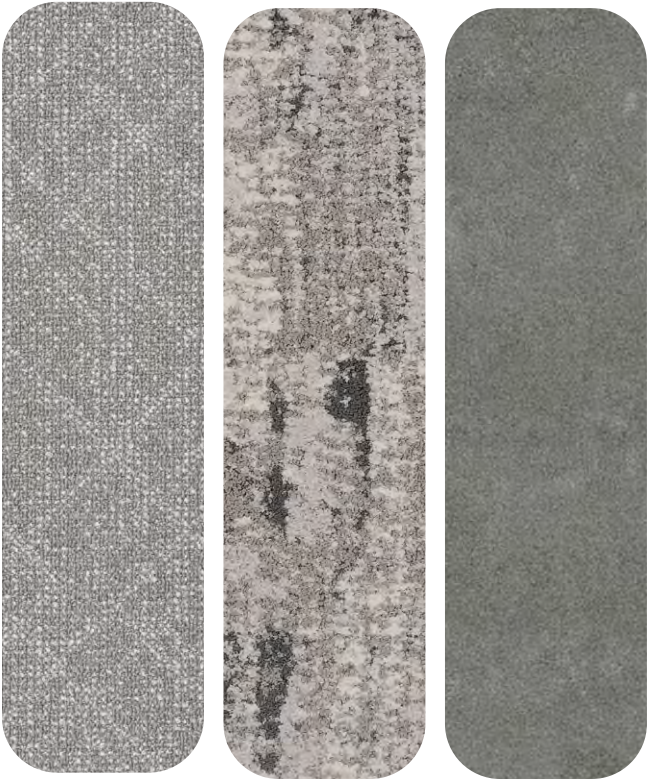
renderings



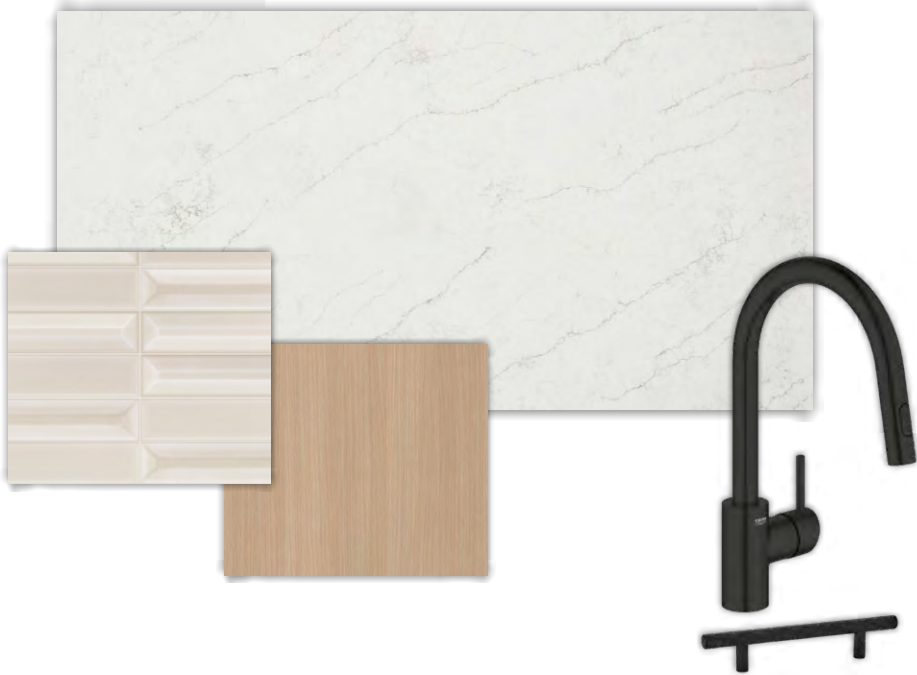
ARTIST RENDERING



finish palette



Flooring



Break Room



Paint Scheme

611 Anton Blvd.

Suite 750

Total Size
±6,289 sqft

Team Size
28

Private Offices
13

Meeting Rooms
2



GLASS LIGHTS HARD LID CEILING

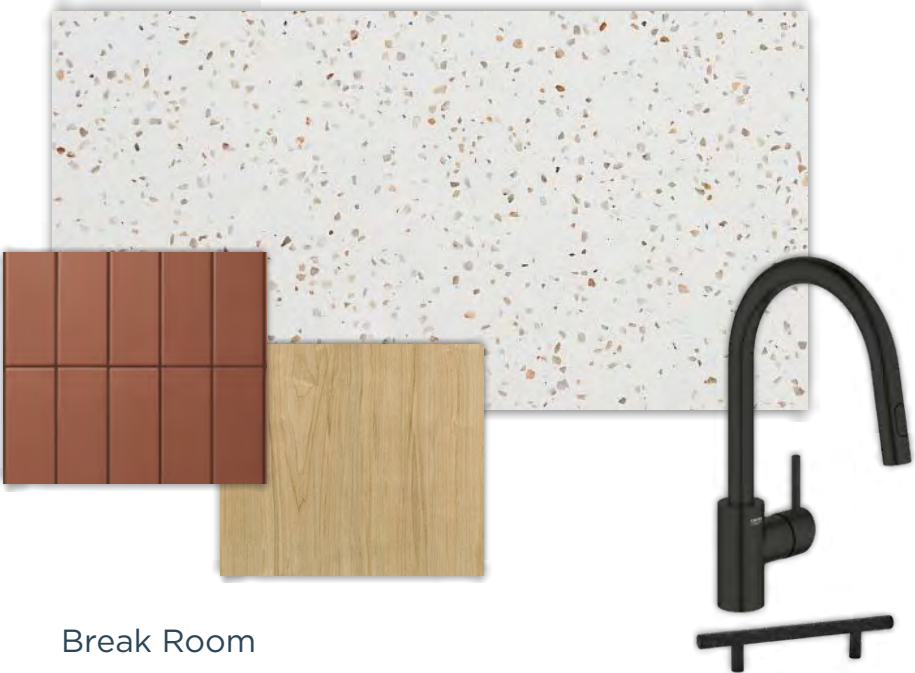
renderings



finish palette



Flooring

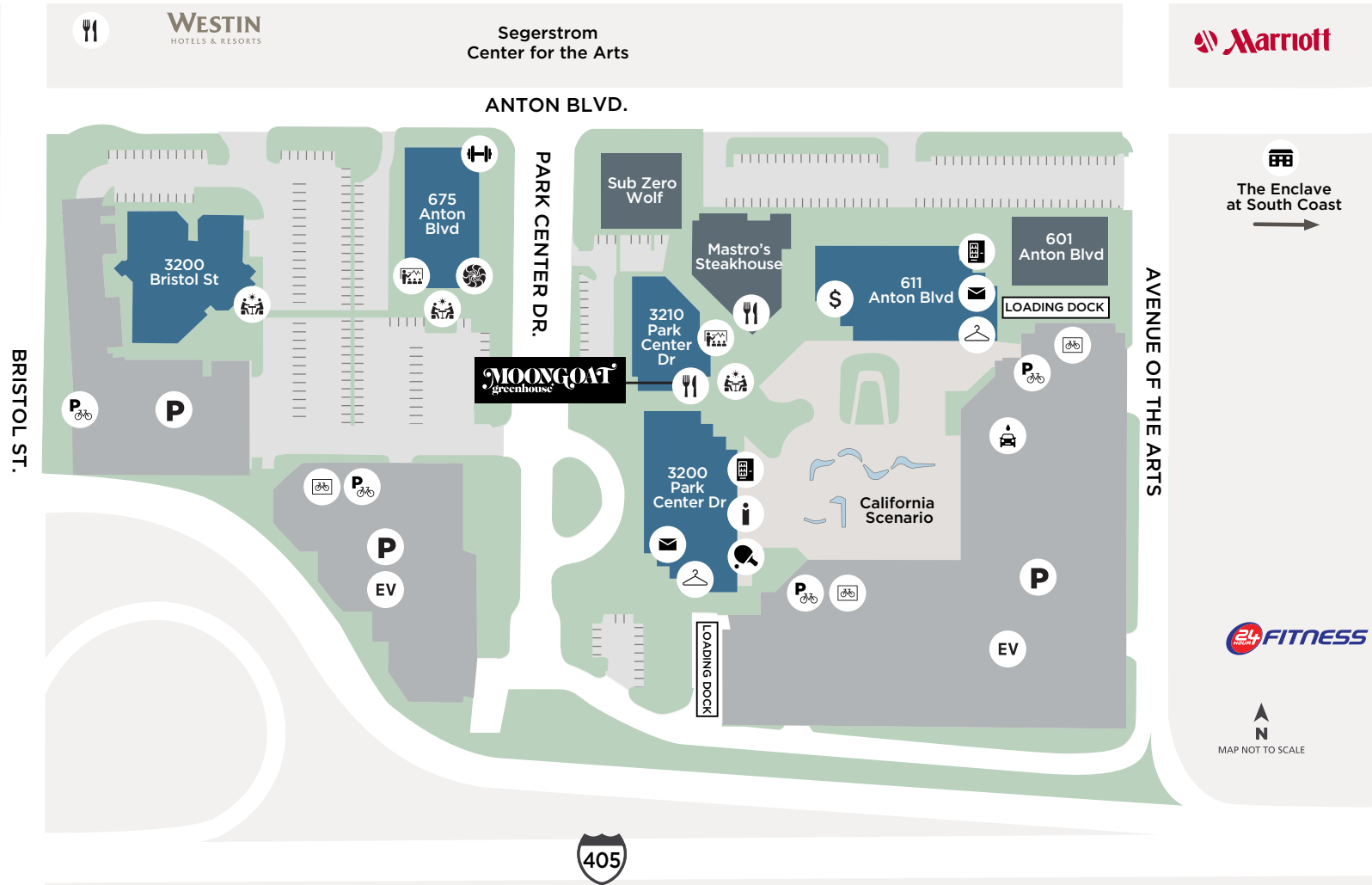


Break Room



Paint Scheme

Pacific Arts Plaza



SOUTH COAST PLAZA



The Lab/Camp Anti-Mall



APARTMENTS



ATM



AUTO DETAILING



BIKE LOCKERS



BIKE PARKING



CAFE/ RESTAURANT



CONFERENCE CENTER



CUSTOMER RESOURCE CENTER



DRY CLEANING



EV CHARGING



FITNESS



GAME LOUNGE



MAIL ROOM



OUTDOOR WORKSPACE (WIFI-ENABLED)



PARKING OFFICE



PARKING STRUCTURE



VENDING MACHINE



Modern Venue Meeting & Event Center

flexplus.com | 949.720.2550

All properties for lease by Irvine Management Company, a licensed real estate broker, DRE LIC. #02041810. Product and amenities are subject to availability. Images may not be to scale, all renderings/pictures shown are for information and illustration purposes only and are subject to change. Not all features available in all communities. Furniture not included. Not a representation or warranty. ©2026 Irvine Management Company. All Rights Reserved. The Sunwave, Irvine Company and Flex+ are registered trademarks of Irvine Management Company.