

Available now!



LOCATION - 4701 FM 2920 - Spring, TX 77388

\$17.00 per sq ft

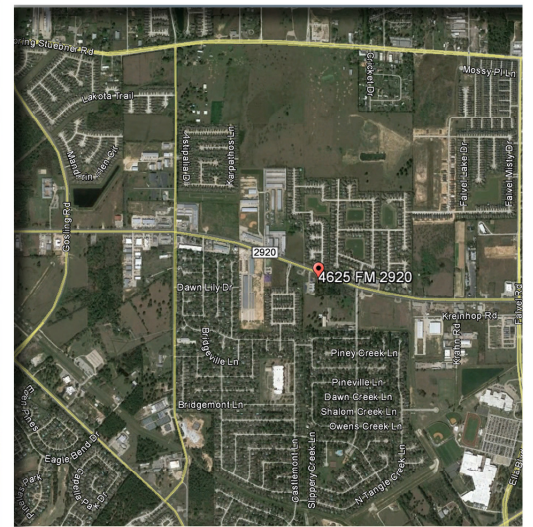
PROPERTY DESCRIPTION

Located in Spring Great proximity to: 4.0 miles from Interstate 45 , 6.2 miles from the new Exxon Mobile Campus, 8.5 miles from 249, 2.4 miles from the Grand Parkway (99)

- Perfect location for Office Medical, Professional Office, and established retail.
- Upscale and efficiently designed offices
- Office community consists of multiple single-story condos.
- 1,000 to 6,000 square feet of highly efficient space divisible into a variety of functions.
- Ideal setting for many types of business and organizations
- High Density Residential Area Population with average traffic of over 19,000 vehicles per day on FM 2920.

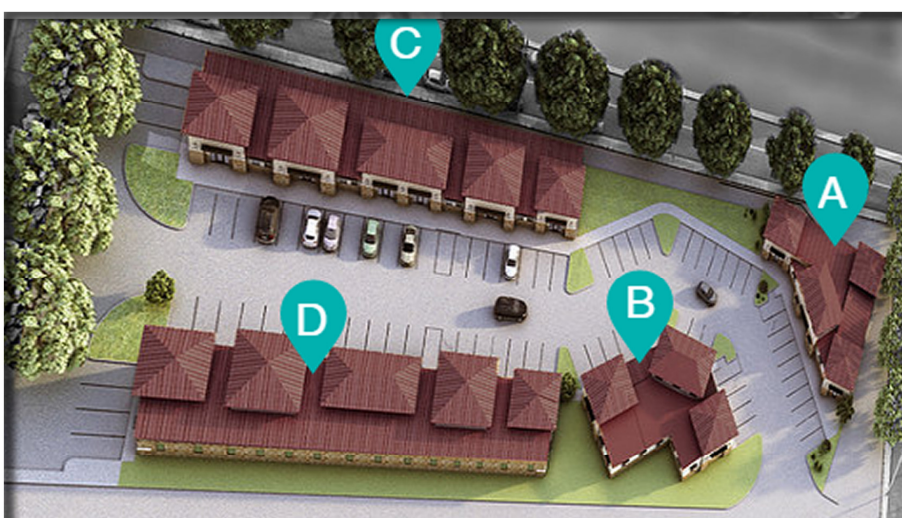


PROPERTY



Building Information

- | | |
|----------------|---|
| Bldg. A | Leasable Area 4,600 S.F
Parking Ratio 3.9 cars / 1,000 S.F
Parking Required 15 cars |
| Bldg. B | Leasable Area 3,488 S.F
Parking Ratio 3.9 cars / 1,000 S.F
Parking Required 11 cars |
| Bldg. C | Leasable Area 6,098 S.F
Parking Ratio 3.9 cars / 1,000 S.F
Parking Required 23 cars |
| Bldg. D | Leasable Area 6,098 S.F
Parking Ratio 3.9 cars / 1,000 S.F
Parking Required 23 cars |



AIM Commercial Brokerage
5509 Louetta, Suite B
Spring, TX 77379

Amythyst L. Manning
Development Associate
Amythyst@aimcb.com
713.248.1995 Ofc
832.369.7302 Fax