

FOR LEASE

2042 E SOUTH ST

LONG BEACH, CA 90805



Rare opportunity to lease 1.63 acres of industrial zoned land in Long Beach.

Terrific street frontage on Cherry Avenue and East South Street

Distance 1.2 miles to 91 freeway, 2.5 miles to 710 freeway and 3.25 miles to 405 freeway

Ideal for equipment storage, contractors yard or outside storage

±8,396 SF amongst 3 buildings with approximately 1,200 SF of new offices

Entire site paved, fenced and lit

±8,396

TOTAL SF AVAILABLE

±1,200

SF OF OFFICE SPACE

3

BUILDINGS

MARC D. BONANDO, SIOR
SVP | Managing Director
310.906.3290
marc.bonando@kidder.com
LIC N° 01348269

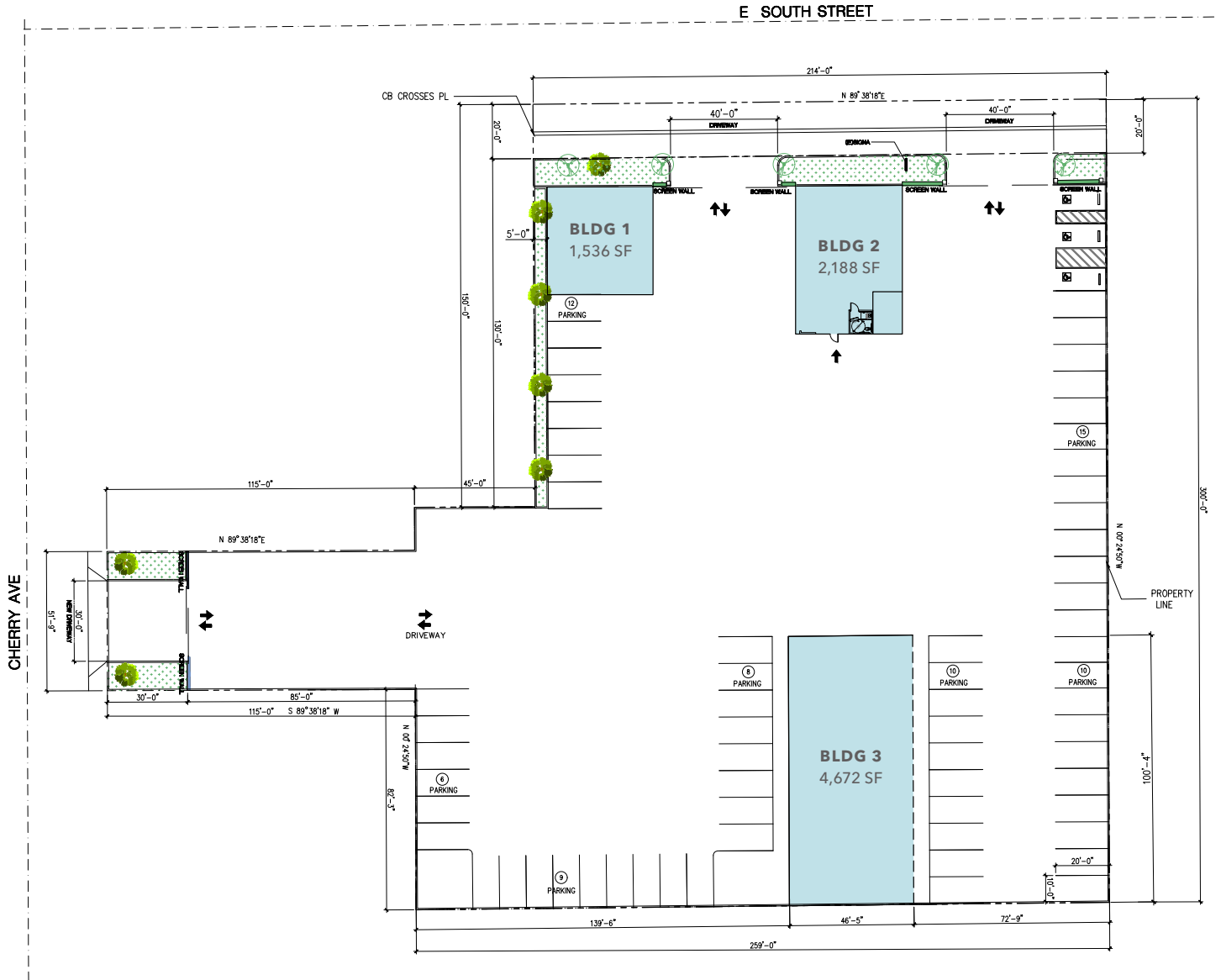
IAN STEVENSON
Vice President
310.906.3277
ian.stevenson@kidder.com
LIC N° 02045140

KIDDER.COM

This information supplied herein is from sources we deem reliable. It is provided without any representation, warranty, or guarantee, expressed or implied as to its accuracy. Prospective Buyer or Tenant should conduct an independent investigation and verification of all matters deemed to be material, including, but not limited to, statements of income and expenses. Consult your attorney, accountant, or other professional advisor.

km Kidder Mathews

SITE PLAN



MARC D. BONANDO, SIOR
 SVP | Managing Director
 310.906.3290
 marc.bonando@kidder.com
 LIC N° 01348269

IAN STEVENSON
 Vice President
 310.906.3277
 ian.stevenson@kidder.com
 LIC N° 02045140

KIDDER.COM

This information supplied herein is from sources we deem reliable. It is provided without any representation, warranty, or guarantee, expressed or implied as to its accuracy. Prospective Buyer or Tenant should conduct an independent investigation and verification of all matters deemed to be material, including, but not limited to, statements of income and expenses. Consult your attorney, accountant, or other professional advisor.

