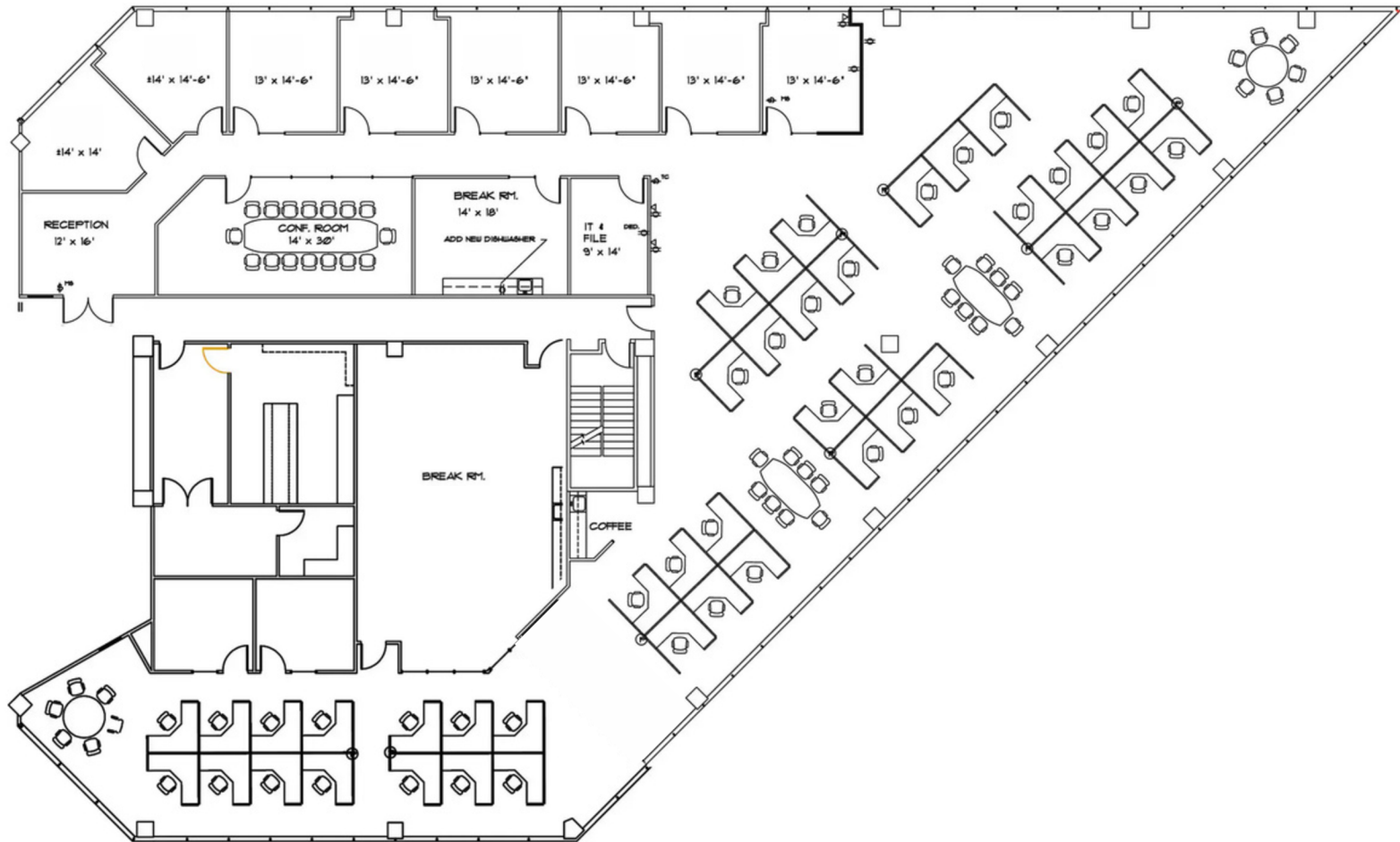
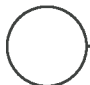


FOR LEASE | OFFICE | 2550 GRAY FALLS DRIVE



 SUITE 450
12,114 Square Feet

MATT EASTERLING
713.325.4112
measterling@landparkco.com

2550 Gray Falls Drive, Suite 400 | Houston, TX 77077
713-789-2200 | LandParkCo.com

The information contained herein is believed to be correct. However, no warranty or representation is made. All prices are subject to change without notice and property is subject to prior lease, sale or withdrawal from the market without notice.