

Industrial Building for Sale and Lease

26615 FALLBROOK AVENUE N | WYOMING, MN

15,164 Sq. Ft. Building

I-Industrial Zoning

Easy Access to Hwy 61



Cetra Partners

4455 White Bear Parkway, Suite 600
White Bear Lake, MN 55110

Dan Friedner | Principal
M: 612-599-7864
E: dan@cetrapartners.com

Jay Chmielecki | Principal
M: 612-275-3772
E: jay@cetrapartners.com

Patrick Cullen | Principal
M: 651-308-4271
E: patrick@cetrapartners.com

Property Overview

LOCATION

26615 Fallbrook Avenue N | Wyoming, MN

BUILDING SIZE

Approx. 2,118 Sq. Ft. - Office

Approx. 1,200 Sq. Ft. - Office Mezzanine

Approx. 11,846 Sq. Ft. - Warehouse

Approx. 15,164 Sq. Ft. - Total

LOT SIZE

0.96 Acres (41,840 Sq. Ft.)

LOADING

One (1) 12' Wide x 14' High Drive-In Door

One (1) 10' Wide x 10' High Drive-In Door

CLEAR HEIGHT

Approx. 14'

LEASE RATES

\$12.00 Per Sq. Ft. - Office

\$6.00 Per Sq. Ft. - Warehouse

2026 EST. RE TAXES

\$20,988.00

SALE PRICE

\$1,475,000 or \$97.27 Per Sq. Ft.



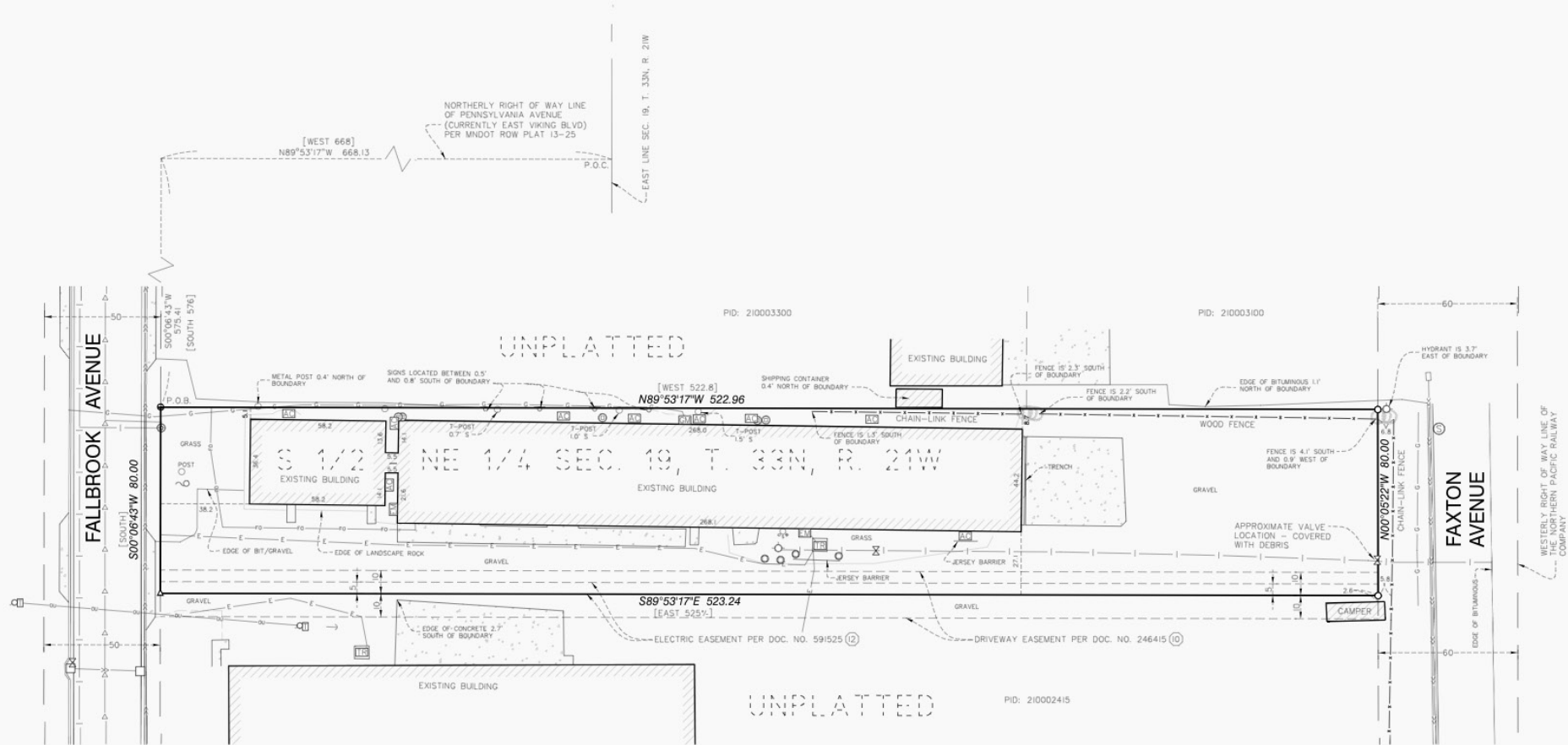
PROPERTY HIGHLIGHTS

- Easy access to Highway 61 & I-35
- Heavy power. Previously used as a manufacturing facility

Industrial Building for Sale and Lease

26615 FALLBROOK AVENUE N | WYOMING, MN

Survey -
15,164 Sq. Ft. Building



Industrial Building for Sale and Lease

26615 FALLBROOK AVENUE N | WYOMING, MN

GIS Map -
15,164 Sq. Ft. Building



Industrial Building for Sale and Lease

26615 FALLBROOK AVENUE N | WYOMING, MN

Aerial Map View -
15,164 SF Available

