



VALUE INDUSTRIAL PARTNERS, LLC

Industrial Real Estate Investment, Brokerage and Management

477 W. Wrightwood Avenue, Elmhurst, Illinois 60126 TEL: 630-333-1900 FAX: 630-333-1910

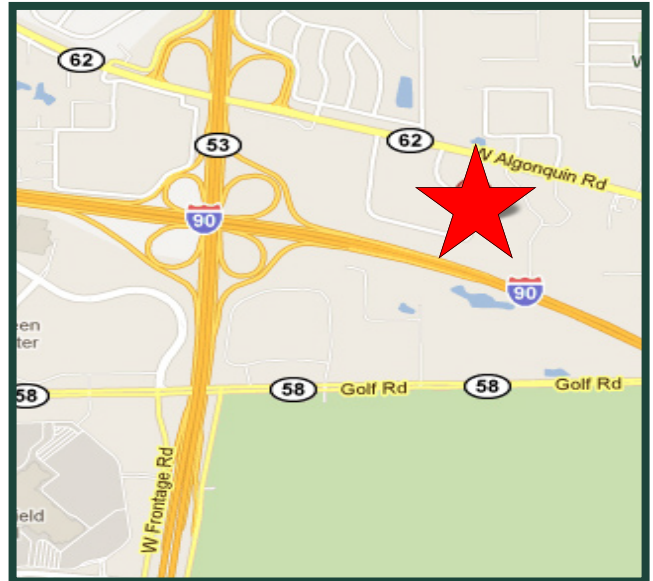


5420 Newport Drive, Unit 47 Rolling Meadows, Illinois

FOR LEASE
2,513 SF

Building Specifications

Available Size:	2,513 Square Feet
Building Size:	157,167 Square Feet
Office Size:	25-75%
Ceiling Height:	12'
Loading:	1 Drive-in Door (8' X 10')
Heat:	Gas
Sprinklers:	Yes
Power:	100 Amps/3 Phase
Taxes:	Included with Current Stop
Operating Expenses:	Included with Current Stop



For Further Information, Please Contact:

Brian P. Gedvilas, Director of Leasing
bgedvilas@valueindustrialpartners.com

Jennifer L. Dobrowolski
jdobrowolski@valueindustrialpartners.com

TEL: 630-333-1900 FAX: 630-333-1910

Comments

- Professionally owned and managed
- Prime location at Rt. 53 & I-90
- 3 Private offices & 1 Kitchen
- Individual Drive-In Door

Officers of the firm have an ownership interest in this property.
Submitted subject to error, change in status, or withdrawal without notice.



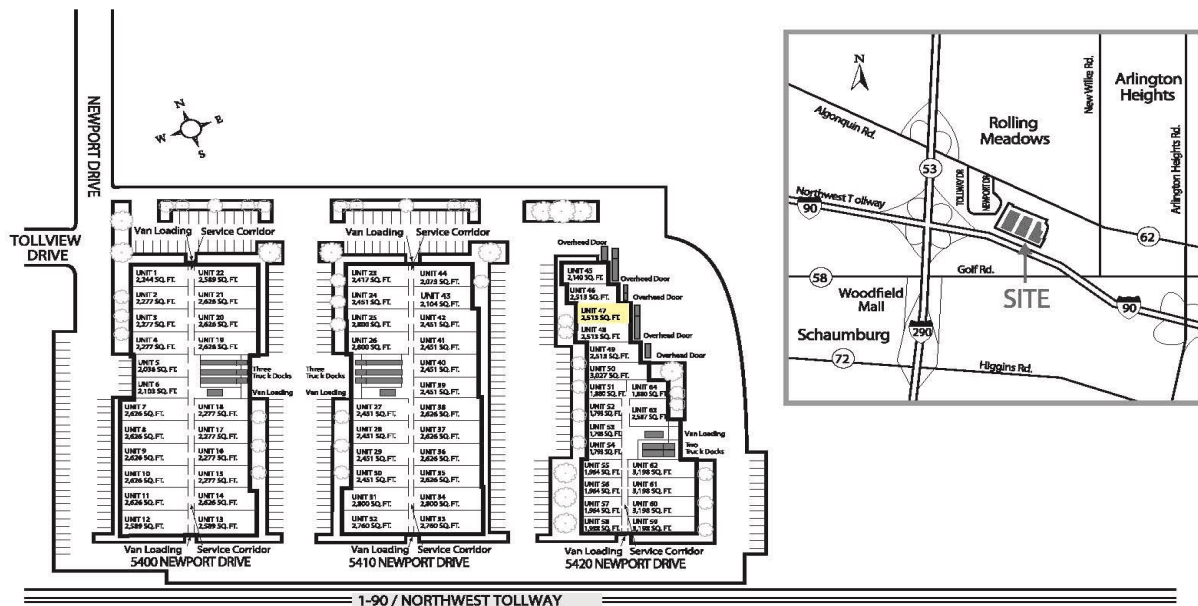
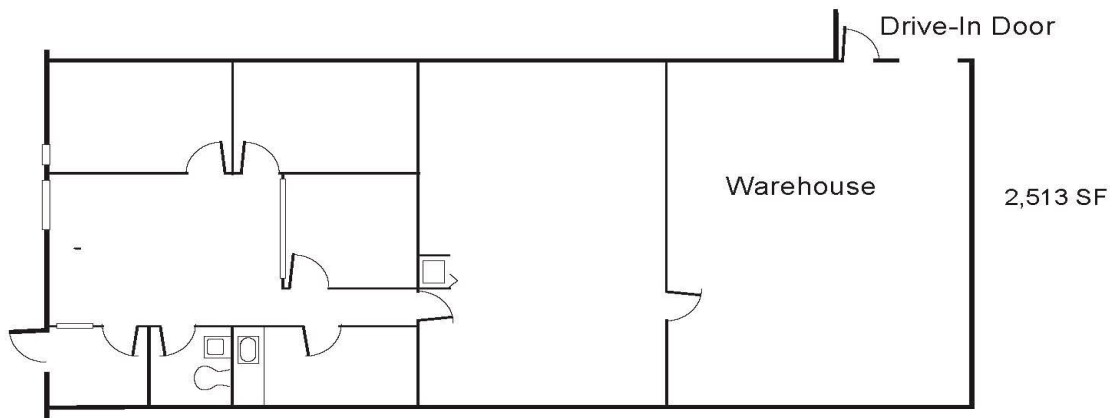
VALUE INDUSTRIAL PARTNERS, LLC

Industrial Real Estate Investment, Brokerage and Management

477 W. Wrightwood Avenue, Elmhurst, Illinois 60126 TEL: 630-333-1900 FAX: 630-333-1910

LAYOUT

Mercury Corporate Centre - Rolling Meadows 5420 Newport Drive • Unit 47 • Rolling Meadows, IL



FOR ILLUSTRATION PURPOSES ONLY.

Officers of the firm have an ownership interest in this property.
Submitted subject to error, change in status, or withdrawal without notice.