

FOR LEASE

SUITE D | ±1,080 SF



ADMIRAL CORNER

1625 Donna Drive, Virginia Beach, VA 23451

Office / Retail Flex Available For Lease



CUSHMAN &
WAKEFIELD

THALHIMER

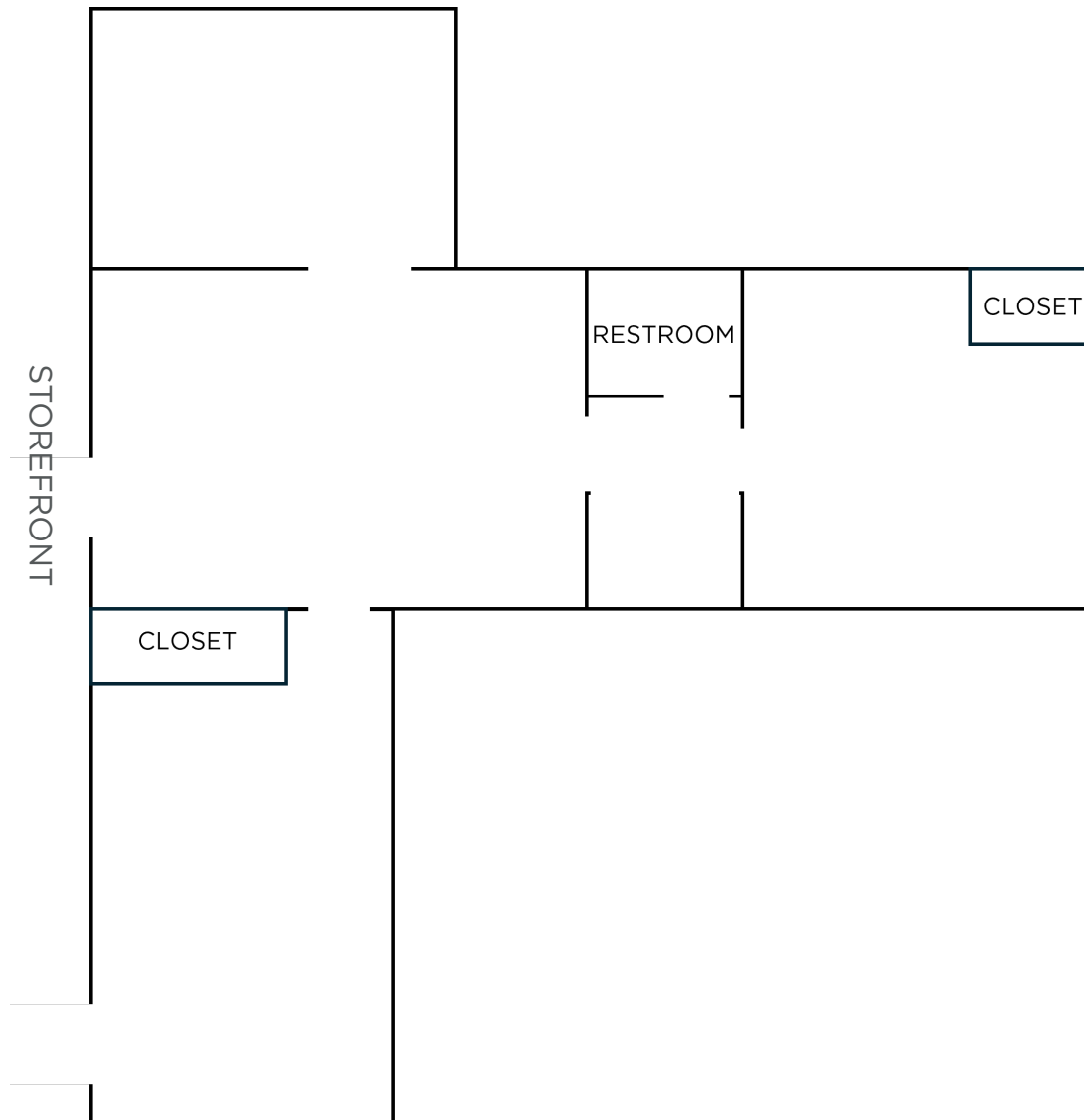
PROPERTY HIGHLIGHTS

- ±1,080 SF Inline
- Zoning: B-2 | The Hilltop Opportunity Zone
- 46' Store frontage
- Approximately 59,000 VPD at nearest intersection
- Immediate access to I-264 (66,000 VPD)
- Minutes to Virginia Beach Oceanfront, multiple private golf courses, high income neighborhoods and Naval Air Station Oceana
- \$1,750/month, Net of Utilities

DEMOGRAPHICS

	1 Mile	3 Miles	5 Miles
Population	9,457	61,800	130,911
Daytime Population	10,357	73,479	150,503
No. of Households	4,455	27,578	54,081
Average Household Income	\$89,737	\$118,909	\$121,129
Median Household Income	\$63,795	\$77,777	\$81,560
Median Age	33.1	37.9	38.1
Education 25+	69.2%	77.5%	74.6%





FLOOR PLAN
1,080 SF



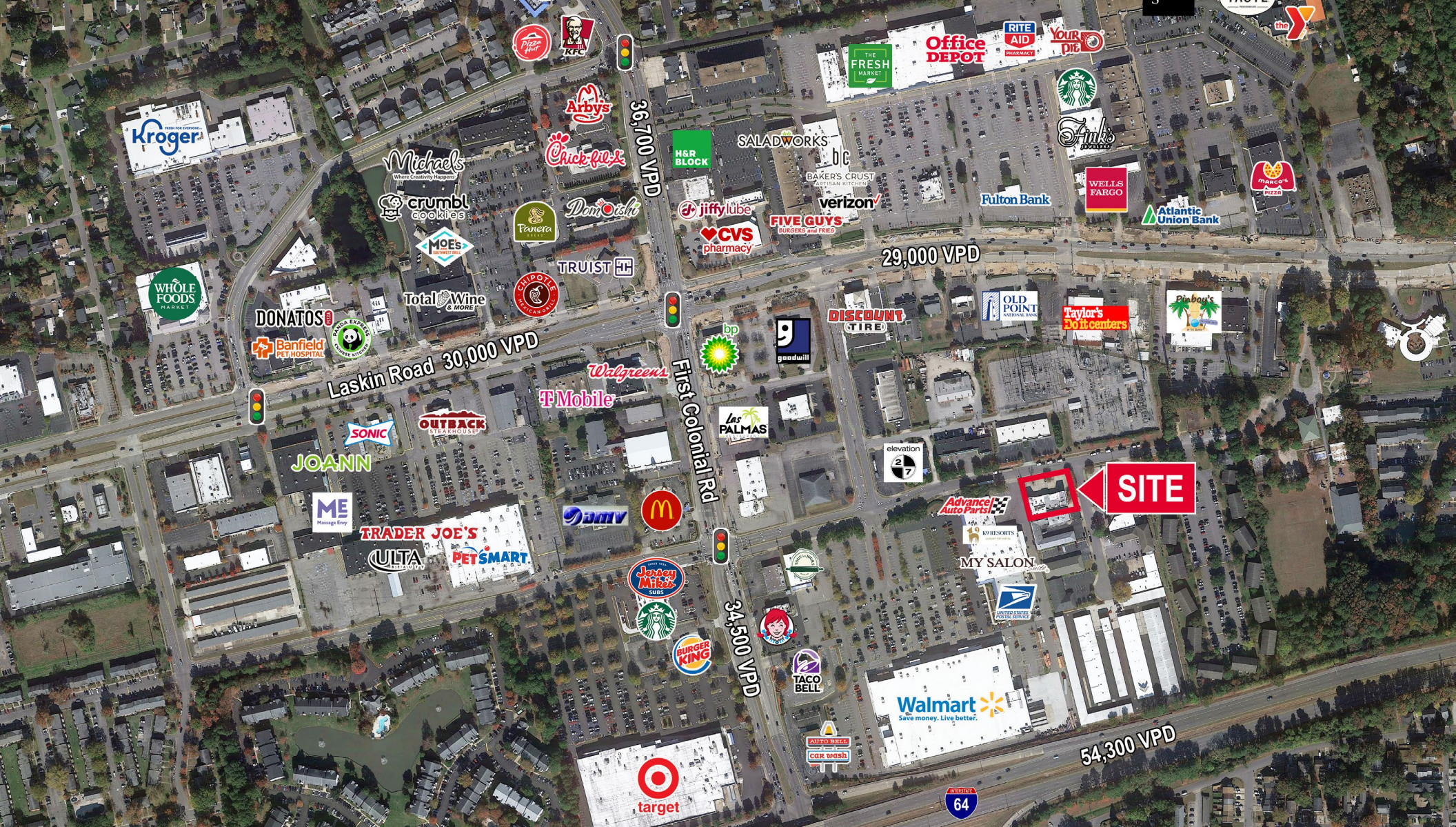
**PYLON &
BUILDING
SIGNAGE
AVAILABLE**



**CONVENIENT
TO I-264 &
VIRGINIA
BEACH BLVD.**



**CLOSE
PROXIMITY TO
OCEANFRONT
RESORT AREA**



CONTACT INFORMATION

BRETT SAIN, SIOR
 First Vice President
 757 213 4153
 brett.sain@thalhimer.com



Town Center of Virginia Beach
 222 Central Park Avenue, Suite 1500
 Virginia Beach, VA 23462
 thalhimer.com

Independently Owned and Operated / A Member of the Cushman & Wakefield Alliance
 Cushman & Wakefield | Thalhimer © 2026. No warranty or representation, express or implied, is made to the accuracy or completeness of the information contained herein, and same is submitted subject to errors, omissions, change of price, rental or other conditions, withdrawal without notice, and to any special listing conditions imposed by the property owner(s). As applicable, we make no representation as to the condition of the property (or properties) in question.