

For Lease

Mallory Way & S. Roop Street



LOGIC

[Click for a Virtual Tour](#) 

550 Mallory Way
Carson City, NV 89701

Paul Evans
Senior Vice President
775.745.8100
pevans@logicCRE.com
S.0193234

Rylee Buckmaster
Associate
775.217.0297
rbuckmaster@logicCRE.com
S.0200156

Listing Snapshot



\$0.65 PSF
Lease Rate



± 24,000-119,000 SF
Available Square Footage

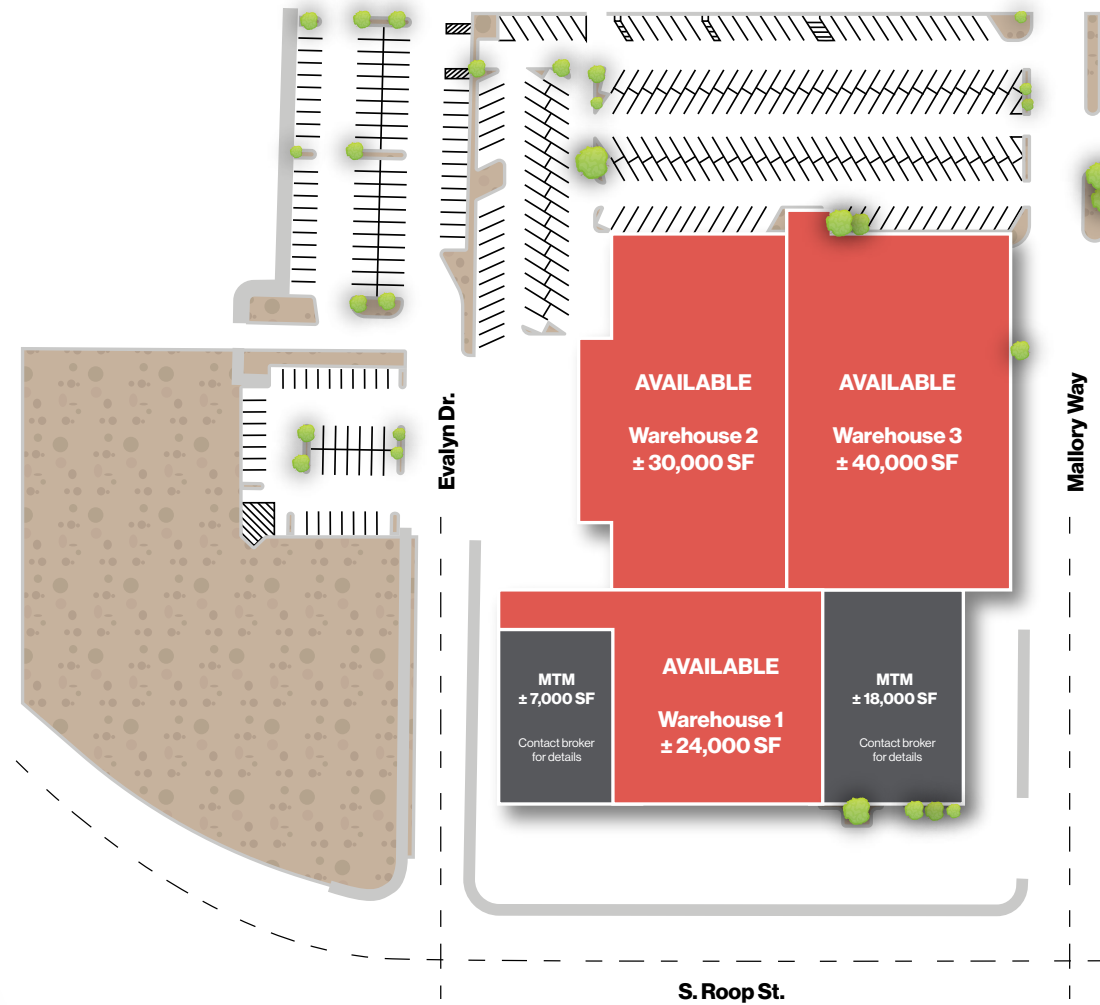


\$0.10 NNN
Estimated Lease Expense

Property Highlights

- Multiple sizes & configurations available
- Newly renovated with new lighting & office build-outs
- Swamp coolers throughout all suites
- Central Carson City location with convenient access to Hwy. 395
- Heavy power throughout (view suite pages for additional details)
- Potential to lease whole building - Contact broker for details





[Click for a Virtual Tour](#)

**Whole building available for lease. Contact broker for details.*



Floor Plan Whole Building

 Available



\$0.65 PSF NNN

Lease Rate



± 119,000 SF

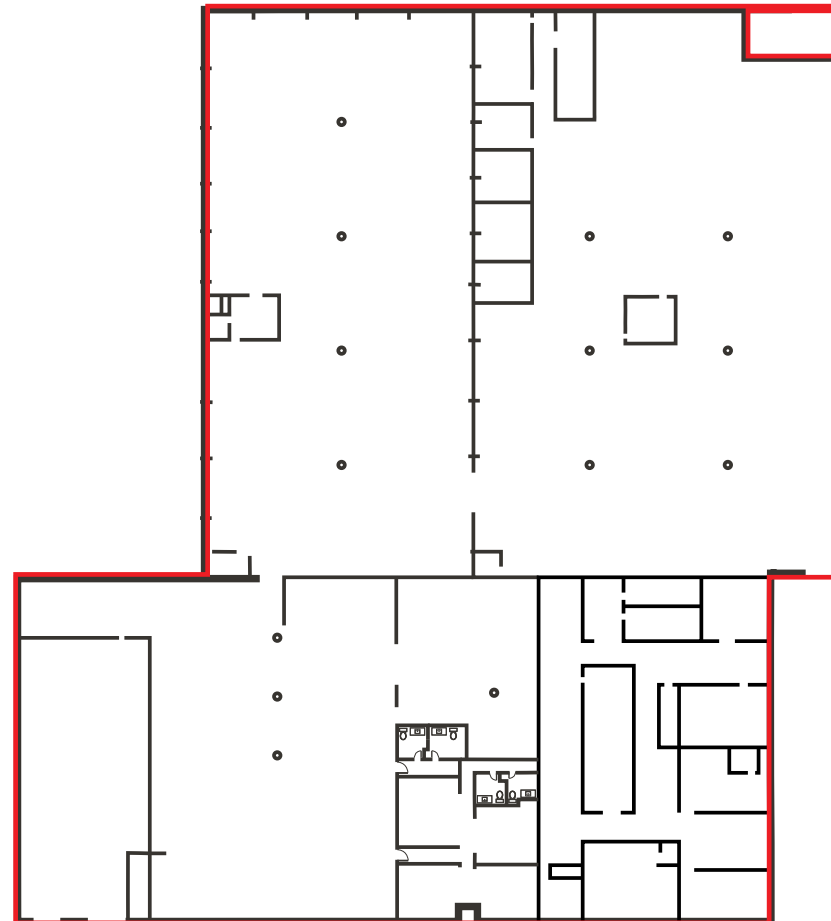
Available Square Footage



\$0.10 PSF NNN

Estimated Lease Expense

- 2,000 amps available for the building -
Tenant to verify power to unit



Floor Plan Warehouse 1

■ NAP

□ Available



\$0.65 PSF NNN

Lease Rate



± 24,000 SF

Available Square Footage



\$0.10 PSF NNN

Estimated Lease Expense

- 15' clear height
- Two (2) 12'x14' grade level doors
- Four (4) private restrooms
- Four (4) private offices



Floor Plan Warehouse 2

■ NAP

□ Available



\$0.65 PSF NNN
Lease Rate

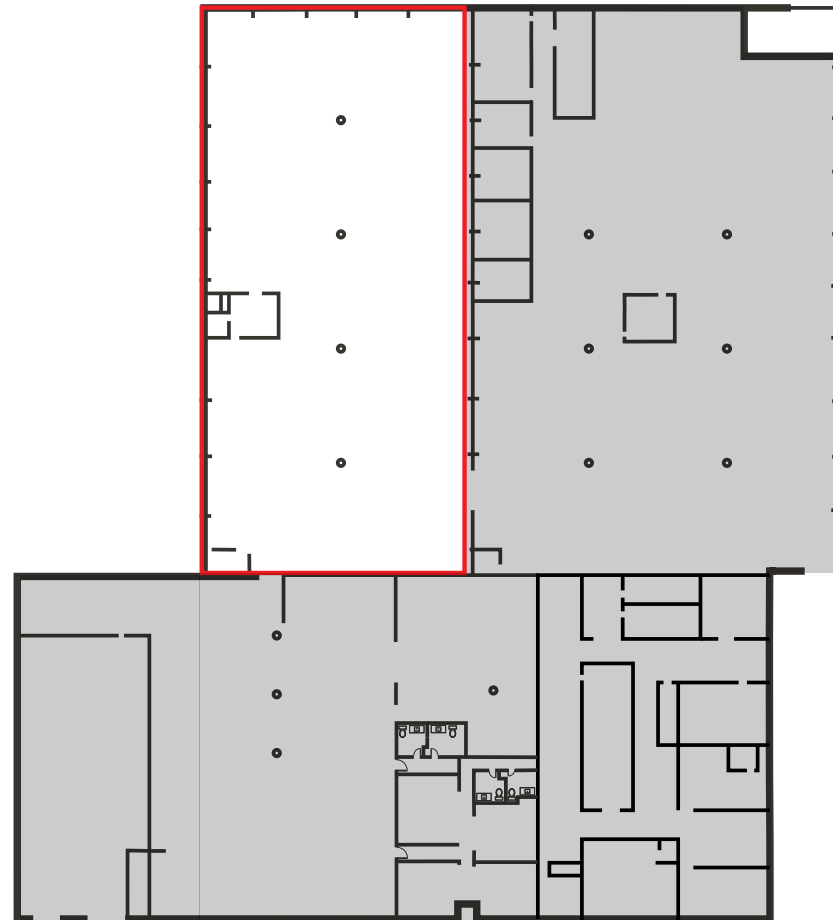


± 30,000 SF
Available Square Footage



\$0.10 PSF NNN
Estimated Lease Expense

- 20' clear height
- Two (2) 10'x12' roll-up doors
- Two (2) 8'x10' roll-up doors
- Two (2) private restrooms
- ± 575 SF office



Floor Plan Warehouse 3

■ NAP

□ Available



\$0.65 PSF NNN

Lease Rate



± 40,000 SF

Available Square Footage



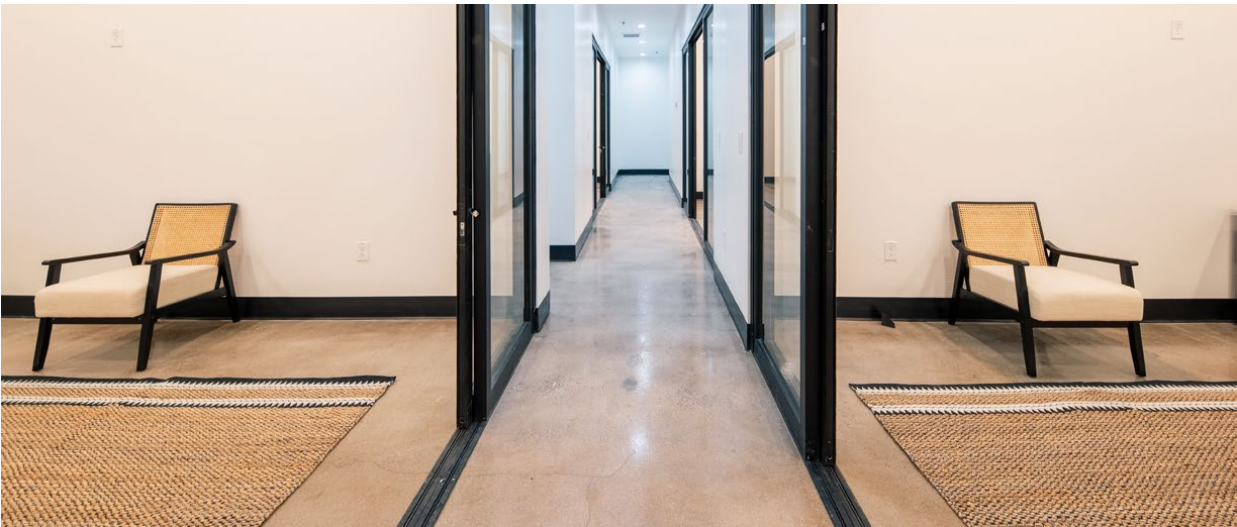
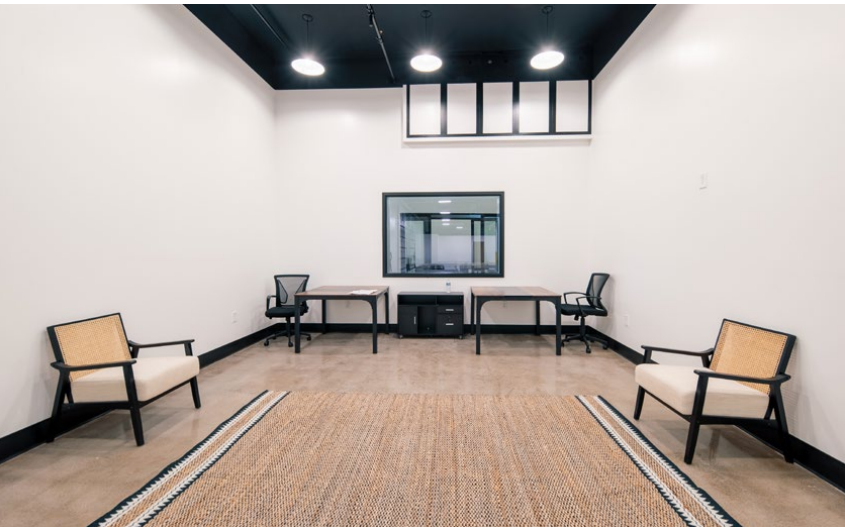
\$0.10 PSF NNN

Estimated Lease Expense

- 19' clear height
- Two (2) 10'x12' roll-up doors
- One (1) internal roll-up door (connects to warehouse 2)
- Two (2) private restrooms
- One (1) kitchen
- One (1) office
- One (1) internal loading dock



Property Photos



Property Photos



LOGIC Commercial Real Estate

Specializing in Brokerage and Receivership Services



Join our email list and
connect with us on LinkedIn

The information herein was obtained from sources deemed reliable; however LOGIC Commercial Real Estate makes no guarantees, warranties or representation as to the completeness or accuracy thereof.

For inquiries please reach out to our team.

Paul Evans

Senior Vice President
775.745.8100
pevans@logicCRE.com
S.0193234

Rylee Buckmaster

Associate
775.217.0297
rbuckmaster@logicCRE.com
S.0200156