



SEATTLE  
TOWER

1218 3RD AVENUE  
SEATTLE, WA 98101

SUITE  
**500**



SPEC SUITE · 3,856 RSF · AVAILABLE NOW





TENANT LOUNGE

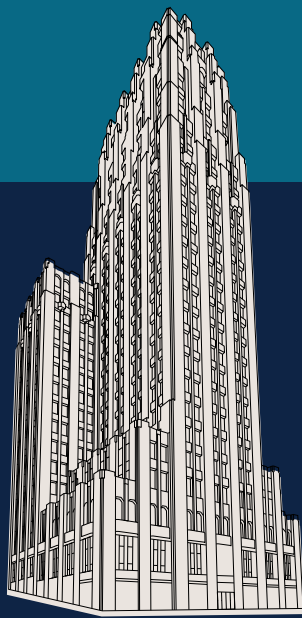
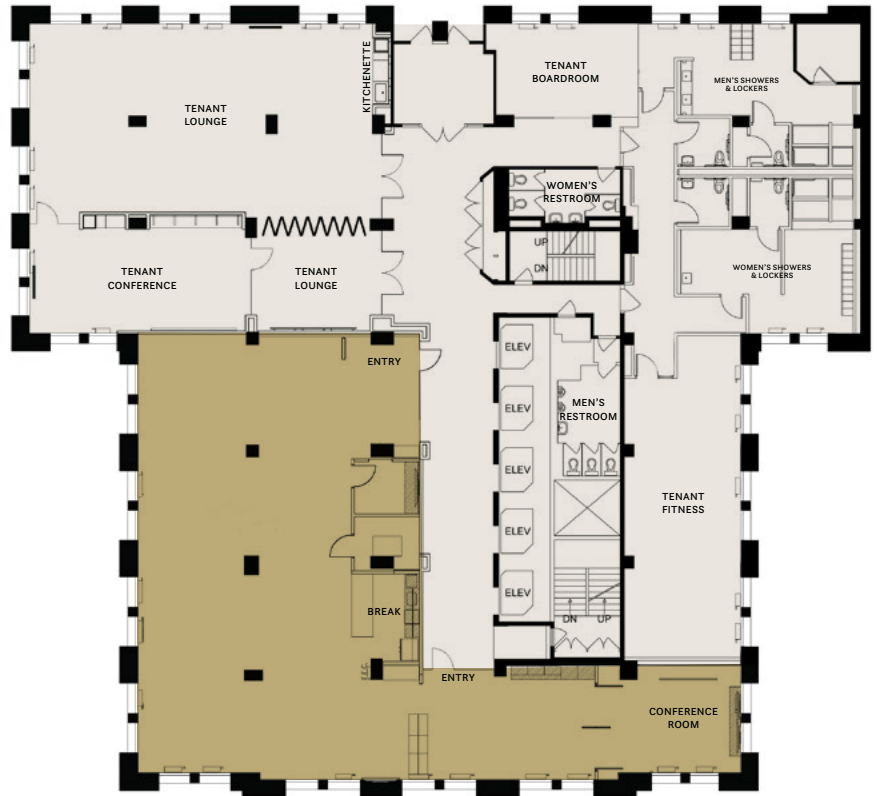


TENANT CONFERENCE ROOM

## Space HIGHLIGHTS

- Move-in ready spec suite
- Open space with conference room and open kitchen concept
- Swingable glass doors at conference room
- Abundant natural light with operable windows
- Direct access to tenant amenities: lounge, conference & meeting rooms, fitness & showers

Suite 500  
3,856 RSF



**TIM JONES**  
+1 206 971 7011  
tim.jones@jll.com

**CLEITA HARVEY**  
+1 206 607 1794  
cleita.harvey@jll.com



**SEATTLE**  
TOWER

Jones Lang LaSalle Brokerage, Inc. Although information has been obtained from sources deemed reliable, neither Owner nor JLL makes any guarantees, warranties or representations, express or implied, as to the completeness or accuracy as to the information contained herein. Any projections, opinions, assumptions or estimates used are for example only. There may be differences between projected and actual results, and those differences may be material. The Property may be withdrawn without notice. Neither Owner nor JLL accepts any liability for any loss or damage suffered by any party resulting from reliance on this information. If the recipient of this information has signed a confidentiality agreement regarding this matter, this information is subject to the terms of that agreement. ©2025 Jones Lang LaSalle IP, Inc. All rights reserved.