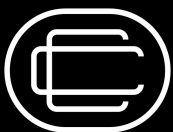
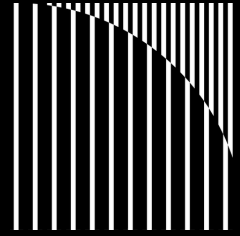


FOR LEASE - 2 RETAIL SPACES

# 1938 Isaacs Ave



**CHRISTINA CHONG**

Managing Broker

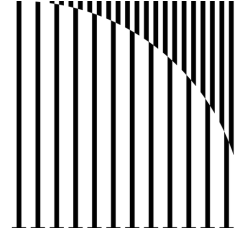
C | 206.551.5909

[christina.chong@compass.com](mailto:christina.chong@compass.com)

**COMPASS**  
COMMERCIAL

FOR LEASE - 2 RETAIL SPACES

# 1938 Isaacs Ave



---

**Address** 1922 + 1930 Isaacs Ave  
Walla Walla, WA 99362

---

**Size: Building Total** 12,685 SF

---

**Suite 1922** 540 SF Rentable  
**Suite 1930** 2638 SF Rentable

---

**Parking** Onsite Parking

---

**Neighboring Tenants** Dollar Tree  
LT Nails  
Rite Aid

---

**Possession** Immediate

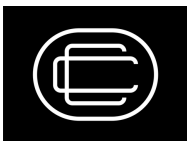
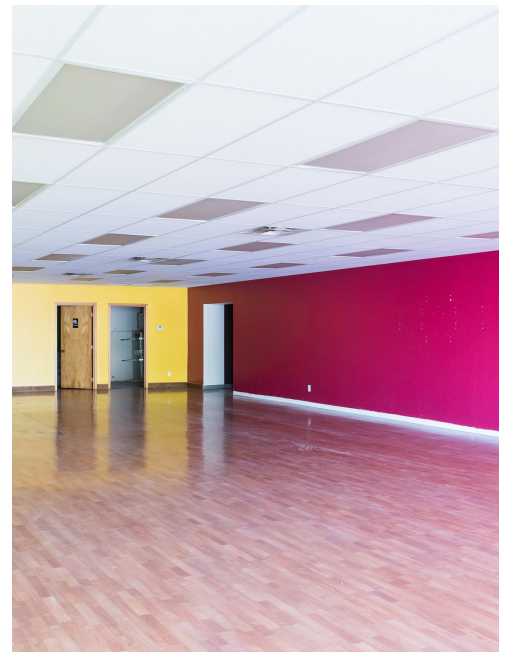
---

**Lease Type** NNN

---

**Price** \$12 to \$14 / PSF

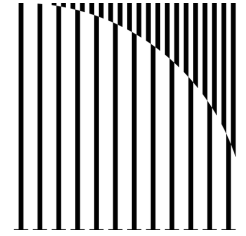
---



**CHRISTINA CHONG**

Managing Broker  
C | 206.551.5909  
christina.chong@compass.com

**COMPASS**  
COMMERCIAL



FOR LEASE - 2 RETAIL SPACES

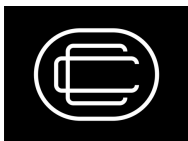
# 1938 Isaacs Ave

Two retail lease spaces (2,638 SF and 540 SF) or combine for an end-cap retail lease space (3,178 SF) available for lease in a Dollar Tree anchored retail strip plaza in Walla Walla. Strong local demographics on high traffic Isaacs Ave. Plenty of parking and excellent visibility.

## Highlights

---

- Inline and End-Cap spaces
- Plenty of Parking and shared parking lot with Rite Aid
- Nearby Whitman College, Walla Walla University and Walla Walla Community College
- Walla Walla Regional Airport
- Pylon Signage
- Surrounded by restaurants, shopping and more



**CHRISTINA CHONG**

Managing Broker

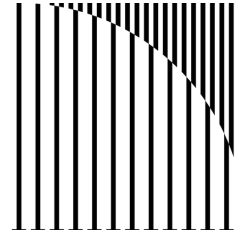
C | 206.551.5909

[christina.chong@compass.com](mailto:christina.chong@compass.com)

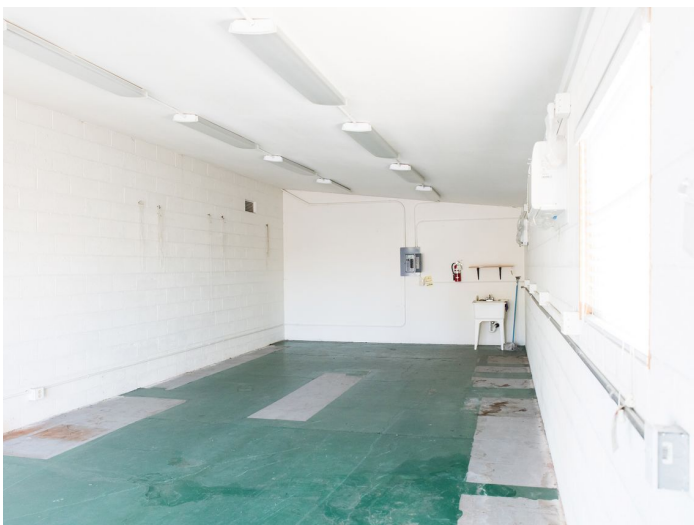
**COMPASS**  
COMMERCIAL

FOR LEASE - 2 RETAIL SPACES

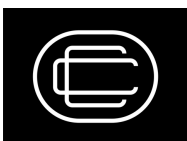
# 1938 Isaacs Ave



**Suite 1922**  
**540 SF**



**Suite 1930**  
**2,638 SF**

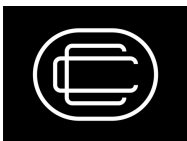
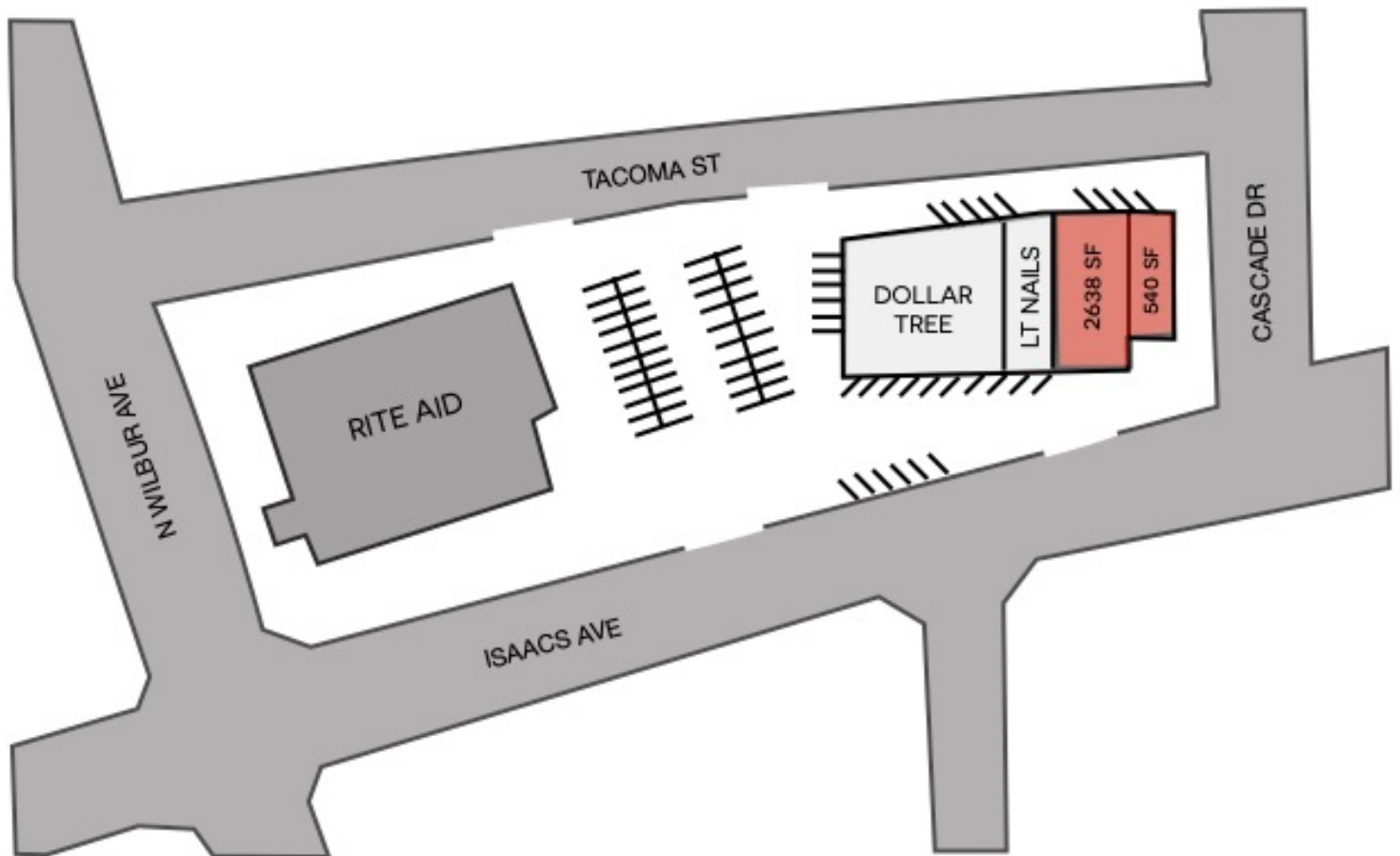
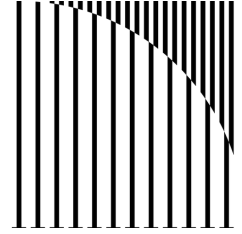


**CHRISTINA CHONG**  
Managing Broker  
C | 206.551.5909  
[christina.chong@compass.com](mailto:christina.chong@compass.com)

**COMPASS**  
**COMMERCIAL**

FOR LEASE - 2 RETAIL SPACES

# 1938 Isaacs Ave



**CHRISTINA CHONG**  
Managing Broker  
C | 206.551.5909  
[christina.chong@compass.com](mailto:christina.chong@compass.com)

**COMPASS**  
COMMERCIAL



**CHRISTINA CHONG**

Managing Broker

C | 206.551.5909

[christina.chong@compass.com](mailto:christina.chong@compass.com)

**COMPASS**  
COMMERCIAL