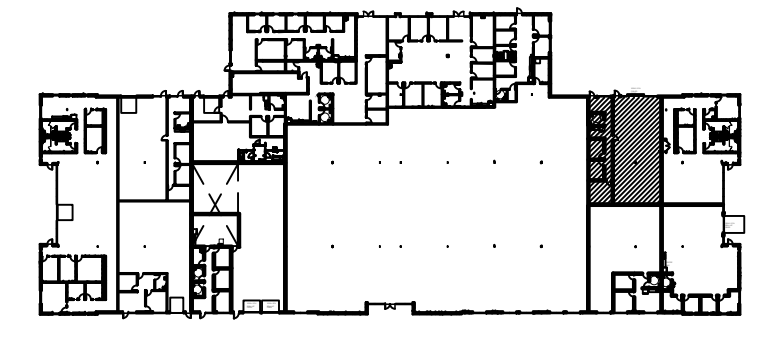
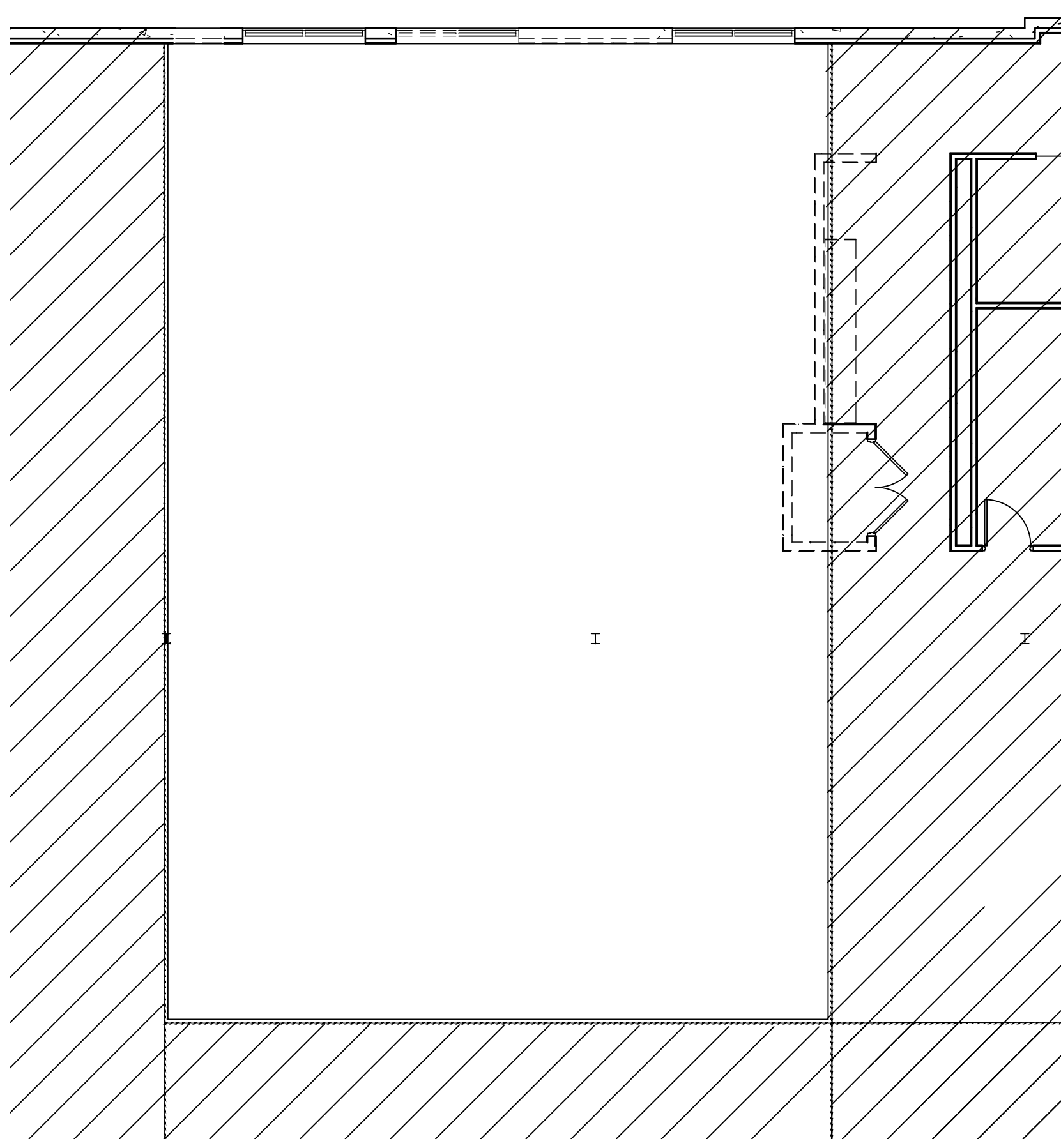


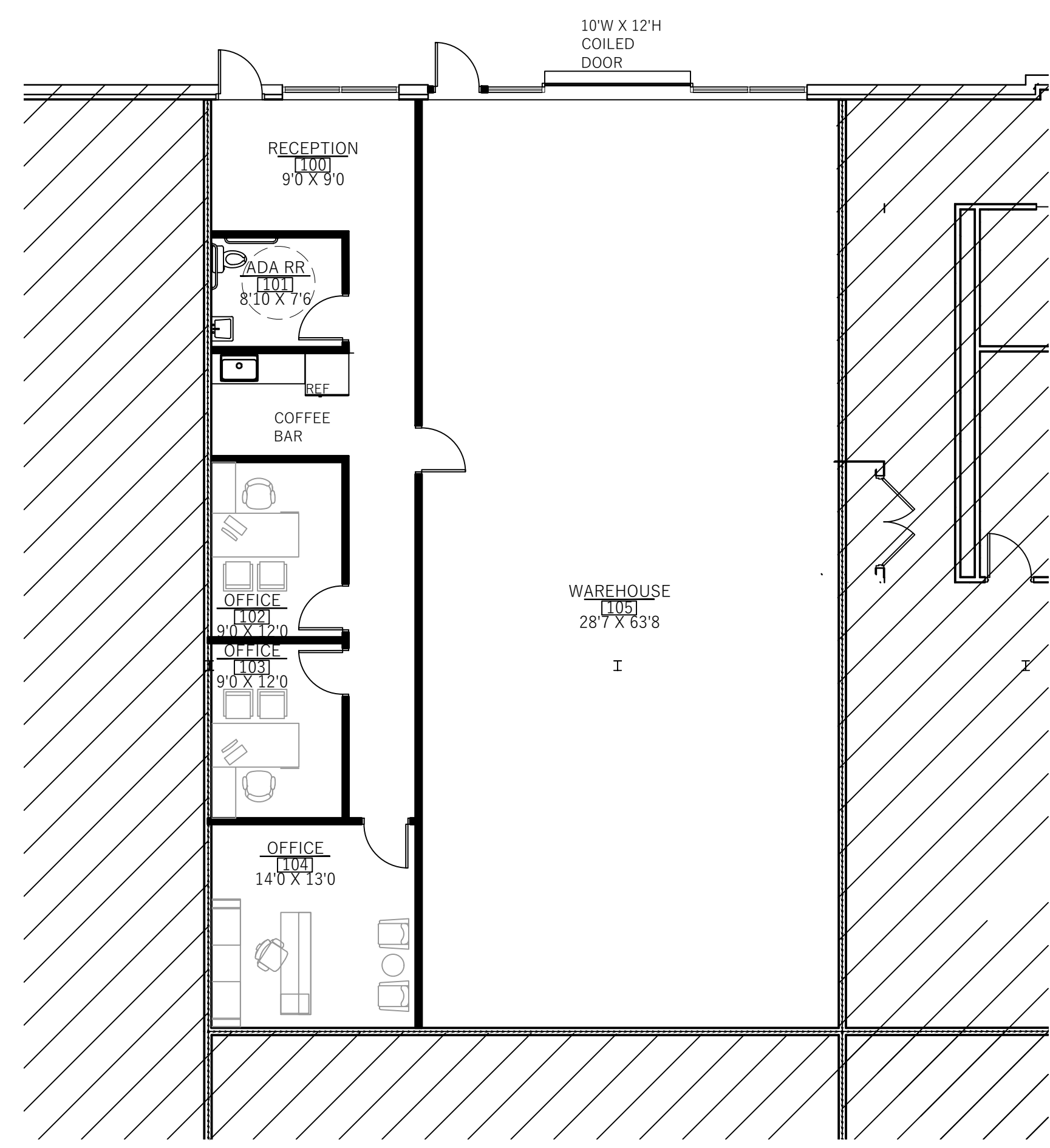
KEY PLAN
 N.T.S



- E1** ——— EXISTING PARTITIONS TO REMAIN
- ER** - - - EXISTING PARTITION TO BE REMOVED
- P1** ——— NEW CEILING HEIGHT PARTITION
- P2** ——— NEW FULL HEIGHT PARTITION (WITH SAB)



DEMOLITION PLAN
 SCALE: 1/8"=1'-0"



PRELIMINARY PLAN
 SCALE: 1/8"=1'-0"

SPEC SUITE C5
 3500 LOOP ROAD, SUITE C5ATLANTA, GA
 30253

DATE	DESCRIPTION
08.07.23	Issued for Review

TENANT REVIEW/
 APPROVAL

SIGNATURE
 DATE

JOB NO: 23378
 DRAWN BY: MP
 USF: 2,741

P-1
 PRELIMINARY
 PLAN

Reproductions as well as incorrect print sizes could cause scaling issues. Contractors are responsible for as build verifications for any material take offs and flooring estimates. Planning Interiors, Inc. shall not be held responsible for drawings being scaled for flooring or material estimates.

Drawings, specifications and other documents including those in electronic form prepared by Planning Interiors, Inc. and their consultants are instruments of service for use solely with respect to the contracted work for this project. Planning Interiors, Inc. and their consultants shall be deemed the authors and owners of their respective instruments of service and shall retain all copyright, statutory and other reserved rights, including copyright.