



**WASHINGTON
ONE THOUSAND**

*Spec Suite
Floor Plans*

Floor 3

± 33,904 SF



● *Suite 320*
± 10,143 SF

● *Suite 300*
± 15,947 SF

● *Suite 350*
± 7,814 SF



Floor 3

± 33,904 SF

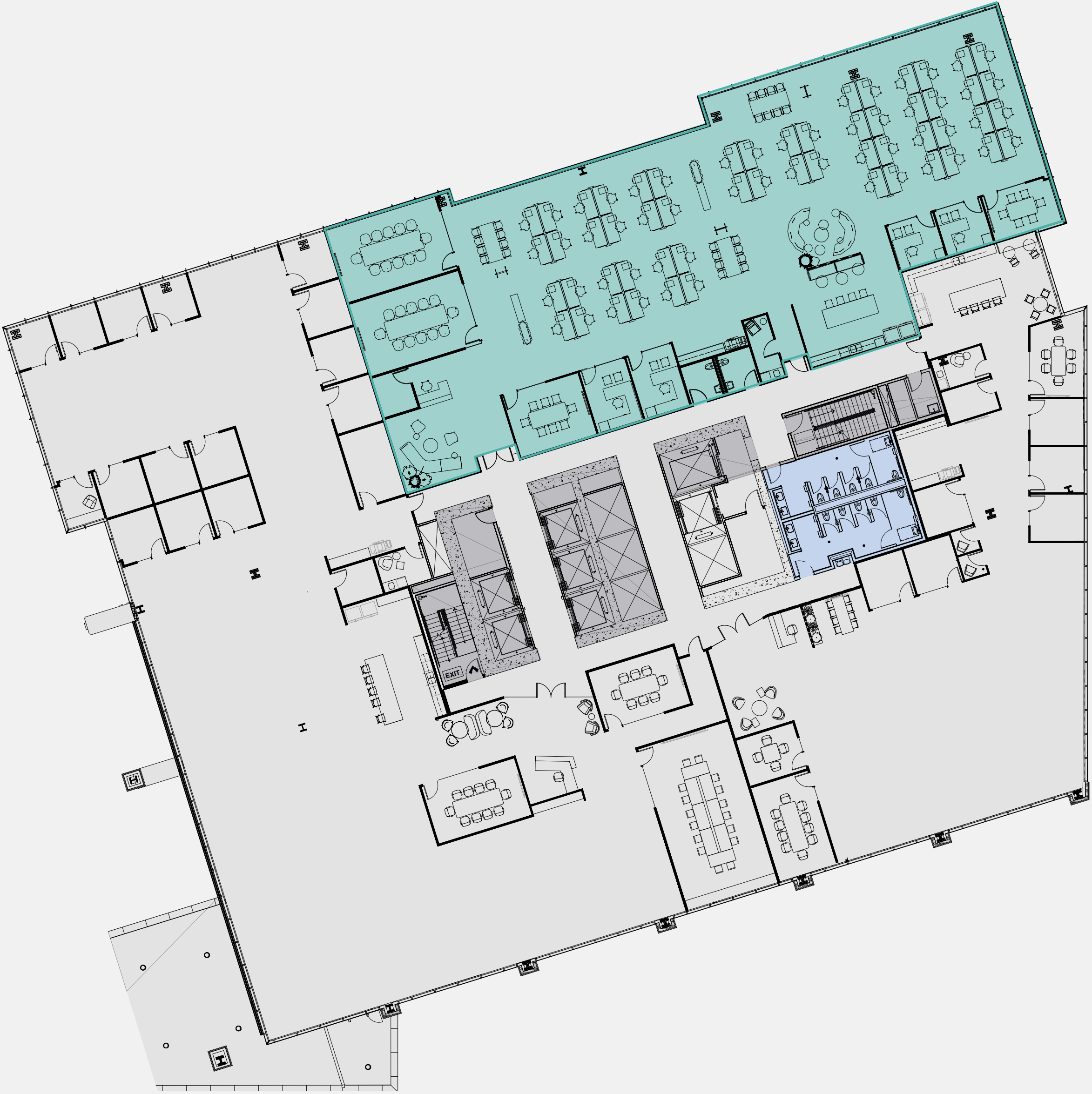


● *Suite 320*
± 10,143 SF

● *Suite 300*
± 15,947 SF

● *Suite 350*
± 7,814 SF

Floor 3
Suite 320



PROGRAM:

| | |
|-------------------------|-----------------|
| RECEPTION AREA | 1 |
| LARGE CONFERENCE ROOM | 0 |
| MEDIUM CONFERENCE ROOM | 2 |
| SMALL CONFERENCE ROOM | 2 |
| MOTHER'S ROOM | 1 |
| PRIVATE OFFICE | 4 |
| BREAK ROOM | 1 |
| PRINT STATION | 1 |
| SERVER/STORAGE ROOM | 1 |
| OPEN OFFICE BENCHING | 56 |
| COLLABORATION/TEAM AREA | 4 |
| RENTAL SF | ± 10,143 |
| TOTAL HEADCOUNT | 61 |
| RSF/PERSON | 166 |

Floor 3
Suite 300



PROGRAM:

| | |
|-------------------------|-----------------|
| RECEPTION AREA | 1 |
| LARGE CONFERENCE ROOM | 1 |
| MEDIUM CONFERENCE ROOM | 2 |
| SMALL CONFERENCE ROOM | 4 |
| MOTHER'S ROOM | 1 |
| PRIVATE OFFICE | 10 |
| BREAK ROOM | 1 |
| PRINT STATION | 2 |
| SERVER/STORAGE ROOM | 1 |
| OPEN OFFICE BENCHING | 74 |
| COLLABORATION/TEAM AREA | 12 |
| RENTAL SF | ± 15,947 |
| TOTAL HEADCOUNT | 85 |
| RSF/PERSON | 188 |

Floor 3
Suite 350



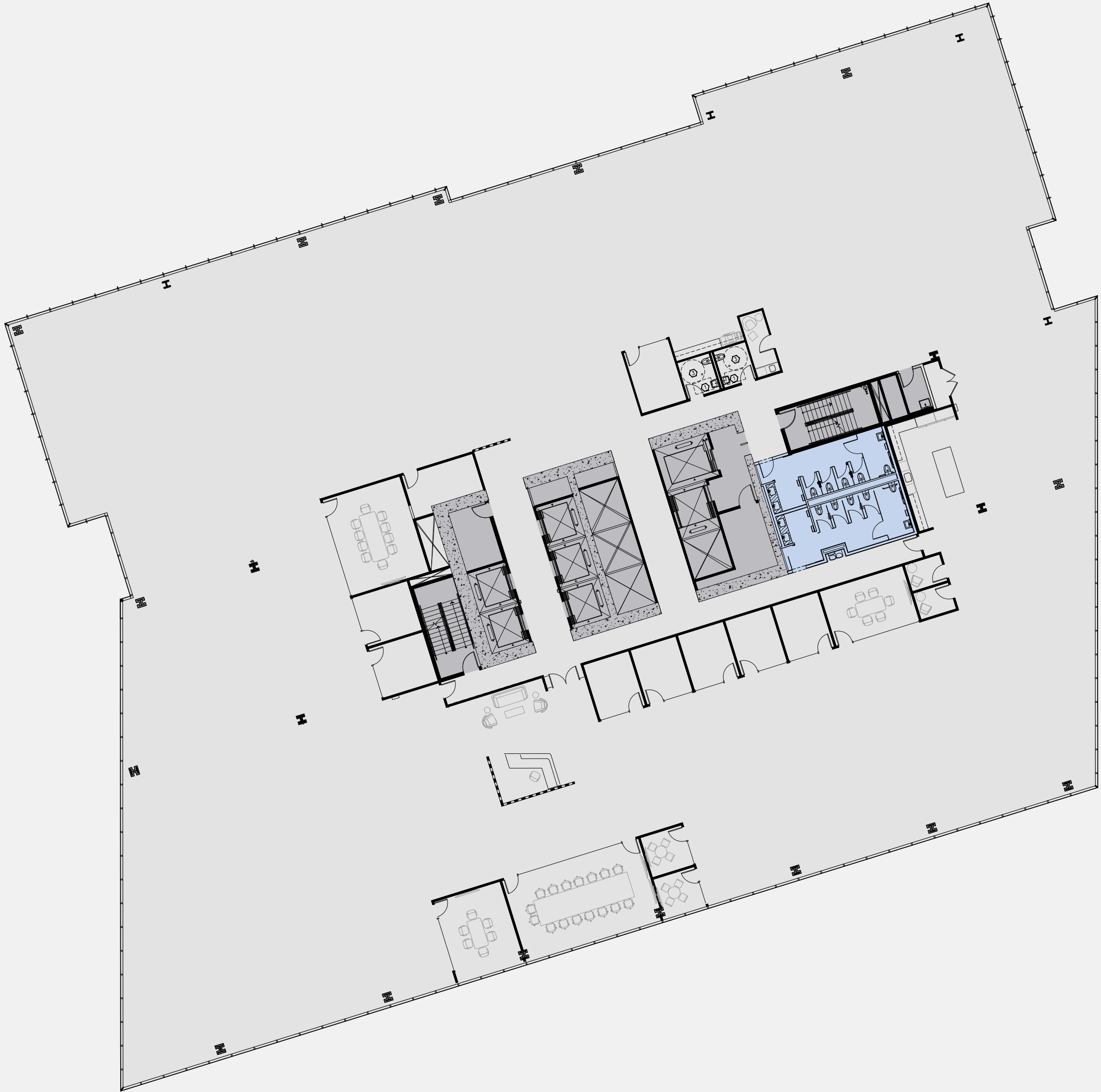
PROGRAM:

| | |
|-------------------------|----------------|
| RECEPTION AREA | 1 |
| LARGE CONFERENCE ROOM | 0 |
| MEDIUM CONFERENCE ROOM | 1 |
| SMALL CONFERENCE ROOM | 2 |
| MOTHER'S ROOM | 1 |
| PRIVATE OFFICE | 6 |
| BREAK ROOM | 1 |
| PRINT STATION | 1 |
| SERVER/STORAGE ROOM | 1 |
| OPEN OFFICE - 8' x 8' | 24 |
| COLLABORATION/TEAM AREA | 3 |
| RENTAL SF | ± 7,814 |
| TOTAL HEADCOUNT | 31 |
| RSF/PERSON | 252 |

Floor 4
± 36,873 SF



Floor 4



PROGRAM:

| | |
|-------------------------|-----------------|
| RECEPTION AREA | 1 |
| LARGE CONFERENCE ROOM | 1 |
| MEDIUM CONFERENCE ROOM | 3 |
| SMALL CONFERENCE ROOM | 4 |
| MOTHER'S ROOM | 1 |
| PRIVATE OFFICE | 8 |
| BREAK ROOM | 1 |
| PRINT STATION | 1 |
| SERVER/STORAGE ROOM | 1 |
| OPEN OFFICE BENCHING | TBD |
| COLLABORATION/TEAM AREA | TBD |
| RENTAL SF | ± 36,873 |
| TOTAL HEADCOUNT | TBD |
| RSF/PERSON | TBD |



Washington1000HPP.com



Lloyd Low
206 607 1796
lloyd.low@jll.com

Jim Allison
206 607 1787
jim.allison@jll.com

Lisa Stewart
206 607 1786
lisa.stewart@jll.com

Joe Gowan
206 607 1738
joe.gowan@jll.com

Charlotte Evans
206 607 1720
charlotte.evans@jll.com

*ALL RENDERINGS AND FLOOR PLANS SUBJECT TO CHANGE