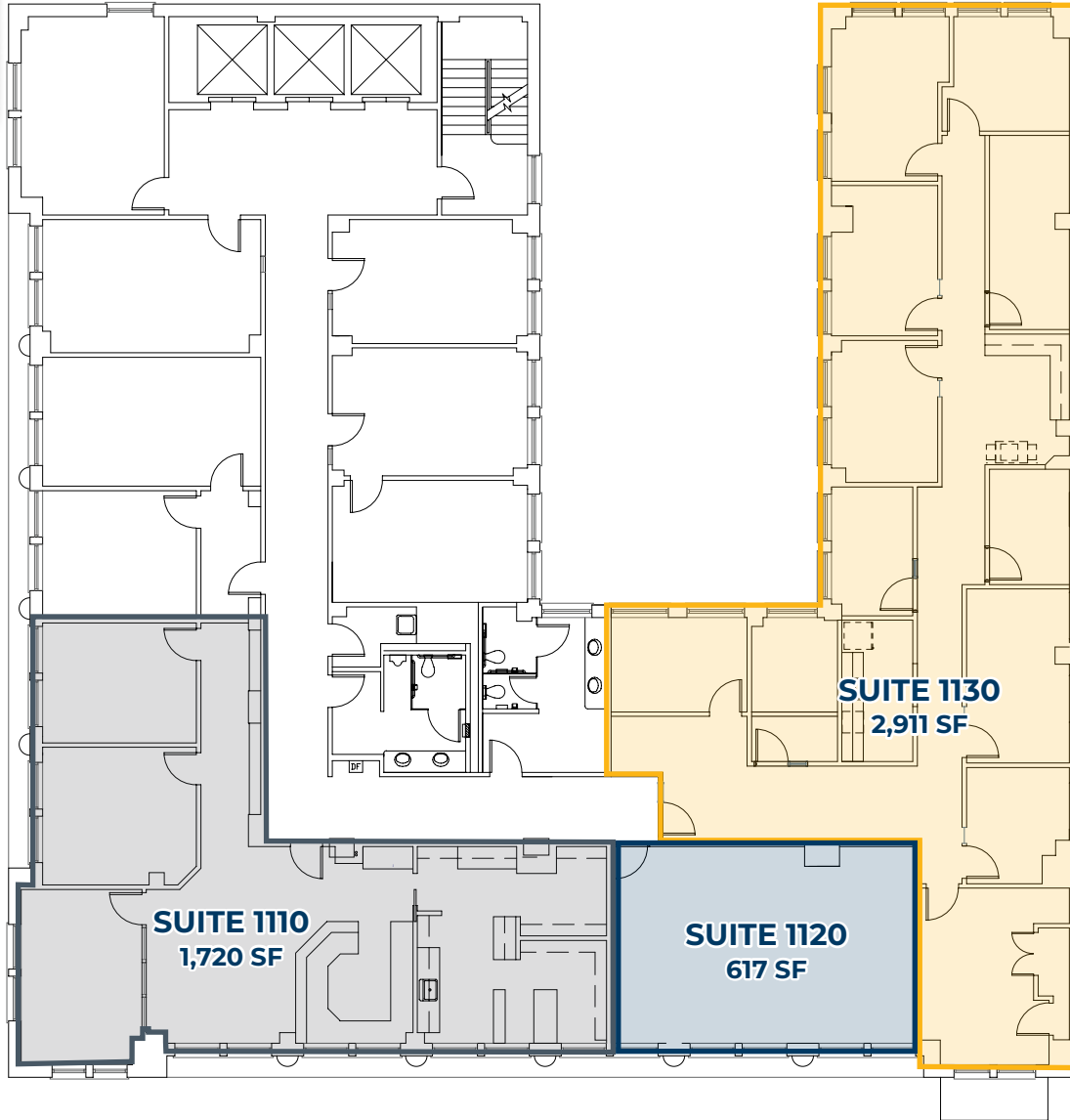




FLOOR PLAN



LEASE INFORMATION	
Building	The Cascade Building
Address	520 SW 6th Ave, Portland, OR 97204
Floor	11th
Suites	1110, 1120, 1130
Total SF	617 - 2,911 RSF

MCCOY DOERRIE, SIOR
Senior Vice President
503-523-7751
mccoy@capacitycommercial.com

JEFF FALCONER, SIOR
Principal
503-542-4346
jeff@capacitycommercial.com

GABRIEL BEHRMANN
Associate Broker
971-237-2458
gabriel@capacitycommercial.com

