

Oxford Companies
734.665.6500
oxfordcompanies.com



Integrated
Real Estate
Services



Office Building For Lease

The 777 Building

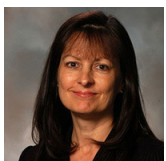
777 E Eisenhower Parkway, Suite 910

Ann Arbor, MI 48104

995 SF

\$31.00 SF/yr (MG)

Available 3/1/2026



Contact Karen O'Neil for
more information or to
schedule a tour.

Office: 734.665.6500
Cell: 734.323.4263
koneil@oxfordcompanies.com

The 777 Building
777 E Eisenhower Parkway, Suite 910
Ann Arbor, MI 48104



Integrated
Real Estate
Services



OFFERING SUMMARY

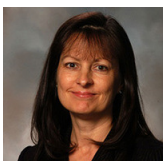
Available:	3/1/2026
Lease Rate:	\$31.00/SF (MG)
Available SF:	995 SF
Year Built:	1975
Renovated:	2000
Zoning:	TC1

PROPERTY OVERVIEW

The 777 Building is one of the area's most iconic commercial properties, and businesses now have the rare opportunity to lease Ann Arbor office space in the city's only Southside high-rise. 777's tenant roster includes national tech, finance, and professional services corporations. The entrance and lobby were renovated in 2022 and feature Class A finishes throughout. An on-site coffee shop provides tenants with exceptional dining options while also bringing in a steady stream of visitors. Several other dining and retail options are easily within walking distance. Visibility at 777 is among the highest in Ann Arbor, thanks to its 10 story, 300,000 SF footprint and fantastic location at the corner of E. Eisenhower Parkway and S. State Street. Secluded, paved walkways surround the property and are maintained year-round.

PROPERTY HIGHLIGHTS

- Suite offers some of the best views of southside Ann Arbor, with a mix of individual offices and collaborative space
- Great on-site amenities including Sweetwaters coffee shop, Shawarma Shop, Kiosk marketplace, and drop-off/pick-up dry cleaning services
- On-site property management with 24/7 on-call emergency maintenance
- Abundant surface parking and available covered parking
- Multiple fiber providers



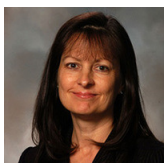
Contact Karen O'Neil for more information or to schedule a tour.

Office: 734.665.6500
Cell: 734.323.4263
koneil@oxfordcompanies.com

The 777 Building
777 E Eisenhower Parkway, Suite 910
Ann Arbor, MI 48104



Integrated
Real Estate
Services



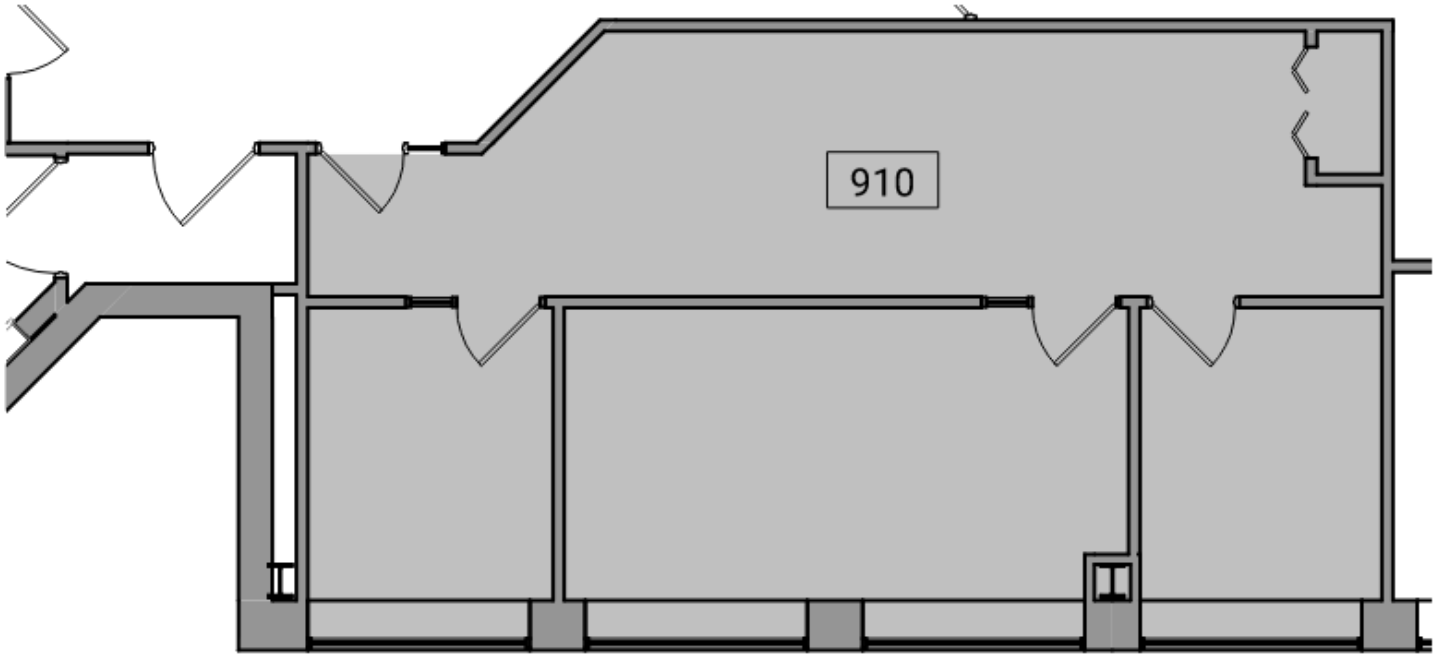
Contact Karen O'Neil for
more information or to
schedule a tour.

Office: 734.665.6500
Cell: 734.323.4263
koneil@oxfordcompanies.com

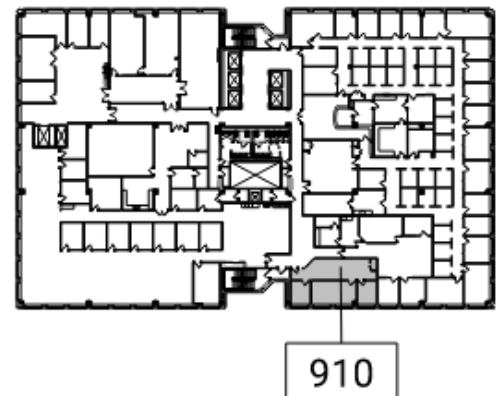
The 777 Building
777 E Eisenhower Parkway, Suite 910
Ann Arbor, MI 48104



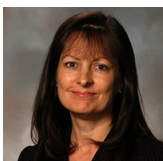
Integrated
Real Estate
Services



N
2 Suite 910 - Partial Level 9 Existing Floor Plan
910 4' 8' 16' 1/8" = 1'-0"



N
1 Key Plan - Level 9
910 100' 200' 1" = 100'-0"



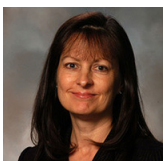
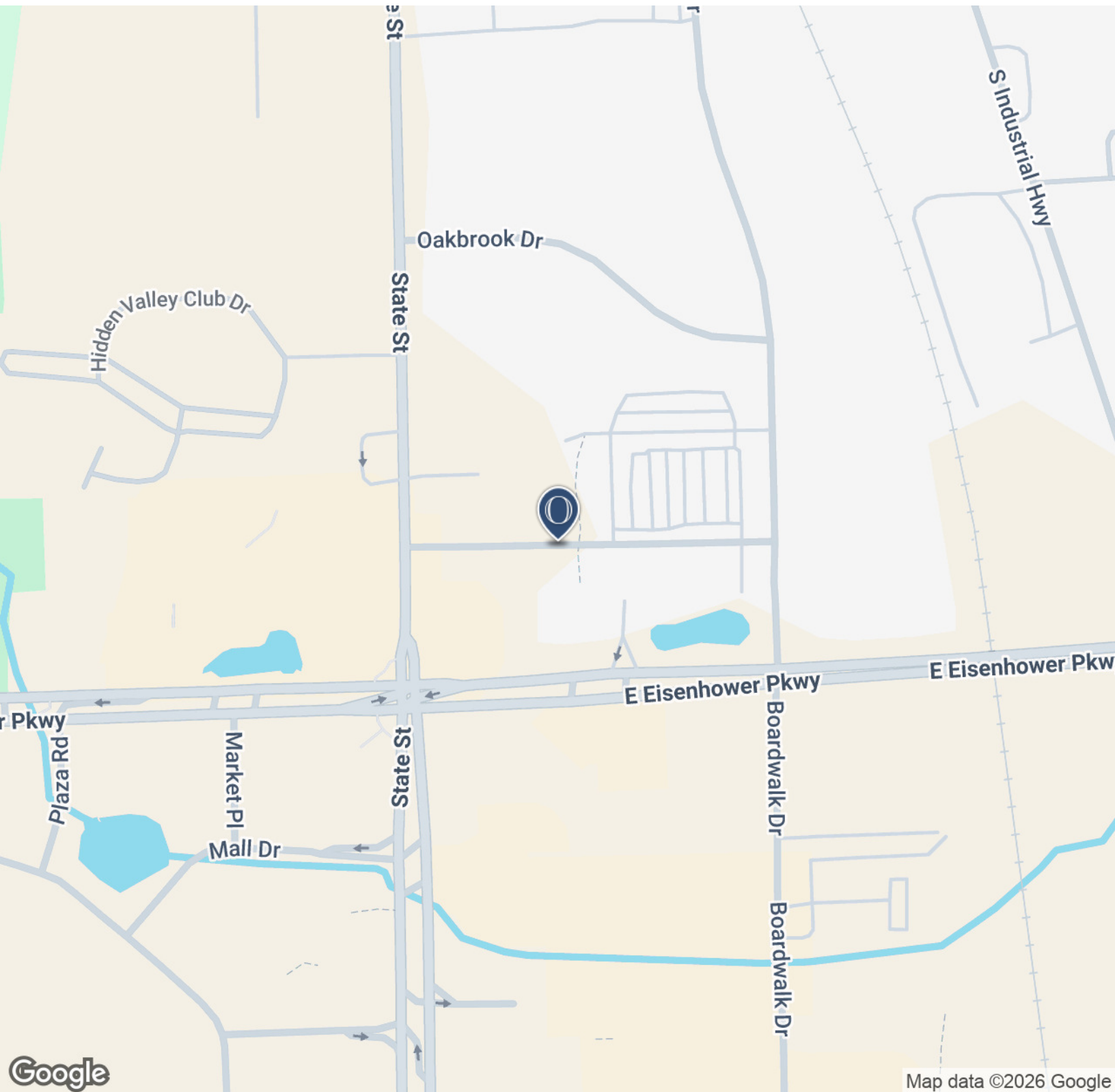
Contact Karen O'Neil for more information or to schedule a tour.

Office: 734.665.6500
Cell: 734.323.4263
koneil@oxfordcompanies.com

The 777 Building
777 E Eisenhower Parkway, Suite 910
Ann Arbor, MI 48104



Integrated
Real Estate
Services



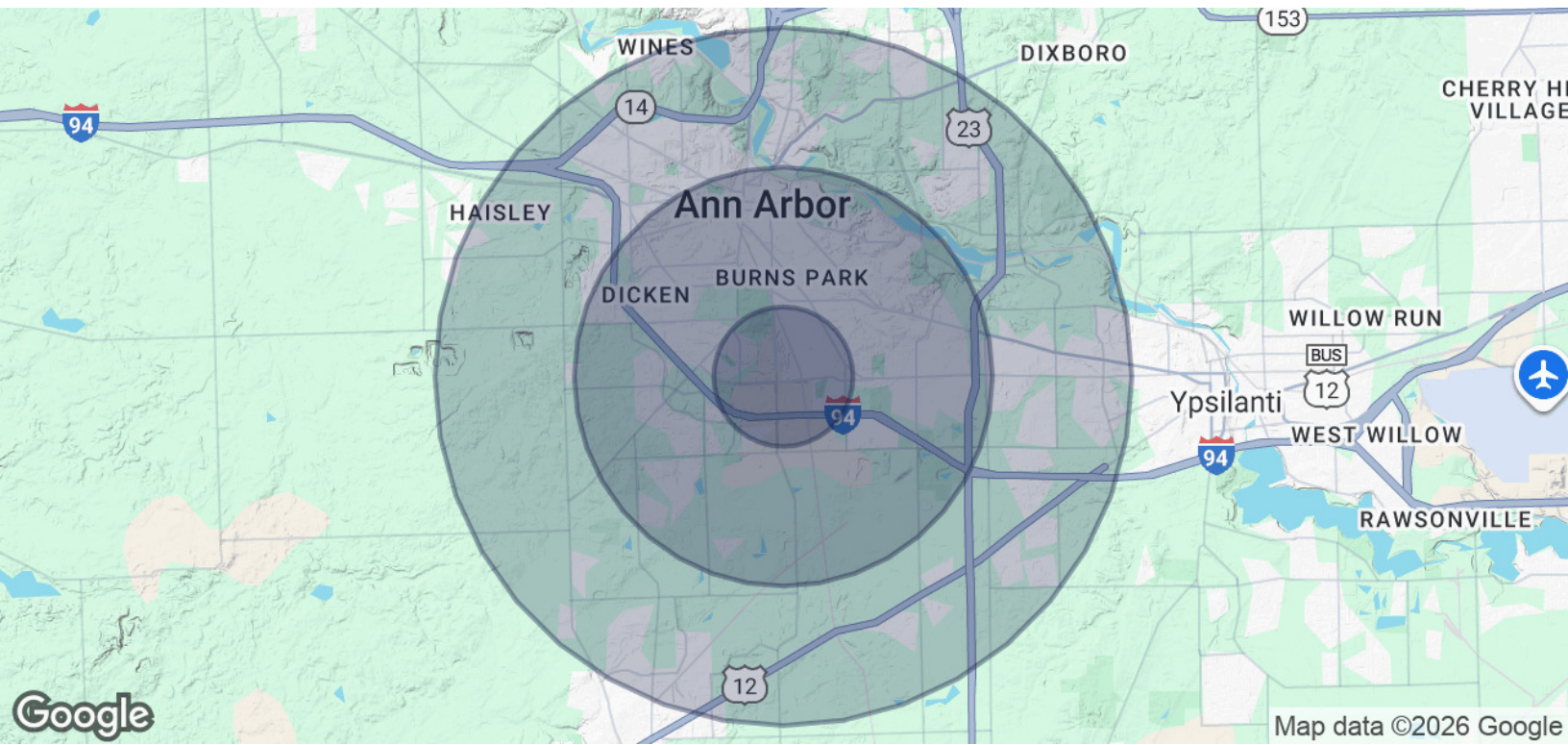
Contact Karen O'Neil for
more information or to
schedule a tour.

Office: 734.665.6500
Cell: 734.323.4263
koneil@oxfordcompanies.com

The 777 Building
 777 E Eisenhower Parkway, Suite 910
 Ann Arbor, MI 48104

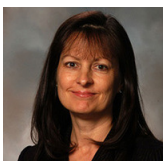


Integrated
 Real Estate
 Services



POPULATION	1 MILE	3 MILES	5 MILES
Total Population	9,841	100,415	188,752
Average Age	32.0	30.9	32.7
Average Age (Male)	32.2	30.8	32.4
Average Age (Female)	31.7	31.0	33.1
HOUSEHOLDS & INCOME	1 MILE	3 MILES	5 MILES
Total Households	4,831	37,864	74,075
# of Persons per HH	2.0	2.7	2.5
Average HH Income	\$59,810	\$76,540	\$79,336
Average House Value	\$117,606	\$329,758	\$323,070

2020 American Community Survey (ACS)



Contact Karen O'Neil for more information or to schedule a tour.

Office: 734.665.6500
 Cell: 734.323.4263
 koneil@oxfordcompanies.com