



COMMERCIAL

Commercial Space Available for Sale

HIGHLIGHTS

- Price: \$429,000
- SQFT: 3,340
- SQFT Lot: 25,265
- Price per SQFT: \$128.44
- Zoning: Community Commercial
- Property Type: Office/Retail
- Listing ID: SN26146033
- Parcel #: 051163038000
- County: Butte



**7671 Skyway
Paraisé, CA 95969**

www.selectcommercialgroup.com

**CENTURY 21
COMMERCIAL**
Select Real Estate

The award-winning Select Group of Real Estate Companies provide exceptional customer service at the local, regional, national, and international level, our experienced commercial real estate agents are here to discuss your real estate growth.

©2024 Century 21 Real Estate LLC. CENTURY 21® and CENTURY 21 Commercial® are registered trademarks owned by Century 21 Real Estate LLC. Each office is independently owned and operated.



COMMERCIAL

7671 Skyway



Situated on 0.58± acres with CC zoning, this versatile investment offers two addresses, separate power, and outstanding potential for owner-users or investors. The updated front office/retail building of 1340+/- Sq ft features spacious showroom areas, reception, private offices, conference or display space, breakroom, restroom, storage, and bonus area, making it ideal for a wide range of business uses. The fully fenced rear portion includes a modern Steel I-beam building with two 1,000+/- sq. ft. units, one a warehouse with a roll-up and the other a showroom/work area. Included is an ADA restroom and a 900+/- sq. ft. covered, heated patio. The insulated, Title 24-compliant structure includes skylight panels, a 50-amp welder outlet, and a 30-amp RV plug, offering exceptional flexibility. With excellent traffic exposure and zoning that allows a variety of commercial uses, including retail, office, and industrial-related businesses, this property is ready for your next venture. Buyers should verify permitted uses with the Town of Paradise.



www.selectcommercialgroup.com

**CENTURY 21
COMMERCIAL**

Select Real Estate

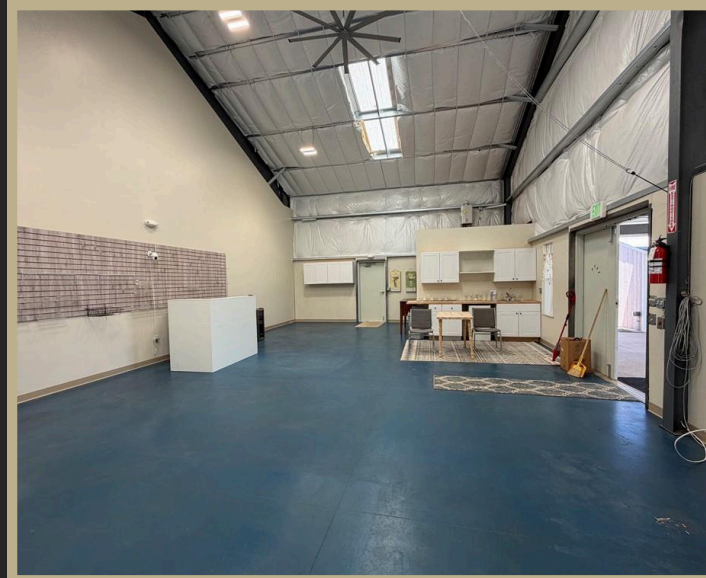
The award-winning Select Group of Real Estate Companies provide exceptional customer service at the local, regional, national, and international level, our experienced commercial real estate agents are here to discuss your real estate growth.

©2024 Century 21 Real Estate LLC. CENTURY 21® and CENTURY 21 Commercial® are registered trademarks owned by Century 21 Real Estate LLC. Each office is independently owned and operated.



COMMERCIAL®

Interior Photos



www.selectcommercialgroup.com

**CENTURY 21
COMMERCIAL®**

Select Real Estate

The award-winning Select Group of Real Estate Companies provide exceptional customer service at the local, regional, national, and international level, our experienced commercial real estate agents are here to discuss your real estate growth.

©2024 Century 21 Real Estate LLC. CENTURY 21® and CENTURY 21 Commercial® are registered trademarks owned by Century 21 Real Estate LLC. Each office is independently owned and operated.



COMMERCIAL

Exterior Photos



www.selectcommercialgroup.com

**CENTURY 21
COMMERCIAL**

Select Real Estate

The award-winning Select Group of Real Estate Companies provide exceptional customer service at the local, regional, national, and international level, our experienced commercial real estate agents are here to discuss your real estate growth.

©2024 Century 21 Real Estate LLC. CENTURY 21® and CENTURY 21 Commercial® are registered trademarks owned by Century 21 Real Estate LLC. Each office is independently owned and operated.



COMMERCIAL

City Overview

City of Paradise

Nestled in the scenic Sierra Nevada foothills, Paradise, California combines small-town charm, natural beauty, and strong economic potential. Located just 90 miles north of Sacramento and minutes from Chico, the town occupies a prime position for business growth and long-term development.

Following extensive rebuilding after the 2018 Camp Fire, Paradise has emerged as a model of resilience, supported by modernized infrastructure, streamlined permitting, and substantial state and federal investment. With affordable land, a growing population, and pro-business leadership, Paradise now offers exceptional opportunities for retail, office, and mixed-use development. Businesses benefit from strong local loyalty, limited regional competition, and a community eager to reinvest in its future.



www.selectcommercialgroup.com

**CENTURY 21
COMMERCIAL**

Select Real Estate

The award-winning Select Group of Real Estate Companies provide exceptional customer service at the local, regional, national, and international level, our experienced commercial real estate agents are here to discuss your real estate growth.

©2024 Century 21 Real Estate LLC. CENTURY 21® and CENTURY 21 Commercial® are registered trademarks owned by Century 21 Real Estate LLC. Each office is independently owned and operated.



COMMERCIAL[®]

For More Information
Contact Me:



Kimberly Shaffer

DRE # 01415693

530-680-7685

Kimsellschico@gmail.com

1101 El Monte Ave, Chico CA 95928

www.selectcommercialgroup.com

**CENTURY 21
COMMERCIAL[®]**

Select Real Estate

The award-winning Select Group of Real Estate Companies provide exceptional customer service at the local, regional, national, and international level, our experienced commercial real estate agents are here to discuss your real estate growth.

©2024 Century 21 Real Estate LLC. CENTURY 21[®] and CENTURY 21 Commercial[®] are registered trademarks owned by Century 21 Real Estate LLC. Each office is independently owned and operated.