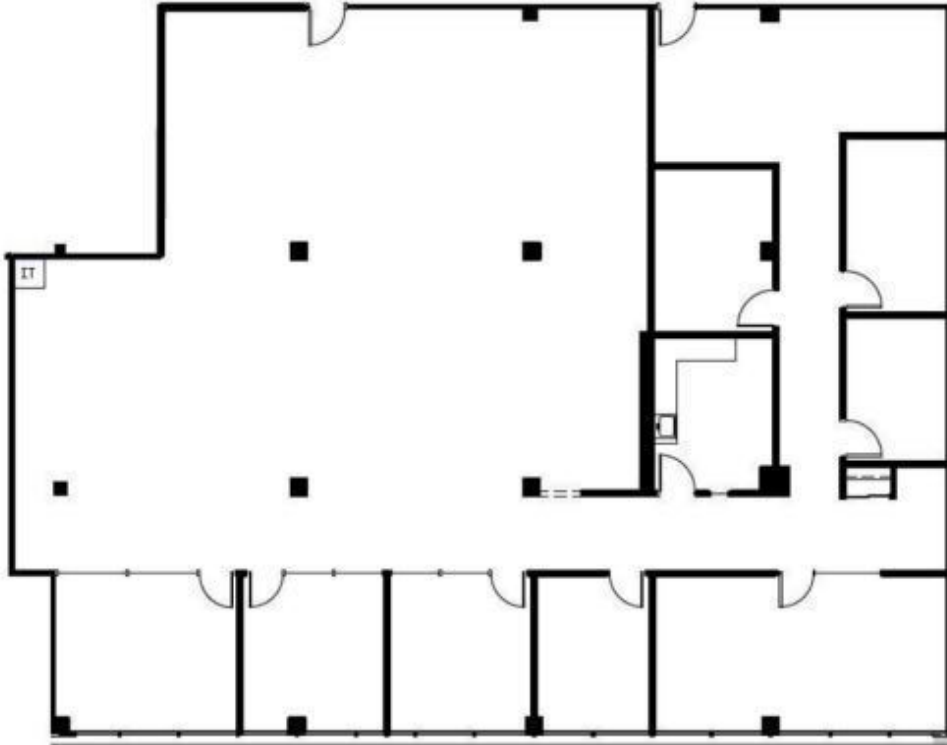


SUITE 250 | 5,470 SF

1771 W DIEHL RD | NAPERVILLE, IL



SPACE NOTES

- Generous Build-Out Allowance
- Existing Perimeter Private Offices
- Built out Kitchen



RYAN MOEN
630.480.6346
RMoen@VersaRES.com

JOHN MILLNER
630.480.6342
JMillner@VersaRES.com

1 MID AMERICA PLAZA, 3RD FLOOR
OAKBROOK TERRACE, IL 60181
630.480.6413

VERSA
REAL ESTATE SERVICES