

820 DAVIS

Office Opportunities in Evanston Illinois



vibrant enigmatic flexible in

Offering an energetic environment in the heart of Evanston, 820 Davis delivers style, ambiance, amenities and flexibility for modern employers and employees.



Adjacent to Davis Street Metra Station



Walkable! Retail, restaurants, lakefront and more



New lobby, entrance, and bike room



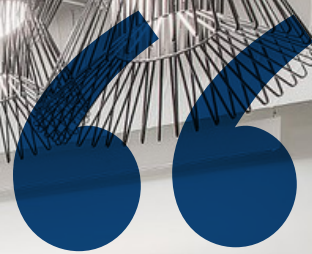
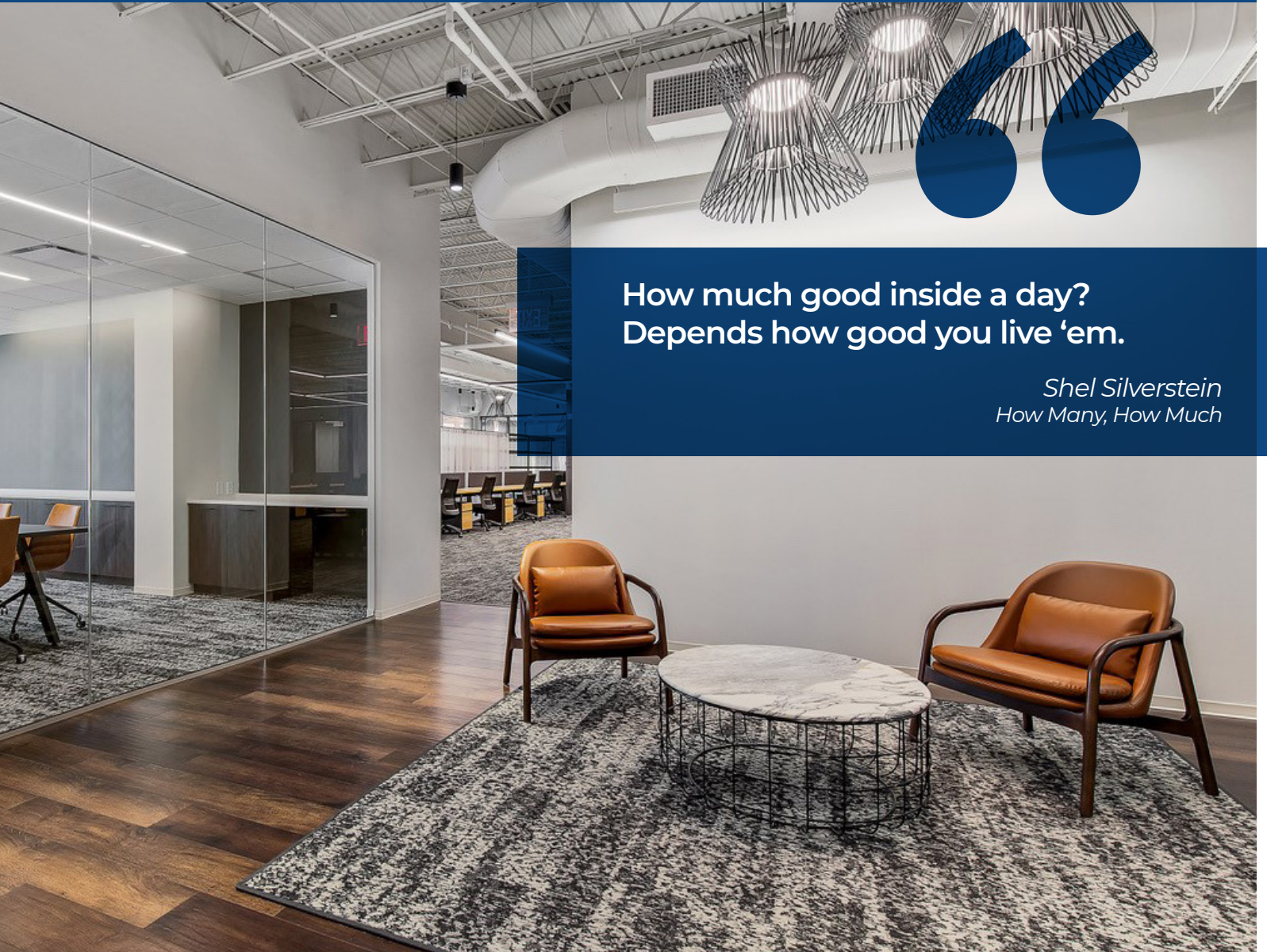
Adjacent covered parking

Opportunities from 200 to 10,329 square feet.
MOVE-IN READY: 10k SF SUITE READY TO GO!



Suite 200

Inspirational unique 820 davis



How much good inside a day?
Depends how good you live 'em.

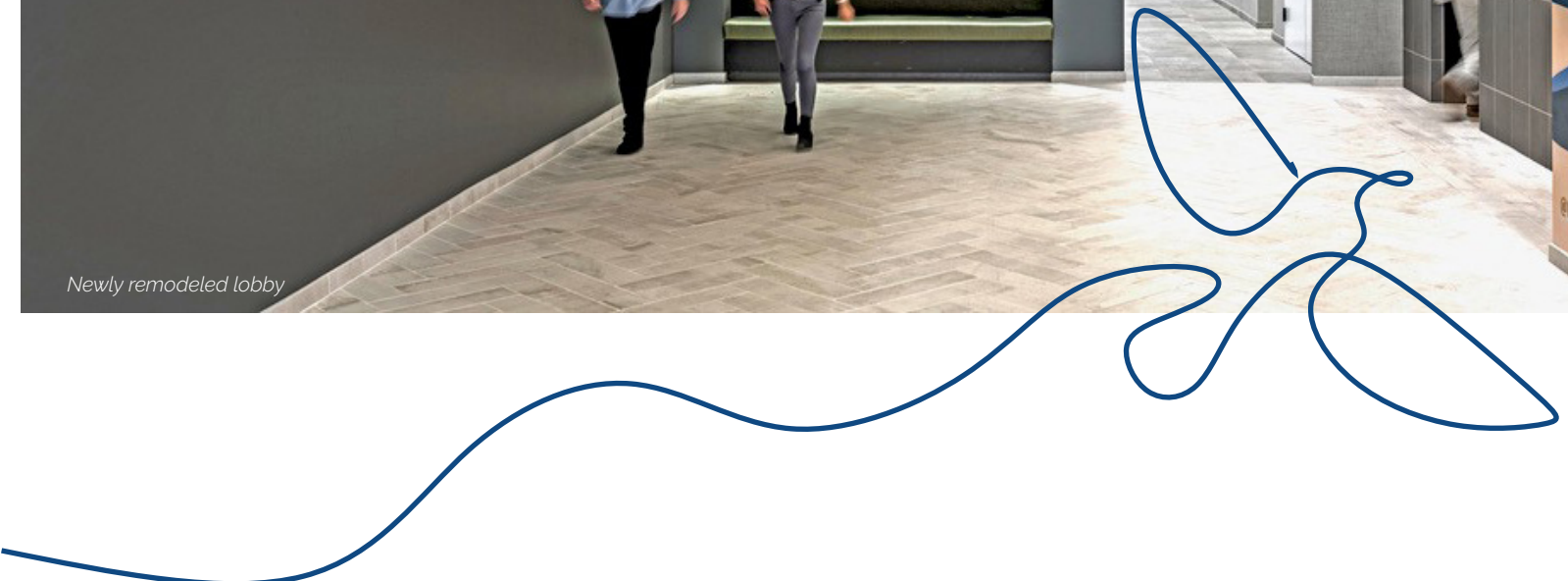
Shel Silverstein
How Many, How Much

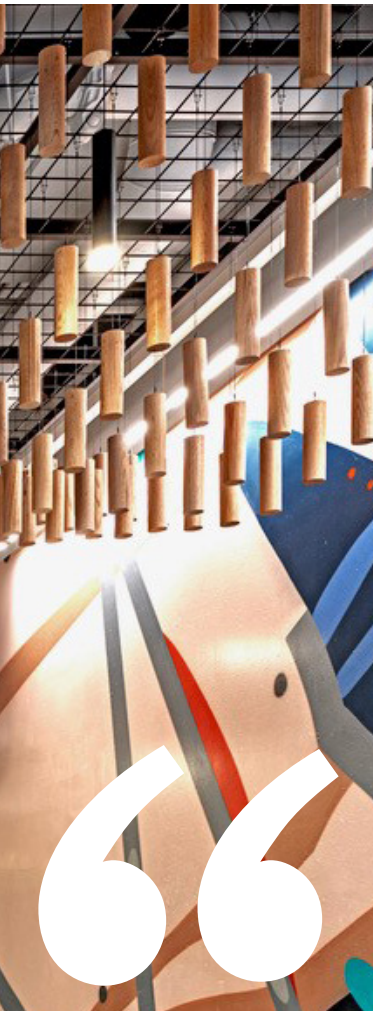


820



Newly remodeled lobby





Good times

820 Davis has everything you need to make your workplace a place you'll want to be

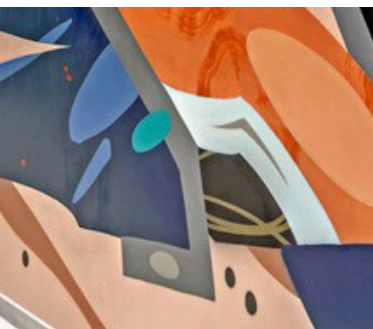
Work (and life) is what you make it. Make it great at 820 Davis with flexible floorplans, high ceilings, a modern atmosphere and an unbeatable location in downtown Evanston. Sure, extolling work-life

balance is a cliché at this point, but it's a reality that a vibrant environment can improve morale and office culture, boost your brand, and get better results for your business.



Time is the coin of your life. It is the only coin you have, and only you can determine how it will be spent.

- Carl Sandburg



Area Information

1-Mile Radius



86.2%

White Collar Workers



32.4

Median Age



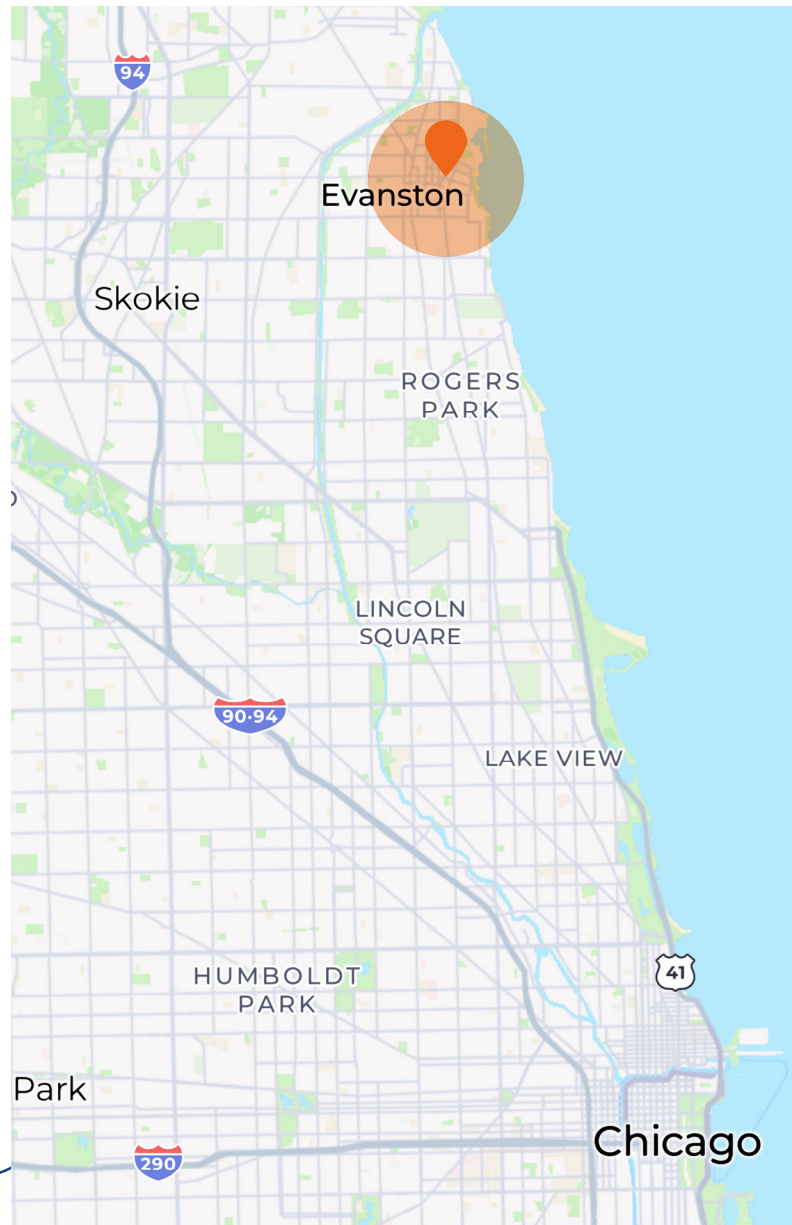
73.1%

Bachelor's/Graduate College Degree



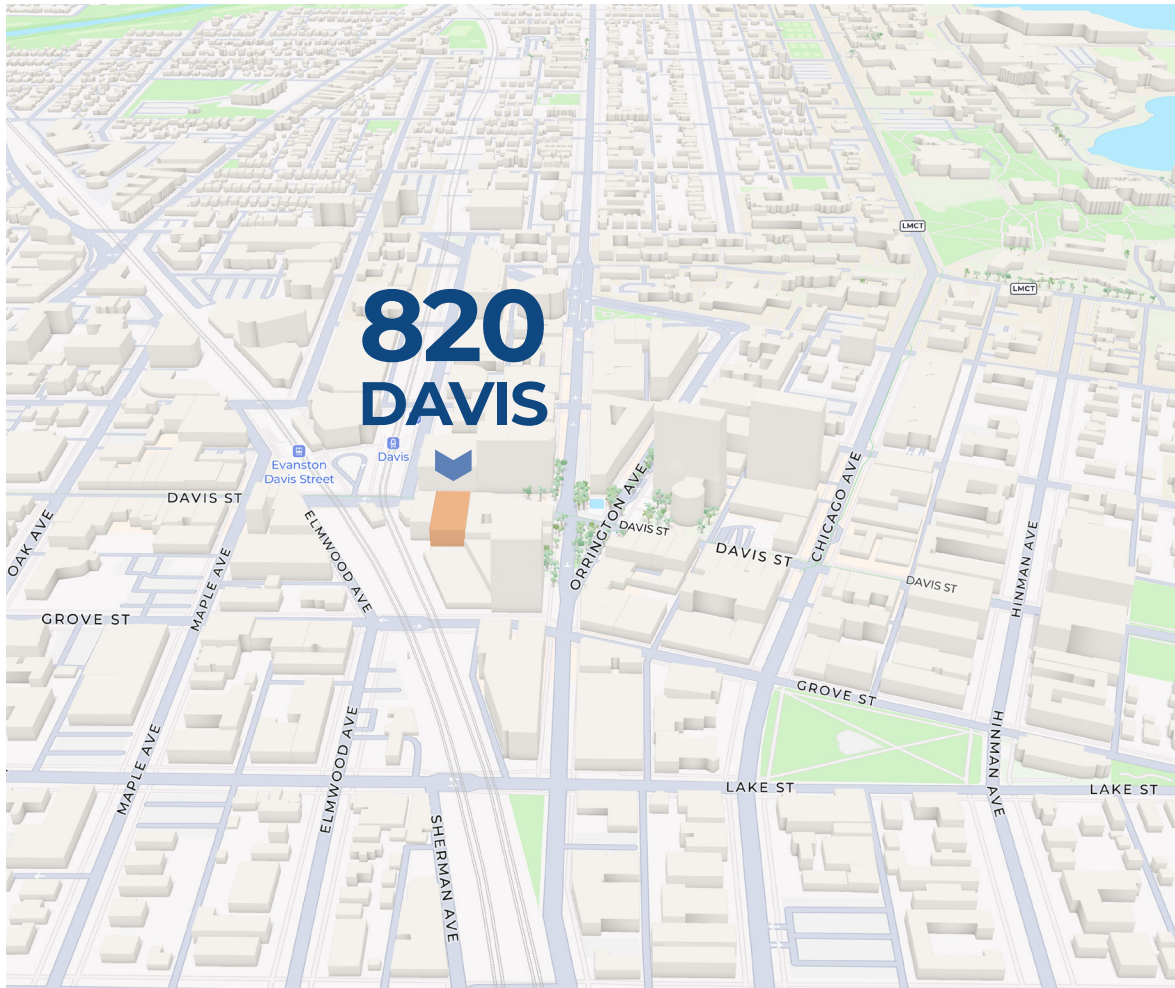
189

Restaurants/Food Vendors



Get More on the North Shore

Public transportation, easy access, beautiful
community, unbeatable location



820



Jason Wurtz
jwurtz@hiffman.com
630-693-0692

Bennett Baker
bbaker@hiffman.com
630-317-0751