



FOR LEASE

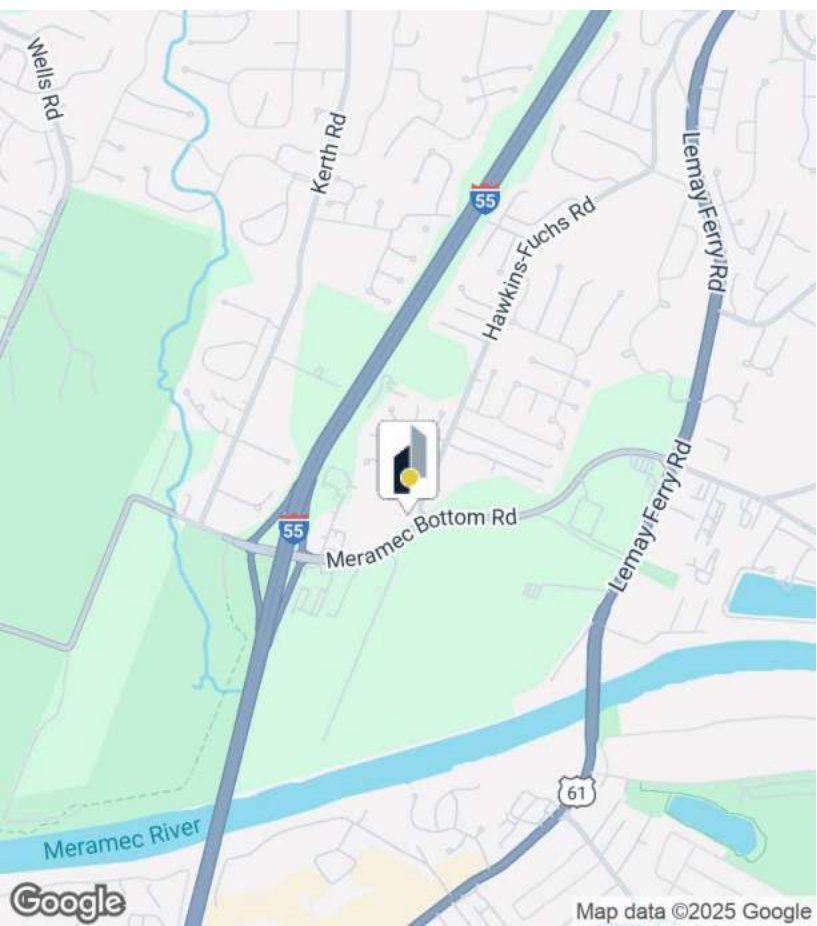
4401 & 4409 Meramec Bottom Road | Saint Louis, MO 63129



4401 & 4409 Meramec Bottom Road



FOR LEASE:
\$14.00 SF/YR
NNN



Spaces

Space Size

4409I	1,400 SF
4401H	1,703 SF

Property Highlights

- Single Story Multi-Tenant Class B Office/Medical/Retail Buildings
- Excellent access to I-55
- Signage Available
- Great turn-key options available with nice office finishes, restrooms, kitchenettes and exam room space

This information has been obtained from sources believed reliable but has not been verified for accuracy or completeness. You should conduct a careful, independent investigation of the property and verify all information. Any reliance on this information is solely at your own risk.



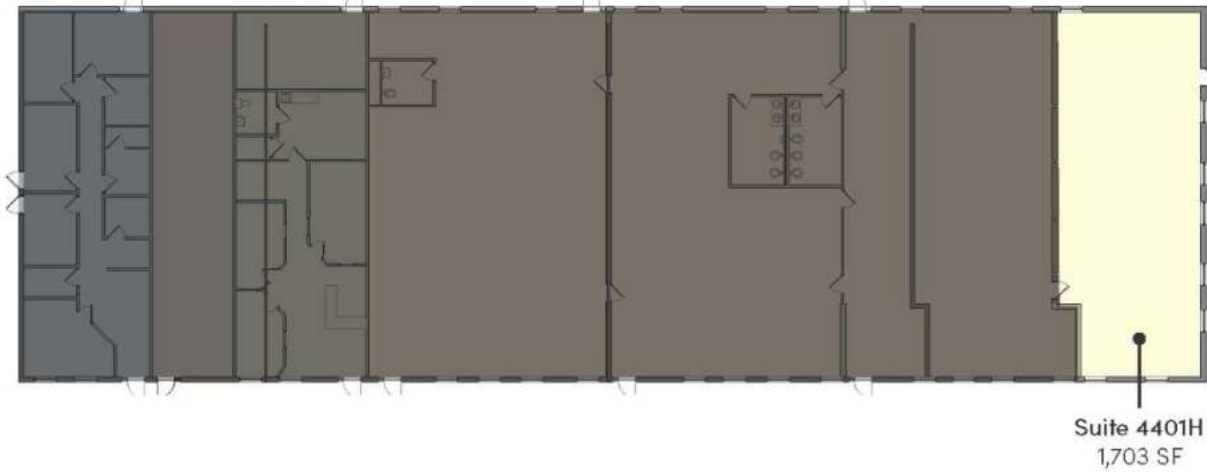
This information has been obtained from sources believed reliable but has not been verified for accuracy or completeness. You should conduct a careful, independent investigation of the property and verify all information. Any reliance on this information is solely at your own risk.



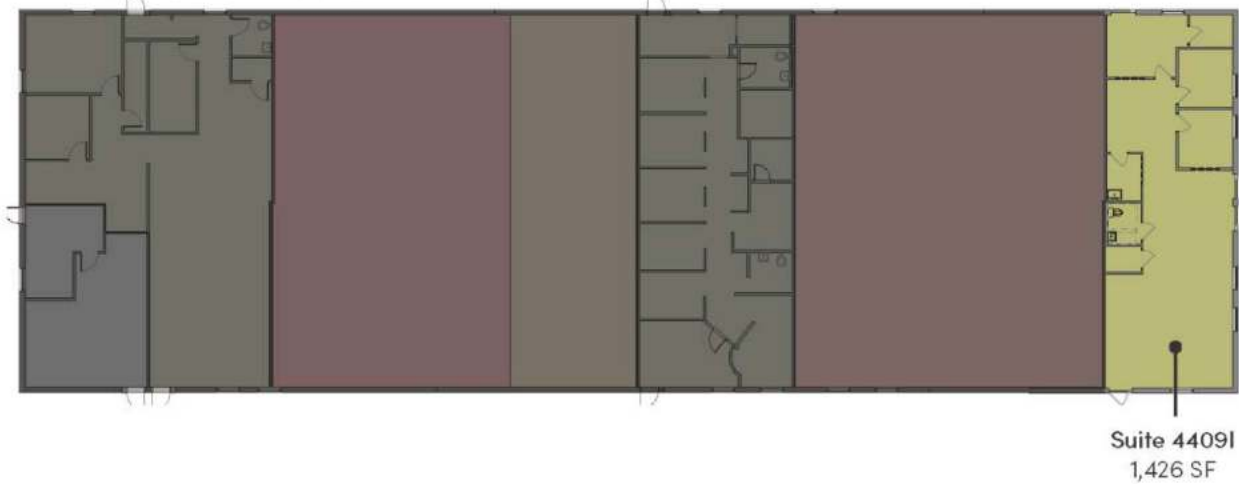
Floor Plans

4401 & 4409 Meramec Bottom Road

4401 Meramec Bottom Road



4409 Meramec Bottom Road



Broker Contacts



Tyler Hyde

Vice President | Brokerage
(314) 744-8984
thyde@intcre.com



Austin Dazey

Associate | Brokerage
(636) 346-3490
adazey@intcre.com