

# 300 Park Street

Birmingham, MI

Suite 480: 13,127 SF Plug and Play Updated Space Available



## Contact Us

**Edward Wujek**

Executive Vice President  
+1 248 351 2058  
edward.wujek@cbre.com

**Brendan George**

Senior Vice President  
+1 248 351 2039  
brendan.george@cbre.com

**Kelly Cubbin**

Vice President  
+1 248 936 6852  
kelly.cubbin@cbre.com

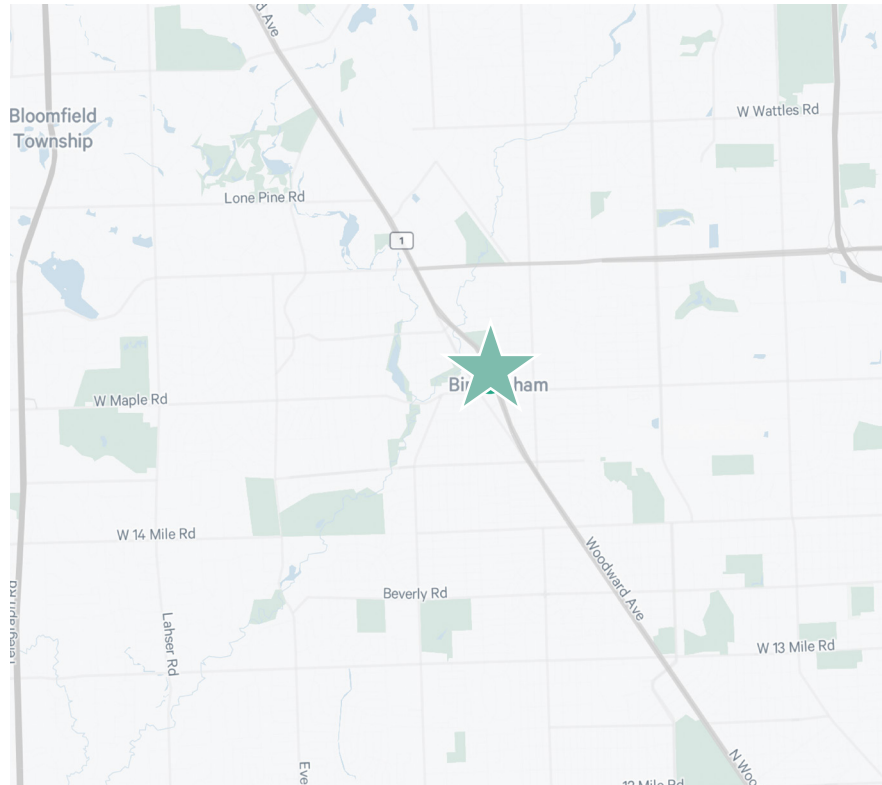
# Property Features

13,127

Available Square Footage

Contact Broker

Lease Rate



# Comments

- Updated suite with higher end finishes and views of Woodward Avenue
- In the heart of downtown Birmingham
- Renovated Building Lobby
- Walkable to Restaurants, Retail, Hotels and more
- Directly across the street from city owned Parking Structure. Some covered parking available on site
- FF&E Available

13,127 SF AVAILABLE  
300 Park Street, Birmingham, MI

Sublease

# Photos



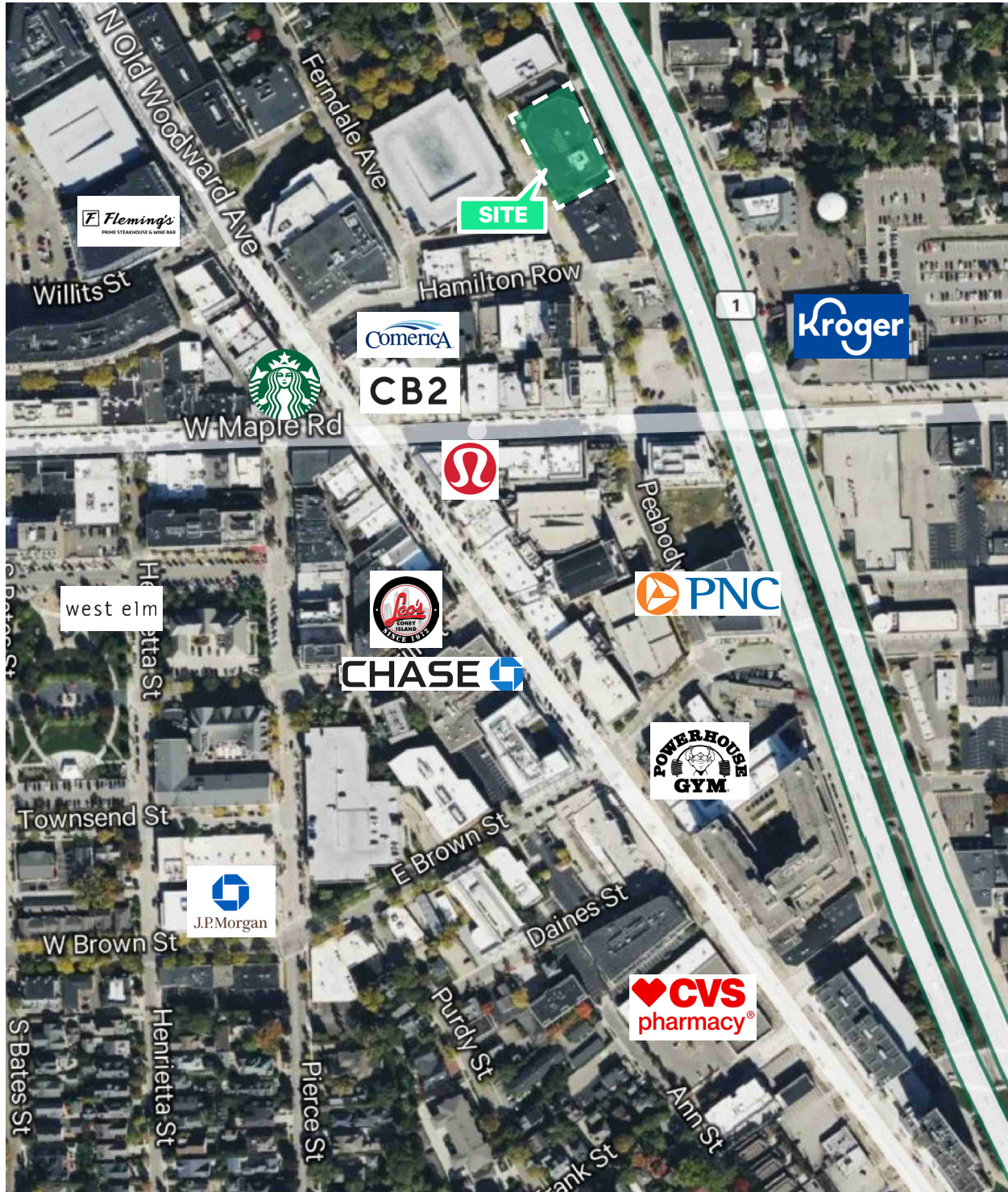
# Photos



13,127 SF AVAILABLE  
300 Park Street, Birmingham, MI

Sublease

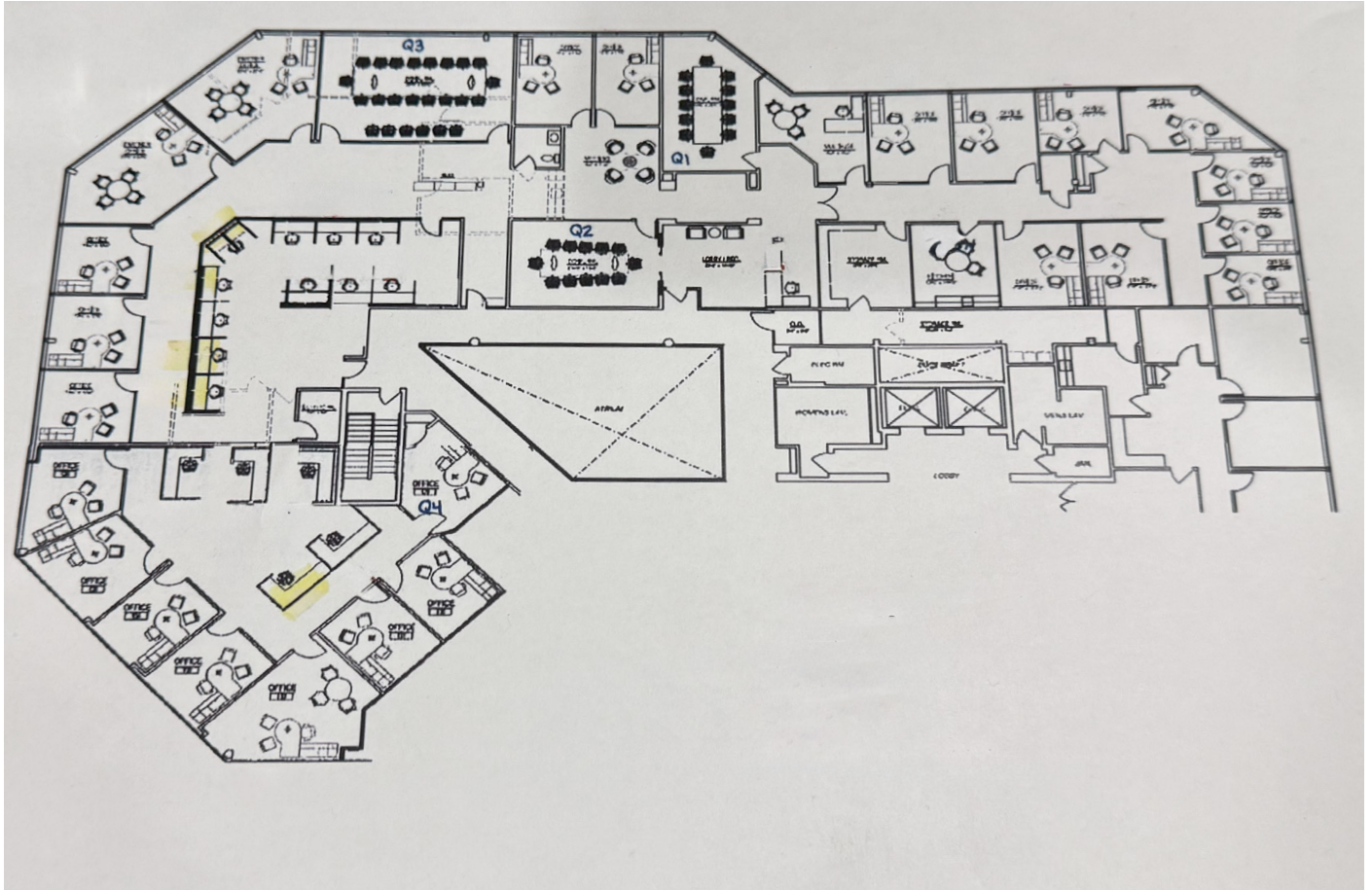
# Amenities



13,127 SF AVAILABLE  
300 Park Street, Birmingham, MI

Sublease

# Floorplan



## Contact Us

**Edward Wujek**  
Executive Vice President  
+1 248 351 2058  
edward.wujek@cbre.com

**Brendan George**  
Senior Vice President  
+1 248 351 2039  
brendan.george@cbre.com

**Kelly Cubbin**  
Vice President  
+1 248 936 6852  
kelly.cubbin@cbre.com