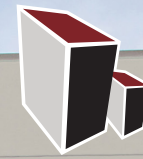


14407 S. Gougar Road, Lockport, IL



ML REALTY
PARTNERS



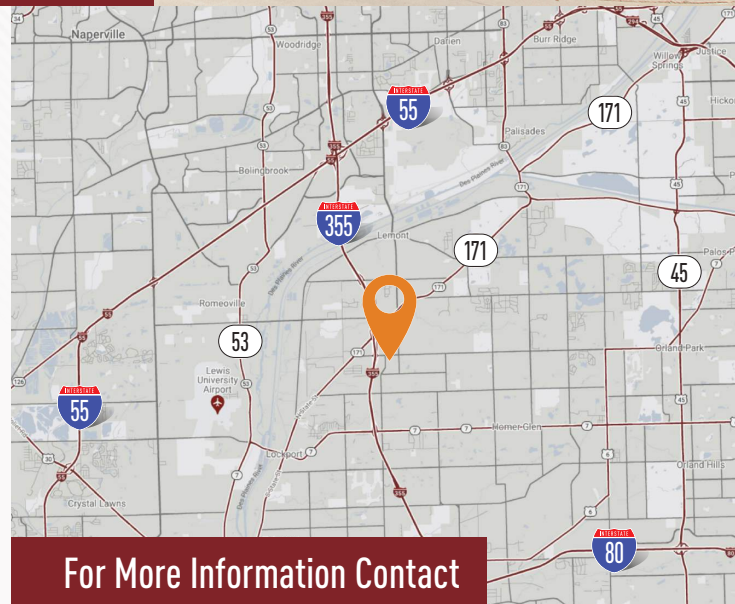
35,039 SF AVAILABLE

Building Specifications

Building Size: 121,800 SF
Available: 35,039 SF
Office: 1,532 SF
Clear Height: 30' Clear
Loading: 8 Exterior Truck Docks
Drive In Doors: 2
Lighting: T5
Total Power: 1,000 Amps, 480 Volts, 3-Phase
Car Parking: 34 Spaces
Trailer Parking: 8 Trailer Stalls
Column Spacing: 42' x 50', with a 60' Speed Bay
Sprinkler System: ESFR

Building Features

- › I-355 & 143rd Street full interchange
- › Easy access to/from major interstates
- › Concrete truck courts



For More Information Contact

NAI Hiffman
Commercial Real Estate Services, Worldwide

HIFFMAN
NATIONAL

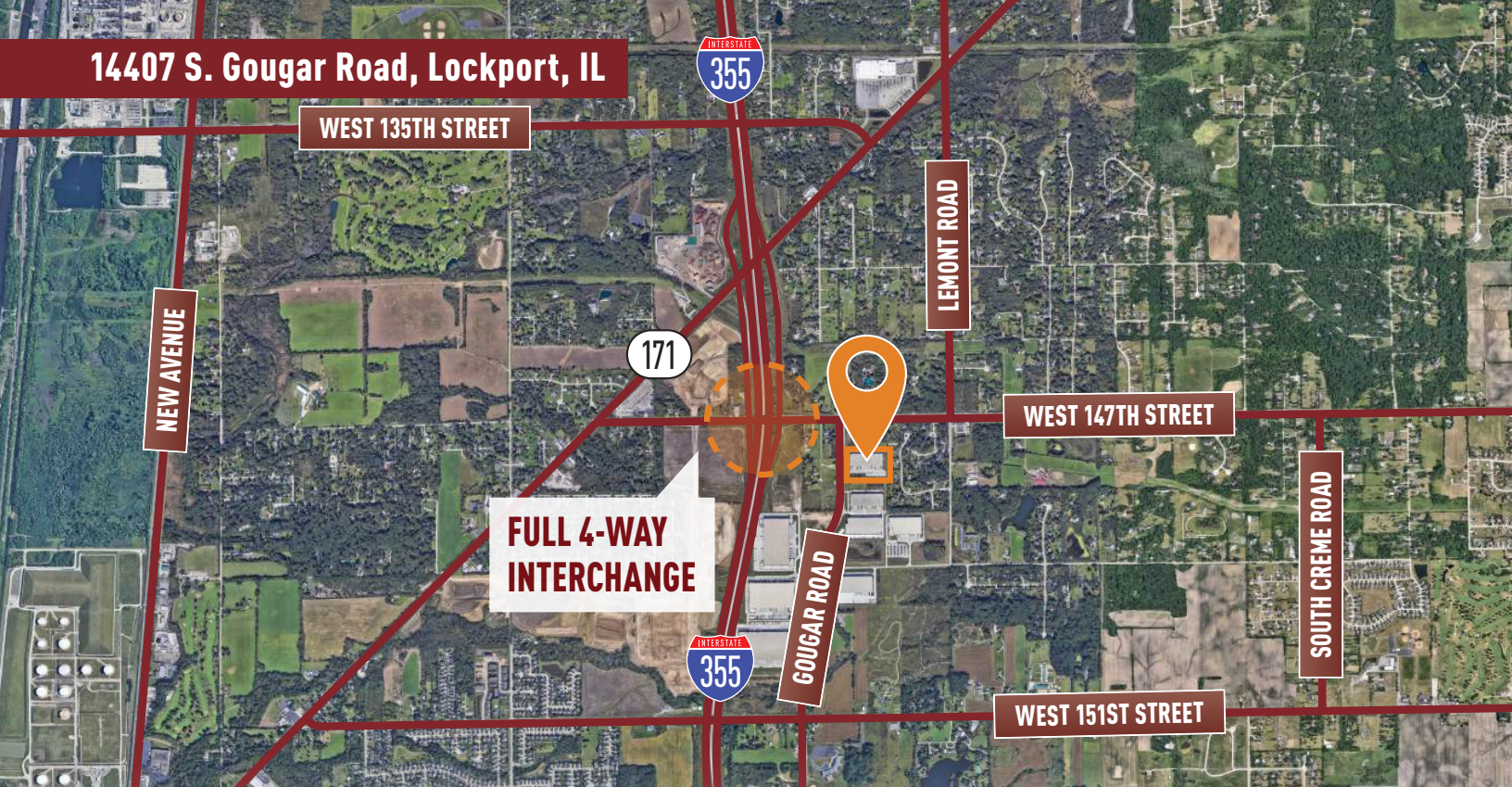
DAN LEAHY, SIOR
630-691-0604
dleahy@hiffman.com

JOHN WHITEHEAD
630-693-0643
jwhitehead@hiffman.com

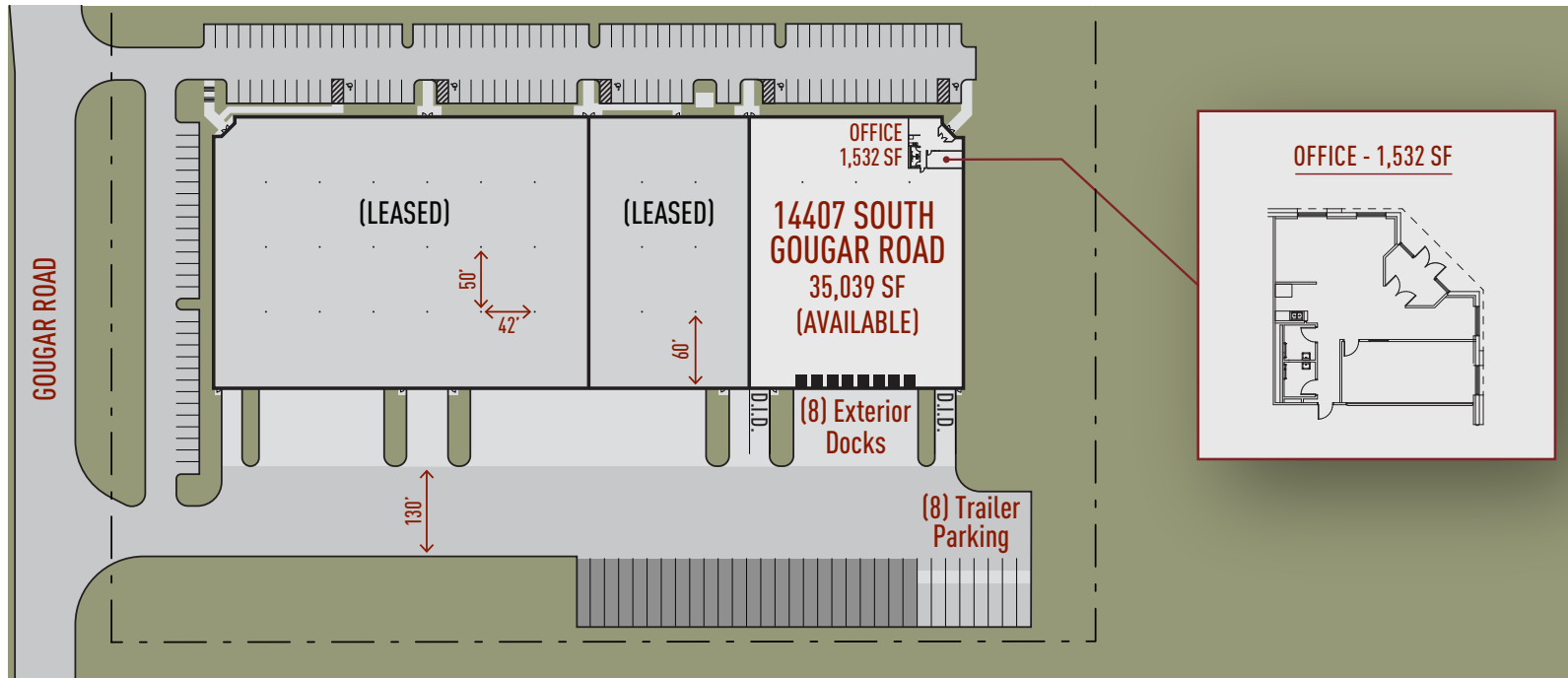
MARK MORAN
630-693-0656
mmoran@hiffman.com

Owner:
ML Realty Partners \ \ One Pierce Place, Suite 450, Itasca, Illinois 60143 \ \ 630-250-2900
Information contained herein is subject to change and verification, and no liability for errors or omissions is assumed. © 2026 All Rights Reserved. ML Realty Partners

14407 S. Gougar Road, Lockport, IL



Master Plan Rendering



NORTH ↑



ML REALTY
PARTNERS

ML Realty Partners \ \ One Pierce Place, Suite 450, Itasca, Illinois 60143 \ \ 630-250-2900

Information contained herein is subject to change and verification, and no liability for errors or omissions is assumed. © 2026 All Rights Reserved. ML Realty Partners