

**SHORT TERM
LEASES
AVAILABLE**

KORE co-working

KORE 9250

9250 E COSTILLA AVE, GREENWOOD VILLAGE, CO

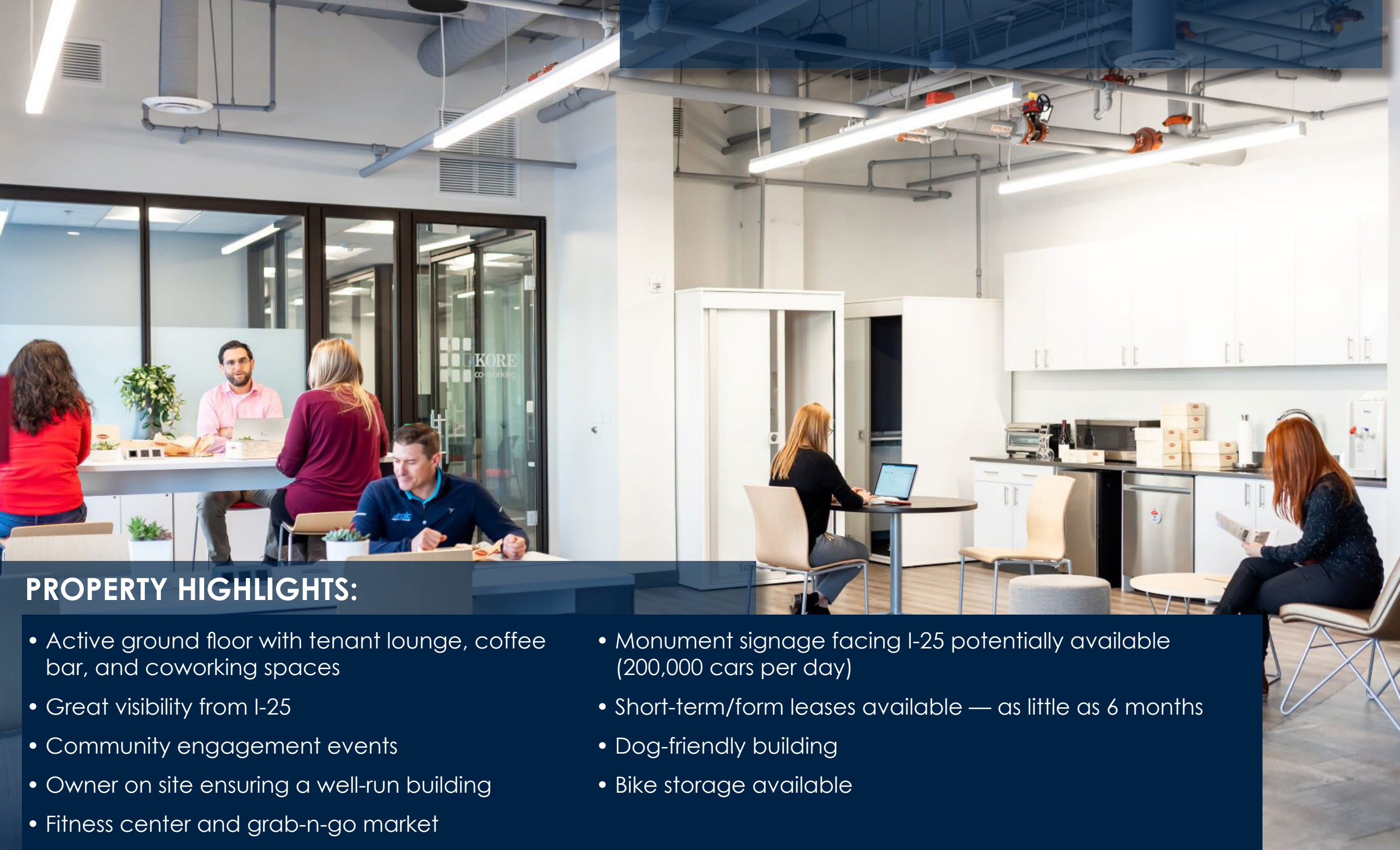
OFFICE OR MEDICAL

For leasing information contact:

Michelle Gertzman | 720.743.6399
mgertzman@premisescommercial.com

Matt Smith | 303.996.8460
msmith@premisescommercial.com





PROPERTY HIGHLIGHTS:

- Active ground floor with tenant lounge, coffee bar, and coworking spaces
- Great visibility from I-25
- Community engagement events
- Owner on site ensuring a well-run building
- Fitness center and grab-n-go market
- Monument signage facing I-25 potentially available (200,000 cars per day)
- Short-term/form leases available — as little as 6 months
- Dog-friendly building
- Bike storage available

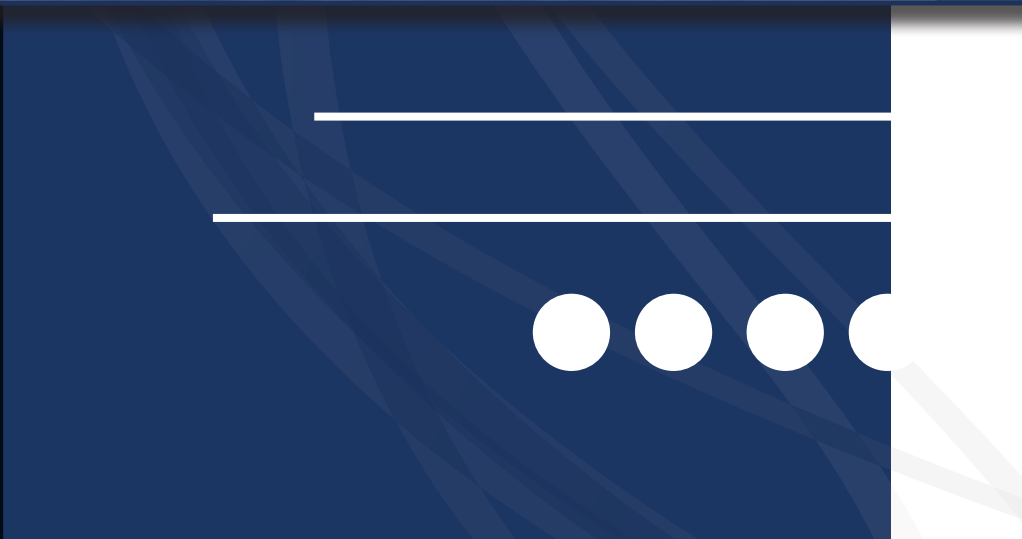


CLOSE TO SHOPPING,
RESTAURANTS & PARKS

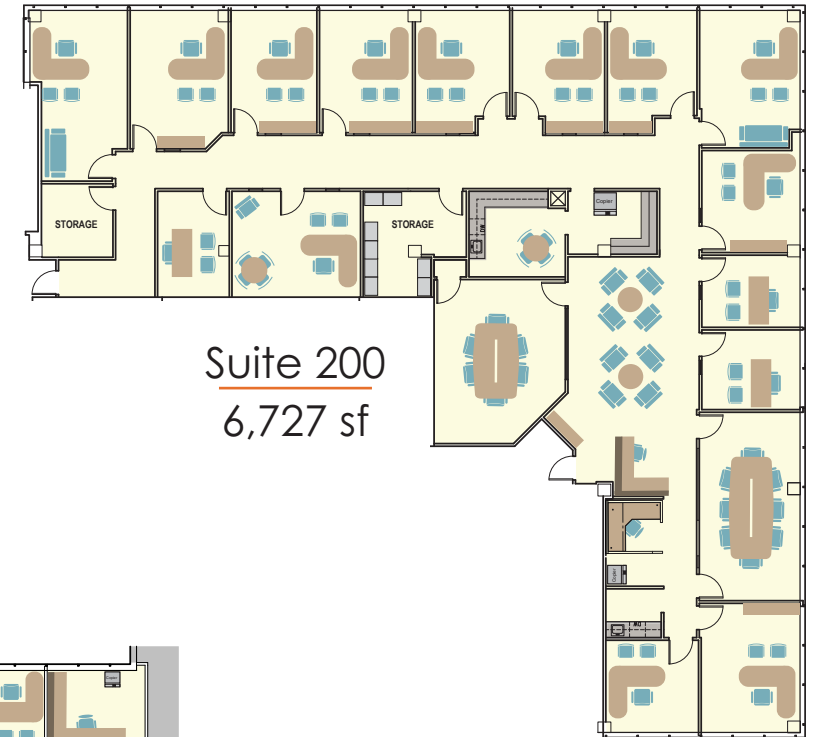
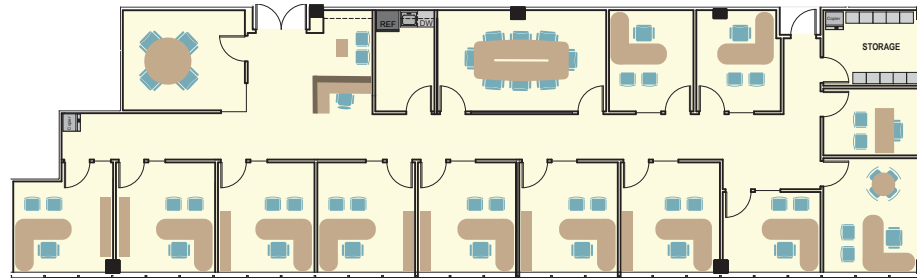


KORE
9250

- SAFeway
- PIN DUS TRY
- Garnish
- FIDDLER'S GREEN AMPHITHEATRE
- crumbl
- SPROUTS FARMERS MARKET
- Jersey Mike's SUBS
- REI
- THE HOME DEPOT
- Walmart*
- QDOBA
- BENEDICT'S BREAKFAST • LUNCH • BURGERS
- TACO BELL
- PAPA JOHN'S
- Schlotzsky's
- Sushi Katsu
- VENALONZO'S TACOS
- VIEWHOUSE EATERY, BAR & ROOFTOP
- TOPGOLF
- WALNUT HILLS ELEMENTARY
- WALNUT HILLS PARK
- HUNTERS HILL PARK
- DRY CREEK ELEMENTARY
- MAGGIANO'S LITTLE ITALY

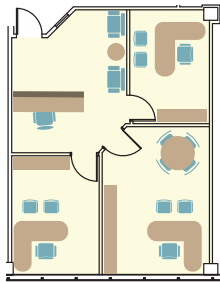


Suite 305
4,189 sf

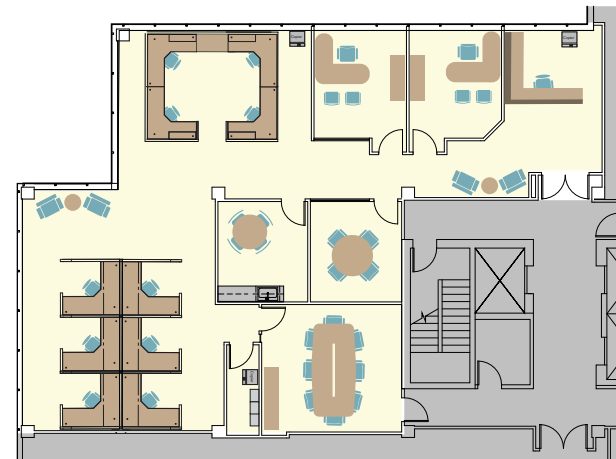
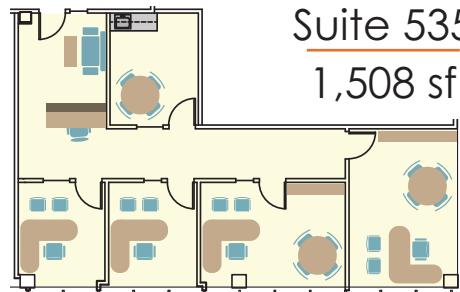


Suite 200
6,727 sf

Suite 205
942 sf



Suite 535
1,508 sf



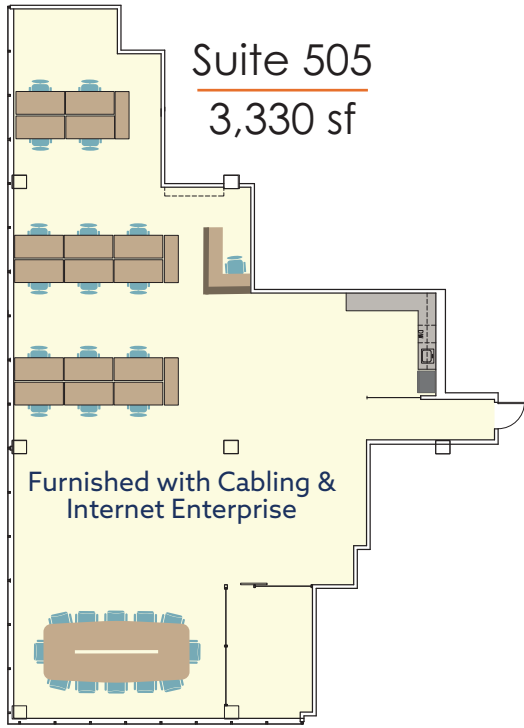
Suite 210
3,492 sf

(Available 5/1/2027)

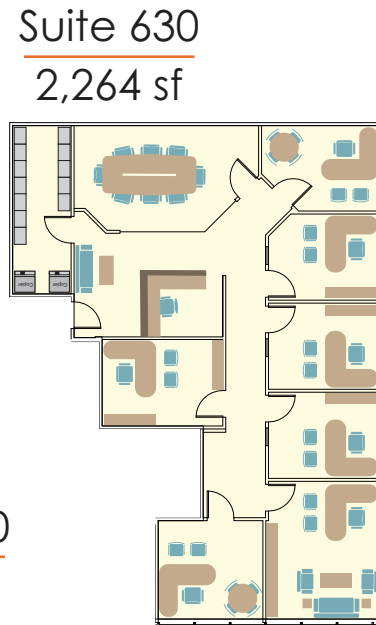


AVAILABLE SUITES

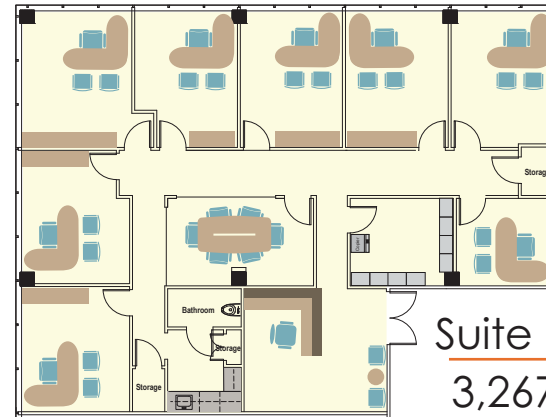




Suite 505
3,330 sf



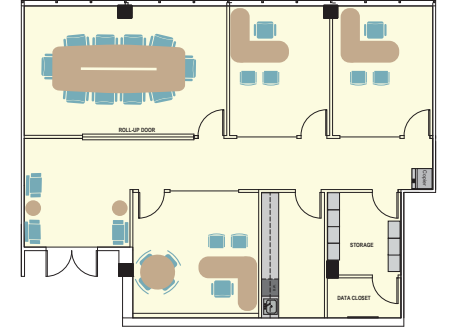
Suite 630
2,264 sf



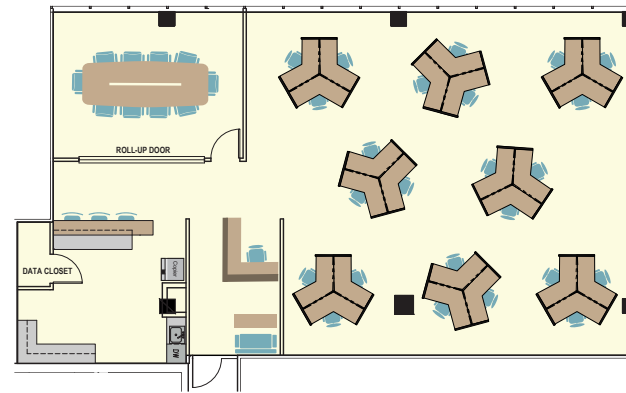
Suite 600
3,267 sf

(Available 8/1/2026)

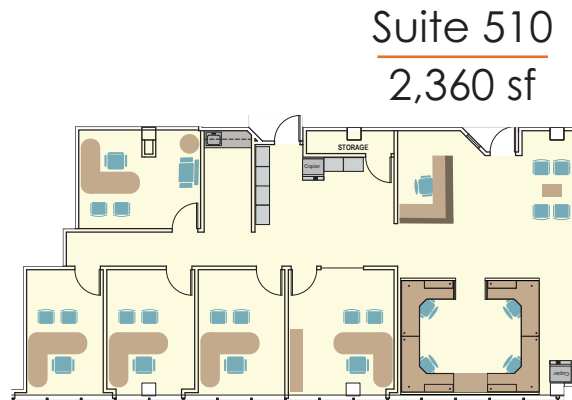
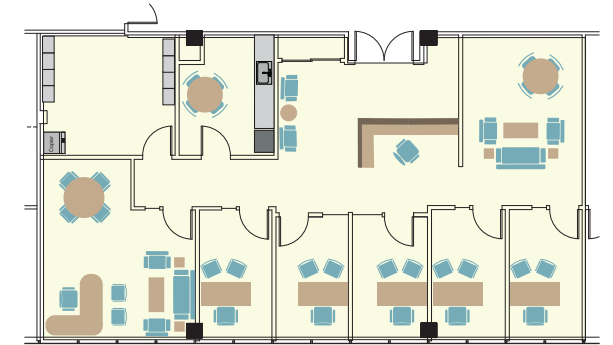
Suite 620
2,007 sf



Suite 650
2,719 sf



Suite 655
2,159 sf



Suite 510
2,360 sf

For leasing information contact:

Michelle Gertzman | 720.743.6399
mgertzman@premisescommercial.com

Matt Smith | 303.996.8460
msmith@premisescommercial.com

AVAILABLE SUITES