

FOR SALE: MARTIN CITY RETAIL, OFFICE, AND INDUSTRIAL SPACE

PEAK
Real Estate Partners

510 E. 135TH STREET

KANSAS CITY, MO 64145



WYATT PALMER | ASSOCIATE



(913) 230-3100



WPALMER@PEAKREP.COM

PROPERTY HIGHLIGHTS

510 E. 135TH STREET | KANSAS CITY, MO 64145

- 8,623± SF of flexible retail, office, and warehouse space for sale
- 6,644± SF warehouse / 1,979± SF of office and showroom
- 0.26 acre site
- Paved private parking lot
- Loading: 2 grade-level doors
 - 1 front loading – 12'(W) x 10'(H)
 - 1 rear loading – 10'(W) x 12'(H)
- Warehouse clear height: 19'
- Located in the heart of Martin City, surrounded by Jack Stack Barbecue, Martin City Brewing, Jess & Jim's Steakhouse, Rosehill Winery and more
- Offers a unique opportunity for businesses seeking retail, office, and warehouse space in one of Kansas City's most charming neighborhood corridors
- Asking Price: \$1,000,000



Historical Note The Original Martin City Bank | Est. 1909

- Built in 1909, this building served as the Martin City Bank, the financial heart of an independent community. Still retaining pieces of the original structure, this offers a buyer a rare opportunity to own a piece of Kansas City history.
- Original exposed brick walls
- Pressed tin ceiling
- Arched storefront windows
- Historic vault room



AVAILABLE SF
8,623±



RETAIL, OFFICE, AND
WAREHOUSE SPACE



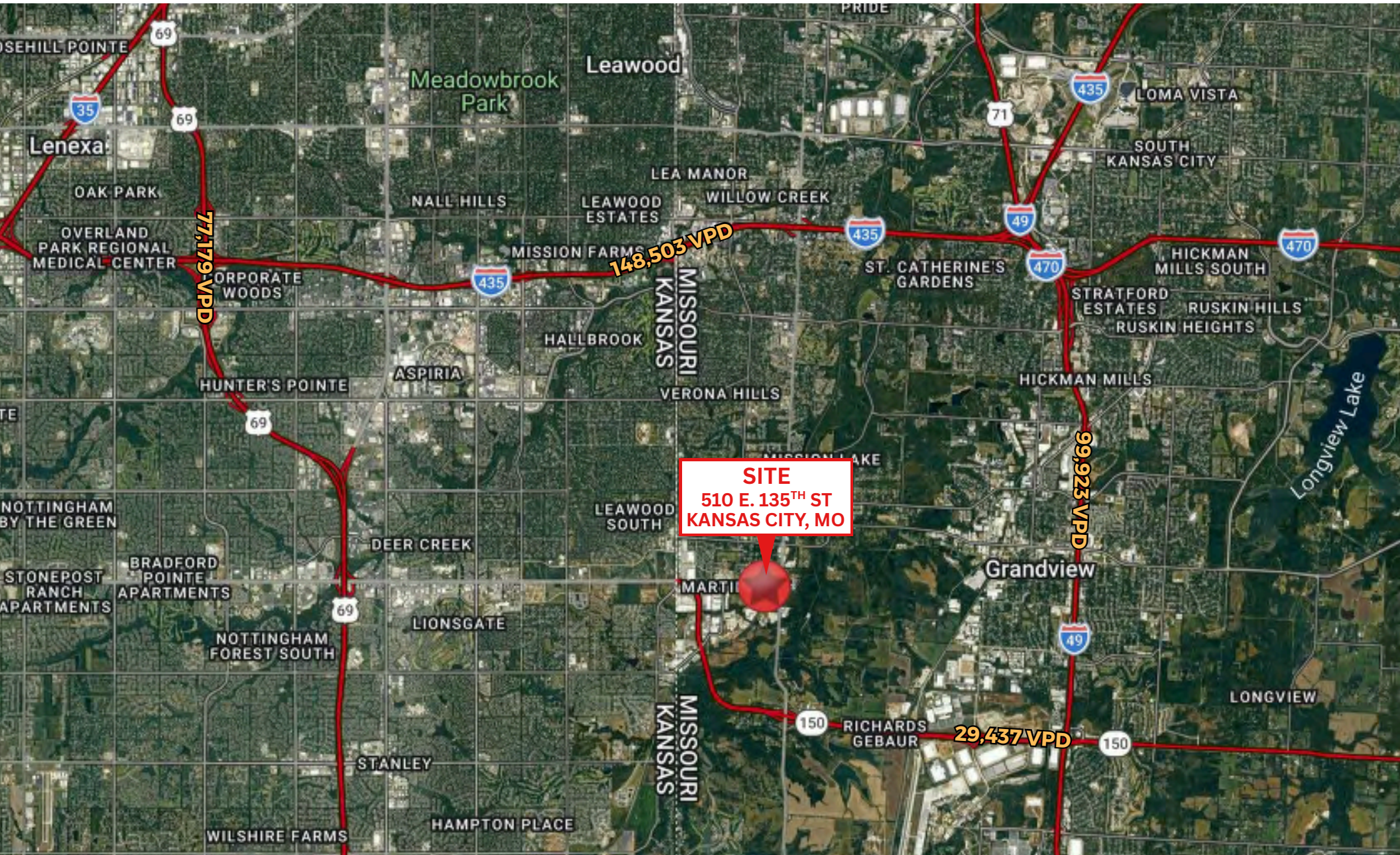
LOCATED IN THE HEART OF
MARTIN CITY



ASKING PRICE
\$1,000,000

AERIAL

510 E. 135TH STREET | KANSAS CITY, MO 64145



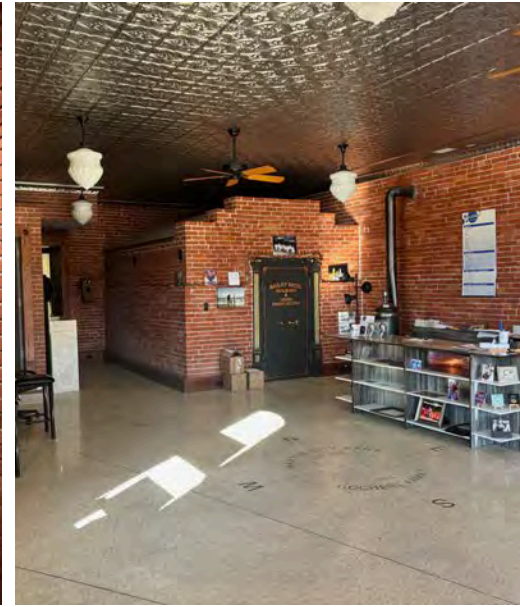
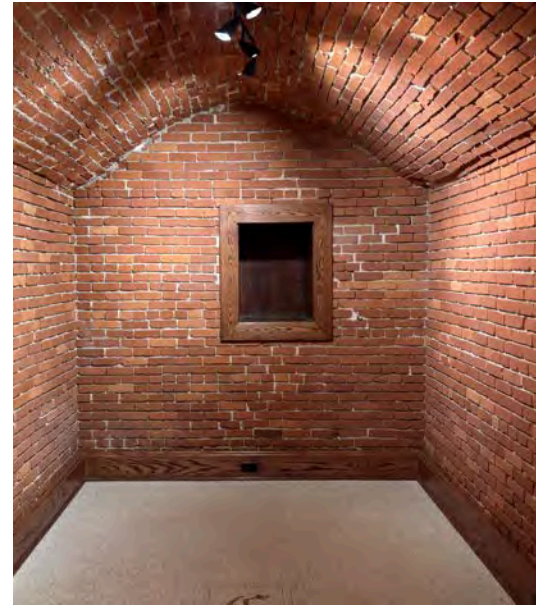
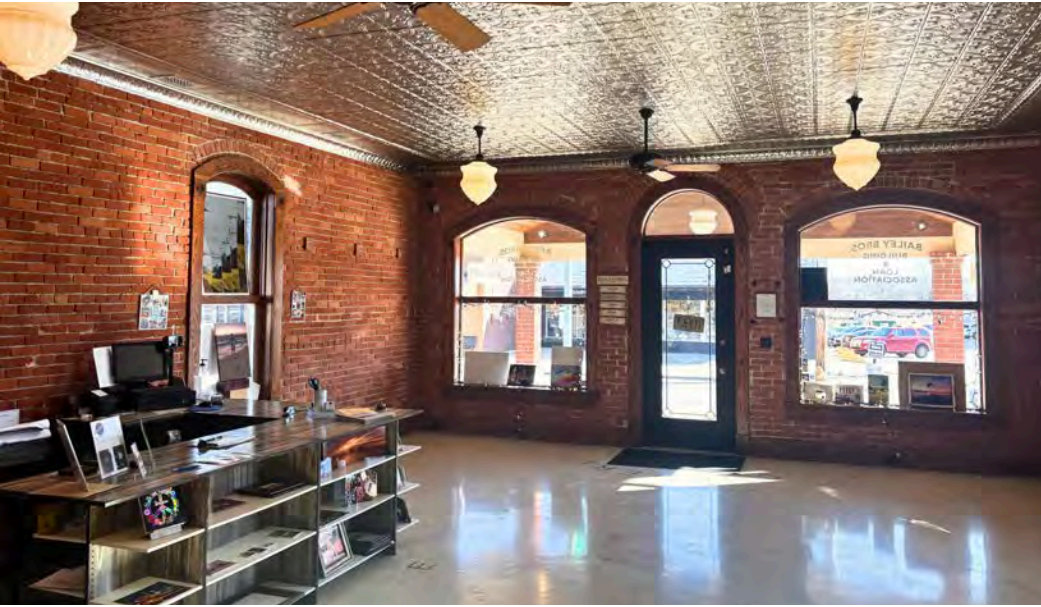
PROPERTY MAP

510 E. 135TH STREET | KANSAS CITY, MO 64145



RETAIL/OFFICE PHOTOS

510 E. 135TH STREET | KANSAS CITY, MO 64145



WAREHOUSE PHOTOS

510 E. 135TH STREET | KANSAS CITY, MO 64145

