

# VICTORIA PARK VILLAGE CENTER - PHASE 1

1431 Orange Camp Rd | Deland, FL 32724

Office For Lease



**LQ Commercial**  
REAL ESTATE SERVICES

[LOCRE.COM](http://LOCRE.COM)



**\$26.00**  
PSF

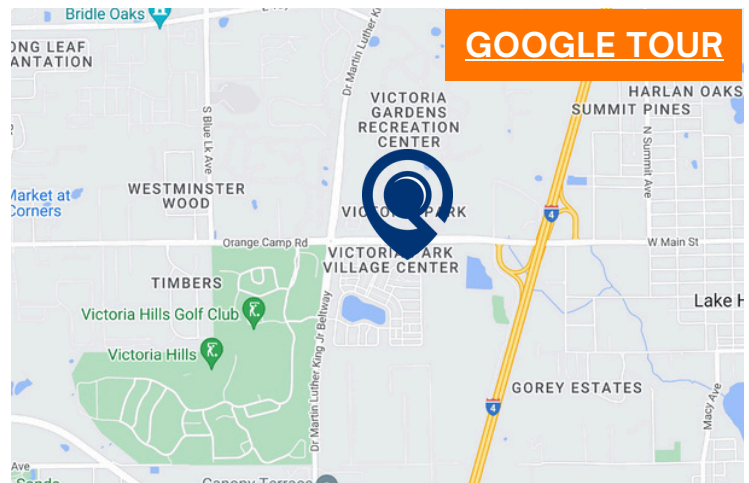


**600 - 5,400**  
SF



**25,000**  
GLA

- Built out office space available - 600 - 5,400 SF.
  - Unit # 109 B - 600 SF
  - Unit #114 - 1,200 SF
  - Unit #115 - 1,800 SF
  - Unit #116/117 - 2,400 SF
- Join AdventHealth, Woof Gang Bakery, PNC Bank, and more.
- Serves the Victoria Park neighborhood in Deland, FL.
- High average household income of \$123,543 in a 1-mile radius.
- Less than 1 Mile from I-4.



[LOCRE.COM/VICTORIA-PARK-PHASE-ONE](http://LOCRE.COM/VICTORIA-PARK-PHASE-ONE)



5-MILE POPULATION

**96,594**



5-MILE INCOME

**\$87,691**



5-MILE EMPLOYEES

**25,908**



500 Winderley Place #104  
Maitland, FL 32751

[LOCRE.COM](http://LOCRE.COM)

**Julia Sosa**  
Founding Principal

D: 407.775.4358

C: 407.257.8246

[jsosa@lqcre.com](mailto:jsosa@lqcre.com)

**Eva Grace Royal**  
Principal, Senior Associate

D: 407.705.2217

C: 407.421.3532

[eroyal@lqcre.com](mailto:eroyal@lqcre.com)

# VICTORIA PARK VILLAGE CENTER - PHASE 1

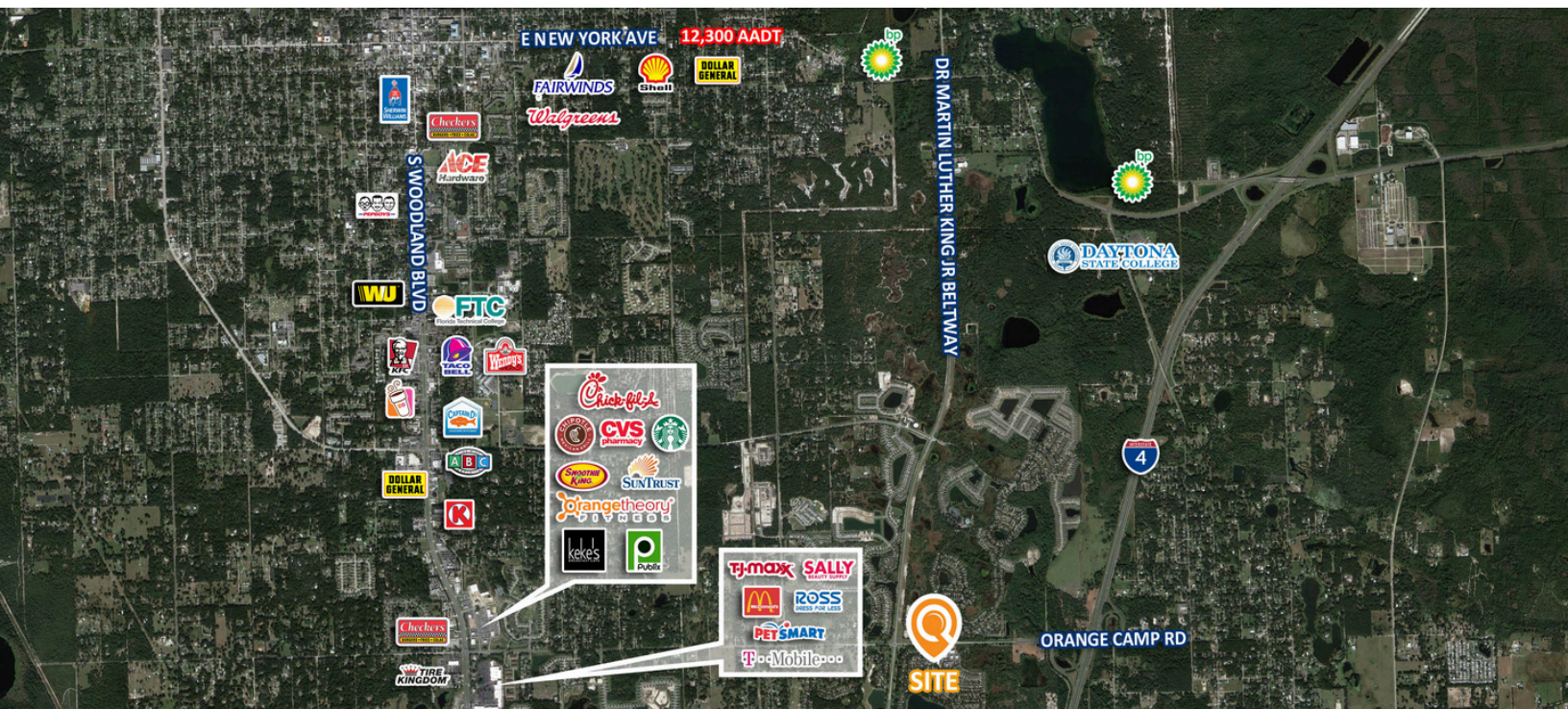
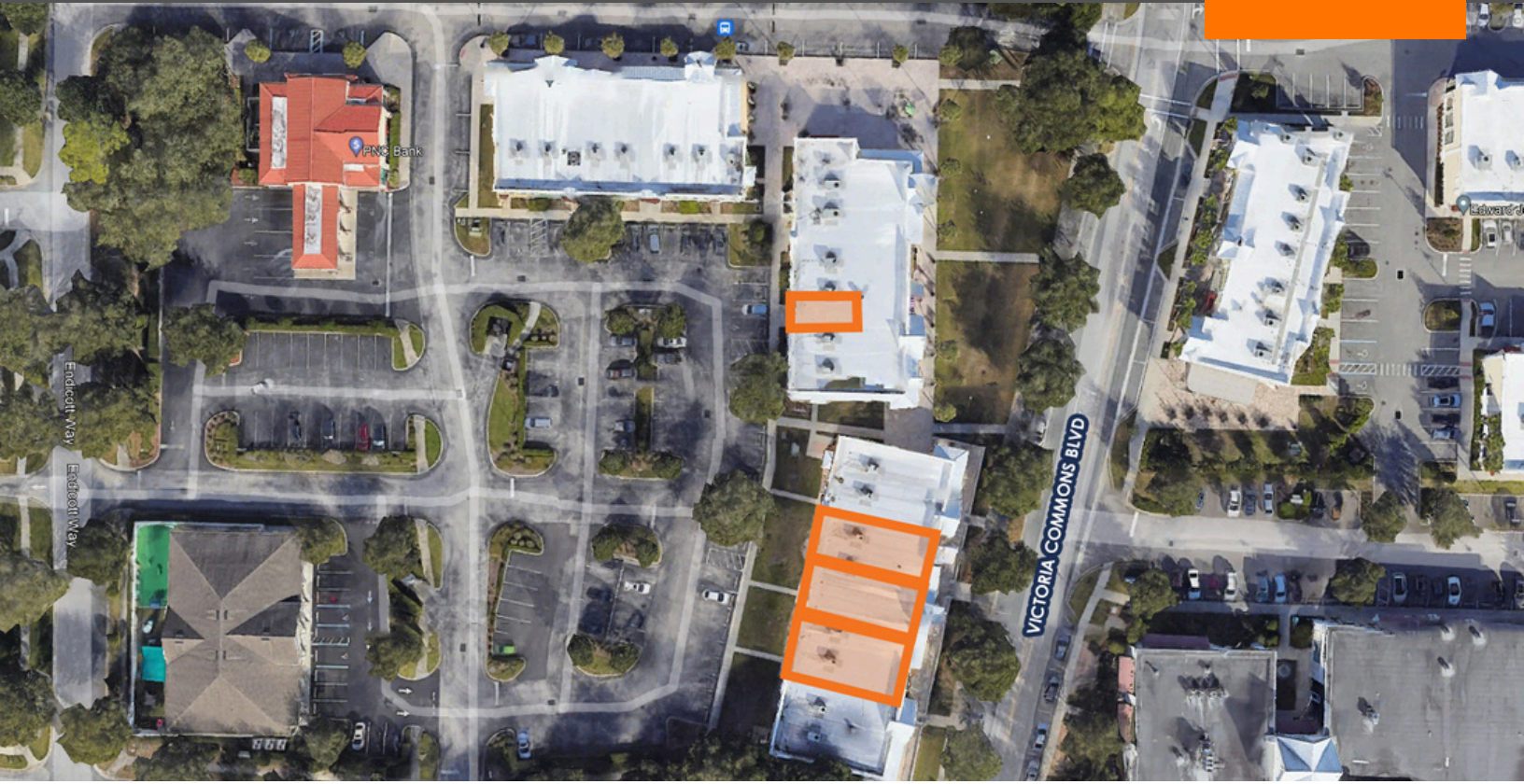
1431 Orange Camp Rd | Deland, FL 32724

Office For Lease



**LQ Commercial**  
REAL ESTATE SERVICES

**LQCRE.COM**



 **LQ Commercial**  
REAL ESTATE SERVICES  
500 Winderley Place #104  
Maitland, FL 32751  
**LQCRE.COM**

**Julia Sosa**  
Founding Principal  
D: 407.775.4358  
C: 407.257.8246  
[jsosa@lqcre.com](mailto:jsosa@lqcre.com)

**Eva Grace Royal**  
Principal, Senior Associate  
D: 407.705.2217  
C: 407.421.3532  
[eroyal@lqcre.com](mailto:eroyal@lqcre.com)

# VICTORIA PARK VILLAGE CENTER - PHASE 1

1431 Orange Camp Rd | Deland, FL 32724

Office For Lease



**LQ Commercial**  
REAL ESTATE SERVICES

**LQCRE.COM**

101	102	103	104	105	106
ANIMAL CLINIC	ANIMAL CLINIC	WOOF GANG BAKERY	NAIL SALON	CLEANERS	VILLAGE CAFÉ

107	MURPH'S PATIO BAR & GRILL		
108	MURPH'S PATIO BAR & GRILL		
109	<table border="1"> <tr> <td>AVAILABLE Unit #109-B 600 SF</td> <td>SIMPLY SWEET</td> </tr> </table>	AVAILABLE Unit #109-B 600 SF	SIMPLY SWEET
AVAILABLE Unit #109-B 600 SF	SIMPLY SWEET		
110	NAT'L DIABETES		
111	STYLEWORKS HAIR SALON		

112/113	ATLANTIC EAR NOSE & THROAT
114	AVAILABLE Unit #114 1,200 SF
115	AVAILABLE Unit #115 1,800 SF
116/117	AVAILABLE Unit #116/117 2,400 SF
118/119	ADVENT HOSPITAL



500 Winderley Place #104  
Maitland, FL 32751

**LQCRE.COM**

**Julia Sosa**  
Founding Principal

D: 407.775.4358  
C: 407.257.8246

[jsosa@lqcre.com](mailto:jsosa@lqcre.com)

**Eva Grace Royal**  
Principal, Senior Associate

D: 407.705.2217  
C: 407.421.3532

[eroyal@lqcre.com](mailto:eroyal@lqcre.com)