



## Flex Office/Warehouse Available for Sublease in Inverness

14 INVERNESS DRIVE EAST, SUITE F148-164  
ENGLEWOOD, CO

### Space Available

7,825 SF (Divisible)

### Lease Rate

Contact Broker

### Space Configuration

±50% Office

### Loading

Dock High Loading (10'x10')

### Term

Through June 30th, 2026  
(Direct Deal For Longer Term Possible)

### Flex Office/Warehouse for Sublease Property Highlights

- Prominent Inverness Business Park setting by the Inverness Golf Club
- Two prime I-25 access points at County Line and Dry Creek, as well as access to E-470
- Nearby amenities include Park Meadows Mall and other major retail outlets, restaurants, Inverness Health Club and Golf Course
- Warehouse clear height of ±12'
- Parking Ratio of 2.5: 1,000 SF

*For information, please contact:*

#### Keith Bell

t 303-260-4332  
keith.bell@nmrk.com

1800 Larimer Street,  
Suite 1700,  
Denver, CO 80202

[nmrk.com](http://nmrk.com)



**NEWMARK**

The information contained herein has been obtained from sources deemed reliable but has not been verified and no guarantee, warranty or representation, either express or implied, is made with respect to such information. Terms of sale or lease and availability are subject to change or withdrawal without notice.

**14 INVERNESS DRIVE EAST, SUITE F148-164, ENGLEWOOD, CO**

**Space Available**

7,825 SF (divisible)

**Lease Rate**

Contact Broker

**Space Configuration**

±50% Office

**Loading**

Dock High Loading

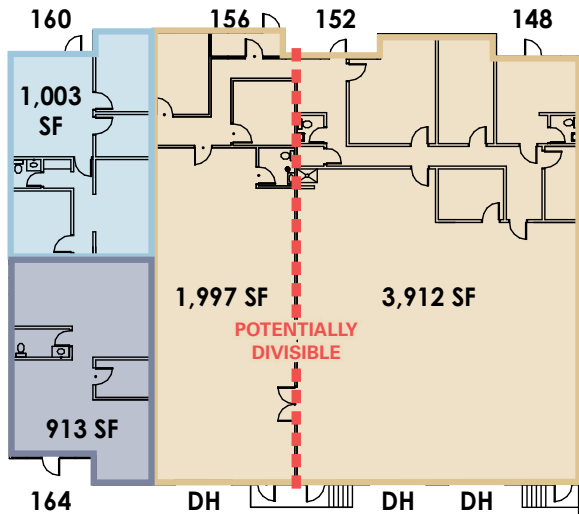
(10' x 10')

**Term**

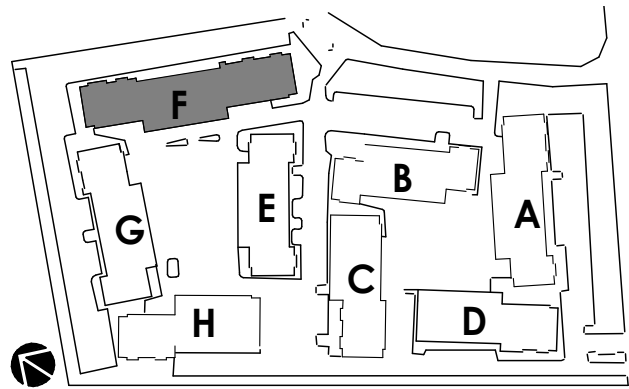
Through June 30th, 2026

(Direct Deal For Longer Term Possible)

**Floorplan**



**Site Plan**



**Map**

