

15116 BEECH DALY ROAD
REDFORD, MICHIGAN

INDUSTRIAL FOR SALE
2,680 Square Feet Available



**SIGNATURE
ASSOCIATES**
KNOW SIGNATURE | KNOW RESULTS



PROPERTY FEATURES

- 2,680 square feet available
- 2,000 square feet office
- 10' clear height
- (1) 8' x 9' grade level door
- Very clean, updated commercial building
- Lot paved in 2022
- New entry doors
- Recently updated restrooms and offices
- Can be duplexed
- Land Contract Terms Possible
- Sale Price: \$275,000 (\$102.61/sq. ft.)



For more information, please contact:

JUSTIN GAFFREY
(248) 799 3143
jgaffrey@signatureassociates.com

CHRIS D'ANGELO
(248) 948 0109
cdangelo@signatureassociates.com

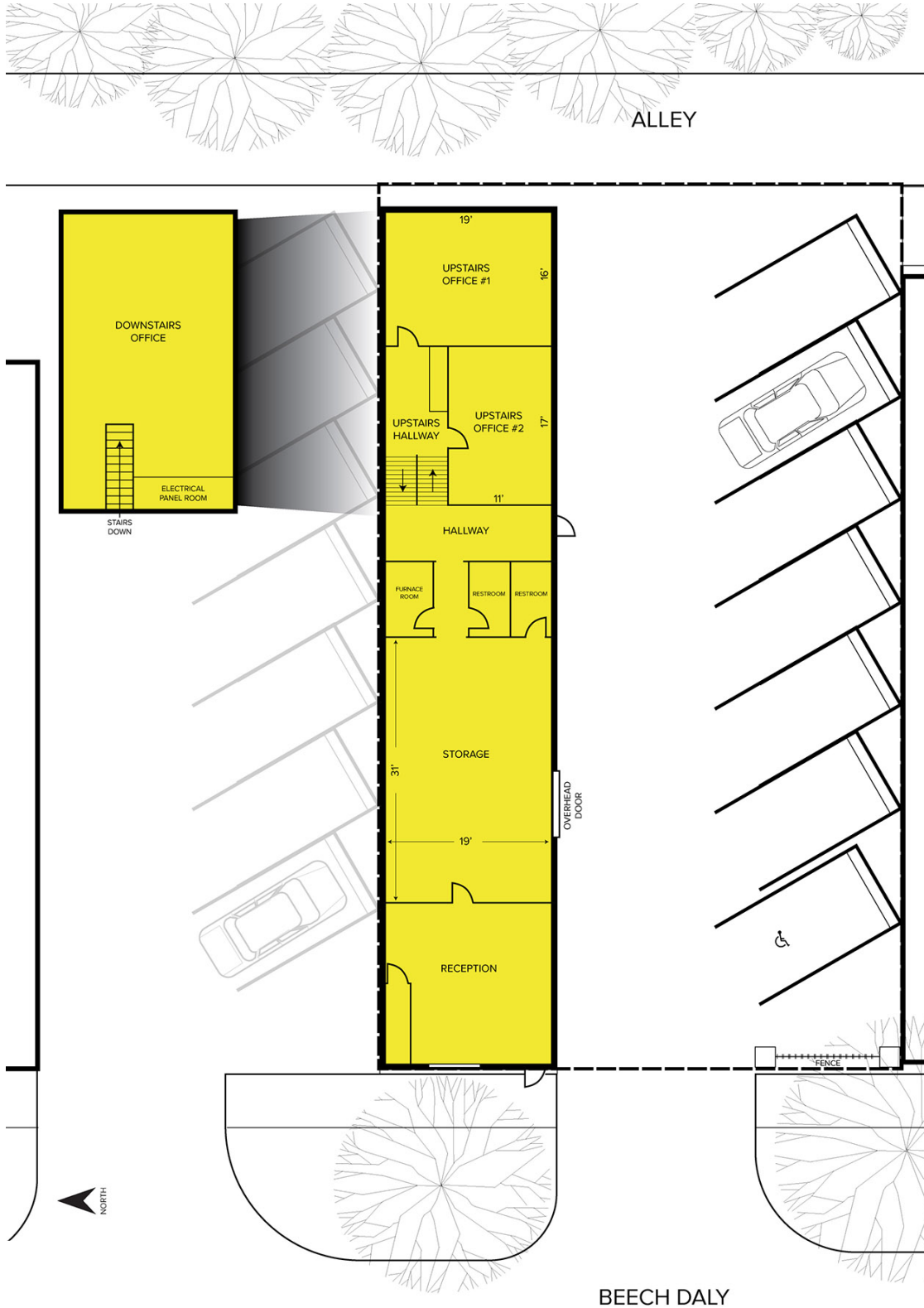
SIGNATURE ASSOCIATES
One Towne Square, Suite 1200
Southfield, MI 48076
www.signatureassociates.com

15116 Beech Daly Road – Redford, Michigan

Industrial For Sale

2,680
Square Feet
AVAILABLE

Site Plan



For more information, please contact:

JUSTIN GAFFREY
(248) 799 3143
jgaffrey@signatureassociates.com

CHRIS D'ANGELO
(248) 948 0109
cdangelo@signatureassociates.com

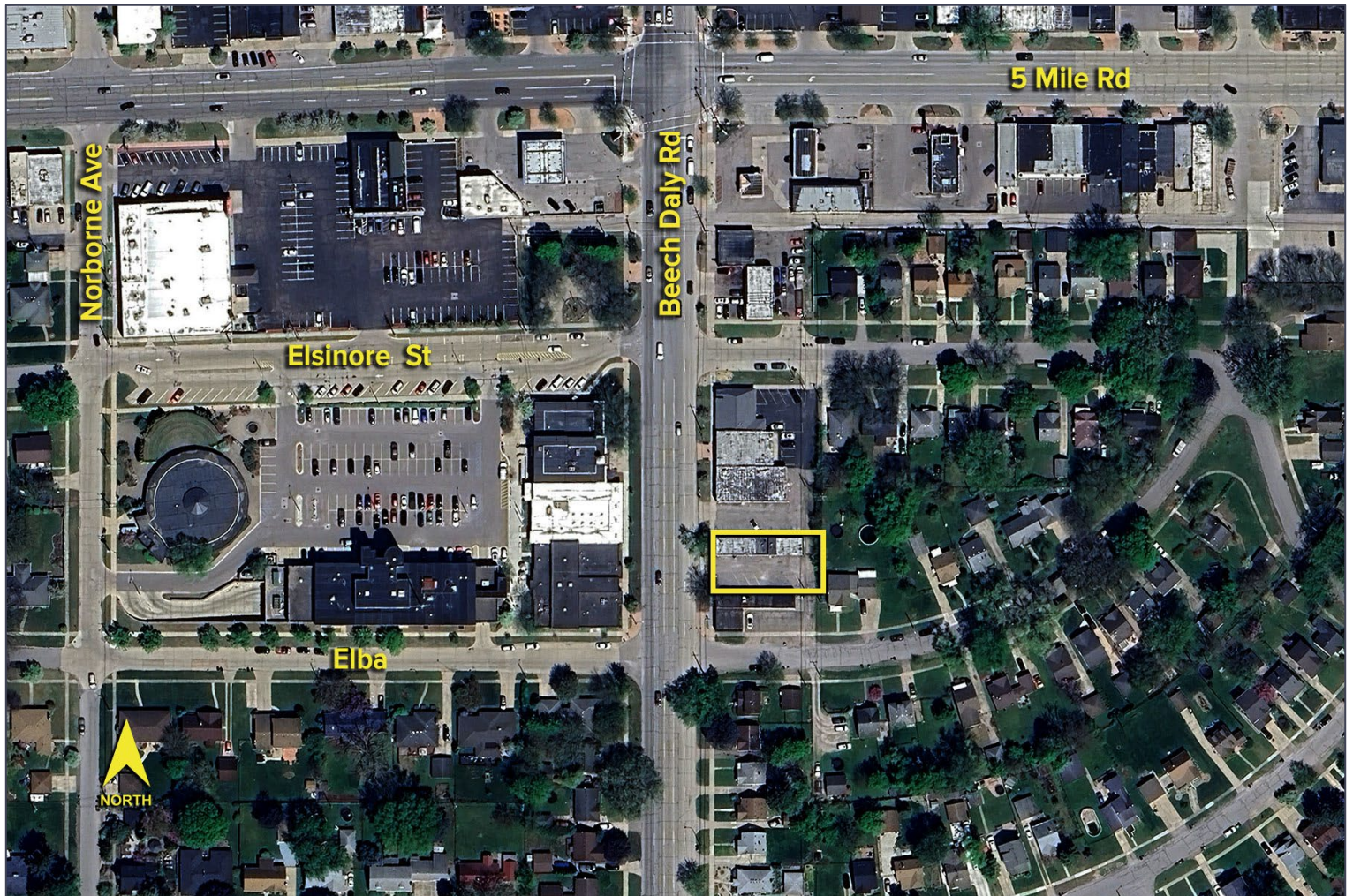
SIGNATURE ASSOCIATES
One Towne Square, Suite 1200
Southfield, MI 48076
www.signatureassociates.com

15116 Beech Daly Road – Redford, Michigan

Industrial For Sale

2,680
Square Feet
AVAILABLE

Aerial



For more information, please contact:

JUSTIN GAFFREY
(248) 799 3143
jgaffrey@signatureassociates.com

CHRIS D'ANGELO
(248) 948 0109
cdangelo@signatureassociates.com

SIGNATURE ASSOCIATES
One Towne Square, Suite 1200
Southfield, MI 48076
www.signatureassociates.com