

AVAILABLE FOR SALE AND/OR LEASE

# 720 E. Highland Road

Macedonia, Ohio 44056



## 146,250 SF on 6.35 Acres

- Divisible to 56,000 SF
- 7,000A / 480V / 3P
- 14 Docks / 8 Drive-ins
- Buss Duct / Air Lines



**146,250 SF**  
**FEATURE-RICH MANUFACTURING**  
**COMPLEX AVAILABLE**

# PROPERTY FEATURES



**146,250 SF**  
(Divisible)

TOTAL BUILDING SIZE

**6.35 ACRES**

TOTAL SITE SIZE

**NEGOTIABLE**

SALE PRICE

**128,830 SF**

WAREHOUSE SIZE

**17,420 SF**

OFFICE SIZE

**\$6.75/SF NNN**

LEASE RATE

## HIGHLIGHTS

- 146,250 square foot industrial complex with 17,420 square feet of office space and 128,830 square feet of warehouse / manufacturing space on 6.35 acres
- Minimum divisibility of 56,000 SF
- Eight (8) drive-in doors - 10'x12'; 10'x18'; 12'x14'; 14'x18'
- Fourteen (14) truck docks - six (6) internal and eight (8) external
- Manufacturing amenities including shop restroom/locker rooms, air line distribution, 2-ton and 3-ton crane, 7000A / 480V / 3P power with buss duct distribution throughout

## PROPERTY SPECIFICATIONS

TOTAL SF:	146,250 SF (Divisible to 56,000 SF)
PRODUCTION/ WAREHOUSE SF:	128,830 SF
OFFICE:	17,420 SF
CONSTRUCTED:	1982
CONSTRUCTION:	Block/Siding
LAND:	6.35 Acres
ROOF:	Built-up on Metal Deck
LIGHTING:	Fluorescent
HEAT:	Gas/Radiant Tube
AC:	HVAC - Office Only
SPRINKLER	100% Wet
CLEAR HEIGHT:	19'6"
COLUMN SPACING:	40' x 40'
CRANES:	Two (2) - 2-ton and 3-ton
DOCKS:	Fourteen (14) - six (6) internal and eight (8) external
DRIVE-IN DOORS:	Eight (8) - 10'x12'; 10'x18'; 12'x14'; 14'x18'
PARKING:	Approximately 100 spaces
POWER:	7000A / 480V / 3P
ZONING:	GI - General Industrial District
AIR LINES:	Yes
LOCKER ROOMS:	Yes
BUSS DUCT	Yes



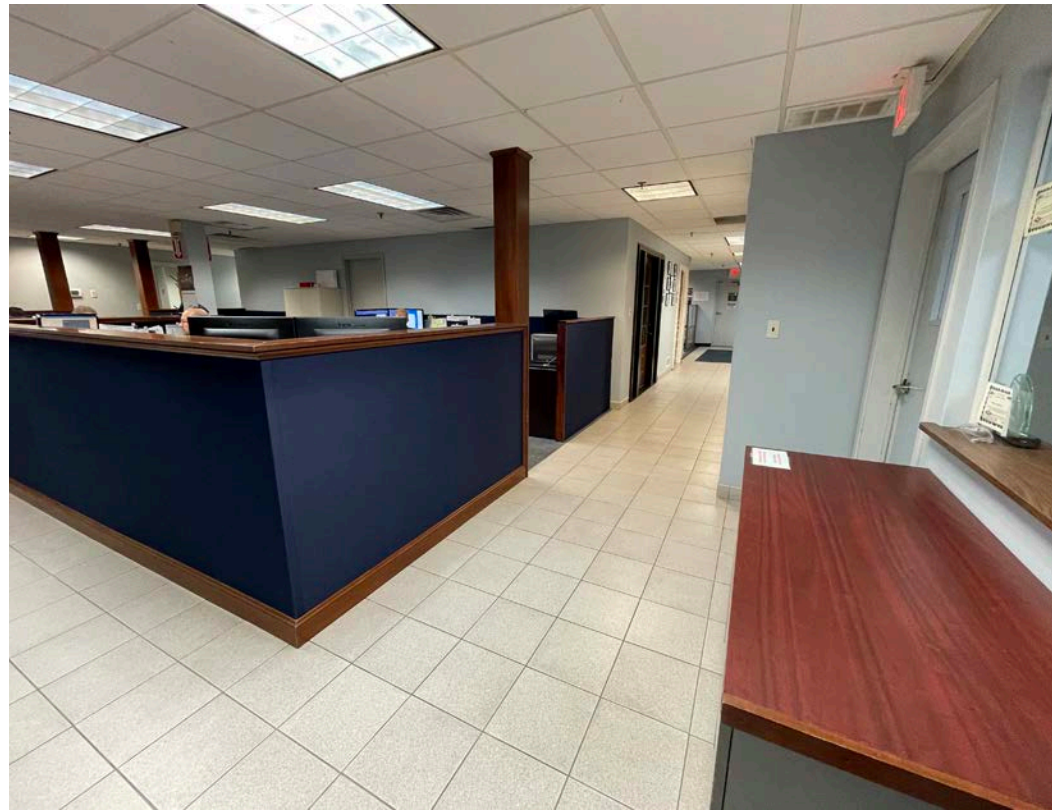
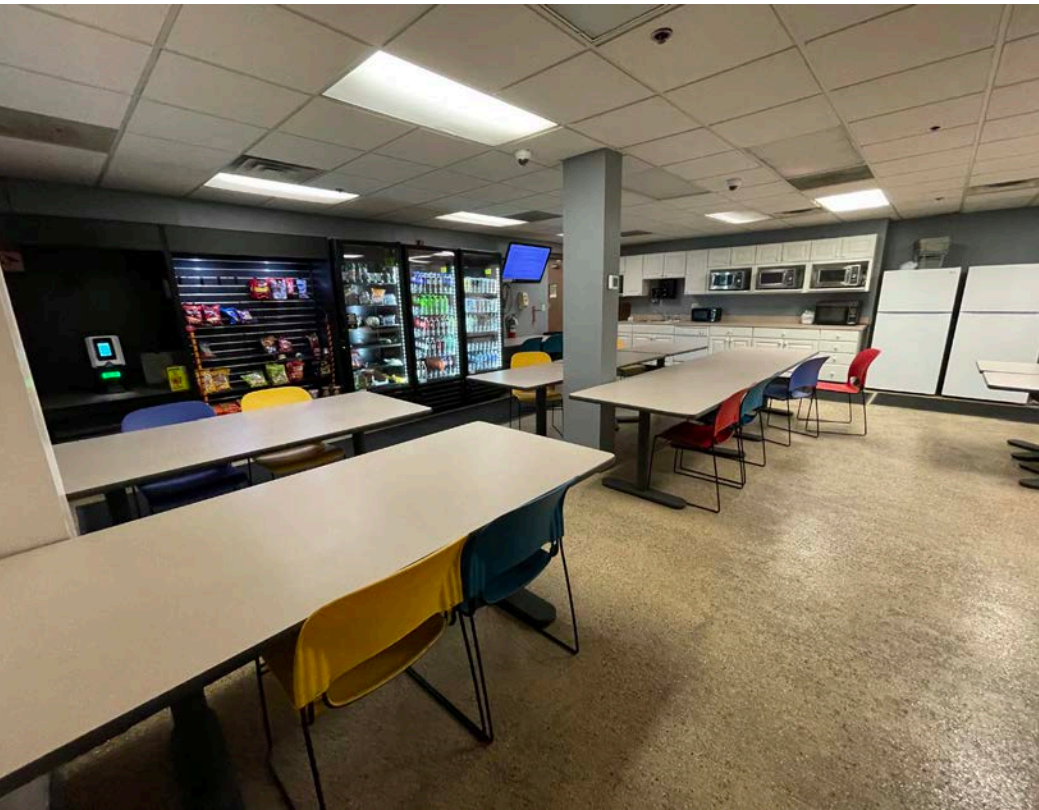
# AERIAL PHOTOS



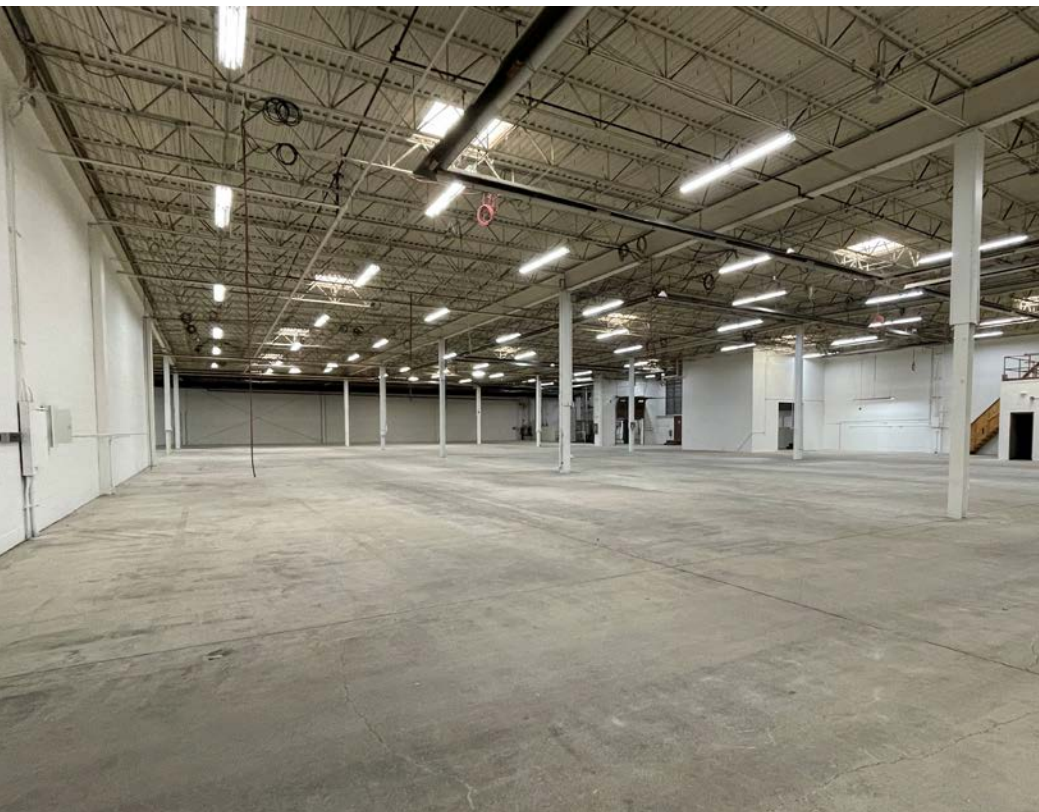
# EXTERIOR PHOTOS



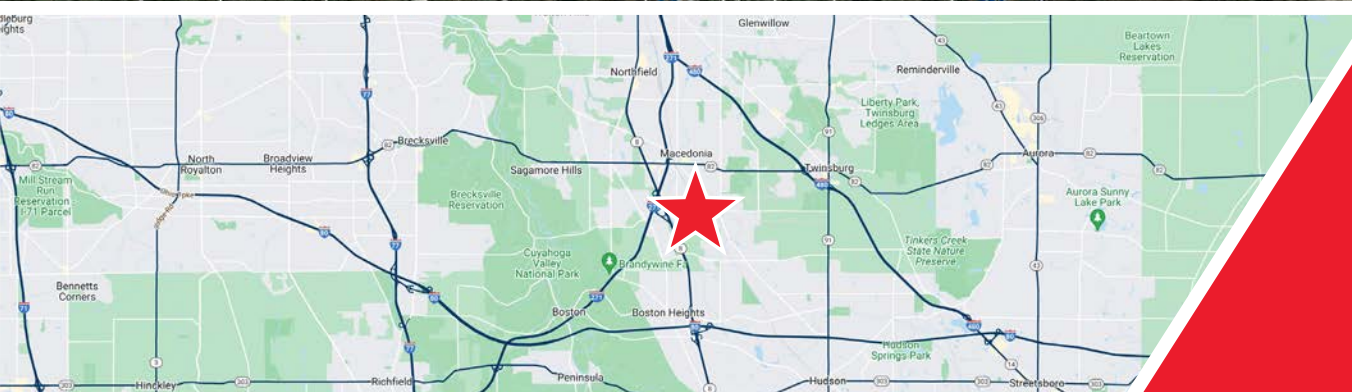
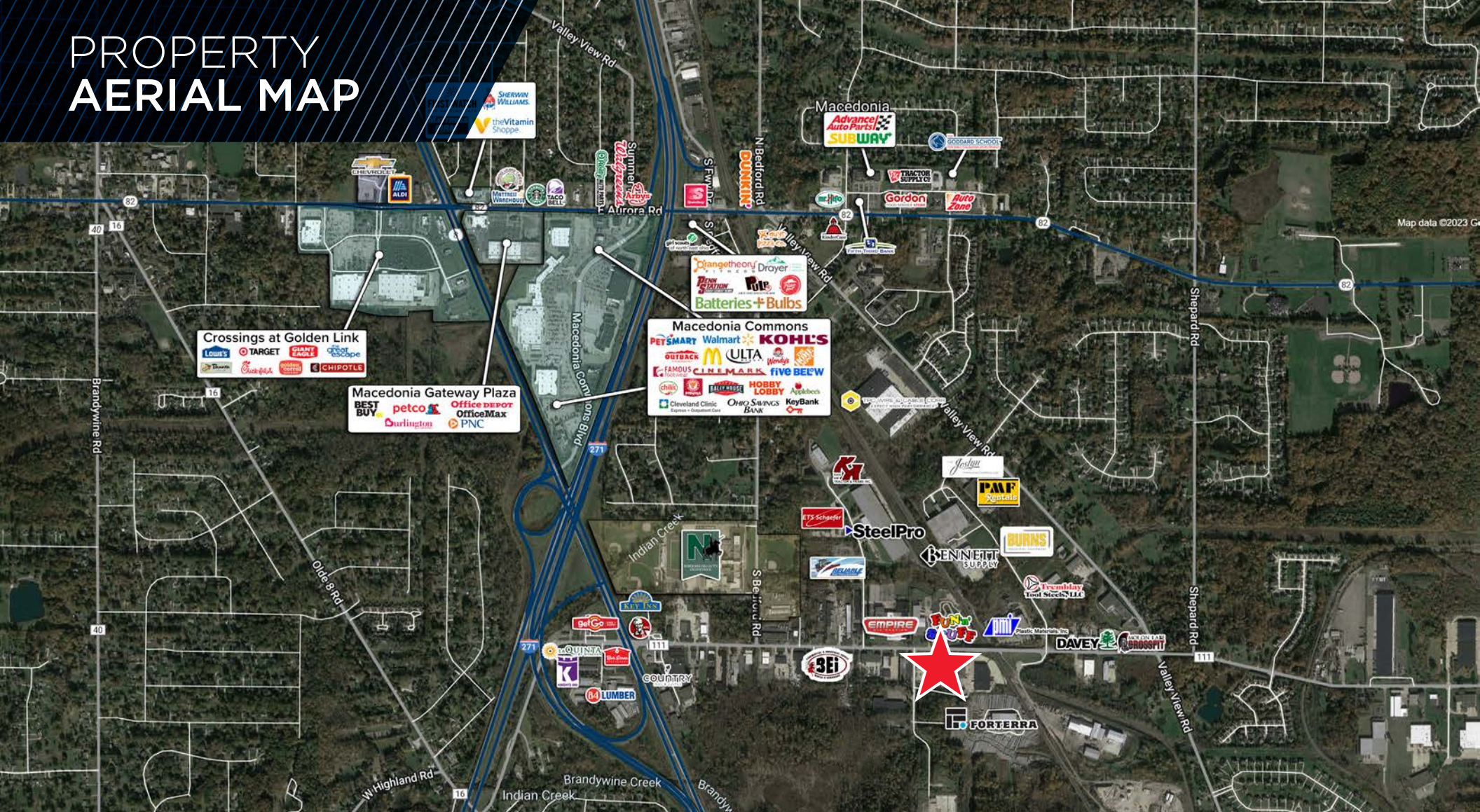
# OFFICE PHOTOS



# WAREHOUSE PHOTOS



# PROPERTY AERIAL MAP



Easy access  
to I-271 & I-480



**GEORGE J. POFOK, CCIM, SIOR**  
Principal  
+1 216 525 1469  
gpofok@crescorealestate.com

**ELIOT KIJEWski, SIOR**  
Principal  
+1 216 525 1487  
ekijewski@crescorealestate.com

**JIM KRIVANEK**  
Vice President  
+1 216 525 1498  
jkrivanek@crescorealestate.com

**COLE SORENSON**  
Senior Associate  
+1 216 525 1470  
csorensen@crescorealestate.com

*Independently Owned and Operated / A Member of the Cushman & Wakefield Alliance*

Cushman & Wakefield Copyright 2024. No warranty or representation, express or implied, is made to the accuracy or completeness of the information contained herein, and same is submitted subject to errors, omissions, change of price, rental or other conditions, withdrawal without notice, and to any special listing conditions imposed by the property owner(s). As applicable, we make no representation as to the condition of the property (or properties) in question. A licensee at Cushman & Wakefield | CRESCO may have an interest in the client entity offering this property for sale.

6100 Rockside Woods Blvd, Suite 200  
Cleveland, Ohio 44131  
Main +1 216 520 1200  
[crescorealestate.com](http://crescorealestate.com)