

SALE

LOT 4A HWY 47, HARDIN

Lot 4A Hwy 47 Hardin Hardin, MT 59034



SALE PRICE

\$85,000

Bruce Knudsen

(406) 698-8636

bruce@cbcmontana.com

©2023 Coldwell Banker. All Rights Reserved. Coldwell Banker Commercial® and the Coldwell Banker Commercial logos are trademarks of Coldwell Banker Real Estate LLC. The Coldwell Banker® System is comprised of company owned offices which are owned by a subsidiary of Anywhere Advisors LLC and franchised offices which are independently owned and operated. The Coldwell Banker System fully supports the principles of the Equal Opportunity Act.



**COLDWELL BANKER
COMMERCIAL**
CBS



OFFERING SUMMARY

Sale Price:	\$85,000
Lot Size:	35,719 SF

PROPERTY DESCRIPTION

This 35,719 square foot lot offers an excellent location with Hardin city services available, situated along Highway 47 and directly across from Love's Truck Stop. With great access to Interstate 90, this property is perfectly positioned for commercial development or investment. Priced at \$95,000, it presents a fantastic opportunity in a high-traffic area with easy connectivity to the surrounding region.

PROPERTY HIGHLIGHTS

- 35,719 Sq Ft Lot with Hardin City Services along Hwy 47.
- Across from Love's Truck Stop
- Great access to Interstate 90

Bruce Knudsen
(406) 698-8636
bruce@cbcmontana.com

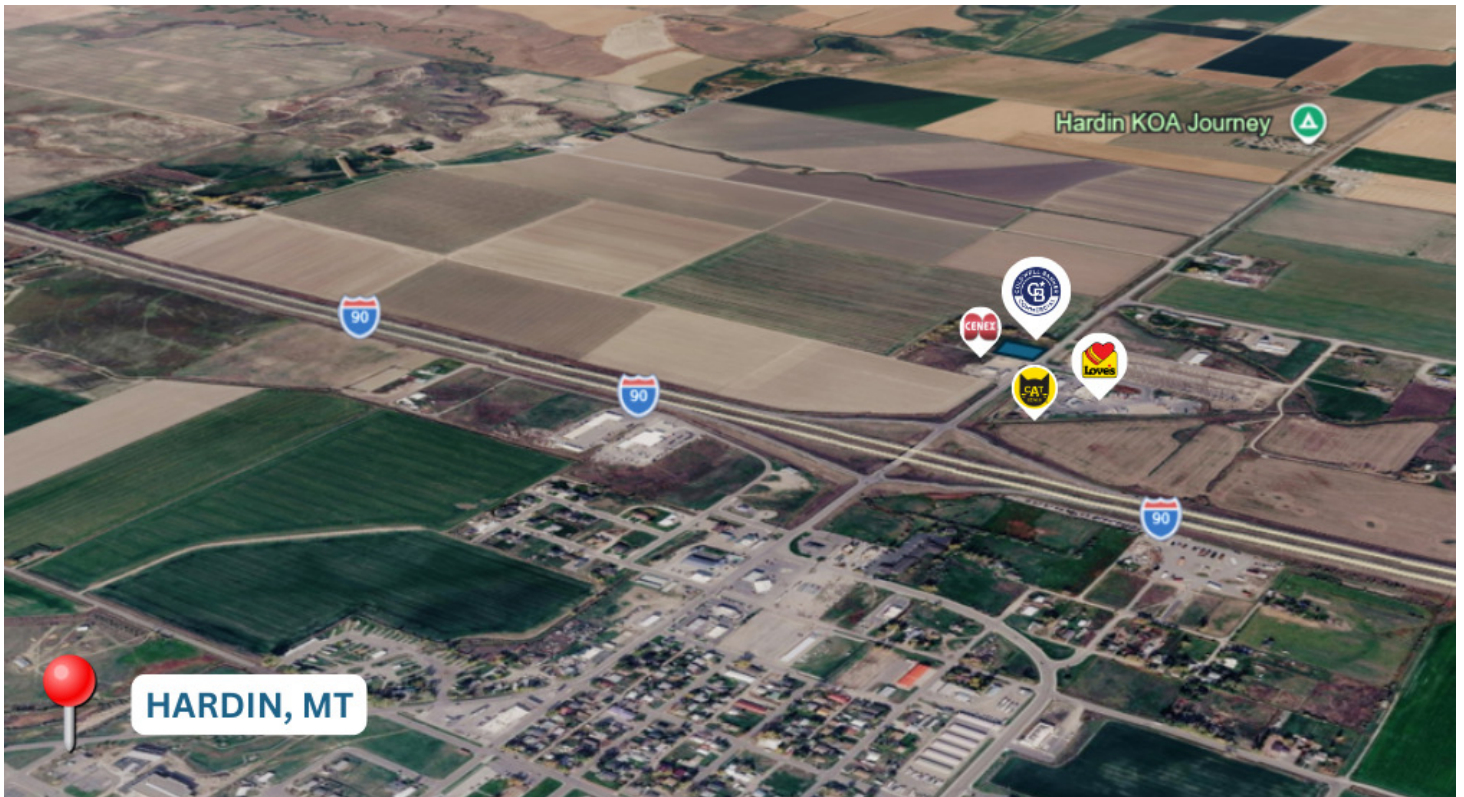


**COLDWELL BANKER
COMMERCIAL**
CBS

SALE

LOT 4A HWY 47

Hardin, MT 59034



Bruce Knudsen
(406) 698-8636
bruce@cbcmontana.com



**COLDWELL BANKER
COMMERCIAL**
CBS

SALE

LOT 4A HWY 47

Hardin, MT 59034



Bruce Knudsen
(406) 698-8636
bruce@cbcmontana.com

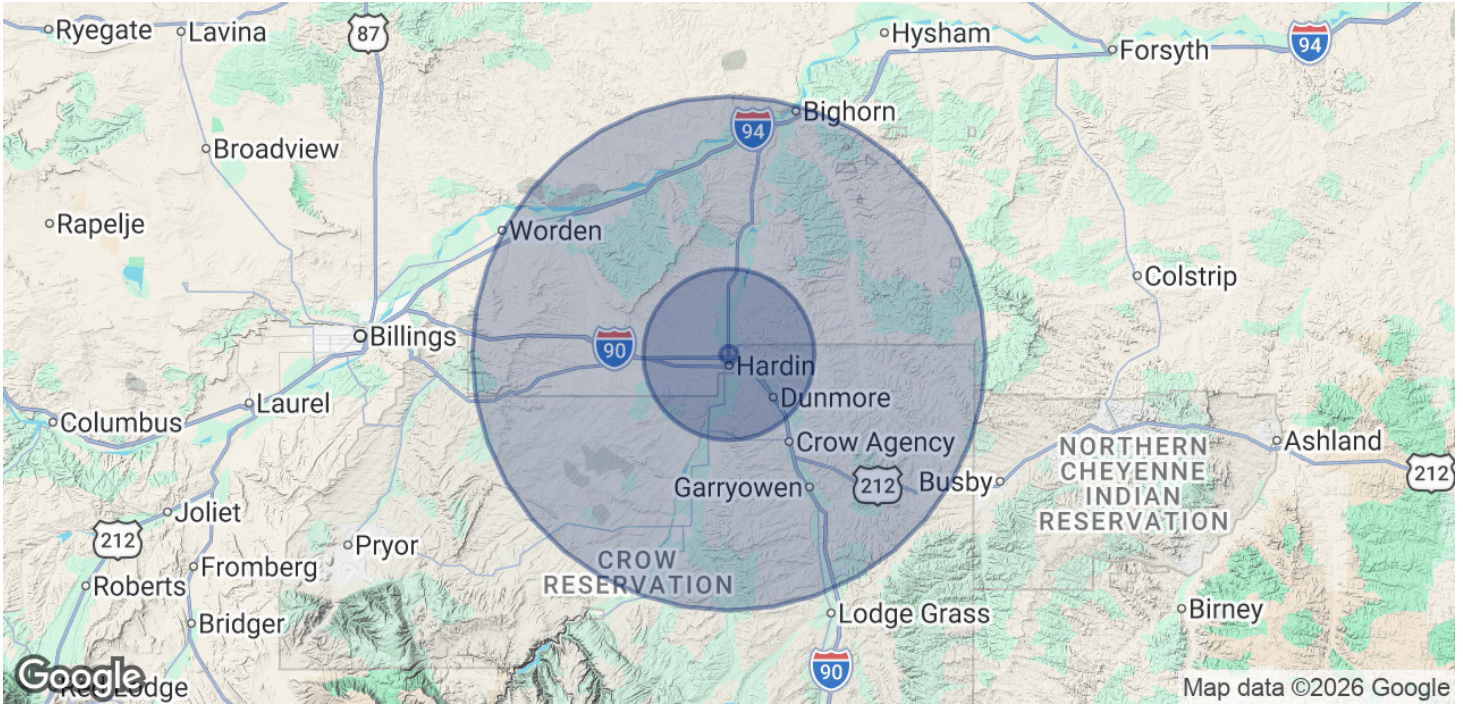


**COLDWELL BANKER
COMMERCIAL**
CBS

SALE

LOT 4A HWY 47, HARDIN

Lot 4A Hwy 47 Hardin Hardin, MT 59034



POPULATION	1 MILE	10 MILES	30 MILES
Total Population	851	5,088	9,529
Average Age	38	37	37
Average Age (Male)	36	35	36
Average Age (Female)	39	38	38

HOUSEHOLDS & INCOME	1 MILE	10 MILES	30 MILES
Total Households	289	1,681	3,106
# of Persons per HH	2.9	3	3.1
Average HH Income	\$72,750	\$69,433	\$70,321
Average House Value	\$187,986	\$188,431	\$234,456

2020 American Community Survey (ACS)

Bruce Knudsen
(406) 698-8636
bruce@cbcmontana.com



**COLDWELL BANKER
COMMERCIAL**
CBS

SALE

LOT 4A HWY 47

Hardin, MT 59034



BRUCE KNUDSEN

Commercial Sales Broker

bruce@cbcmontana.com

Direct: (406) 698-8636 | Cell: (406) 698-8636

PROFESSIONAL BACKGROUND

Bruce is a highly accomplished professional with a solid educational background. His career began at KPMG, where he worked as an auditor from March 1987 to September 1991, gaining valuable financial analysis skills. Bruce then transitioned to independent consulting, specializing in troubled debt workouts, expert witness work, and related consulting services until October 1993.

With an entrepreneurial spirit, Bruce embarked on various business ventures. From October 1993 to September 2003, he owned and operated a successful delivery company. Following that, he established his own tax preparation and accounting services firm, running it from September 2003 to May 2015.

In May 2015, Bruce took on a new challenge as Vice President and CEO of Bridger Steel Inc., leading the company until February 2022. Continuing his entrepreneurial journey, he has been the proprietor of SMART Steel in Lafayette, LA, since November 2021.

Bruce's career is a testament to his financial expertise, leadership, and ability to thrive in diverse business ventures. Alongside his professional achievements, he remains engaged in his community, having served as a past member of the Billings Catholic School Board.

MEMBERSHIPS

- Montana Association of Realtors
- National Association of Realtors

CBS

3135 Meadow View Dr.
Billings, MT 59102
406.656.2001

Bruce Knudsen
(406) 698-8636
bruce@cbcmontana.com



**COLDWELL BANKER
COMMERCIAL**
CBS