

REDUCED PRICE! FOR SALE OR LEASE

18513 EUCLID AVENUE | CLEVELAND, OHIO 44112

CBRE



**Flexible 2-Building Campus Designed
for Manufacturing & Distribution**

±265,010 SF

**DIVISIBLE
ON 12.07 AC**

PROPERTY OVERVIEW

18513 EUCLID AVENUE offers a rare opportunity to acquire two versatile industrial buildings totaling **±265,000 SF on 12.07 acres**, with visibility from bustling Euclid Avenue (25,309 VPD). This property is ideal for **owner-users** seeking a strategic location and great value, or **value-add investors** looking to capitalize on strong income potential.

Building A totals ±63,510 SF with 5 drive-ins, clear heights up to 24.5', and varying column spacing up to 60' x 60'. Fully renovated office space (±6,510 SF) complete in 2023 presents a modern professional environment

Building B consists of ±201,500 SF with 15 loading docks, 1 UPS dock, and 3 drive-ins. High ceiling clearance and wide bays provide maximum flexibility for a variety of uses. Recent upgrades include new dock motors and radiant tube / unit heaters. Both buildings feature new LED lighting for enhanced energy efficiency.

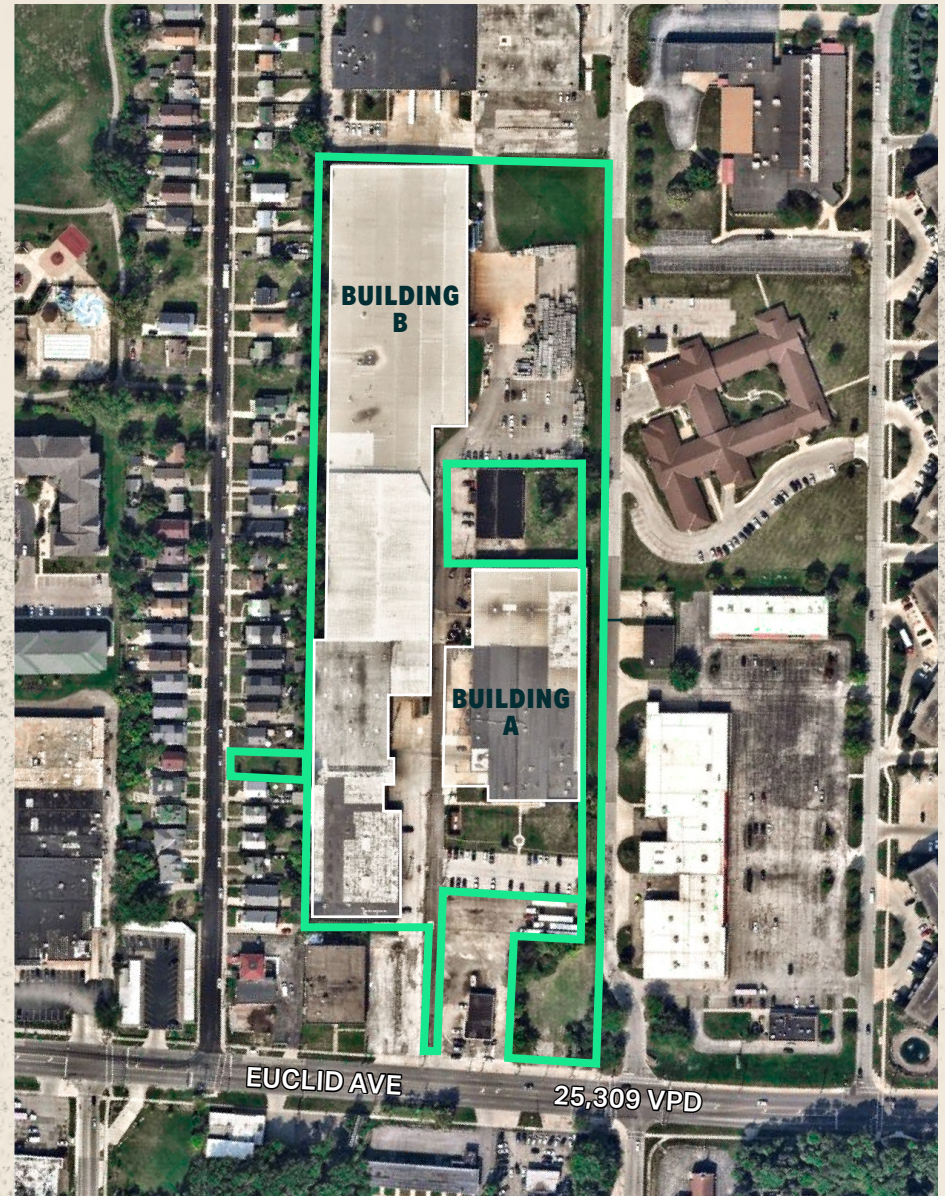
Key Features

- **Heavy Power:** 600V/5000A/3PH
- **Outdoor Yard Area:** Expand your operations with generous outdoor space.
- **Ample Parking:** Existing parking lots and excess land can accommodate your workforce and visitors with ease.
- **Multi-Tenant Potential:** Easily adapt the property to accommodate diverse users and footprints.
- **Excellent Access:** Close proximity to I-90, I-271, downtown Cleveland, and Cleveland Hopkins International Airport for seamless regional connectivity.
- **Public Transportation:** RTA bus stop at Euclid Ave & Catalpa for convenient employee access.

ASKING PRICE

\$5,650,000 (\$21.32/SF)

Lease Rate: Contact Listing Agent



Property Specs

±265,010
TOTAL SF

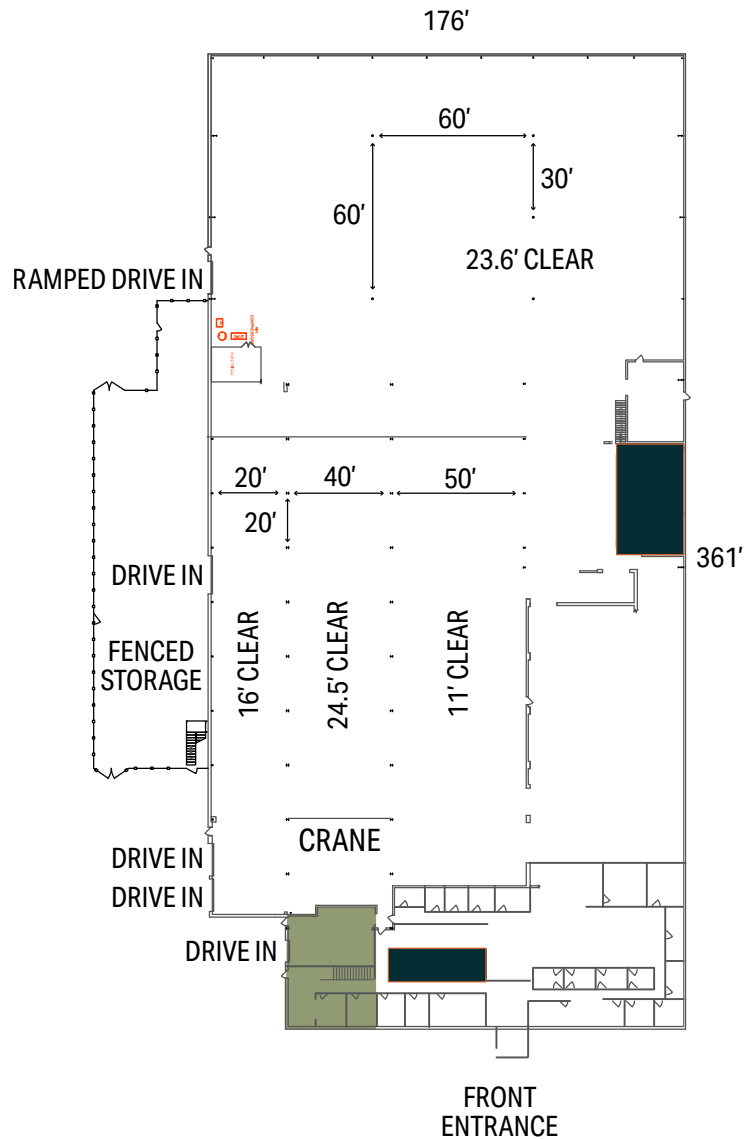
2
BUILDINGS

±12.07
TOTAL AC

7
PARCELS

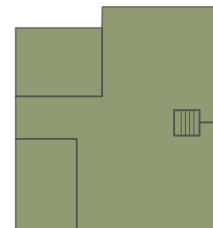
BUILDING A

±63,510 SF



 Restrooms

SECOND FLOOR OFFICE



±63,510 SF

WAREHOUSE | ±57,000

- 5-Ton Crane (ACCO Louden Floor-Operated, Traveling Mast Crane)
- 5 Drive-Ins
- Clear Height Varies (See Plan)
- Column Spacing Varies (See Plan)
- Heavy Power (600V / 2000A / 3PH)
- Radiant Tube & Unit Heaters
- NEW LED Lighting
- Compressed Airlines
- Locker Rooms

OFFICE | ±6,510 SF

- COMPLETE RENOVATION 2023 (Paint, Flooring, Lighting, & HVAC)
- 2 Conference Rooms
- Breakrooms / Kitchenette
- Multiple Private Offices

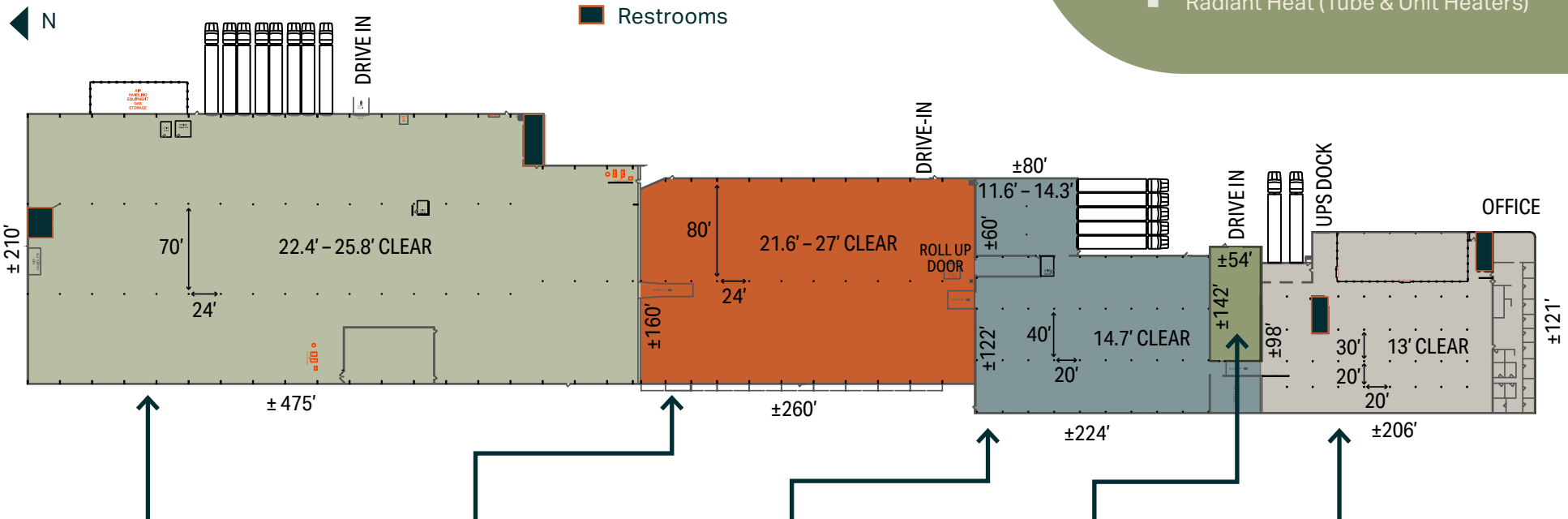
DISCLAIMER: All information on this page is subject to further verification. Floor plan is not to scale and measurements are estimates only.

BUILDING B

±201,500 SF

BUILDING HIGHLIGHTS

- 15 Docks + 1 UPS Dock + 3 Drive-Ins
- Heavy Power (600V / 3000A / 3PH)
- NEW LED Lighting Throughout
- Radiant Heat (Tube & Unit Heaters)



±96,000 SF

- 8 Docks (8'x10') with Bumpers, Seals, & Plates
- 1 Drive-In (14'x16')
- 22.4' - 25.8' Clear Height
- 24'x70' Column Spacing
- NEW Radiant Heaters
- Compressed Airlines
- Locker Rooms & Office
- 35'x70' Room with Drop Ceiling & Existing A/C Unit (Power Not Connected to Unit, Condition Unknown)

±41,600 SF

- Partially Racked (Drive-In Pallet Racking)
- 1 Drive-In
- 21.6' - 27' Clear Height
- 24'x80' Column Spacing
- Small Office

±28,300 SF

- 5 Docks (8'x10') with Bumpers, Seals, Plates, & NEW Motors
- 14.3' - 14.7' Clear Height
- 20'x40' Column Spacing
- Small Office

±7,600 SF

- Maintenance / Repair Shop
- 1 Drive-In
- 15' - 20.1' Clear Height
- Clear Span (54'x142')
- Trench Floor Drains

±28,000 SF

WAREHOUSE | ±24,000 SF

- 2 Docks (8'x10')
- 1 UPS Dock
- 13' Clear Height
- 20'x20' & 20'x30' Column Spacing
- Floor Drains

OFFICE | ±4,000 SF

- Breakroom & Kitchenette
- Training / Conference Room
- Private Offices

DISCLAIMER: All information on this page is subject to further verification. Floor plan is not to scale and measurements are estimates only.



BUILDING A: FRONT EXTERIOR



BUILDING B: REAR WAREHOUSE



BUILDING B: REAR WAREHOUSE LOADING DOCKS



BUILDING A: FRONT LOBBY



BUILDING A: KITCHENETTE



BUILDING B: MIDDLE WAREHOUSE RACKING



BUILDING A: KITCHENETTE



BUILDING A: CRANED MANUFACTURING



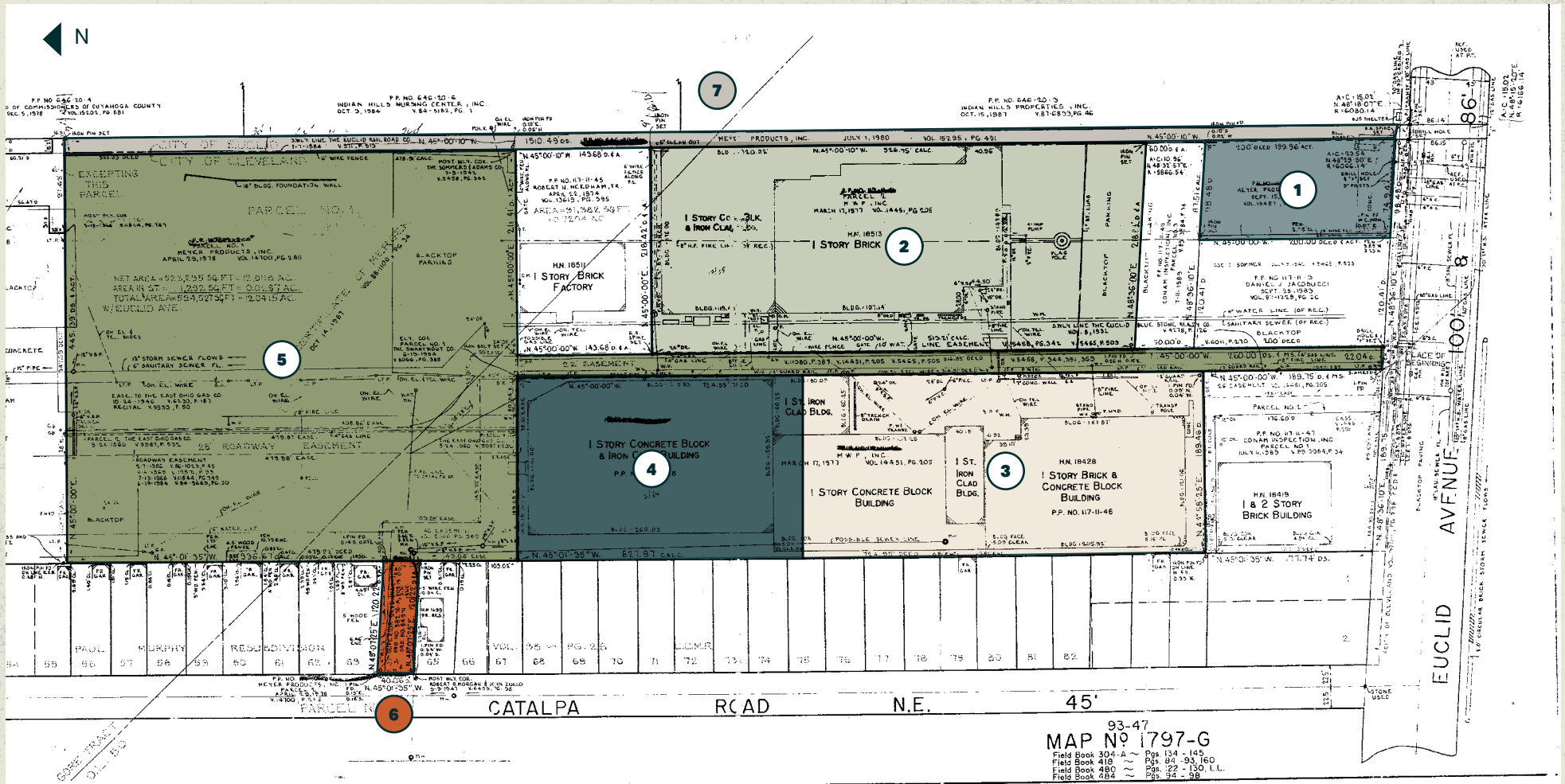
BUILDING B: SHOP / MAINTENANCE

SITE PLAN

**±12.07
TOTAL AC**

#	PARCEL NUMBER	ACREAGE	ZONING
1	11711002	±0.45 AC	GR-D2 General Retail
2	11711001	±2.53 AC	GI-B3 General Industry
3	11711046	±1.84 AC	GI-B3 General Industry
4	11711048	±1.32 AC	GI-B3 General Industry
5	11711004	±5.19 AC	GI-B3 General Industry
6	117110021	±0.11 AC	2F-B1 Two Family Residential
7	64620005	±0.525 AC	U4 Local Retail or Wholesale

DISCLAIMER: Parcel acreage is subject to further verification.



AREA MAP

2025 Area Demographics 5 Mile Radius

241,393

POPULATION

108,550

HOUSEHOLDS

\$85,115

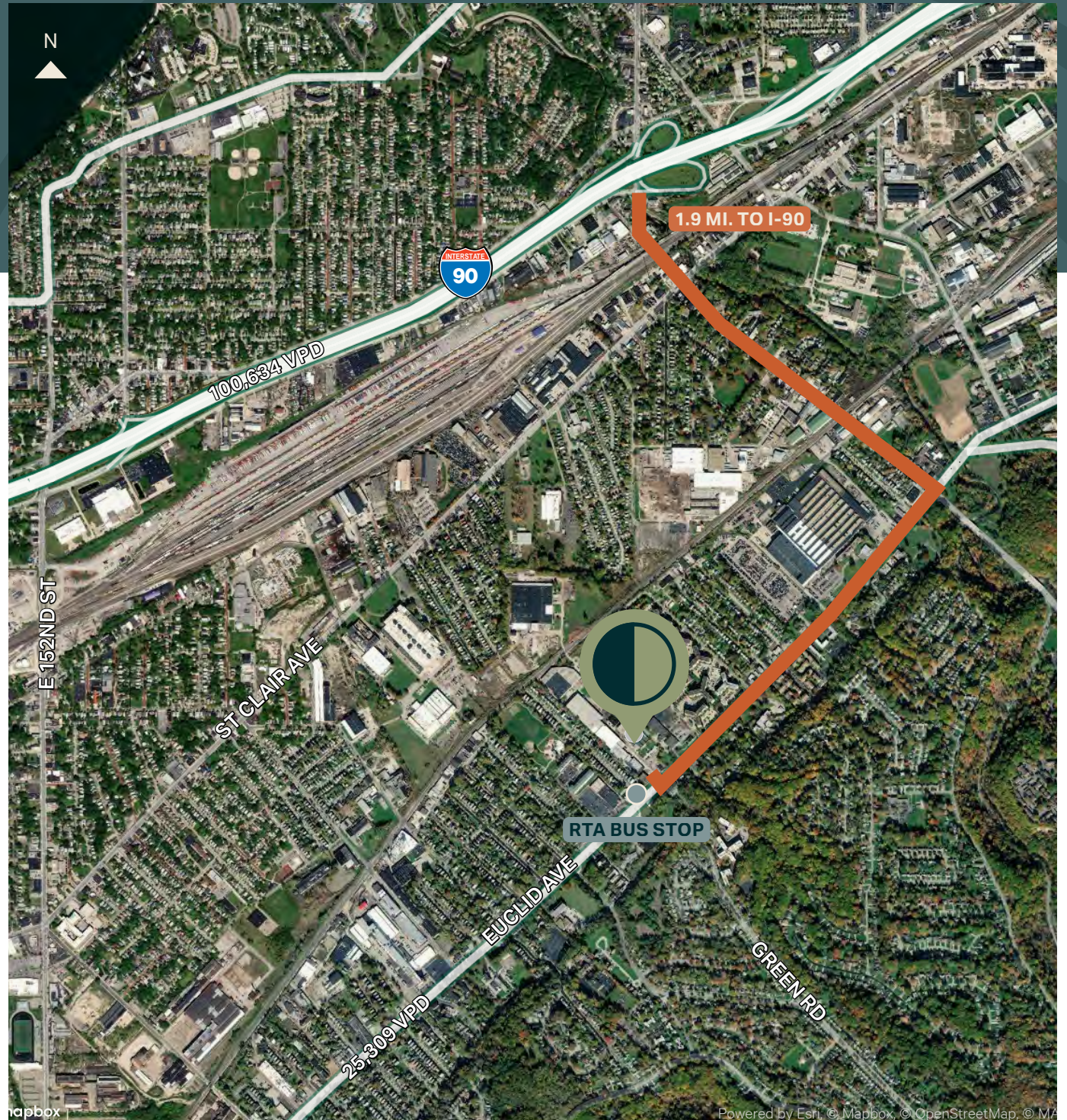
AVG. HOUSEHOLD INCOME

\$175,341

MEDIAN HOUSING VALUE

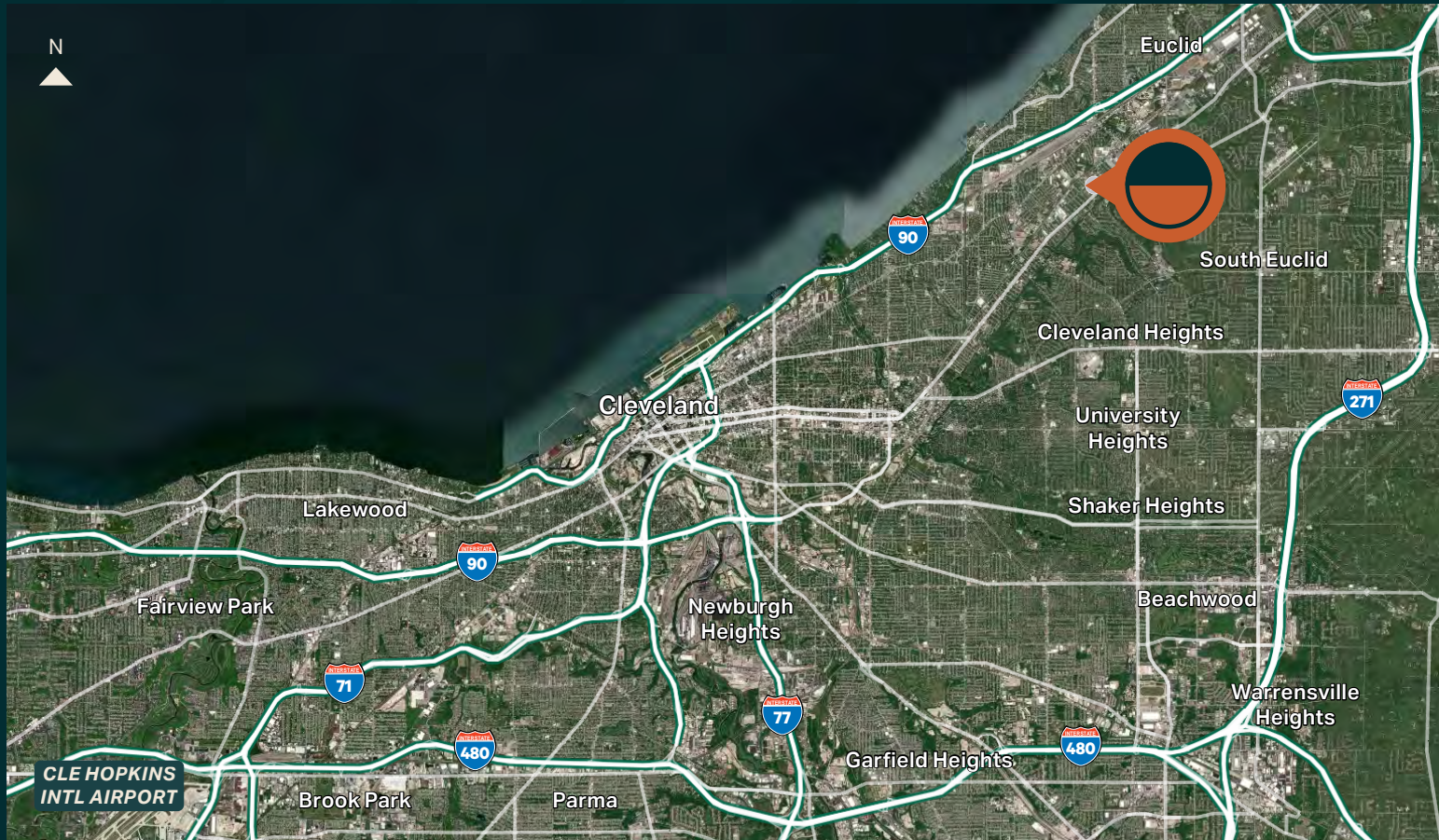
96,347

EMPLOYEES



AVAILABLE FOR SALE OR LEASE

18513 EUCLID AVENUE | CLEVELAND, OHIO 44112



Proximity to Major Highways & Locations

1.9
MILES TO I-90

6
MILES TO I-271

12.1
MILES TO I-490/I-77

13.8
MILES TO I-490/I-71
INTERCHANGE

11
MILES TO DOWNTOWN
CLEVELAND

22
MILES TO CLE-HOPKINS
INTL. AIRPORT

JENNA GAUNTNER

Vice President

+1 216 704 4469

jenna.gauntner@cbre.com

CBRE, INC.

950 Main Avenue

Suite 800

Cleveland, Ohio 44113

© 2026 CBRE, Inc. All rights reserved. This information has been obtained from sources believed reliable but has not been verified for accuracy or completeness. CBRE, Inc. makes no guarantee, representation or warranty and accepts no responsibility or liability as to the accuracy, completeness, or reliability of the information contained herein. You should conduct a careful, independent investigation of the property and verify all information. Any reliance on this information is solely at your own risk. CBRE and the CBRE logo are service marks of CBRE, Inc. All other marks displayed on this document are the property of their respective owners, and the use of such marks does not imply any affiliation with or endorsement of CBRE. Photos herein are the property of their respective owners. Use of these images without the express written consent of the owner is prohibited.

CBRE