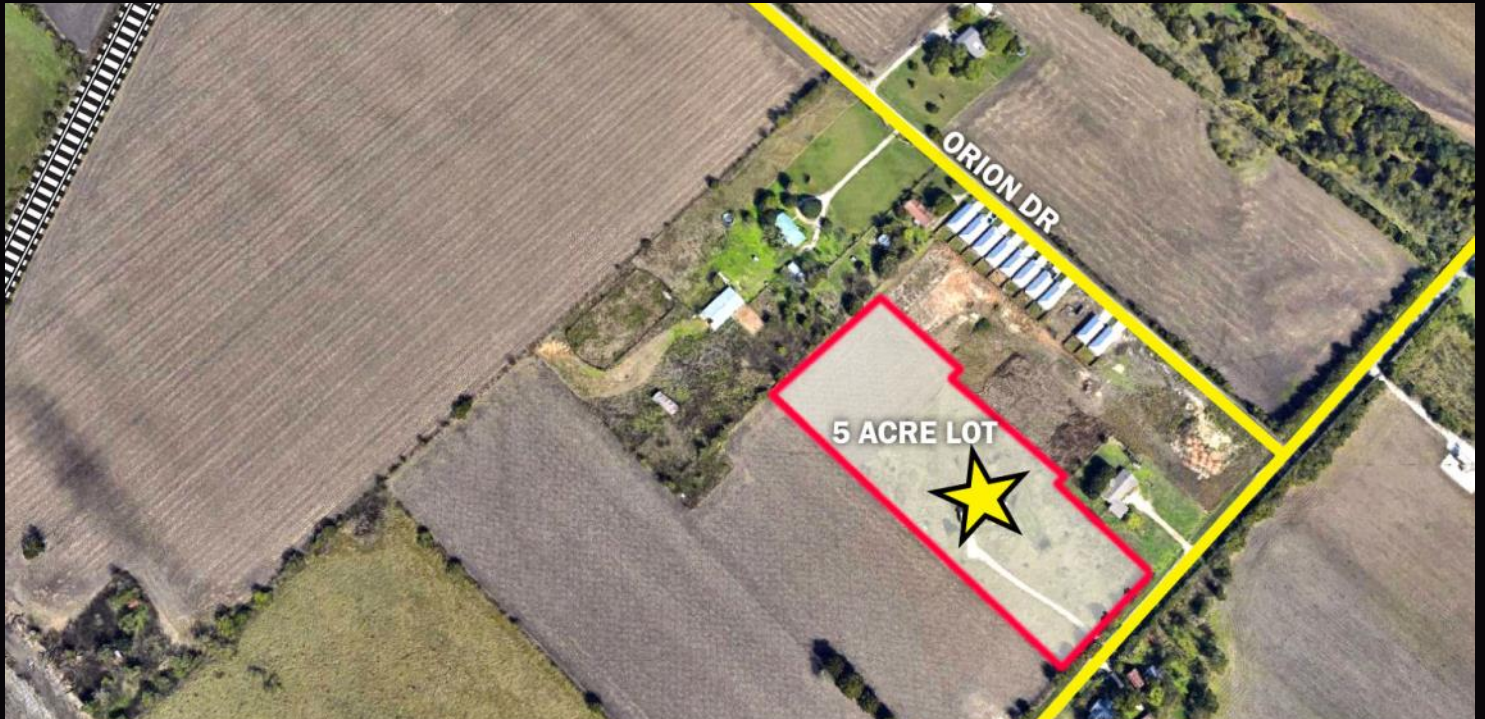


2841 & 0 GOODWIN LN | NEW BRAUNFELS, TX 78130



MLS# 391137 | 5 +/- ACRES

This leveled 5+/- Acre commercial unimproved lot is a great find. APD zoning with 1-mile proximity to IH 35 and Creekside Shopping Center make this location an ideal for establishing a private country club, golf course, church/place of religious assembly, feed mills, parks, and other agriculture or community home use.

Sale includes land and residential building on property.



**EDWARDS
COMMERCIAL
REAL ESTATE**

D. LEE EDWARDS

Broker/Owner
Edwards Commercial Real Estate
1111 N. Walnut Ave.
New Braunfels, TX 78130
Cell: 830-708-2319
Office: 830-620-7653
dlee@edwardscre.com