

savills

RETAIL

RETAIL

RETAIL

RETAIL

167

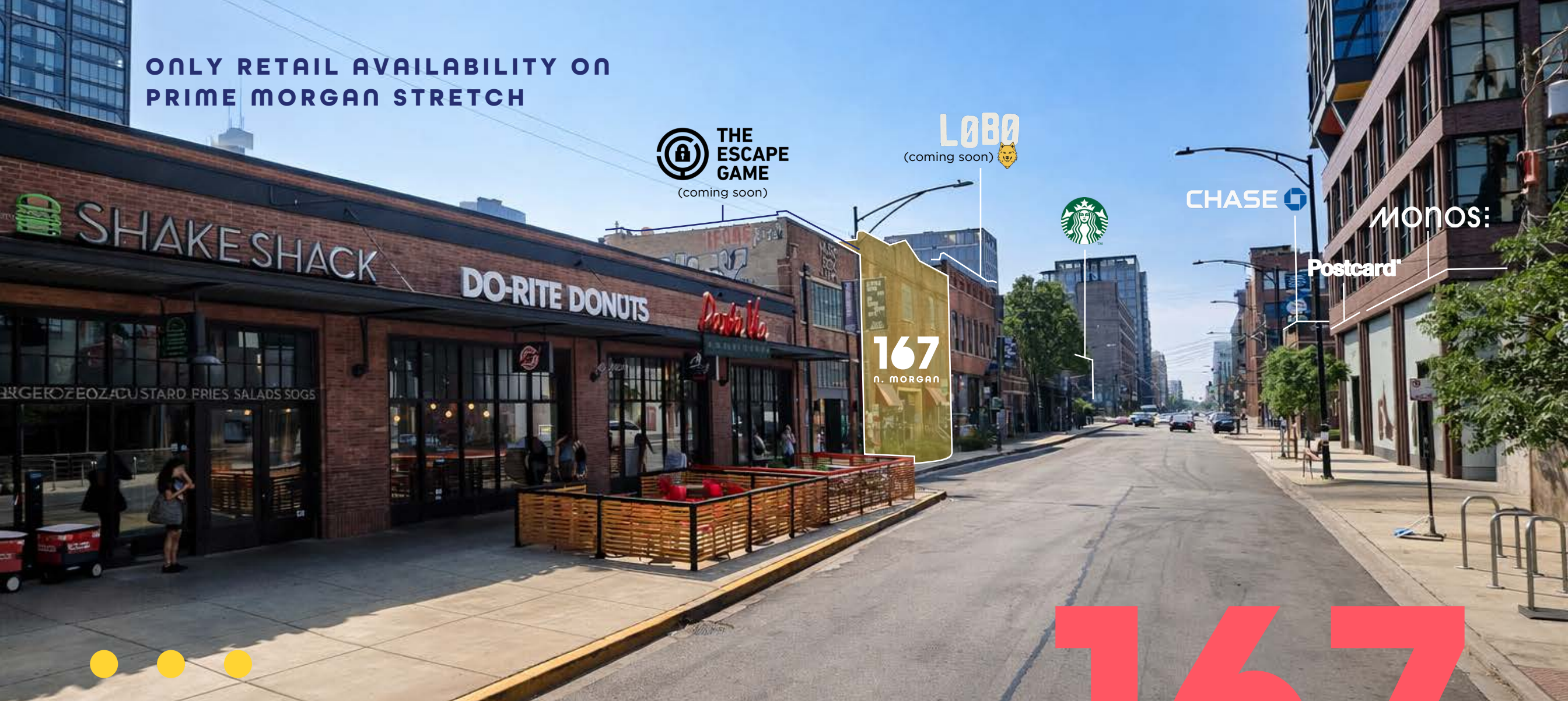
n. MORGAN

FULTON MARKET | CHICAGO

RETAIL OR OFFICE
OPPORTUNITIES FOR LEASE



ONLY RETAIL AVAILABILITY ON
PRIME MORGAN STRETCH



THE OPPORTUNITY

167 North Morgan represents a freestanding building opportunity in the heart of the West Loop trade area. Steps from the Morgan CTA station, this property offers unmatched visibility and flexibility.

167
n. morgan

OPTION

A

SINGLE TENANT

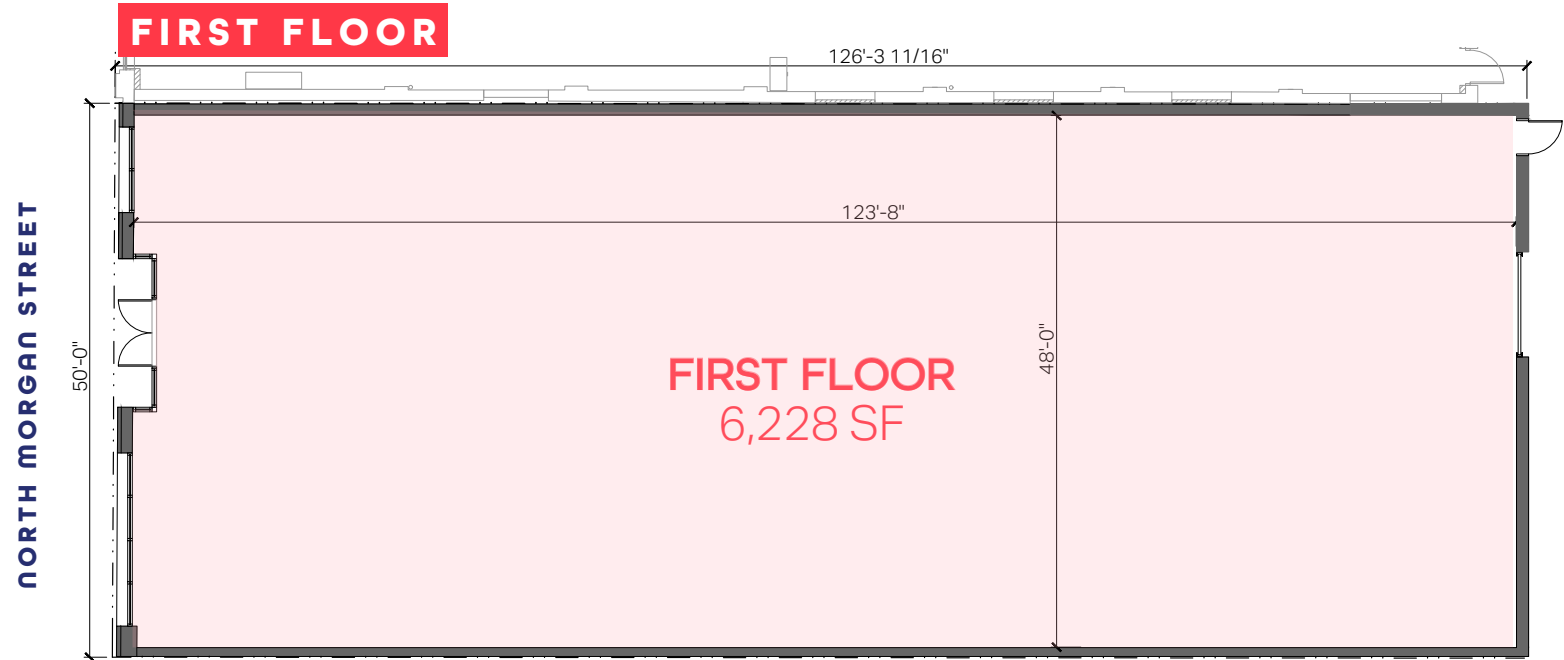
6,228 -12,500 SF

50 feet of Morgan
Street Frontage

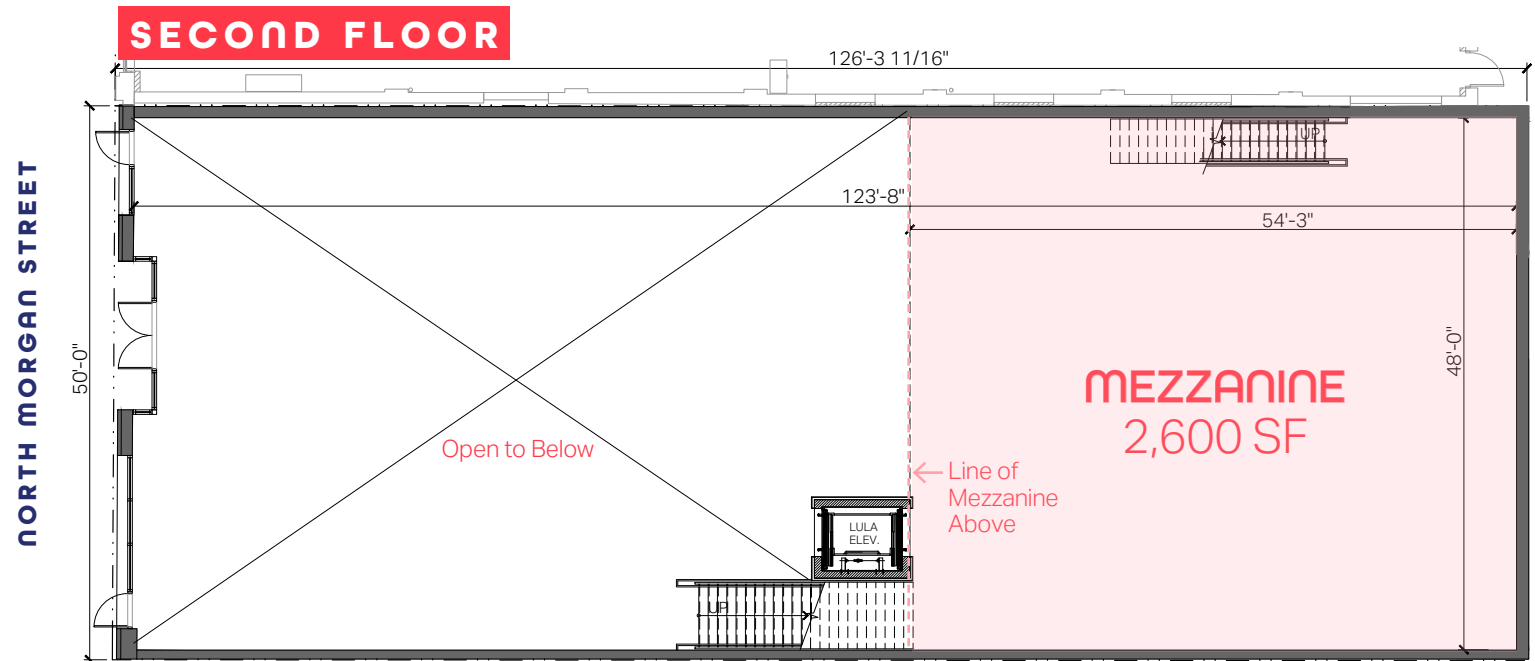
33' Ceiling Heights

Option to Add Mezzanine

FIRST FLOOR



SECOND FLOOR



Option to Add Mezzanine or Full Second Floor (2,600 - 6,250 SF)



OPTION

B

MULTI TENANT

Retail A

1st Floor: 3,828 SF

Retail B

1st Floor: 1,410 SF

Retail C

1st Floor: 443 SF
2nd Floor: 6,300 SF
Total: 6,743 SF

Morgan Street Frontage

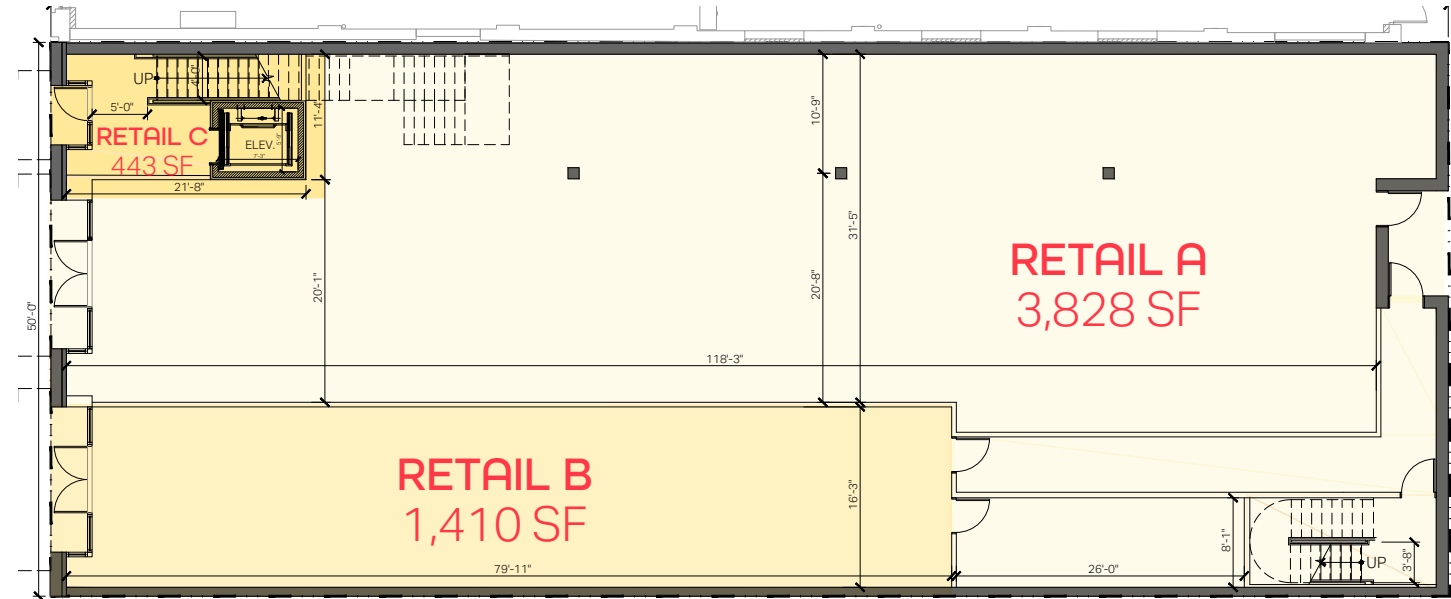
Retail A: 20'-1"
Retail B: 16'-3"
Retail C: 11'-4"

Ceiling Heights

1st Floor: 20'-5"
2nd Floor: 13'-4"

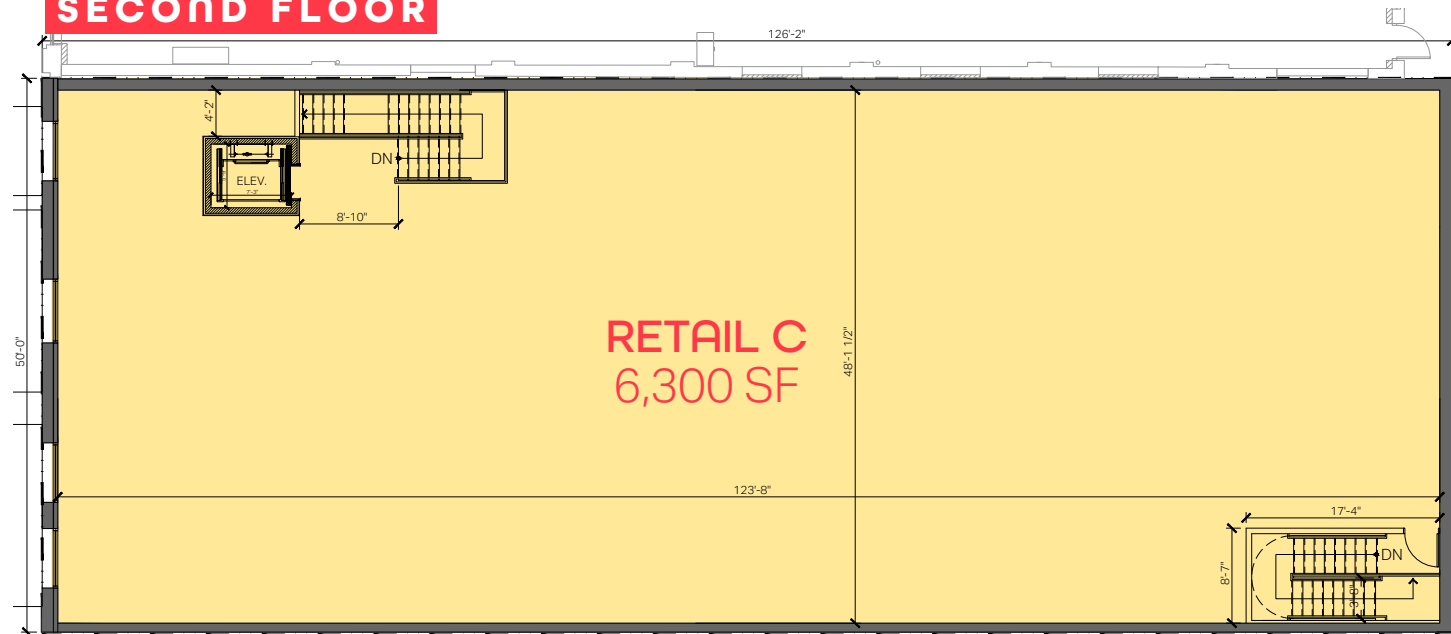
FIRST FLOOR

NORTH MORGAN STREET



SECOND FLOOR

NORTH MORGAN STREET



DEMOGRAPHICS

(WITHIN 1 MILE)

66,832

POPULATION

301,238

DAYTIME POPULATION

\$189,508

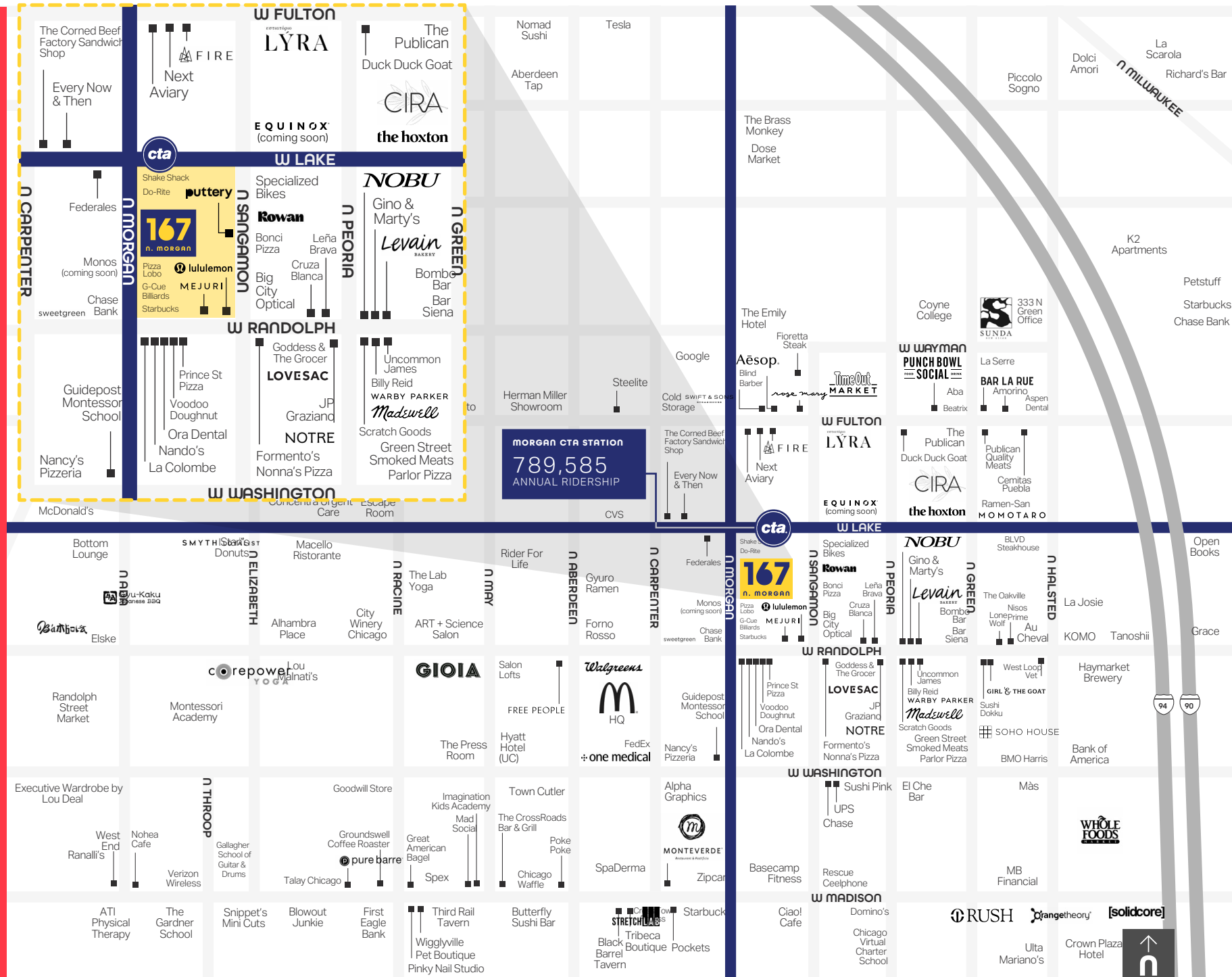
AVERAGE HH INCOME

33.7

MEDIAN AGE

\$2.1B

ANNUAL RETAIL + F&B SALES



167

N. MORGAN

RETAIL

THE ESCAPE GAME

RETAIL

RETAIL

RETAIL

L0B0

**PHILLIP
GOLDING**

Executive Managing Director
+1 312 404 6673
pgolding@savills.us

**KIMBERLY
WISKUP**

Corporate Managing Director
+1 312 595 2917
kwiskup@savills.us



© 2026 Savills. All rights reserved. The information contained in this communication has been obtained from a variety of sources believed to be reliable but has not been verified. NO WARRANTY OR REPRESENTATION, EXPRESS OR IMPLIED, IS MADE AS TO THE CONDITION OF THE PROPERTY OR ACCURACY OR COMPLETENESS OF THE INFORMATION CONTAINED HEREIN AND SAME IS SUBMITTED SUBJECT TO ERRORS, OMISSIONS, CHANGE OF PRICE, RENTAL OR OTHER CONDITIONS, WITHDRAWAL WITHOUT NOTICE AND TO ANY SPECIFIC CONDITIONS IMPOSED BY THE PROPERTY OWNER OR LESSOR.