



Colliers



FOR LEASE

RATE: \$25 PSF

Contact:

James Bakker, ccim

Vice President
+1 843 813 5557
james.bakker@colliers.com

Justin Ross

Vice President
+1 301 538 3540
justin.ross@colliers.com

Maddy Stout

Brokerage Associate
+1 843 720 7503
maddy.stout@colliers.com

Colliers | South Carolina

960 Morrison Drive, Suite 400
Charleston, SC 29403
+1 843 727 1200

±3,400-SF Retail Opportunity in a New Mixed-Use Development

2215 Central Avenue | Summerville, SC

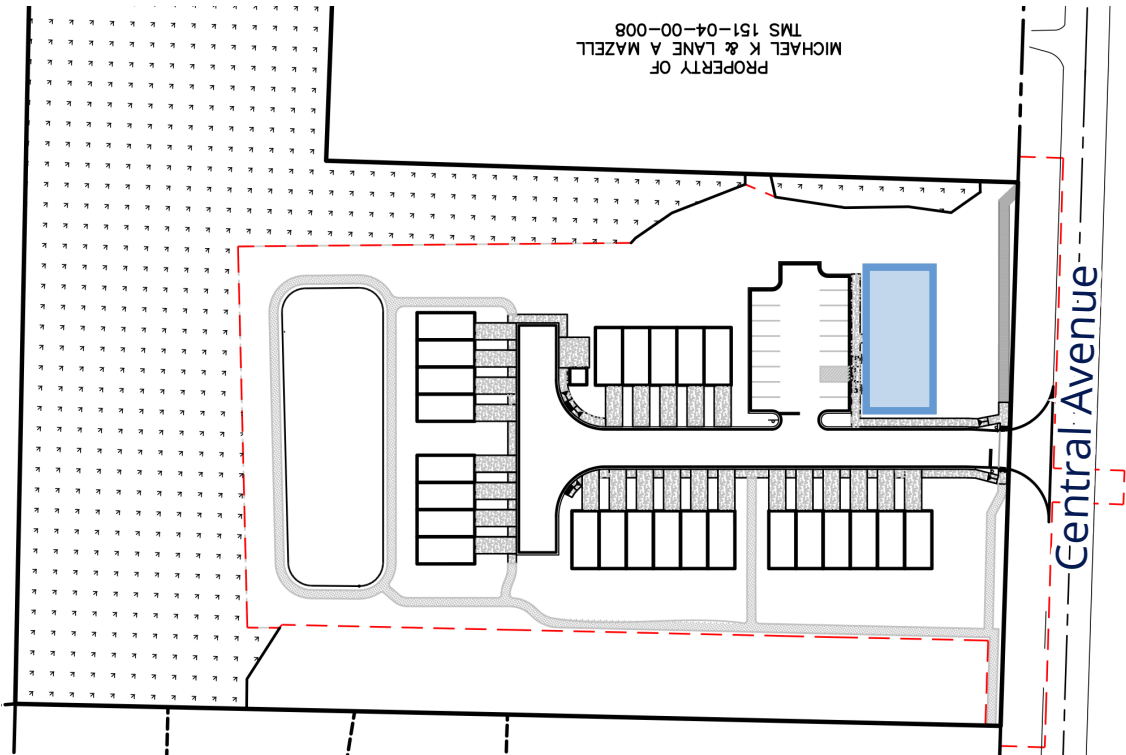
2215 Central Avenue offers a ±3,400-SF retail opportunity serving as the sole commercial anchor for a new 25-townhome residential development in Summerville. The space features prominent Central Avenue frontage, surface parking and a built-in customer base from day one.

The site provides convenient access to I-26, I-526 and Charleston International Airport, positioning tenants within minutes of one of Charleston metro's fastest-growing submarkets and a daytime population exceeding 25,000 within three miles.

Accelerating success.

For Lease | 2215 Central Ave

Property Overview



Property Details

Address:	2215 Central Avenue
Location:	Summerville, SC 29483
Improvements:	New construction, mixed-use development
Parking:	Surface parking
Rentable Area - Retail:	±3,400 SF
Asking Rate:	\$25.00 PSF NNN



Interstate 26
7.2 Miles



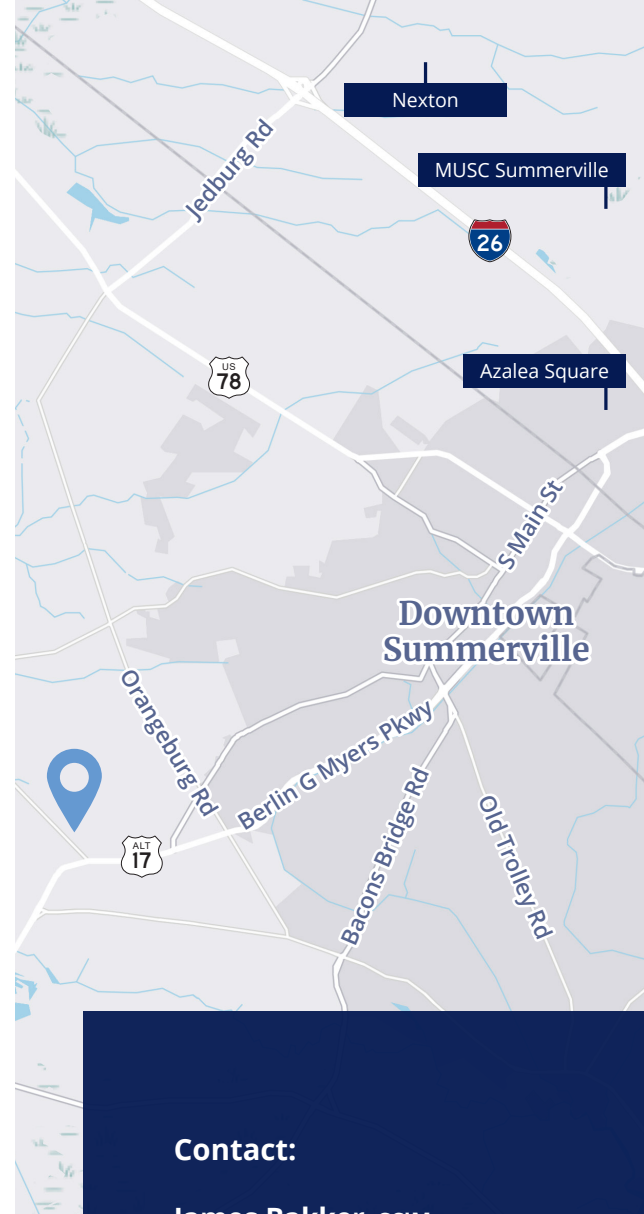
Interstate 526
16 Miles



CHS Int'l Airport
15.9 miles

Location Details

- Downtown Summerville** 9 min
- Summer's Corner** 7 min
- Azalea Square** 16 min
- Nexton** 18 min
- MUSC Health Summerville** 15 min
- Cane Bay** 31 min
- Camp Hall** 29 min
- Downtown Charleston** 35 min



Contact:

James Bakker, CCIM
Vice President
+1 843 813 5557
james.bakker@colliers.com

Justin Ross
Vice President
+1 301 538 3540
justin.ross@colliers.com

Maddy Stout
Brokerage Associate
+1 843 720 7503
maddy.stout@colliers.com
