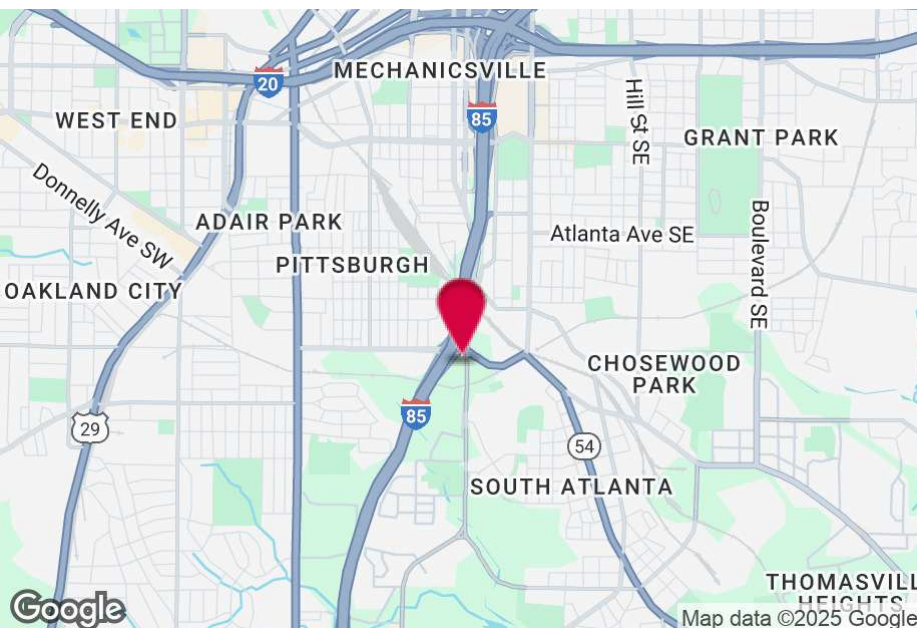


# FOR LEASE

## 1269 PRYOR ROAD

Atlanta, GA 30315

26,000± SF WAREHOUSE AVAILABLE



### PROPERTY HIGHLIGHTS

- 2,000+/- SF Office Space
- 4 Dock High Doors
- 600 Amps, 480/277 Volts, 3 Phase Power
- Industrial Zoning
- Easy Access to Downtown Connector
- University Ave. Diamond Interchange 500' From Building

### BUILDING SUMMARY

Building Size	26,000 SF
Zoning	I2-C

Steve Ratchford, SIOR, CCIM  
Senior Vice President  
sratchford@kingindustrial.com  
404.942.2003

Avani Patel, CPA (Inactive), MBA  
Associate  
apatel@kingindustrial.com  
404.942.2084



Industrial • Commercial • Investment

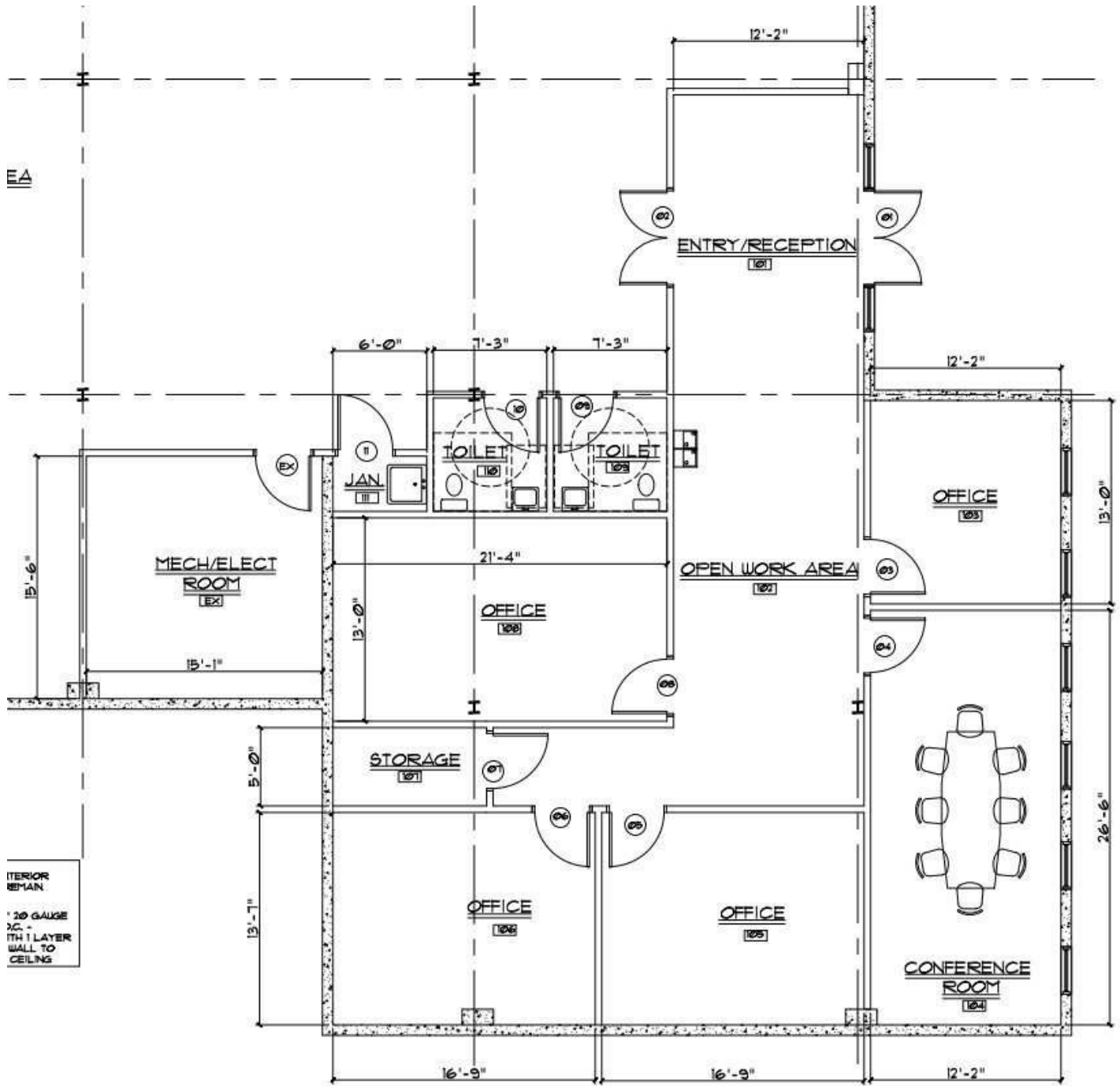
# ADDITIONAL PHOTOS



**Steve Ratchford, SIOR, CCIM**  
Senior Vice President  
sratchford@kingindustrial.com  
404.942.2003

**Avani Patel, CPA (Inactive), MBA**  
Associate  
apatel@kingindustrial.com  
404.942.2084

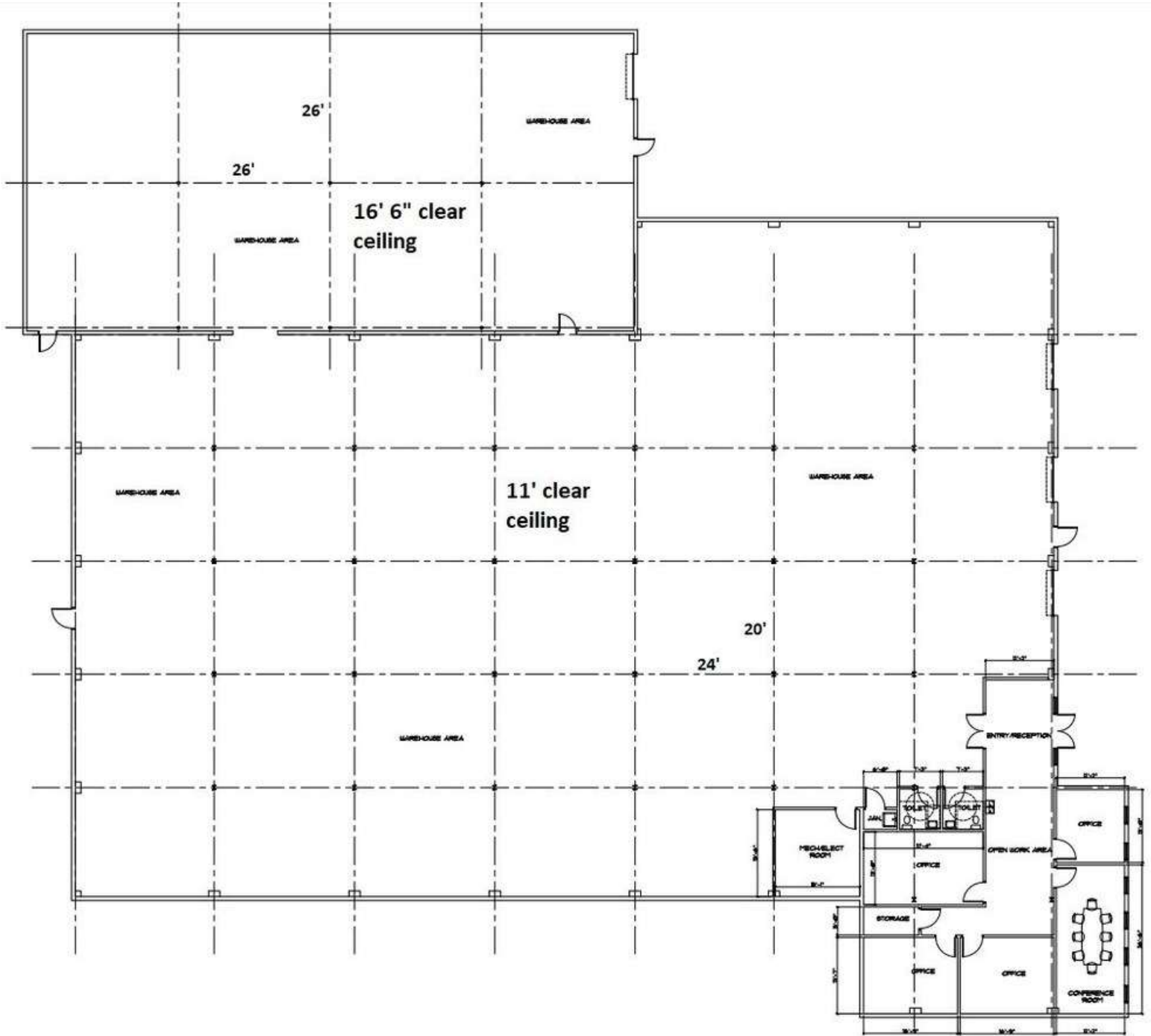
# OFFICE FLOOR PLAN



**Steve Ratchford, SIOR, CCIM**  
 Senior Vice President  
 sratchford@kingindustrial.com  
 404.942.2003

**Avani Patel, CPA (Inactive), MBA**  
 Associate  
 apatel@kingindustrial.com  
 404.942.2084

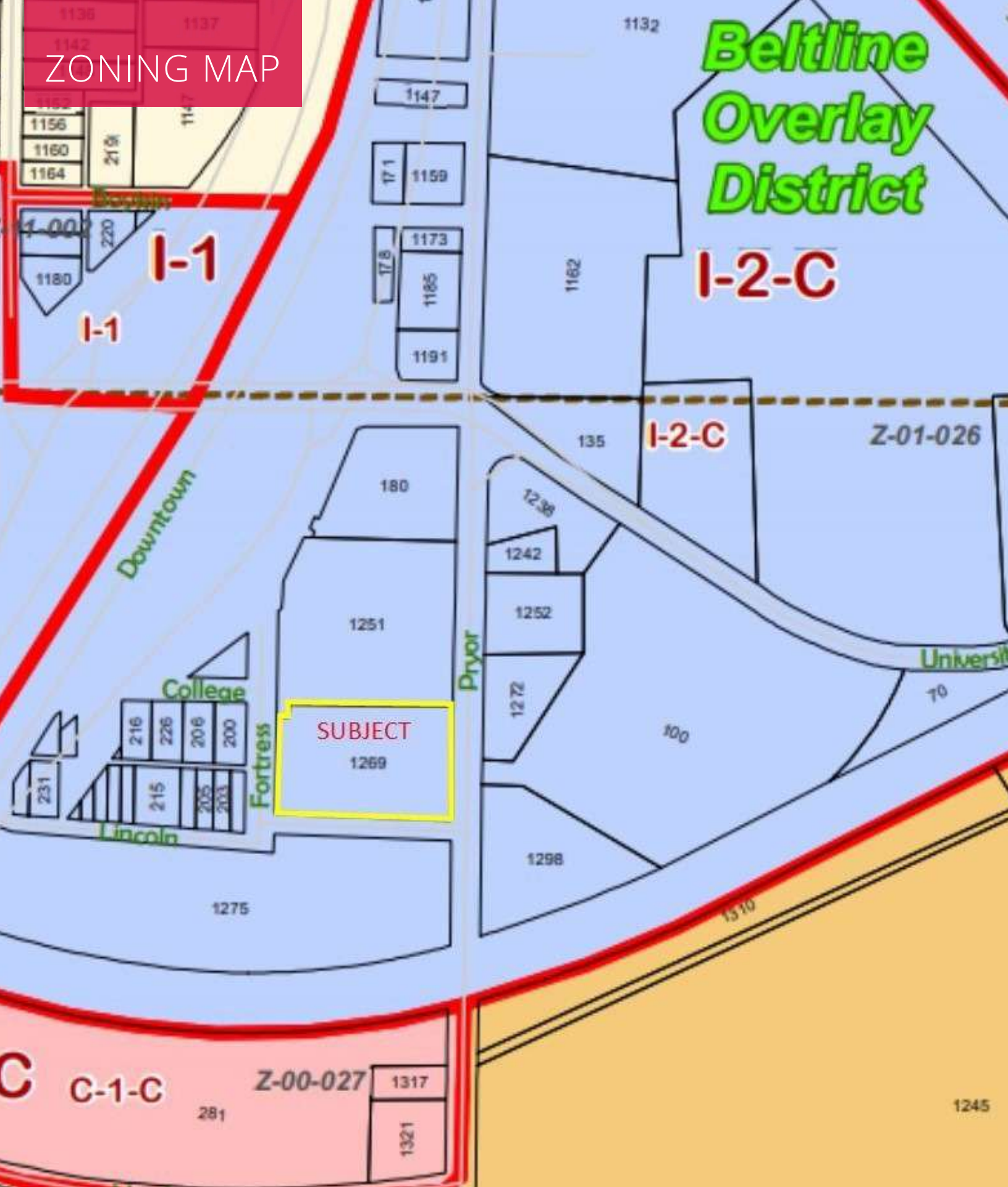
# FLOOR PLAN



**Steve Ratchford, SIOR, CCIM**  
Senior Vice President  
sratchford@kingindustrial.com  
404.942.2003

**Avani Patel, CPA (Inactive), MBA**  
Associate  
apatel@kingindustrial.com  
404.942.2084

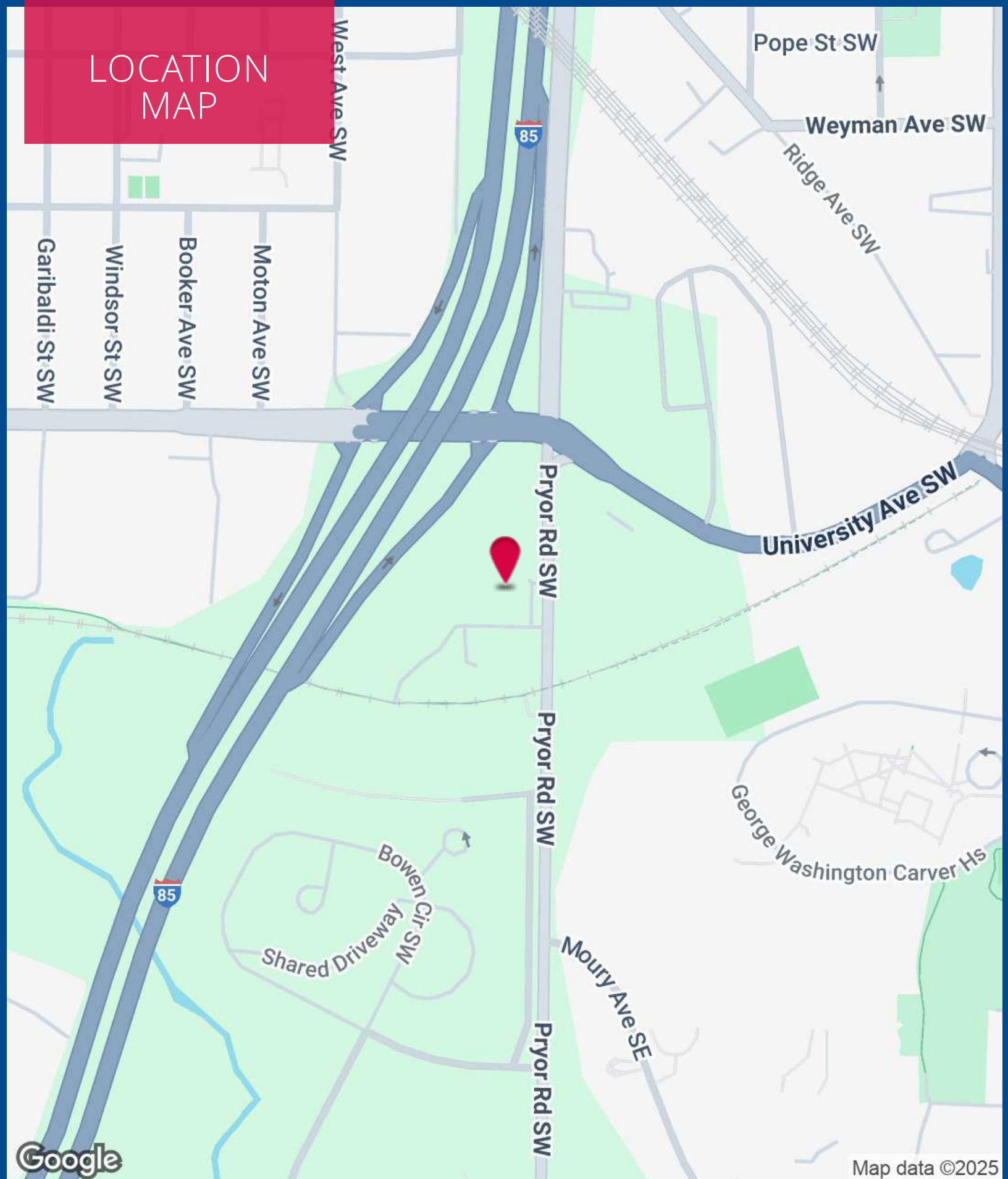
# ZONING MAP



Steve Ratchford, SIOR, CCIM  
Senior Vice President  
sratchford@kingindustrial.com  
404.942.2003

Avani Patel, CPA (Inactive), MBA  
Associate  
apatel@kingindustrial.com  
404.942.2084

# LOCATION MAP



**Steve Ratchford, SIOR, CCIM**  
Senior Vice President  
sratchford@kingindustrial.com  
404.942.2003

**Avani Patel, CPA (Inactive), MBA**  
Associate  
apatel@kingindustrial.com  
404.942.2084



Industrial • Commercial • Investment



EXCLUSIVELY LISTED BY:

**Steve Ratchford, SIOR, CCIM**  
Senior Vice President  
sratchford@kingindustrial.com  
404.942.2003

**Avani Patel, CPA (Inactive), MBA**  
Associate  
apatel@kingindustrial.com  
404.942.2084