

PARK PLACE ON WENDOVER

411 N. WENDOVER ROAD
CHARLOTTE, NORTH CAROLINA



FOR SALE

PROPERTY OVERVIEW

PROPERTY HIGHLIGHTS

- Opportunity to purchase a small medical office condo in an established medical park
- Located within the midtown / Randolph Road medical submarket
- 2nd generation medical space suitable for a variety of uses
- Available immediately
- Property Taxes (2025): \$2,691
- Association Dues: TBD



CONTACT:
REED GRIFFITH
704-619-0473
reed@FlagshipHP.com



AVAILABLE SPACE:
1,591 SF



SALES PRICE:
\$399,000



ANNUAL PROPERTY TAXES:
\$2,691

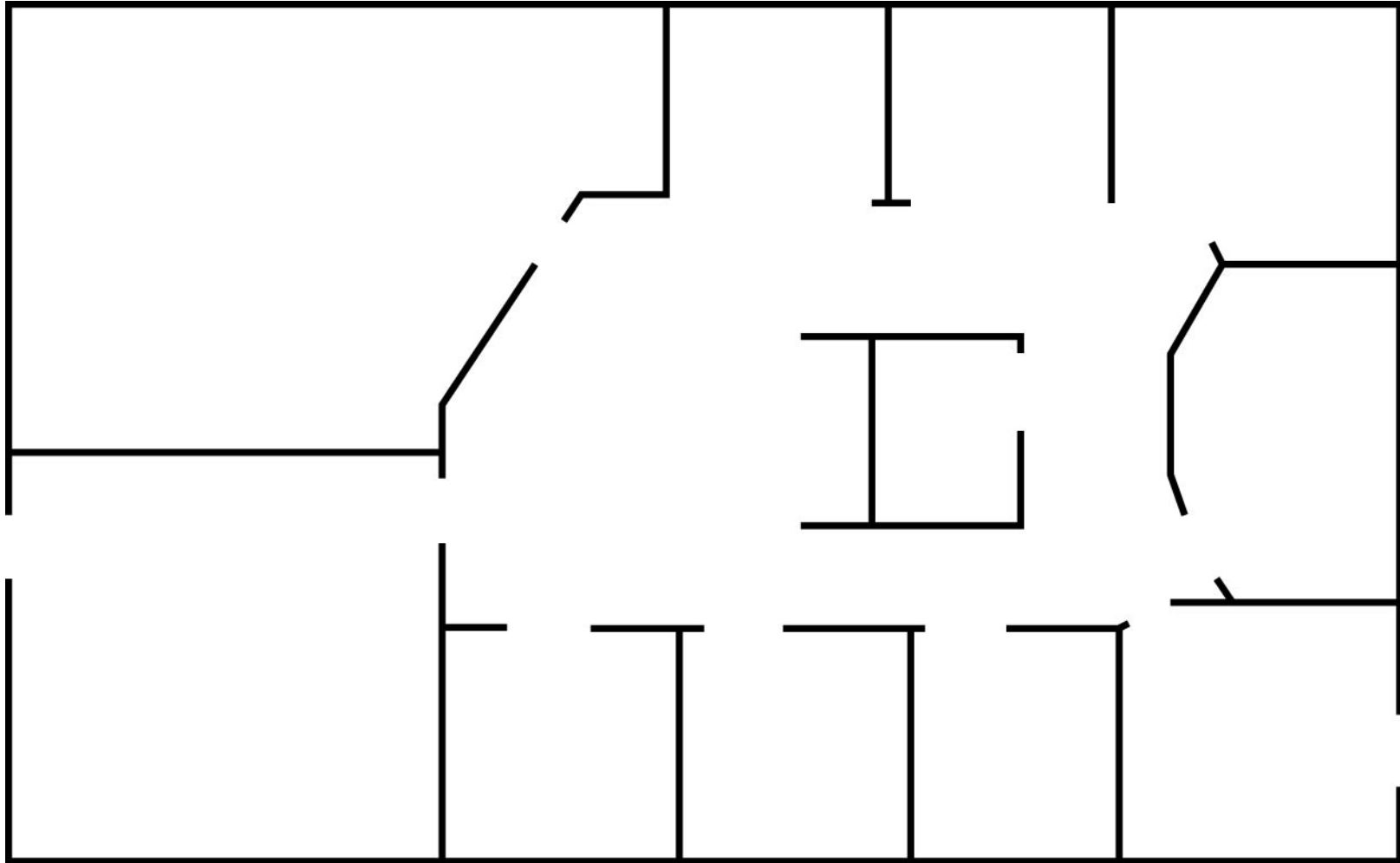


ASSOCIATION DUES:
\$5.65/SF Annually



YEAR BUILT/RENOVATED:
1985/2011

FLOOR PLAN



[VIRTUAL TOUR](#)



AREA MAP



Novant Health
Presbyterian Medical
Center

Charlotte Dentistry

Charlotte Asthma &
Allergy Center

Charlotte Dermatology

Eastover Medical Park

Carolina Center for Oral
& Facial Surgery

411 N. Wendover Road

Independence Blvd

Monroe Rd

GRIER HEIGHTS

EASTOVER

Bojangles Coliseum

N Wendover Rd

Providence Rd

Randolph Rd

Food Lion

Home Depot

Chick-fil-a

■ Site

■ Medical

■ Non-medical