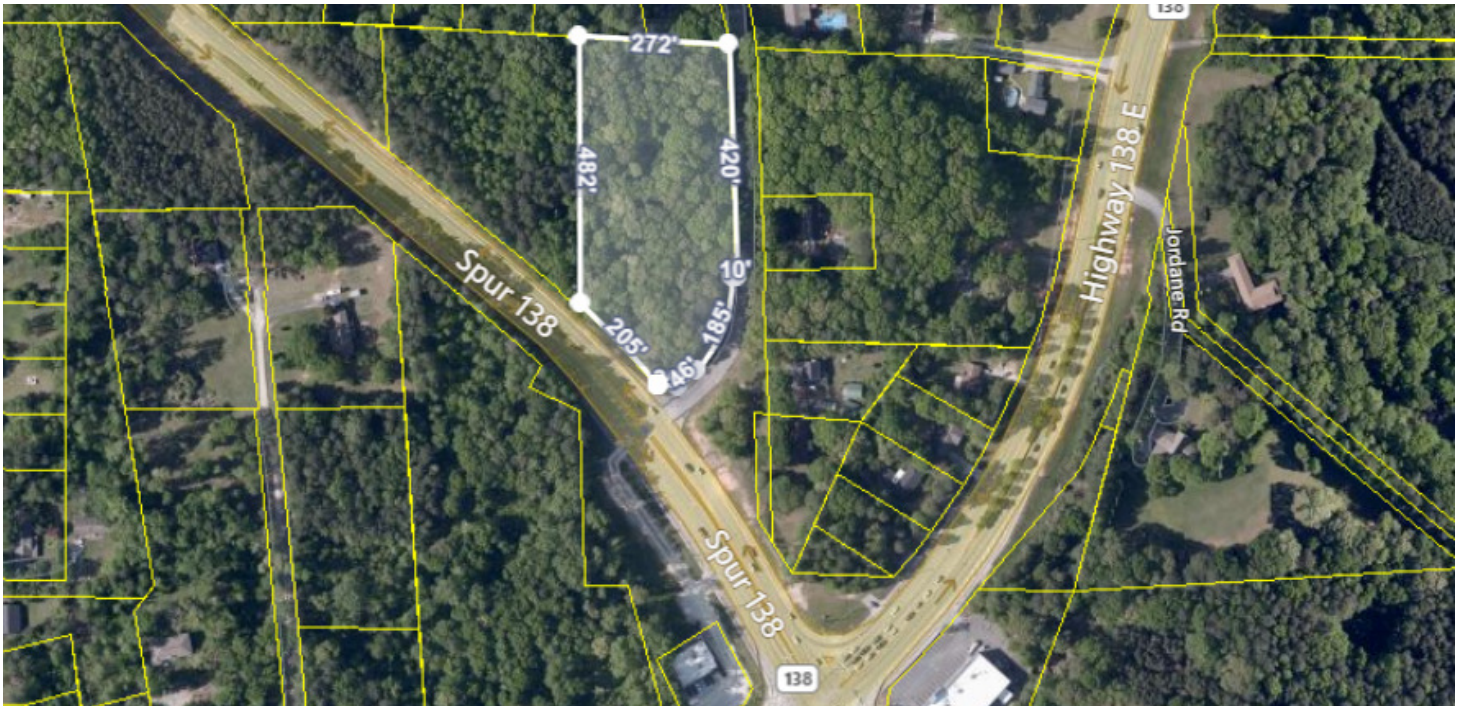


# SALE

## BAMBY LANE

1628 Highway 138 Jonesboro, GA 30236



### PROPERTY DESCRIPTION

Fantastic visibility and a great location. This property is located at the intersection of 138 & Bamby Ln in Jonesboro Clayton County Georgia. Minutes away from downtown Jonesboro and GA route 54 and U.S HWY 19/41. A prime commercial property with a lot of potential for mixed-use development. Here are some key points to highlight:

It is situated at the intersection of 138 & Bamby Ln in Jonesboro, Clayton County, Georgia, the property enjoys excellent visibility and accessibility. Being minutes away from downtown Jonesboro, GA Route 54, and U.S. HWY 19/41.

The property is zoned for commercial mixed-use, allowing for a variety of development options including office spaces, retail outlets, and apartments/multifamily residences. This flexibility can attract a diverse range of tenants and customers.

Given its zoning and location, the property is ideal for a vibrant mixed-use development that caters to both residential and commercial needs. Integrating office spaces, retail shops, and apartments can create a dynamic community hub.

It has access to all utilities, including sewer lines, is a significant advantage for development. This reduces the complexity and cost of infrastructure setup, making the property more attractive to developers.

### OFFERING SUMMARY

Sale Price:	\$290,000
Lot Size:	3.45 Acres
Building Size:	0 SF

DEMOGRAPHICS	1 MILE	3 MILES	5 MILES
Total Households	1,981	19,805	64,199
Total Population	5,502	53,970	181,700
Average HH Income	\$91,149	\$83,799	\$76,273

**Adam Shekarabi**  
(770) 632-1774



**COLDWELL BANKER  
COMMERCIAL**  
BULLARD

# SALE

## BAMBY LANE

1628 Highway 138 Jonesboro, GA 30236

### SALE PRICE

**\$290,000**

### PROPERTY INFORMATION

Property Type	Retail
Property Subtype	Street Retail
Zoning	Commercial Mixed-Use
Lot Size	3.45 Acres
APN #	12018B A017

### LOCATION INFORMATION

Building Name	Bamby lane
Street Address	1628 Highway 138
City, State, Zip	Jonesboro, GA 30236
County	Clayton
Market	Jonesboro
Sub-market	Clayton/Jonesboro
Cross-Streets	Highway 138

### PARKING & TRANSPORTATION

### UTILITIES & AMENITIES

### BUILDING INFORMATION

Building Size	0 SF
---------------	------



**Adam Shekarabi**  
(770) 632-1774

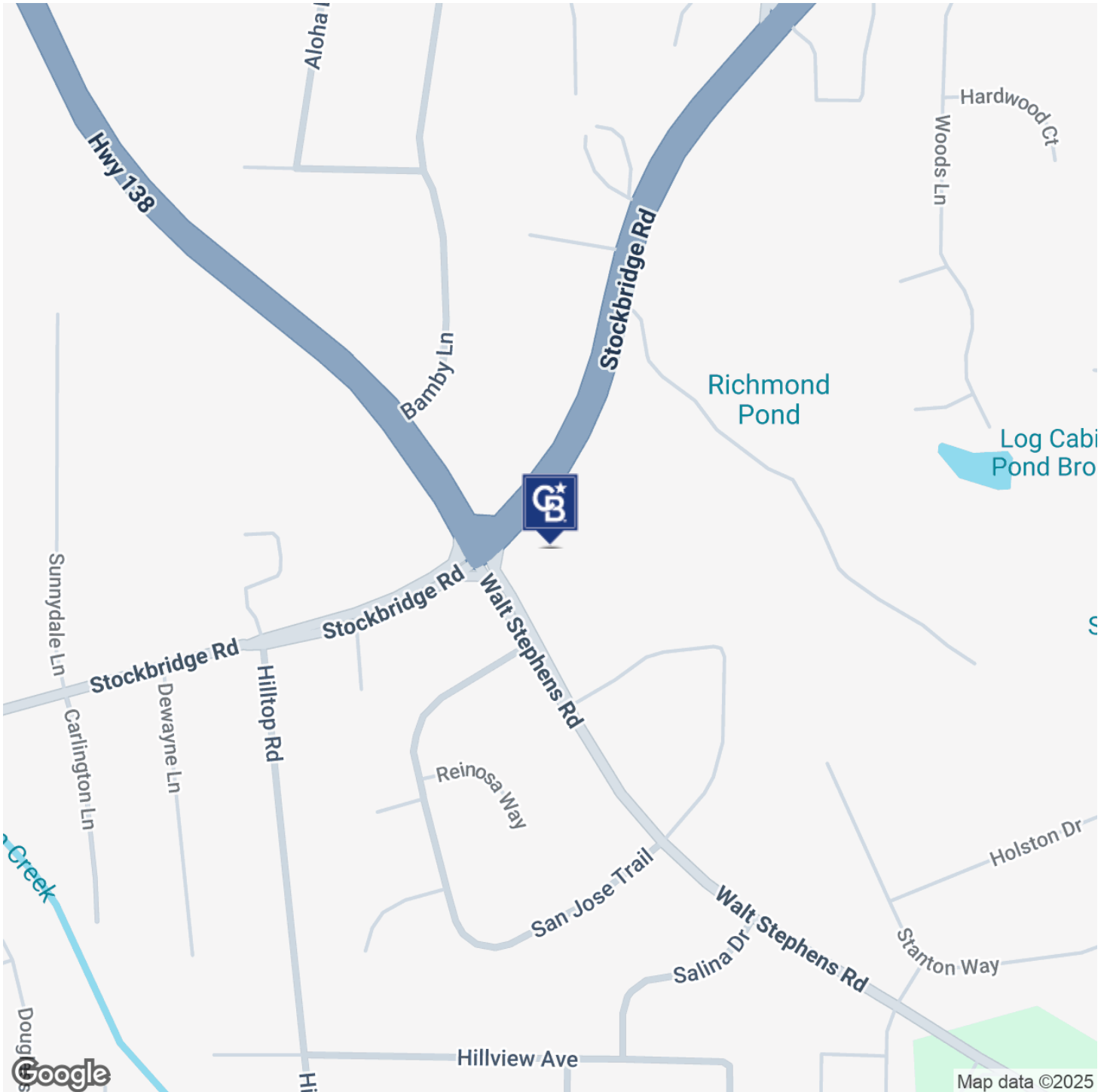


**COLDWELL BANKER  
COMMERCIAL**  
BULLARD

# SALE

## BAMBY LANE

1628 Highway 138 Jonesboro, GA 30236



**Adam Shekarabi**  
(770) 632-1774

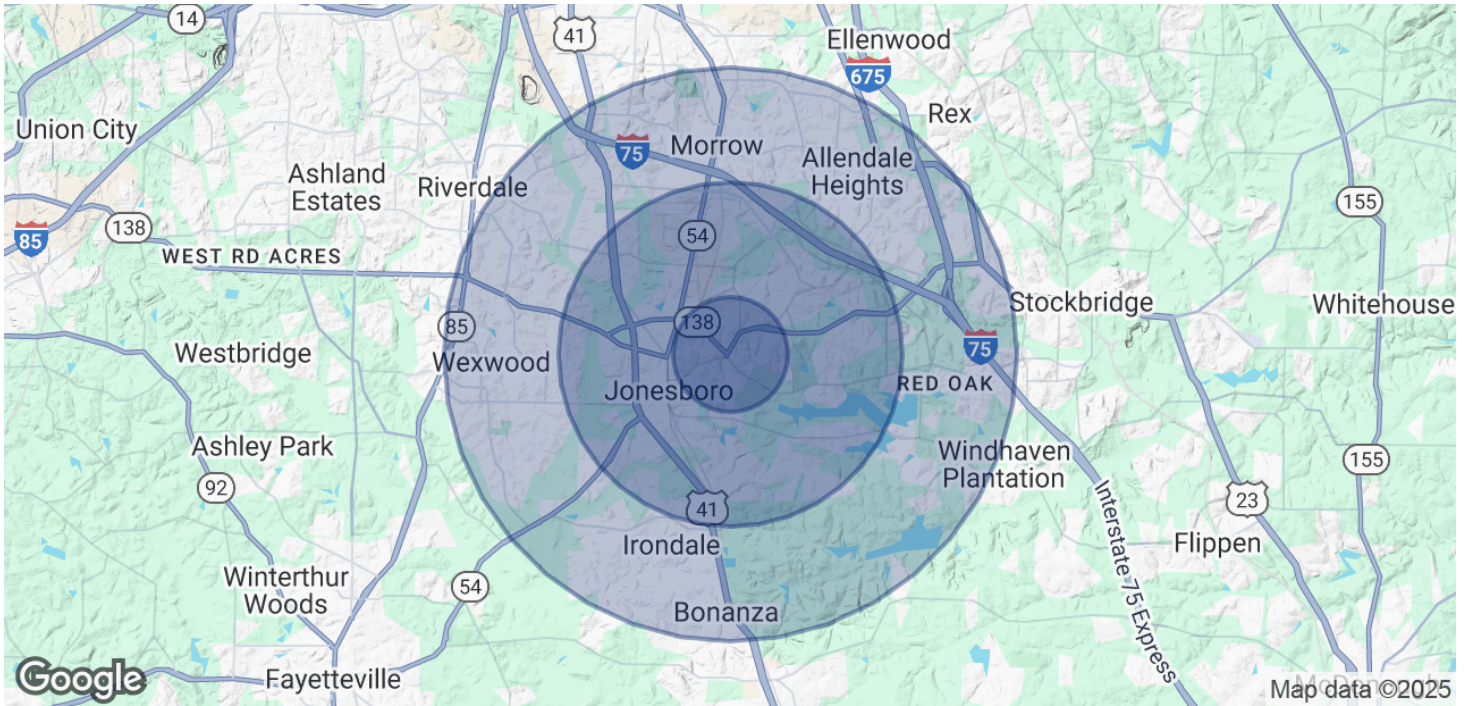


**COLDWELL BANKER**  
**COMMERCIAL**  
BULLARD

# SALE

## BAMBY LANE

1628 Highway 138 Jonesboro, GA 30236



### POPULATION

	1 MILE	3 MILES	5 MILES
Total Population	5,502	53,970	181,700
Average Age	40	39	37
Average Age (Male)	38	37	36
Average Age (Female)	42	40	39

### HOUSEHOLDS & INCOME

	1 MILE	3 MILES	5 MILES
Total Households	1,981	19,805	64,199
# of Persons per HH	2.8	2.7	2.8
Average HH Income	\$91,149	\$83,799	\$76,273
Average House Value	\$247,433	\$281,394	\$243,811

Demographics data derived from AlphaMap

**Adam Shekarabi**  
(770) 632-1774



**COLDWELL BANKER**  
**COMMERCIAL**  
BULLARD