

JENDOCO REAL ESTATE

Parkway West Business Park

1601 Parkway View Drive

11,729 Total Square Feet

7,293 Square Feet of Finished Office



MAIN FEATURES

- Clear Height: 16ft. Above finished floor to underside of structural steel
- Exterior: Insulated wall panel
- Glass wall system at offices

UTILITIES

- Electric: 120/208 volt, three phase four wire
- Natural Gas: Equitable
- Water & Sewage: Robinson Twp.

MISCELLANEOUS

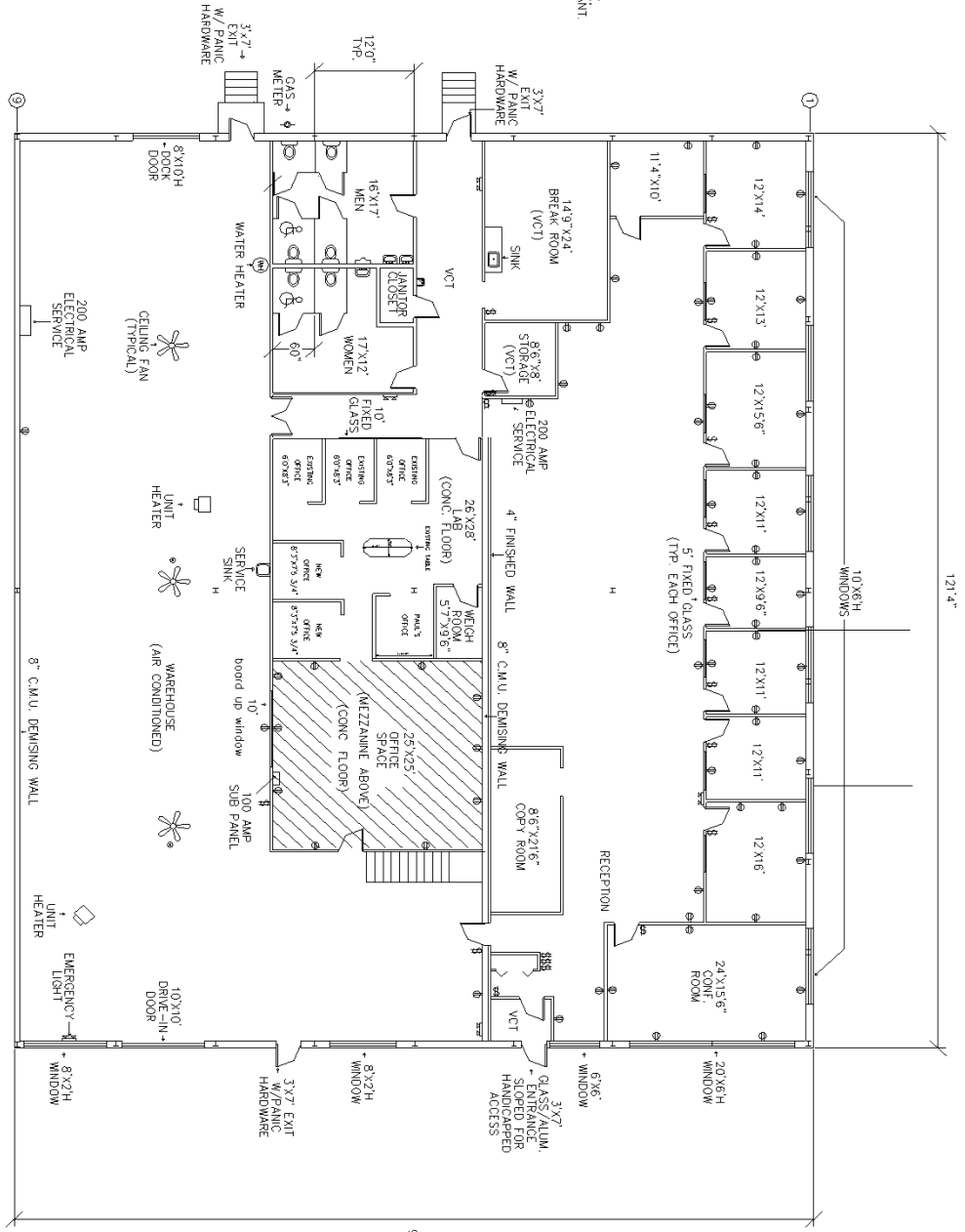
- Ample truck access and maneuvering
- Drive-in access
- 24 hour, 7 day a week access



Contact Meredith Calfe & Pierre Brun - T 412-361-4509 F 412-361-4790 - Internet www.jendoco-re.com

All information furnished regarding properties for rent or sale are subject to errors, omissions, change of price or rental and change or withdraw without notice. Rental terms, all dimensions and specifications are approximate and subject to change without notice.

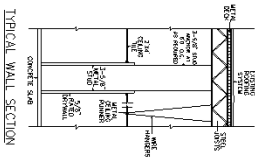
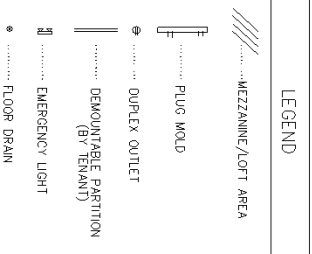
1) ALL FURNITURE, EQUIPMENT, PHONE AND COMPUTER RELATED WORK BY TENANT



ALL INFORMATION ON THIS DRAWING MUST BE FILED UNDER THE BUILDING PERMITS AND NO LIABILITY FOR INFORMATION UTILIZED FROM THIS DOCUMENT.

AS BUILT VERIFIED 09/11/22 BY K. DUBOS

11,729 SQUARE FEET TOTAL AREA
7,293 SQUARE FEET FINISHED AS OFFICE



PITTSBURGH BUSINESS PARKS

CAD Design Team

2000 Lincoln Road
Pittsburgh, PA 15235

Phone: (412) 361 - 4509
Fax: (412) 361 - 4790

PARKWAY WEST IND. PARK

SCALE: 1/8"=1'	APPROVED BY:	DRAWN BY: DET
DATE: 5/3/94	SAWDOZ INC.	REVISED 11/9/23

PW-1601

NORTH

