

FOR LEASE



## PROPERTY DETAILS

570 W. 500 S., West Bountiful, UT 84010

- 9,000 SF available for lease
- Pylon exposure to I-15
- Excellent big box and mid box co-tenancy
- Great parking
- Easy access off 500 South and 500 West
- NNN Fee: \$4.25/SF

## 2025 DEMOS



### EST. POPULATION

1 MILE » **12,007**  
 3 MILE » **81,412**  
 5 MILE » **105,208**



### EST. HOUSEHOLDS

1 MILE » **4,722**  
 3 MILE » **28,425**  
 5 MILE » **36,366**



### EST. AVERAGE HH INCOME

1 MILE » **\$108,602**  
 3 MILE » **\$136,007**  
 5 MILE » **\$143,561**

# NEWMARK

## MOUNTAIN WEST

**ANDY MOFFITT**  
 amoffitt@newmarkmw.com  
 direct 801.456.8811  
[View Profile](#)

**FULL SERVICE  
 COMMERCIAL REAL ESTATE**  
 312 East South Temple  
 Salt Lake City, Utah 84111  
 Office 801.456.8800  
[www.newmarkmw.com](http://www.newmarkmw.com)



# NEWMARK

 **MOUNTAIN WEST**

**ANDY MOFFITT**  
amoffitt@newmarkmw.com  
direct 801.456.8811  
[View Profile](#)



**FULL SERVICE  
COMMERCIAL REAL ESTATE**  
312 East South Temple  
Salt Lake City, Utah 84111  
Office 801.456.8800  
[www.newmarkmw.com](http://www.newmarkmw.com)

# SITE PLAN

# BOUNTIFUL GATEWAY CROSSING

# NEWMARK

MOUNTAIN WEST

**ANDY MOFFITT**  
amoffitt@newmarkmw.com  
direct 801.456.8811  
[View Profile](#)



**FULL SERVICE  
COMMERCIAL REAL ESTATE**  
312 East South Temple  
Salt Lake City, Utah 84111  
Office 801.456.8800  
[www.newmarkmw.com](http://www.newmarkmw.com)



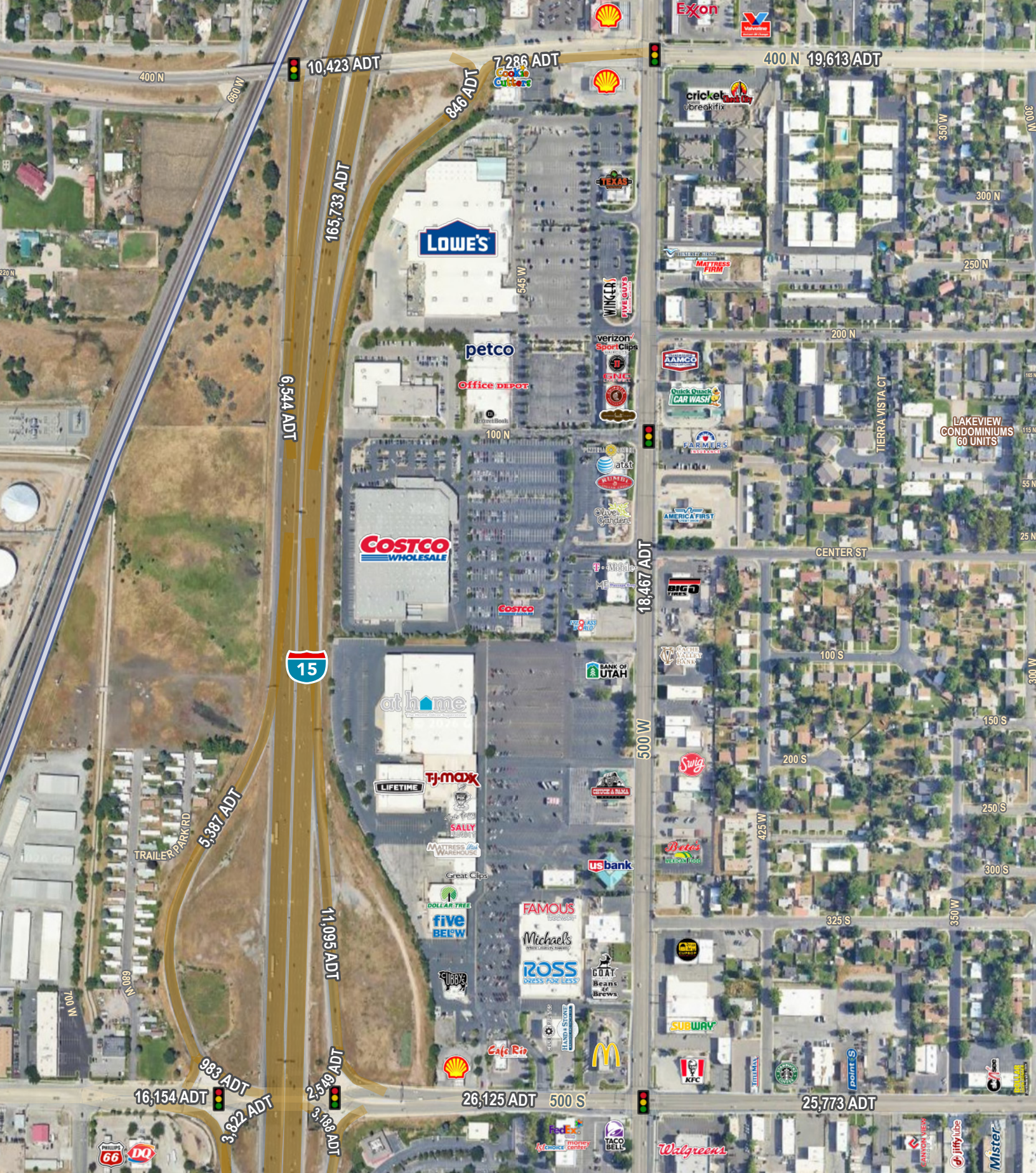
# NEWMARK

**MOUNTAIN WEST**

**ANDY MOFFITT**  
amoffitt@newmarkmw.com  
direct 801.456.8811  
[View Profile](#)



**FULL SERVICE  
COMMERCIAL REAL ESTATE**  
312 East South Temple  
Salt Lake City, Utah 84111  
Office 801.456.8800  
[www.newmarkmw.com](http://www.newmarkmw.com)



**ANDY MOFFITT**  
 amoffitt@newmarkmw.com  
 direct 801.456.8811  
[View Profile](#)

**FULL SERVICE  
 COMMERCIAL REAL ESTATE**  
 312 East South Temple  
 Salt Lake City, Utah 84111  
 Office 801.456.8800  
[www.newmarkmw.com](http://www.newmarkmw.com)