

WEST HOOD PLACE



7401 W. Hood Place Kennewick, WA 99336

- SUITE: #130
- RSF: 435+/-
- RATE: \$550/MO
- TERM/LEASE: 3-5 YR
- Modified Gross



West Hood Place is located in the Central Business District and has a professional tenant mix consisting of medical professionals, home healthcare services, and more! The building is in a quiet area and offers a great location, easy accessibility, and ample parking.

Suite 130 is located on the first floor of 7401 W. Hood Place and offers a nice reception with private office, updated common areas and a professional setting.

Please see the attached floorplan for clarification. Tenants are responsible for pro-rata share of utilities, no NNN!



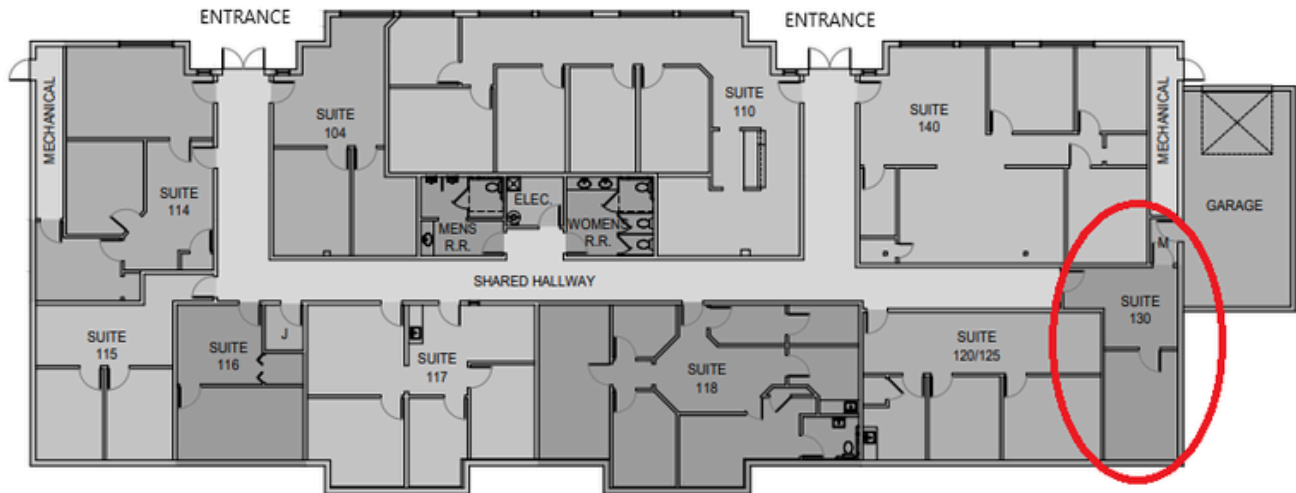
HARLEY HUSTON
COMMERCIAL BROKER
509-619-7347 MOBILE
509-735-0161 COMMERCIAL LEASING
HHUSTON@CROWNPROPERTYMANAGEMENT.COM

OLIVIA KELLY
COMMERCIAL BROKERAGE ASSISTANT
509-957-2900 MOBILE
509-735-0161 COMMERCIAL LEASING
OKELLY@CROWNPROPERTYMANAGEMENT.COM

FOR LEASE: SUITE 130

7401 W Hood Pl
Kennewick, WA 99336

LOWER LEVEL FLOORPLAN



Disclaimer: The material contained herein is furnished solely for the purpose of considering the Leasing of the Property. Neither Crown Property Management nor the Owner make any representation or warranty, express or implied as to the accuracy or completeness of the information contained herein. The information contained herein is subject to change without notice and the recipient of these materials are advised and encouraged to conduct their own comprehensive review and analysis of the Property. The Owner expressly reserves the right, at it's sole discretion, to reject any or all expressions of interest to Lease the Property and to terminate negotiations with any entity, for any reason, at any time with or without notice.



CROWN PROPERTY MANAGEMENT
552 N. COLORADO ST. STE. 101
KENNEWICK, WA 99336
509-735-0415 OFFICE
CROWNCOMMERCIALREAL ESTATE.COM

HARLEY HUSTON
COMMERCIAL BROKER
509-619-7347 MOBILE
509-735-0161 COMMERCIAL LEASING
HHUSTON@CROWNPROPERTYMANAGEMENT.COM