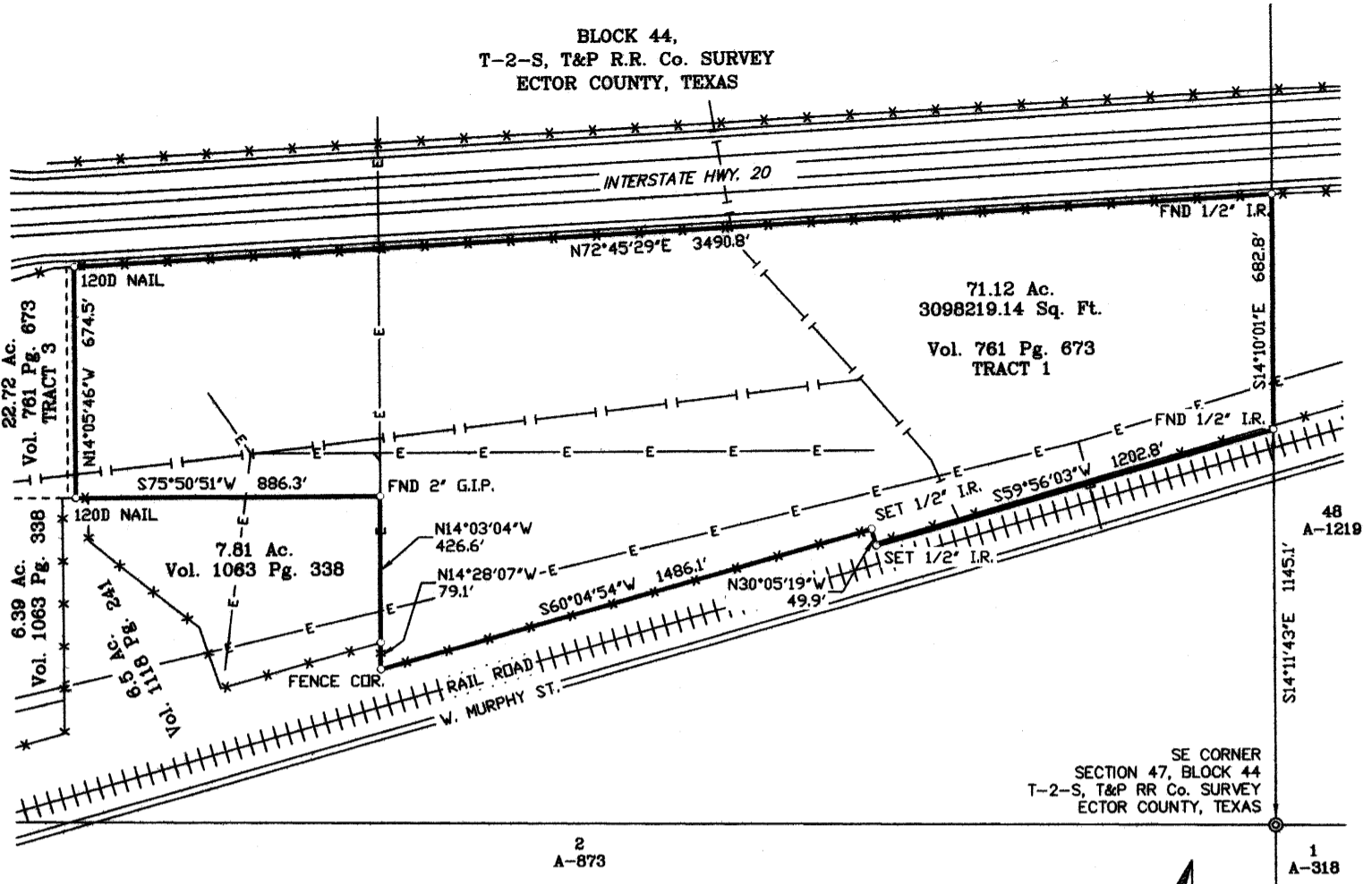


SECTION 47
A-317

BLOCK 44,
T-2-S, T&P R.R. Co. SURVEY
ECTOR COUNTY, TEXAS



SE CORNER
SECTION 47, BLOCK 44
T-2-S, T&P RR Co. SURVEY
ECTOR COUNTY, TEXAS

2
A-873

1
A-1218



SCALE = 1:500

NOTE
BASIS OF BEARINGS ARE GRID,
STATE PLANE COORDINATES,
NAD27, TX-C
DISTANCES ARE SURFACE

FIELD NOTE DESCRIPTION OF A 71.12 ACRE TRACT OUT OF SECTION 47, BLOCK 44, T-2-S, T&P RR COMPANY SURVEY, ECTOR COUNTY, TEXAS, AS FOLLOWS:

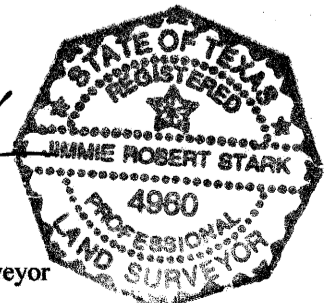
BEGINNING at a 1/2-inch iron rod found in the east line of Section 47, Block 44, T-2-S, T&P RR Company Survey, Ector County, Texas, for the southeast corner of this tract, as filed of record in Volume 761, Page 673, Tract 1, Ector County, Texas; from which point, the southeast corner of said Section 47 bears S 14° 11' 43" E, 1145.1 feet;
THENCE S 59° 56' 03" W, 1202.8 feet to a 1/2-inch iron rod set for a corner of this tract;
THENCE N 30° 05' 19" W, 49.9 feet to a 1/2-inch iron rod set for a corner of this tract;
THENCE S 60° 04' 54" W, 1486.1 feet to a fence corner for a corner of a 6.5 acre tract, as filed of record in Volume 1118, Page 241, Ector County Deed Records, and for the southwest corner of this tract;
THENCE N 14° 28' 07" W, 79.1 feet to a fence corner for a corner of said 6.5 acre tract, the southeast corner of a 7.81 acre tract, as filed of record in Volume 1063, Page 338, Ector County Deed Records, and a corner of this tract;
THENCE N 14° 03' 04" W, with the east line of said 7.81 acre tract, 426.6 feet to a 2-inch galvanized iron pipe for the northeast corner of said 7.81 acre tract and a corner of this tract;
THENCE S 75° 50' 51" W, with the north line of said 7.81 acre tract, 886.3 feet to a 120d nail set in the north line of said 6.5 acre tract and the east line of a 22-foot wide road, for a corner of this tract;
THENCE N 14° 05' 46" W, with the east line of a 22-foot wide road, 674.5 feet to a 120d nail set in the south right-of-way line of Interstate Highway No. 20, for the northwest corner of this tract;
THENCE N 72° 45' 29" E, with the south right-of-way line of said Interstate Highway No. 20, a distance of 3490.8 feet to a 1/2-inch iron rod found in the south right-of-way line of said Interstate Highway No. 20 and in the east line of said Section 47, for the northeast corner of this tract;
THENCE S 14° 10' 01" E, with the east line of said Section 47, a distance of 682.8 feet to the place of beginning and containing 3098219.14 square feet or 71.12 acres of land.

Dated: January 2, 2020

STARK SURVEYING, LLC

By:

Jimmie Robert Stark
Registered Professional Land Surveyor



SS Job No. 87608
John Loepky



SCALE = 1:200

NOTE

BASIS OF BEARINGS ARE GRID, STATE PLANE COORDINATES, NAD27, TX-C DISTANCES ARE SURFACE

22.72 Ac.
Vol. 761 Pg. 673
TRACT 3

71.12 Ac.
Vol. 761 Pg. 673
TRACT 1

SECTION 47
A-317

BLOCK 44,
T-2-S, T&P R.R. Co. SURVEY
ECTOR COUNTY, TEXAS

6.39 Ac.
Vol. 1063 Pg. 338

6.5 Ac.
Vol. 1118 Pg. 241

7.81 Ac.
340164.96 Sq. Ft.
Vol. 1063 Pg. 338

SW CORNER
SECTION 47, BLOCK 44
T-2-S, T&P RR Co. SURVEY
ECTOR COUNTY, TEXAS
A-1218
3
A-319 | A-873

FIELD NOTE DESCRIPTION OF A 7.81 ACRE TRACT OUT OF SECTION 47, BLOCK 44, T-2-S, T&P RR COMPANY SURVEY, ECTOR COUNTY, TEXAS, AS FOLLOWS:

BEGINNING at a fence corner for an interior corner of a 6.5 acre tract, as filed of record in Volume 1118, Page 241, Ector County Deed Records, and for the southwest corner of this tract, as filed of record in Volume 1063, Page 338, Ector County Deed Records; from which point, the southwest corner of Section 47, Block 44, T-2-S, T&P RR Company Survey, Ector County, Texas, bears S 13° 51' 32" E, 389.6 feet and S 76° 08' 28" W, 2225.4 feet;

THENCE N 32° 58' 05" W, with the east line of said 6.5 acre tract, 189.2 feet to a fence corner for a corner of said 6.5 acre tract and a corner of this tract;

THENCE N 65° 31' 55" W, with the east line of said 6.5 acre tract, 410.0 feet to a fence corner for a corner of said 6.5 acre tract and a corner of this tract;

THENCE N 14° 25' 33" W, with the east line of said 6.5 acre tract, 125.0 feet to a 1/2-inch iron rod set for a corner of said 6.5 acre tract, in the south line of a 71.12 acre tract, as filed of record in Volume 761, Page 673, Ector County Deed Records, and for the northwest corner of this tract;

THENCE N 75° 50' 46" E, with the south line of said 71.12 acre tract, 849.5 feet to a 2-inch galvanized iron pipe found for a corner of said 71.12 acre tract and for the northeast corner of this tract;

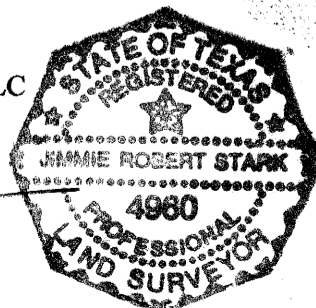
THENCE S 14° 03' 04" E, with the west line of said 71.12 acre tract, 426.6 feet to a fence corner, in the west line of said 71.12 acre tract, for a corner of said 6.5 acre tract and for the southeast corner of this tract;

THENCE S 59° 54' 08" W, with the north line of said 6.5 acre tract, 485.4 feet to the place of beginning and containing 340164.96 square feet or 7.81 acres of land.

Dated: January 2, 2020

STARK SURVEYING, LLC

By:



Jimmie Robert Stark

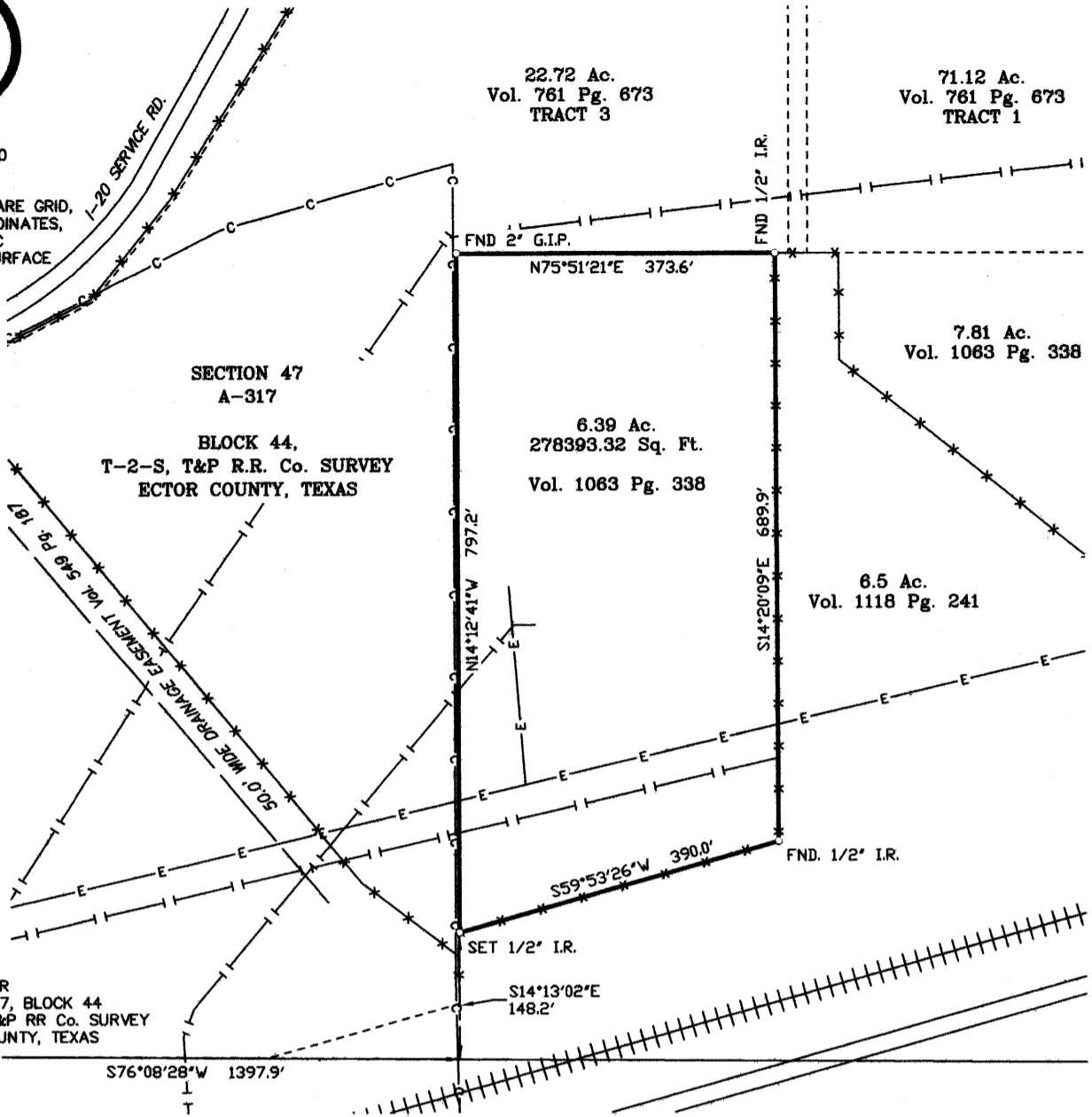
Registered Professional Land Surveyor



SCALE= 1:200

NOTE

BASIS OF BEARINGS ARE GRID,
STATE PLANE COORDINATES,
NAD27, TX-C
DISTANCES ARE SURFACE



FIELD NOTE DESCRIPTION OF A 6.39 ACRE TRACT OUT OF SECTION 47, BLOCK 44, T-2-S, T&P RR COMPANY SURVEY, ECTOR COUNTY, TEXAS, AS FOLLOWS:

BEGINNING at a 1/2-inch iron rod set in the east line of a 22.72 acre tract, as filed of record in Volume 761, Page 673, Ector County Deed Records, and for the southwest corner of this tract, as filed in Volume 1063, Page 338, Ector County Deed Record; from which point, the southwest corner of Section 47, Block 44, T-2-S, T&P RR Company Survey, Ector County, Texas, bears S 14° 13' 02" E, 148.2 feet and S 76° 08' 28" W, 1397.9 feet;

THENCE N 14° 12' 41" W, with the east line of said 22.72 acre tract, 797.2 feet to a 2-inch galvanized iron pipe found for a corner of said 22.72 acre tract and the northwest corner of this tract;

THENCE N 75° 51' 21" E, with the south line of said 22.72 acre tract, 373.6 feet to a 1/2-inch iron rod found in the south line of said 22.72 acre tract, for the northwest corner of a 6.5 acre tract, as filed of record in Volume 1118, Page 241, Ector County Deed Records, and for the northeast corner of this tract;

THENCE S 14° 20' 09" E, with the west line of said 6.5 acre tract, 689.9 feet to a 1/2-inch iron rod found for a corner of said 6.5 acre tract and for the southeast corner of this tract;

THENCE S 59° 53' 26" W, with the north line of said 6.5 acre tract, 390.0 feet to the place of beginning and containing 278393.32 square feet or 6.39 acres of land.

Dated: January 2, 2020

STARK SURVEYING, LLC

By:



Jimmie Robert Stark
Registered Professional Land Surveyor

SS Job No. 87608
John Loepky



SCALE= 1:300

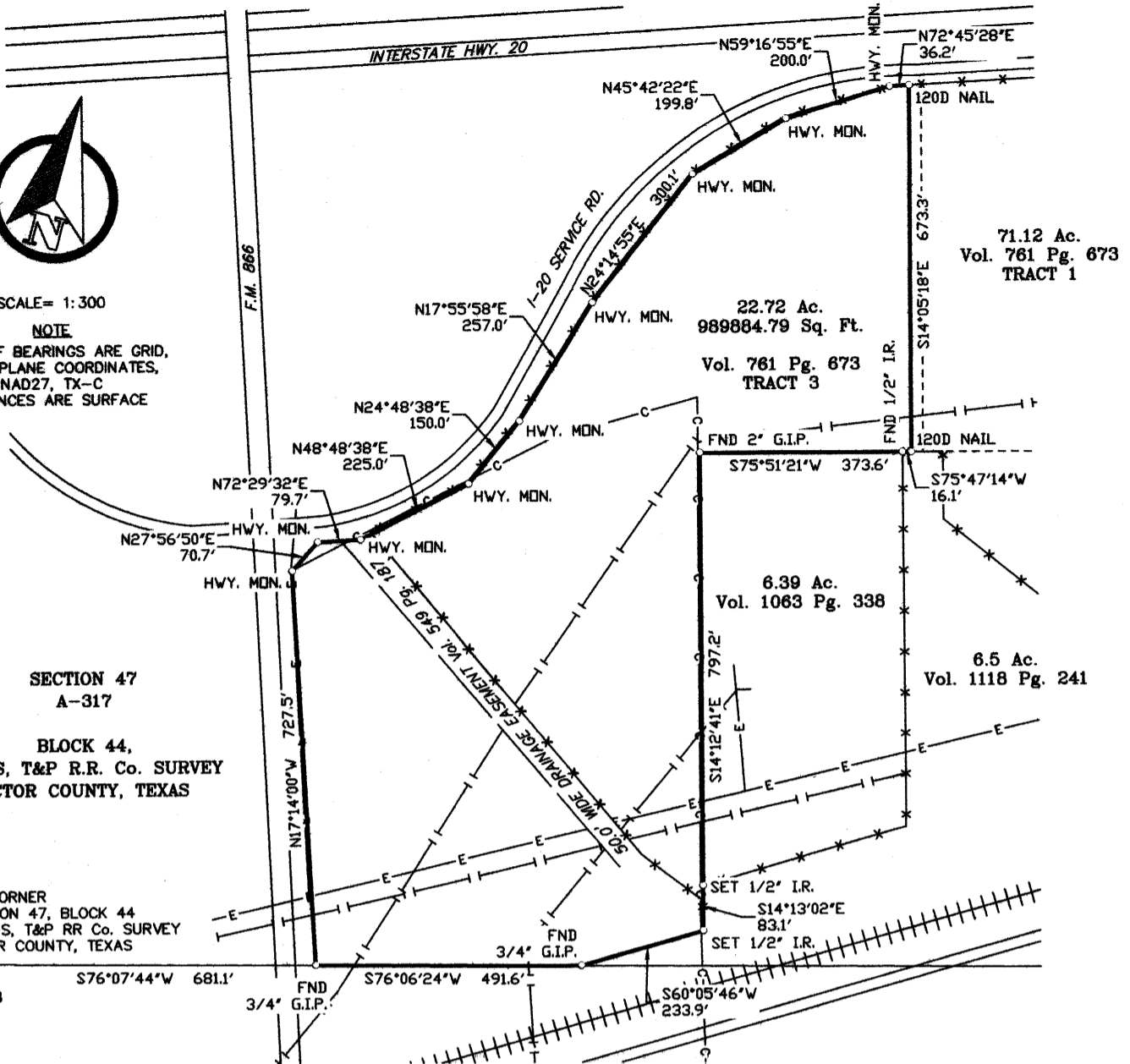
NOTE

BASIS OF BEARINGS ARE GRID,
STATE PLANE COORDINATES,
NAD27, TX-C
DISTANCES ARE SURFACE

SECTION 47
A-317

BLOCK 44,
T-2-S, T&P R.R. Co. SURVEY
ECTOR COUNTY, TEXAS

SW CORNER
SECTION 47, BLOCK 44
T-2-S, T&P RR Co. SURVEY
ECTOR COUNTY, TEXAS
48 A-1218
3 A-319 2 A-873
S76°07'44"W 681.1'
S76°06'24"W 491.6'



FIELD NOTE DESCRIPTION OF A 22.72 ACRE TRACT OUT OF SECTION 47, BLOCK 44, T-2-S, T&P RR COMPANY SURVEY, ECTOR COUNTY, TEXAS, AS FOLLOWS:

BEGINNING at a 3/4-inch galvanized iron pipe found in the east right-of-way line of F.M. No. 866 and in the south line of Section 47, Block 44, T-2-S, T&P RR Company Survey, Ector County, Texas, as filed of record in Volume 761, Page 673, Tract 3, Ector County Deed Records, Ector County, Texas, for the southwest corner of this tract; from which point, the southwest corner of said Section 47 bears S 76° 07' 44" W, 681.1 feet;
THENCE N 17° 14' 00" W, with the east right-of-way line of said F.M. No. 866, a distance of 727.5 feet to a Highway Monument found in the east right-of-way line of said F.M. No. 866, for the northwest corner of this tract;
THENCE N 27° 56' 50" E, with the east right-of-way line of said F.M. No. 866 and the south right-of-way line of I-20 Service Road, a distance of 70.7 feet to a Highway Monument found in the east right-of-way line of said F.M. No. 866 and the south right-of-way line of said I-20 Service Road, for a corner of this tract;
THENCE N 72° 29' 32" E, with the south right-of-way line of said I-20 Service Road, 79.7 feet to a Highway Monument found in the south right-of-way line of said I-20 Service Road, for a corner of this tract;
THENCE N 48° 48' 38" E, with the south right-of-way line of said I-20 Service Road, 225.0 feet to a Highway Monument found in the south right-of-way line of said I-20 Service Road, for corner of this tract;
THENCE N 24° 48' 38" E, with the south right-of-way line of said I-20 Service Road, 150.0 feet to a Highway Monument found in the south right-of-way line of said I-20 Service Road, for a corner of this tract;
THENCE N 17° 55' 58" E, with the south right-of-way line of said I-20 Service Road, 257.0 feet to a Highway Monument found in the south right-of-way line of said I-20 Service Road, for a corner of this tract;
THENCE N 24° 14' 55" E, with the south right-of-way line of said I-20 Service Road, 300.1 feet to a Highway Monument found in the south right-of-way line of said I-20 Service Road, for a corner of this tract;
THENCE N 45° 42' 22" E, with the south right-of-way line of said I-20 Service Road, 199.8 feet to a Highway Monument found in the south right-of-way line of said I-20 Service Road, for a corner of this tract;
THENCE N 59° 16' 55" E, with the south right-of-way line of said I-20 Service Road, 200.0 feet to a Highway Monument found in the south right-of-way line of said I-20 Service Road, for a corner of this tract;
THENCE N 72° 45' 28" E, with the south right-of-way line of said I-20 Service Road, 36.2 feet to a 120d nail set in the south right-of-way line of said I-20 Service Road and the west line of a 22-foot wide road, for the northeast corner of this tract;
THENCE S 14° 05' 18" E, with the west line of said 22-foot wide road, 673.3 feet to a 120d nail set in the west line of said 22-foot wide road and in the north line of a 6.5 acre tract, as filed of record in Volume 1118, Page 241, Ector County Deed Records, for the most easterly southeast corner of this tract;
THENCE S 75° 47' 14" W, with the north line of said 6.5 acre tract, 16.1 feet to a 1/2-inch iron rod found for the northwest corner of said 6.5 acre tract and the northeast corner of a 6.39 acre tract, as filed of record in Volume 1063, Page 338, Ector County Deed Records, for a corner of this tract;
THENCE S 75° 51' 21" W, with the north line of said 6.39 acre tract, 373.6 feet to a 2-inch galvanized iron pipe found for the northwest corner of said 6.39 acre tract and a corner of this tract;
THENCE S 14° 12' 41" E, with the west line of said 6.39 acre tract, 797.2 feet to a 1/2-inch iron rod set for the southwest corner of said 6.39 acre tract and a corner of this tract;
THENCE S 14° 13' 02" E, 83.1 feet to a 1/2-inch iron rod set for the southeast corner of this tract;
THENCE S 60° 05' 46" W, 233.9 feet to a 3/4-inch galvanized iron pipe found in the south line of said Section 47, for a corner of this tract;
THENCE S 76°06' 24" W, with the south line of said Section 47, a distance of 491.6 feet to the place of beginning and containing 989884.79 square feet or 22.72 acres of land.

Dated: January 2, 2020

SS Job No. 87608
John Loepky

STARK SURVEYING, LLC.
12800 W. HIGHWAY 80 E.
ODESSA, TX 79765-8639
FIRM No. 10102700
© COPYRIGHT 2019 STARK SURVEYING LLC.

STARK SURVEYING, LTD.
By:
Jimmie Robert Stark
Registered Professional Land Surveyor

