

1430 Business Park Road

Summerville
South Carolina, 29483

Heavy Industrial Yard with Warehouse



Property Specifications

1430 Business Park Road

For Lease or Sale - Heavy Industrial Yard with Warehouse

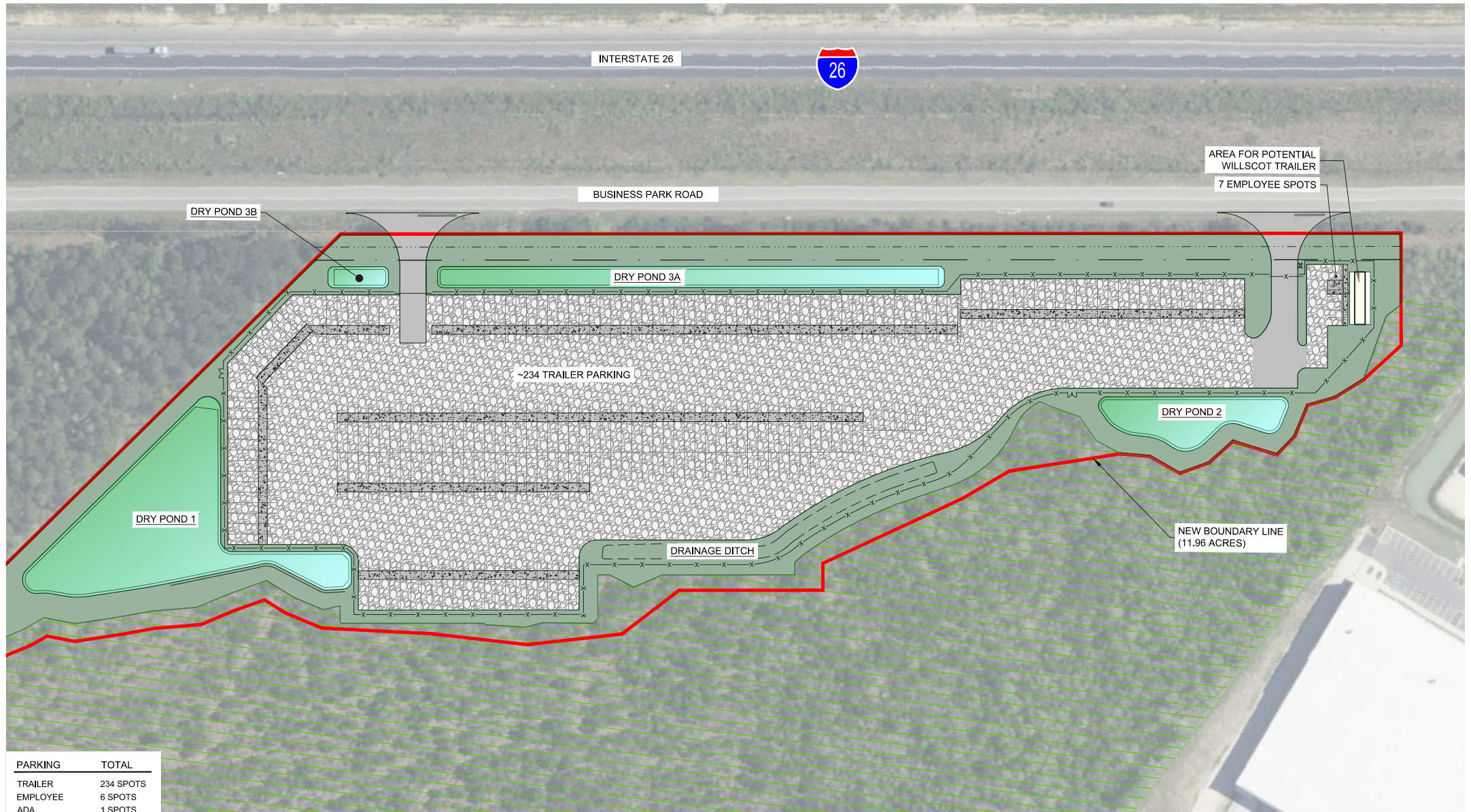


Property Address	1430 Business Park Road
Building Size	10,000 SF (Under Construction)
Usable Area	3.00 - 7.56 Acres (Usable Yard)
Zoning	Heavy Industrial
Total Property	11.99 Acres

High Visibility with Convenient Access

- Highway Frontage (Interstate 26)
- Dual access to I-26 via Business Park Road
- 1.7 Miles to I-26 via Nexton Parkway
- 2.0 Miles to I-26 via Jedburg Road

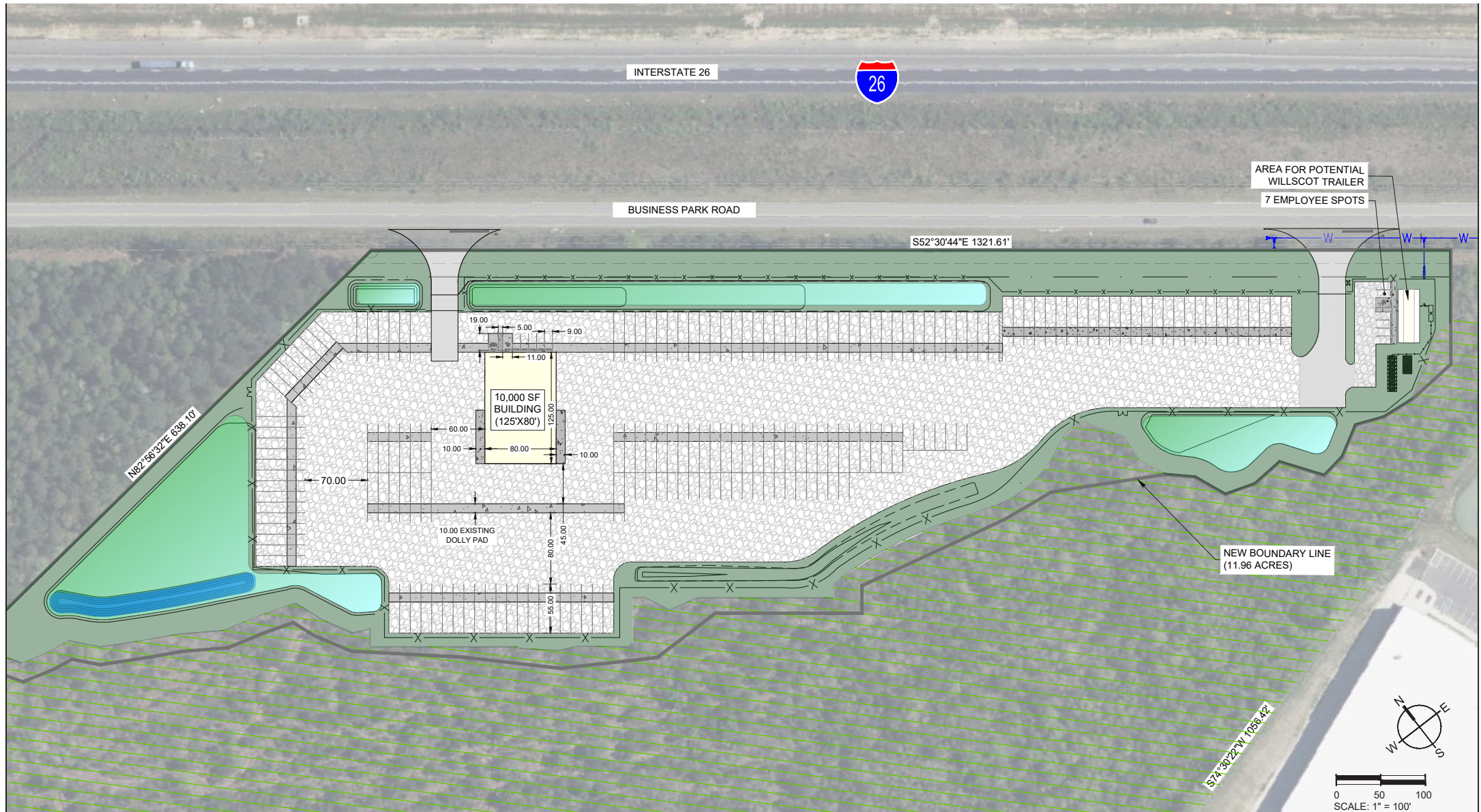
Existing Improvements



Highlights

- Fully Stabilized
- Fully Fenced
- Perimeter Lighting
- Utilities in place (Power, water, sewer, etc.) for mobile office trailer, move-in ready
- Electric Access Gate w/keypad
- Dolly Pads throughout

Future Improvements



Highlights

- Building: 10,000 SF (Warehouse/ Maintenance Facility)
- Total site size inclusive of warehouse: 3.56 – 7.56 Acres.
- Signage opportunity along I-26 (Pylon/Road sign)

Interchange Access



Eastbound Access

- Nexton Parkway / Exit 197
- ±1.7 Miles from Site



Westbound Access

- Jedburg Road / Exit 194
- ±2.0 Miles from Site

Location

1430 Business Park Road



**Charleston
Int'l Airport**

18.9 miles

**Charleston
CBD**

25.9 miles

**Port of
Charleston**

26.5 miles

I-95

28.4 miles





Contact Us

Brendan Redeoff, SIOR
Senior Vice President
+1 843 577 1167
brendan.redeyoff@cbre.com

Robert Barrineau
Senior Vice President
+1 843 577 1157
robert.barrineau@cbre.com

© 2026 CBRE, Inc. All rights reserved. This information has been obtained from sources believed reliable, but has not been verified for accuracy or completeness. You should conduct a careful, independent investigation of the property and verify all information. Any reliance on this information is solely at your own risk. CBRE and the CBRE logo are service marks of CBRE, Inc. All other marks displayed on this document are the property of their respective owners, and the use of such logos does not imply any affiliation with or endorsement of CBRE. Photos herein are the property of their respective owners. Use of these images without the express written consent of the owner is prohibited.